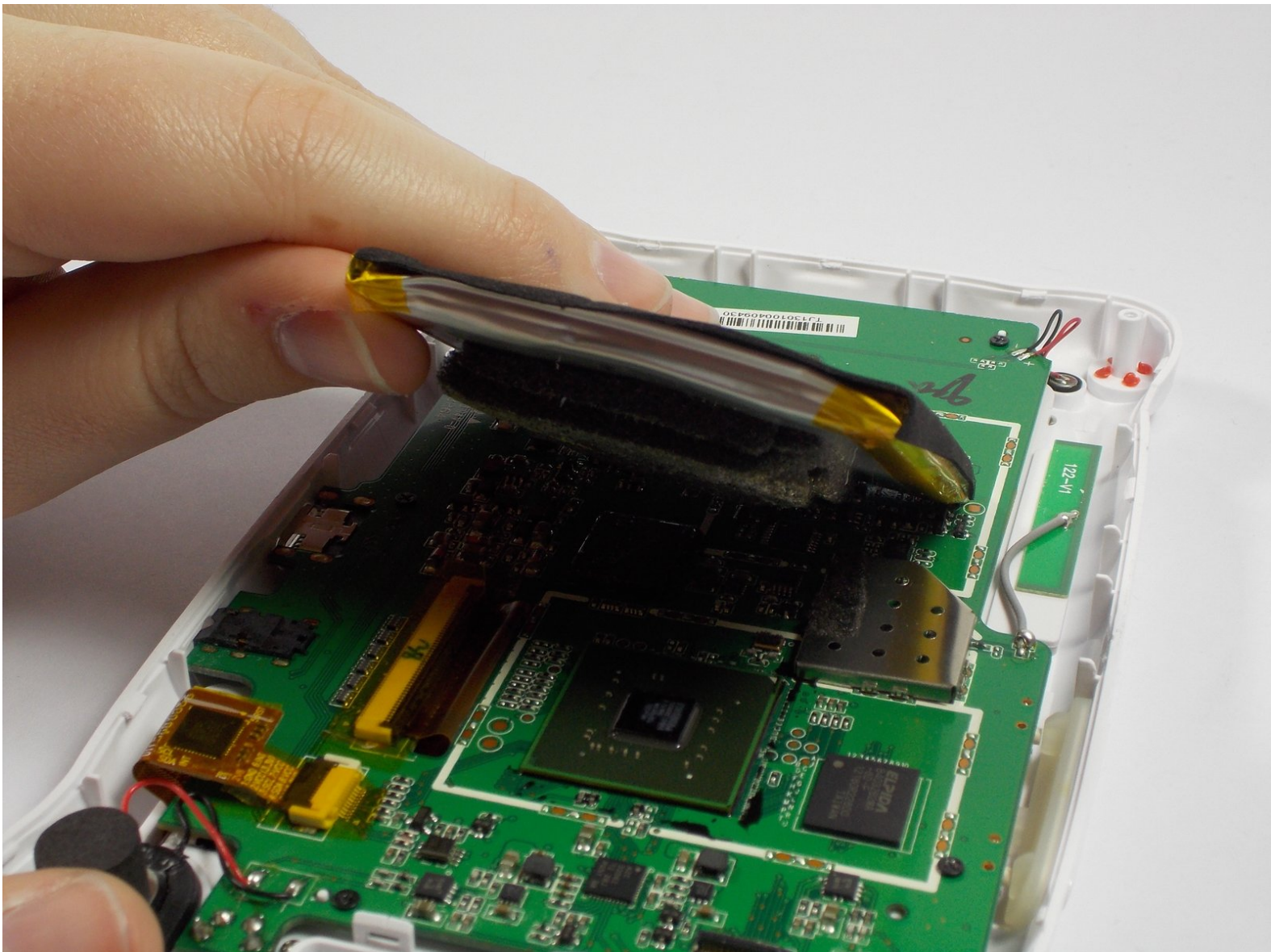




# Nabi Jr Battery Replacement

Use this guide to replace the battery for the Nabi Jr if the battery is broken

Written By: Jimmy Nguyen





## TOOLS:

- [Phillips #0 Screwdriver](#) (1)
  - [iFixit Opening Tools](#) (1)
  - [Soldering Iron](#) (1)
-

## Step 1 — Rear Case



- Remove the red rubber case from the device. This should come off with ease.

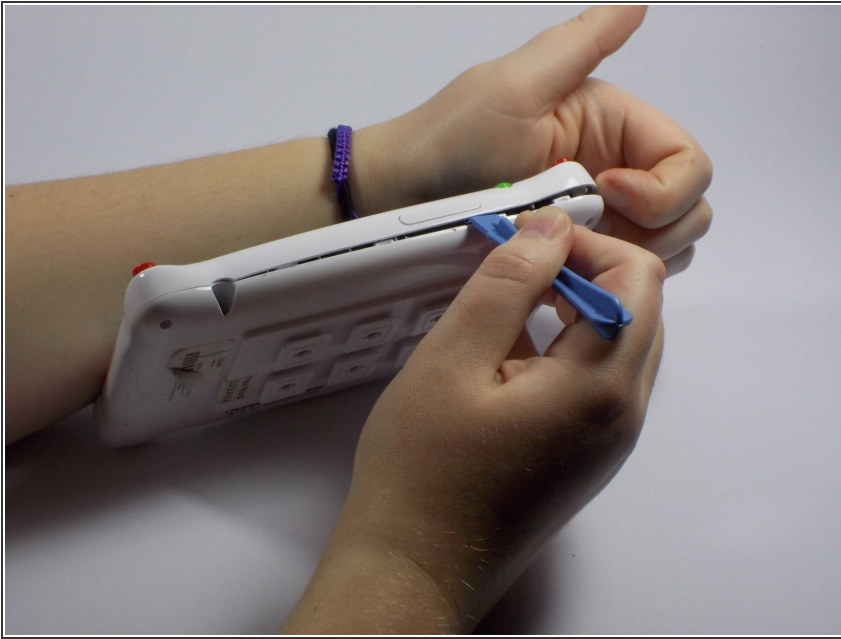
## Step 2



- Turn the device so the screen is facing away from you.
- Using a philips head, size #00, screwdriver, remove the screws in each corner of the plastic casing. (total of 4 screws)

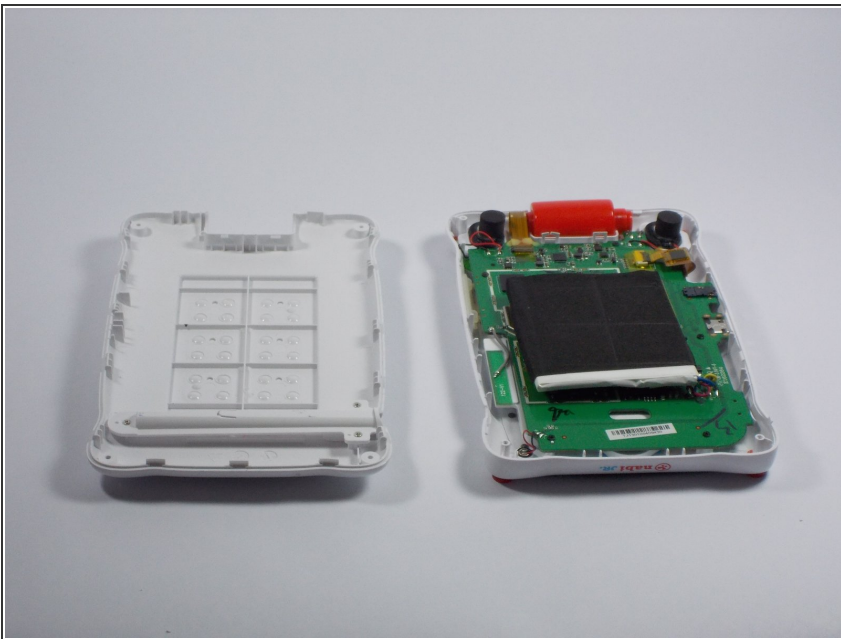


## Step 3



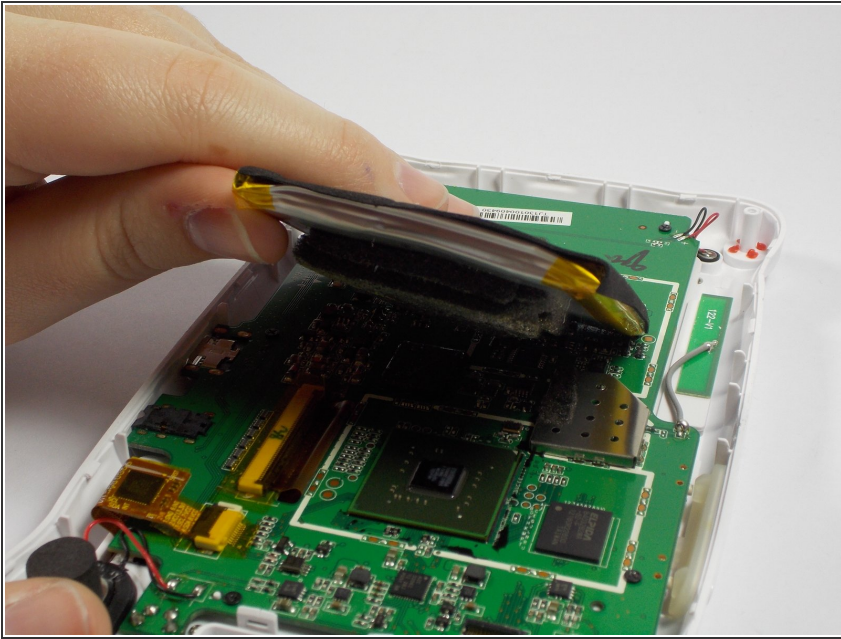
- Remove the device casing using a small plastic pry bar.
- ⓘ This might take a little bit of force to accomplish, don't be afraid to go at it with a little gusto.

## Step 4



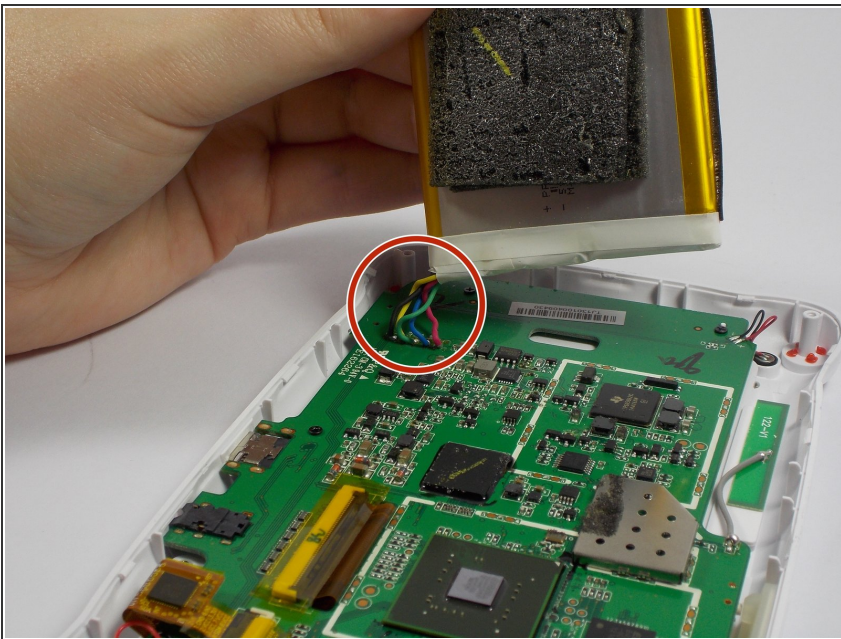
- After loosening the back cover, remove it from the device so you can get at the innards.

## Step 5 — Battery



- Lift the battery up from the motherboard.
- ⚠ Don't rip the soldered wires from the board.
- ⓘ The battery is stuck to the motherboard with adhesive, it may take a little pull to separate.

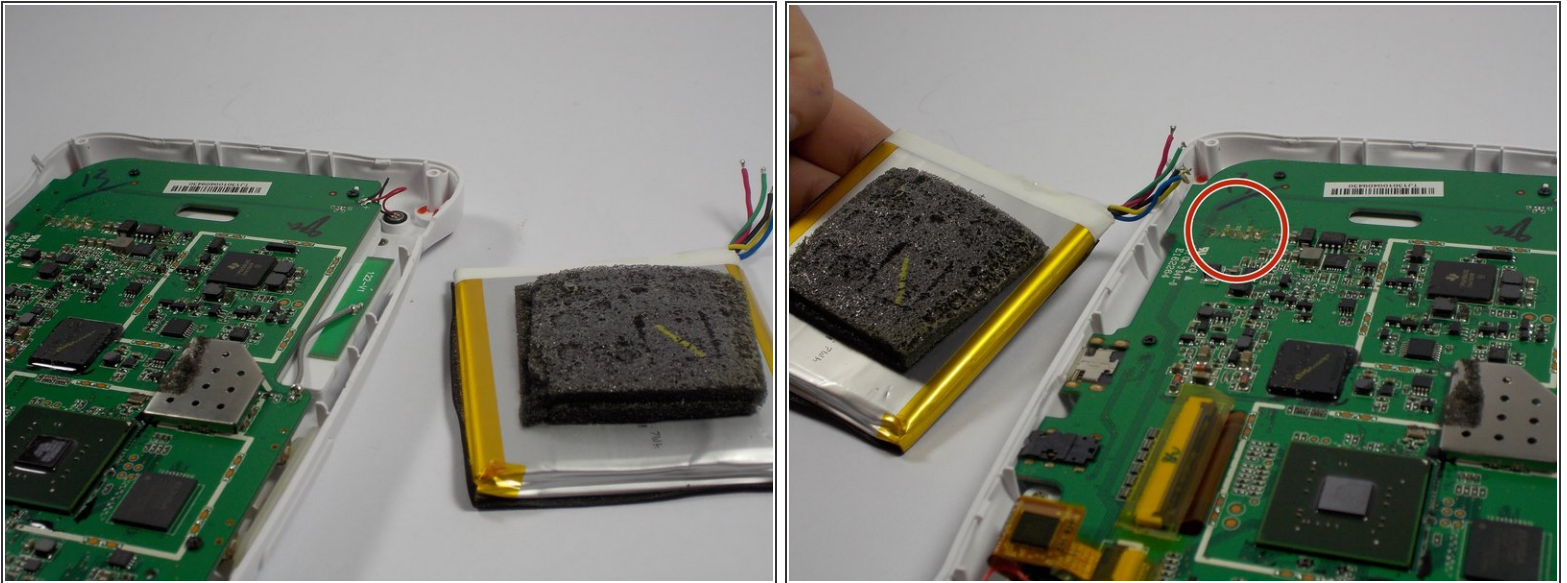
## Step 6



- Remove the battery from the motherboard
- De-solder the colored wires
  - ⓘ Be sure to note the order in which the wires are connected to the board before desoldering them.
- ⚠ Be careful while removing the solder off of the colored battery wires. The soldering iron will be extremely hot



## Step 7



- Replace the old battery with the new one
- Solder the wires of the new battery into the pads on the motherboard
- ⚠ Be careful when soldering the wires in. Soldering iron will be extremely hot

## Step 8



- Once the wires are fully soldered, put the new battery back to the initial position
- Close the case by putting the back cover back on the device
- ⚠ Will take some force
- ⓘ Make sure the battery is not in the way of the back cover

## Step 9



- Once the back cover is on, screw in the four screws that you had taken off in the beginning
- Put the red rubber casing back on.

If all the steps were followed correctly, the device should be fully closed and ready to go