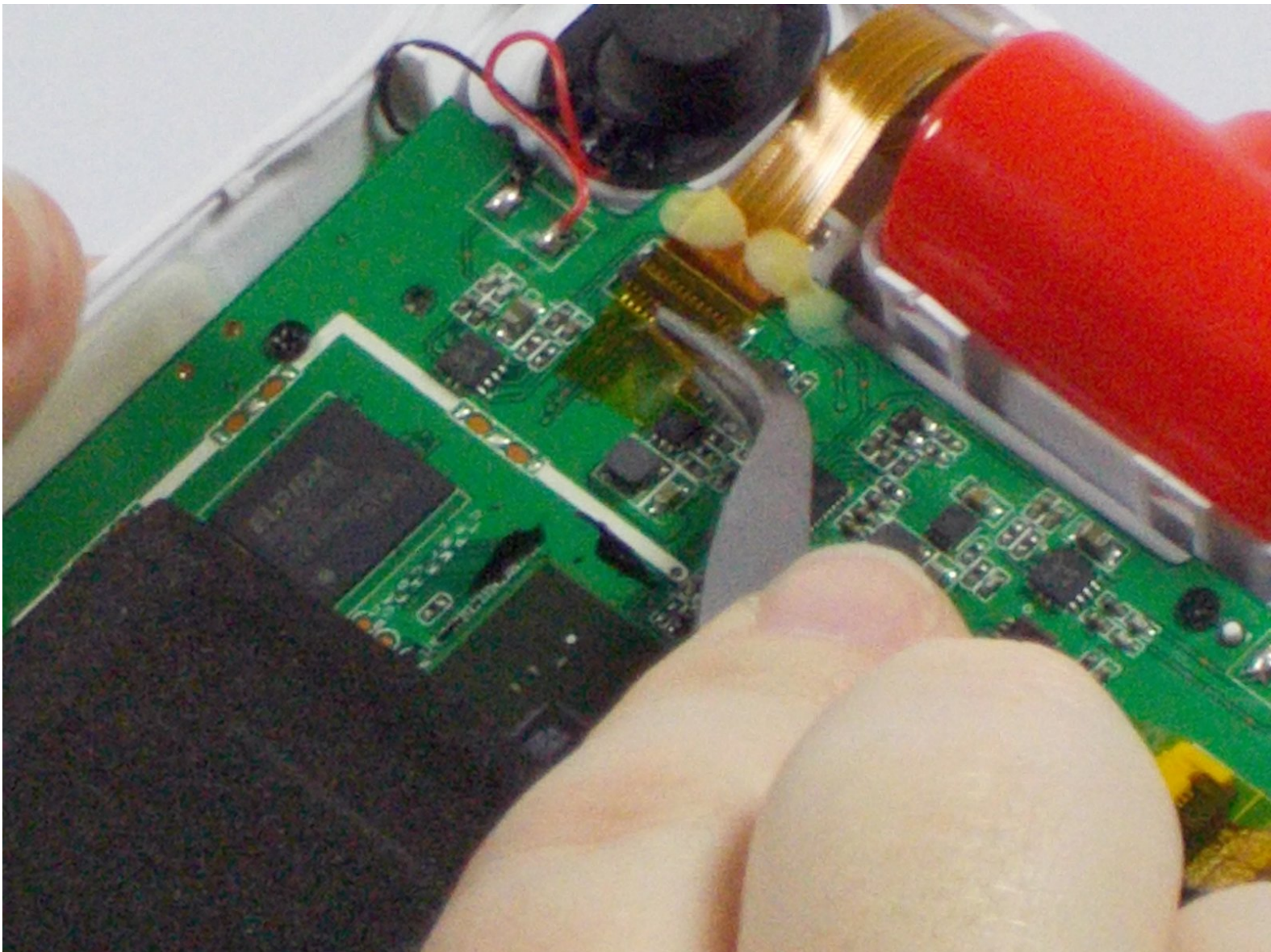




# Nabi Jr Camera Replacement

Use this guide to replace a broken camera on your Nabi Jr.

Written By: Kaila Joy





## TOOLS:

- [Phillips #00 Screwdriver](#) (1)
- [iFixit Opening Tools](#) (1)
- [Tweezers](#) (1)

## Step 1 — Rear Case



- Remove the red rubber case from the device. This should come off with ease.

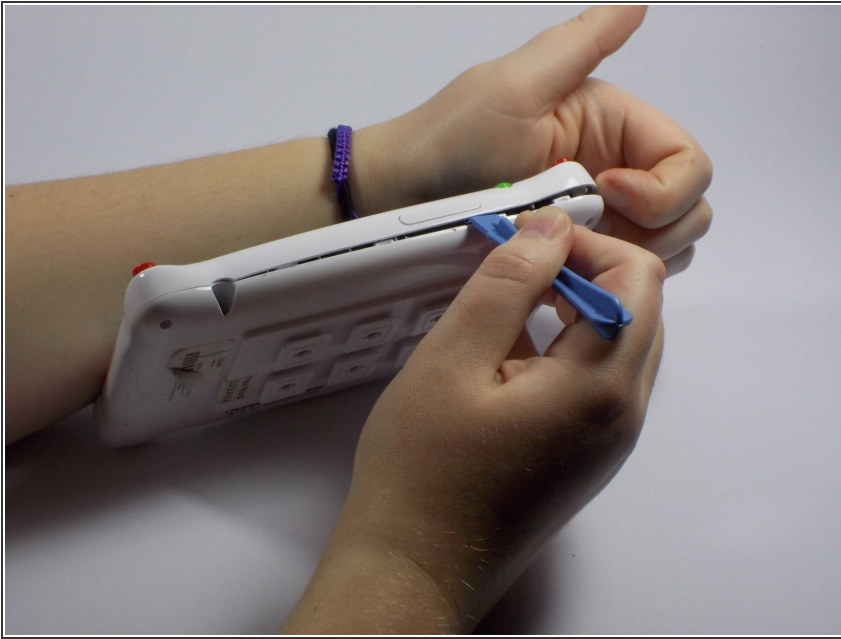
## Step 2



- Turn the device so the screen is facing away from you.
- Using a philips head, size #00, screwdriver, remove the screws in each corner of the plastic casing. (total of 4 screws)

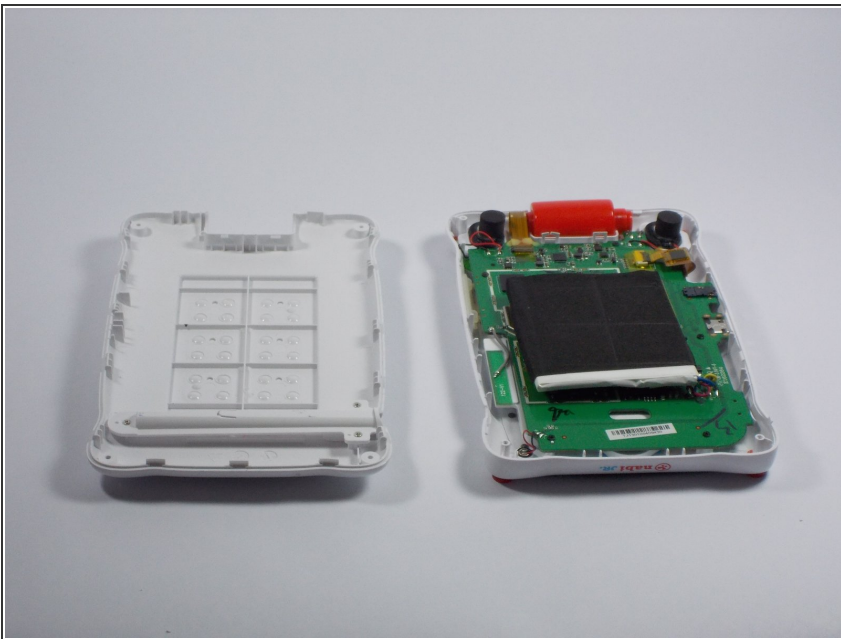


## Step 3



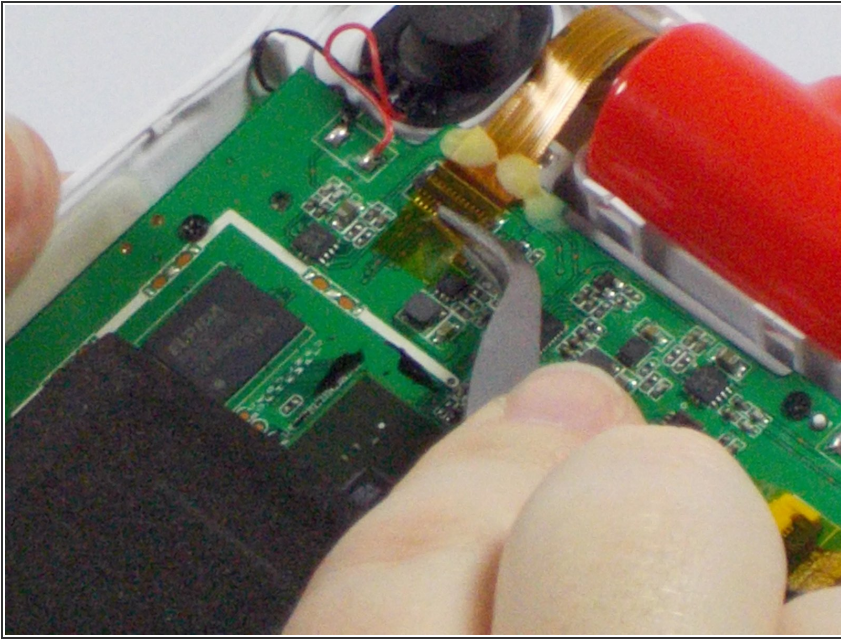
- Remove the device casing using a small plastic pry bar.
- ⓘ This might take a little bit of force to accomplish, don't be afraid to go at it with a little gusto.

## Step 4



- After loosening the back cover, remove it from the device so you can get at the innards.

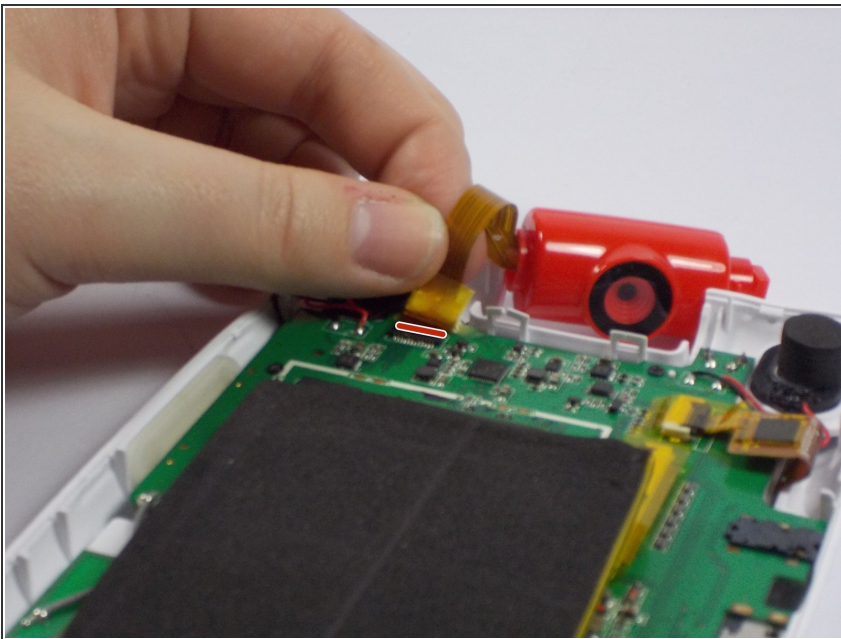
## Step 5 — Camera



- Using tweezers remove tape that connects the board to the camera's ribbon cable.
- ⓘ The ribbon cable is inserted into a slot on the board.
- Lift the slot's locking tab up to easily remove the ribbon cable from the board.

⚠ May require force

## Step 6



- Place the new camera piece in place of the old and plug its ribbon cable back into the respective slot on the board.
- Make sure the locking tab on the slot is in its up position before inserting tape.
- Once the tape is inserted press the locking tab back to its down position to securely fasten the ribbon cable.

To reassemble your device, follow these instructions in reverse order.