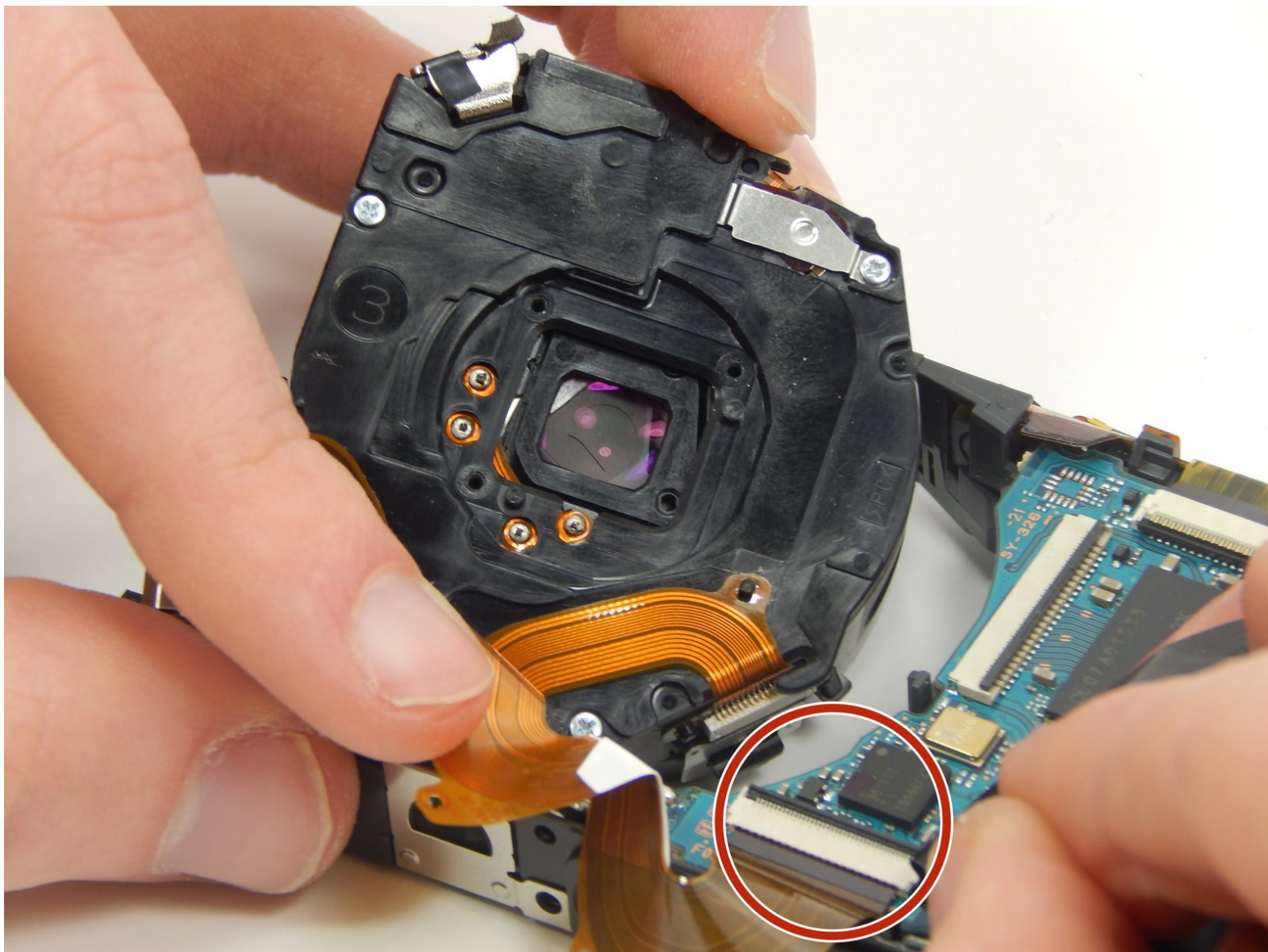




Sony Cyber-shot DSC-WX100 Lens Assembly Replacement

Removing the lens from the DSC-WX100.

Written By: Matthew



INTRODUCTION

This guide allows one to remove the lens unit from the camera. Thus is can then be replaced by a new one.



TOOLS:

- [iFixit Opening Tools](#) (1)
 - [Phillips #000 Screwdriver](#) (1)
-

Step 1 — Battery



- Open the flap indicated to allow access to the battery slot.
- ⓘ The gray switch indicated has to be moved to the right in order to release the flap.

Step 2



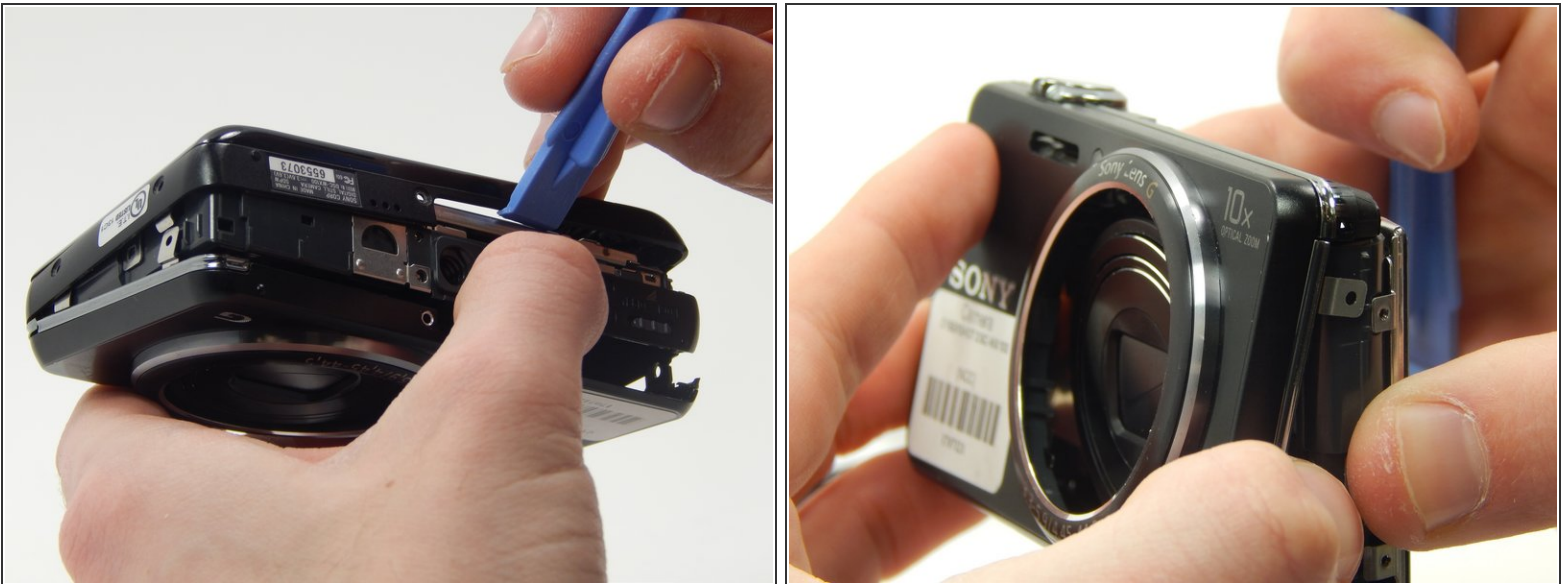
- ⓘ If the old battery is still in the slot, then make sure the camera is turned off prior to removal.
- If there is a battery currently in the slot, remove by first pulling downwards on the blue component. This will allow you to remove the battery from the slot.

Step 3 — Outer Casing



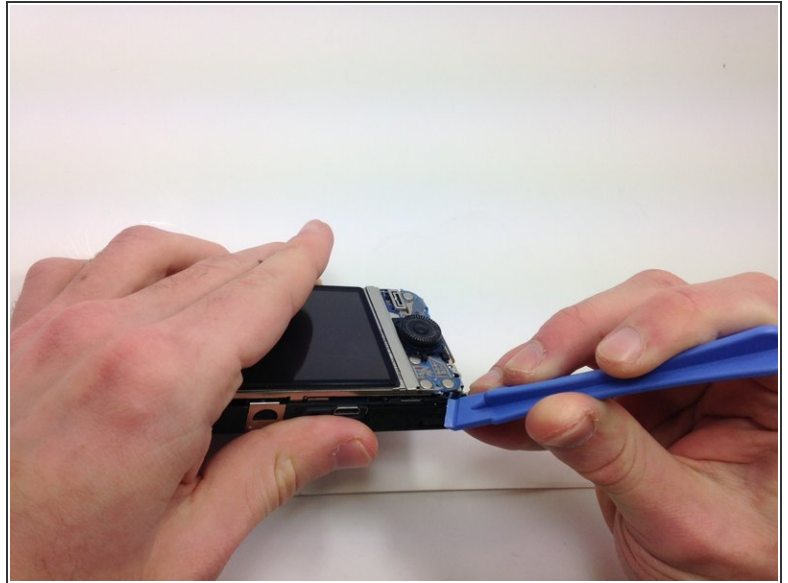
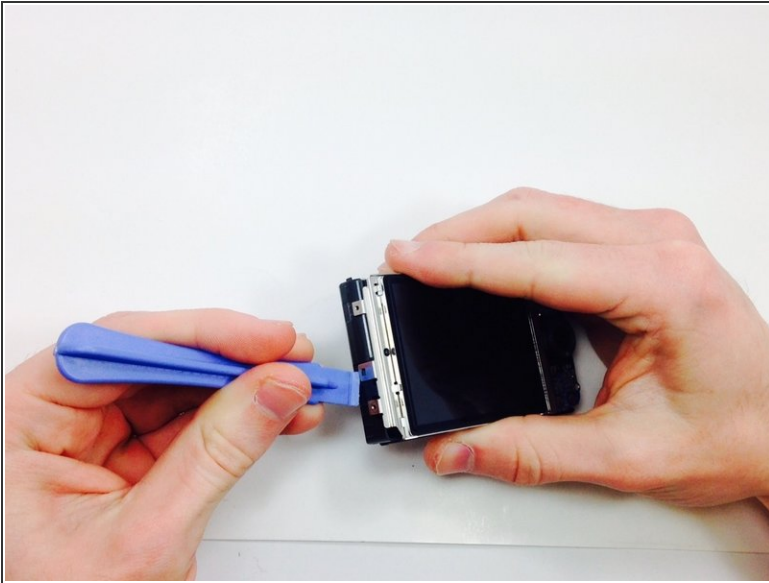
- Remove all of the 1mm screws using a Philips #000 Screwdriver.
- Remove the rest of the screws (2mm) from the camera covers using a Phillips #000 Screwdriver.

Step 4



- Use the plastic opening tool to gently remove the front and back plates of the camera.

Step 5



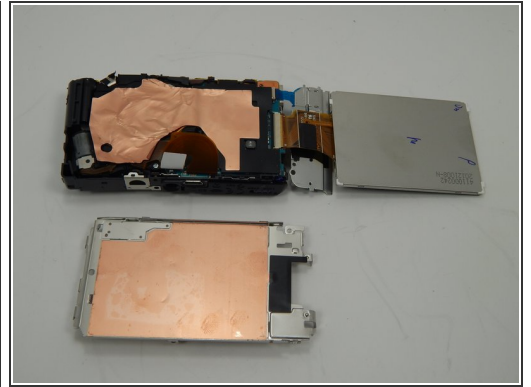
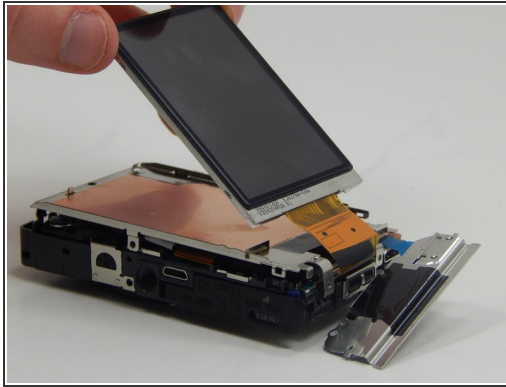
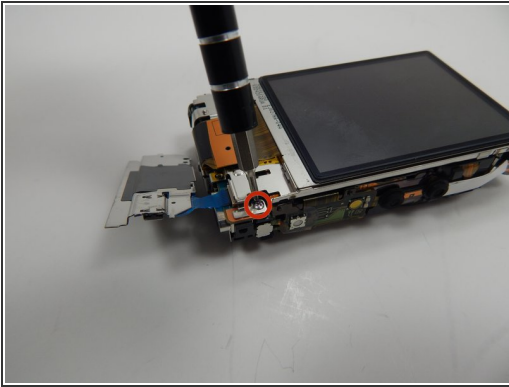
- Use a plastic opening tool to gently release the two indicated tabs.

Step 6 — Image Sensor



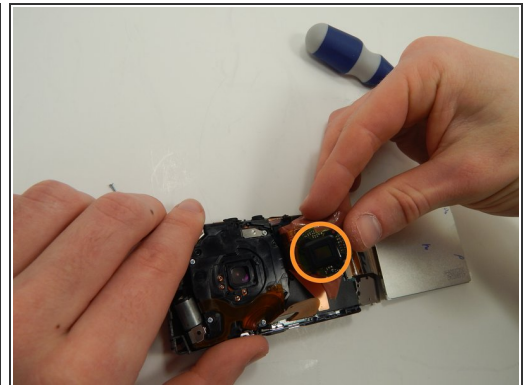
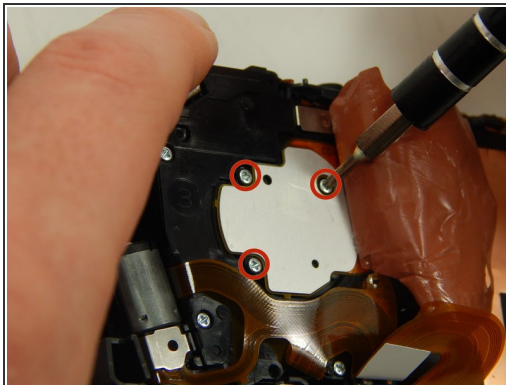
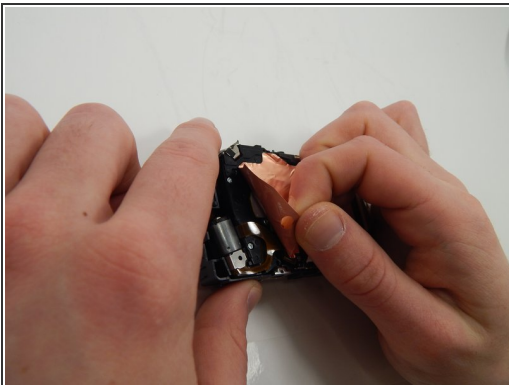
- Pull up on the lower end of the plate. Lift it so that the plate is uninhibited by the indicated bump.
 - Pull away from the camera at the end of the metal plate with the blue circuits to then remove the plate from the rest of the camera.
- ⓘ For help with this step, refer to the video.

Step 7



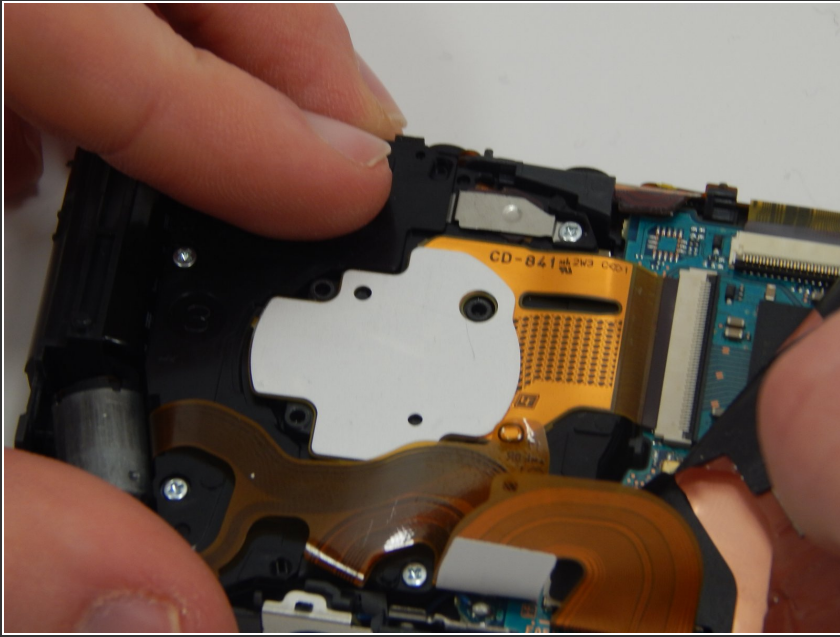
- Remove this screw (1mm) with the Phillips #000 Screwdriver.
- Gently lift the LCD screen component from the metal plate.
- Remove the metal plate that was underneath the LCD screen from the camera.

Step 8



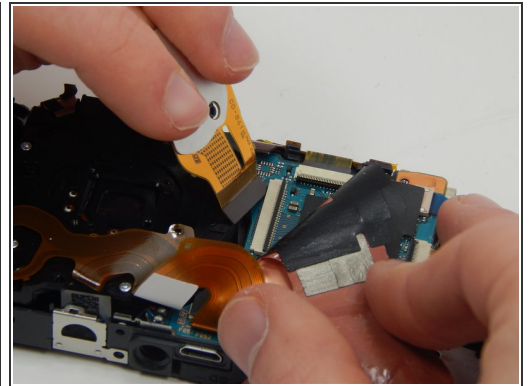
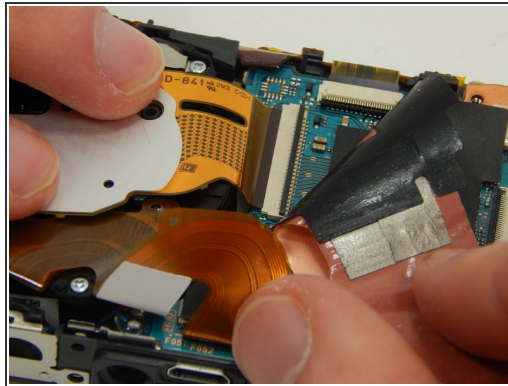
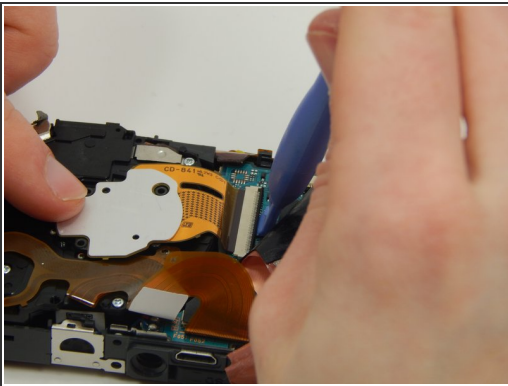
- Peel back the copper sheet.
- Unscrew the three marked screws (2mm) using a Phillips #000 Screwdriver.
- Remove the panel attached by said screws.

Step 9



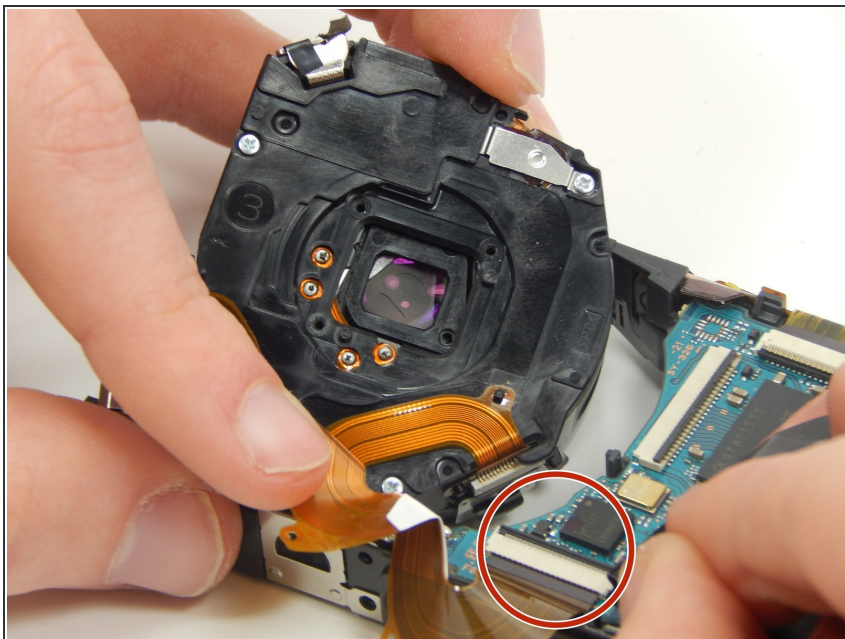
- Peel back both the copper sheet and the black tape underneath the panel to expose the connection port.

Step 10



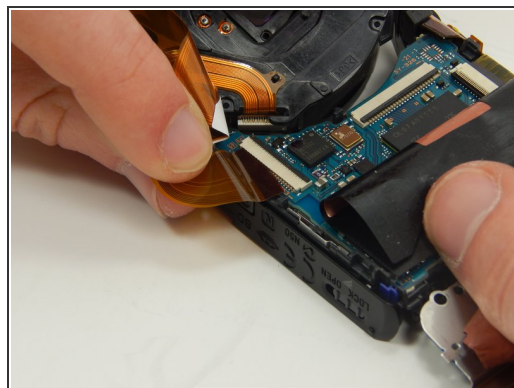
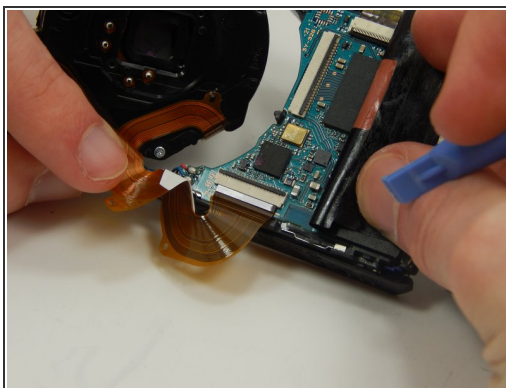
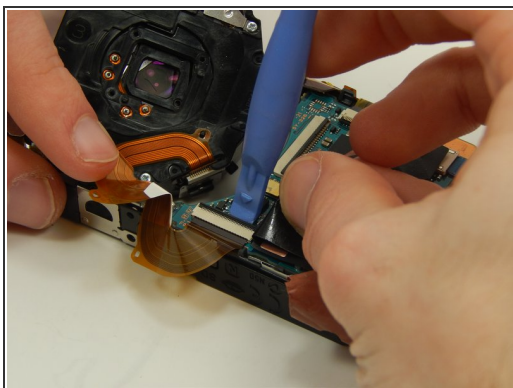
- Use a plastic opening tool to pry the black bar upwards.
- Pull the image sensor out after the black tab is released.

Step 11 — Lens Assembly



- Peel back the black tape to reveal the connection port shown below.

Step 12



- Pry the black bar upwards with a plastic opening tool.
- Remove the wire sheet from the connection port.

To reassemble your device, follow these instructions in reverse order.