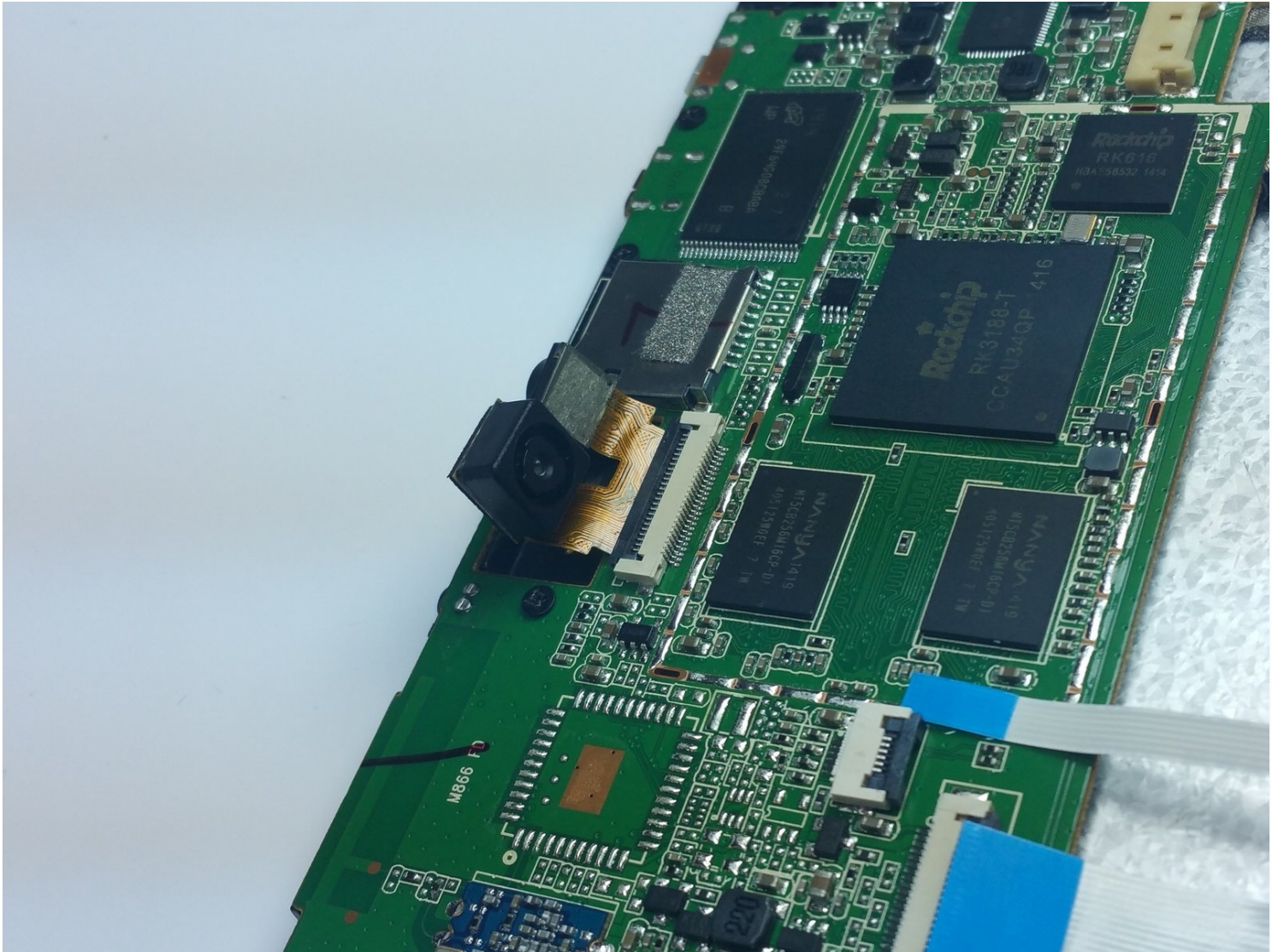




Nextbook 8 Camera Replacement

Written By: Dylan Wiese



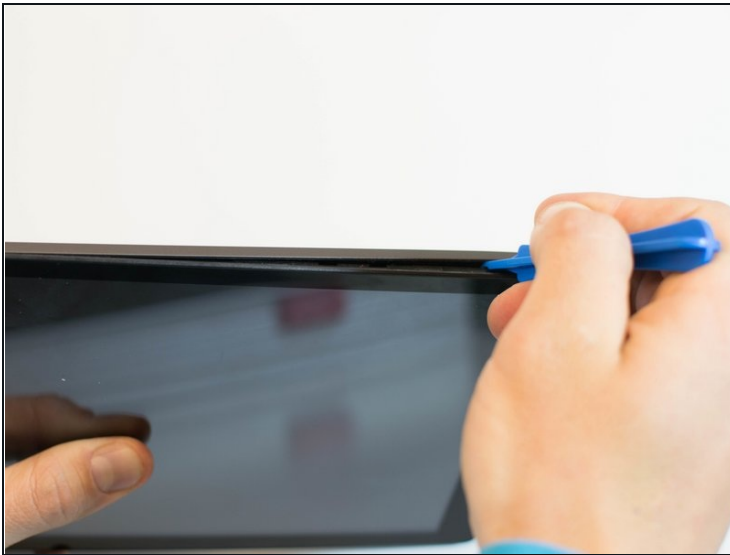
TOOLS:

[iFixit Opening Picks set of 6](#) (1)

[iFixit Opening Tool](#) (1)

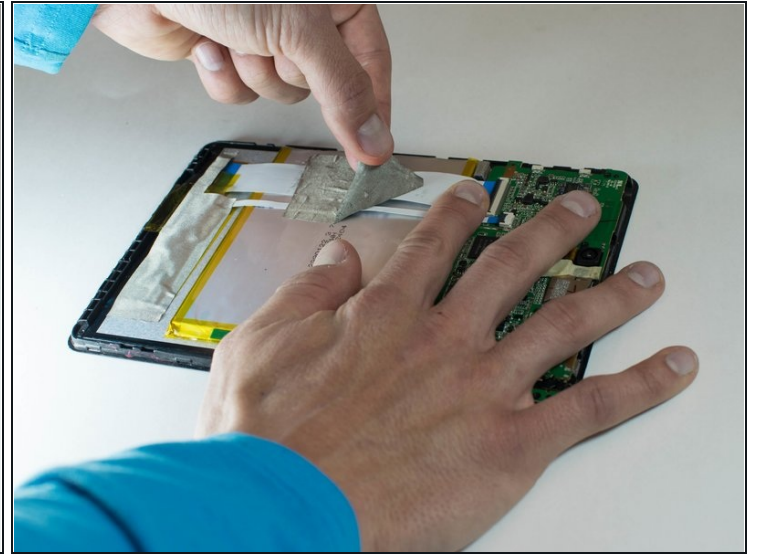
[Spudger](#) (1)

Step 1 — Battery



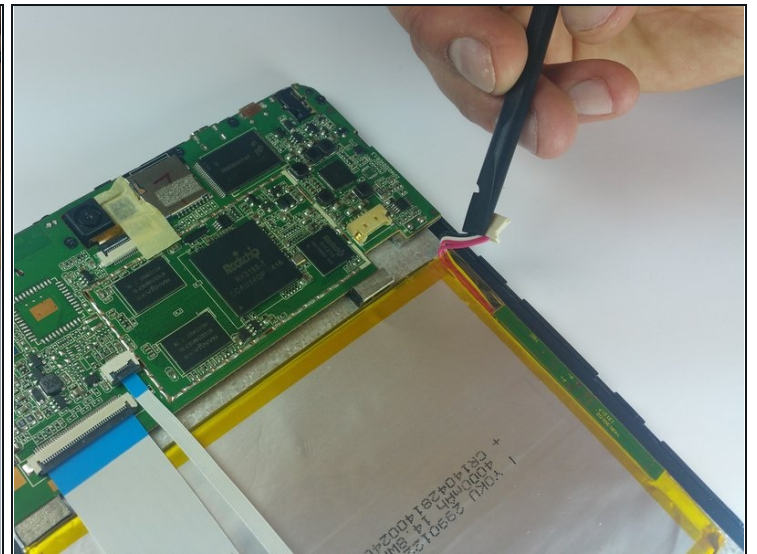
- Use the plastic opening tool to remove the back cover. Carefully slide the tool between the front glass and back cover.
 - Slide the tool along the edge to work the back cover off.
- ⓘ It helps to have an extra tool to stick in the gap and keep the back cover separated from the glass as you slide the other tool.

Step 2



- Remove the tape covering the motherboard.
- Remove the silver tape holding the white ribbon cables to the battery.

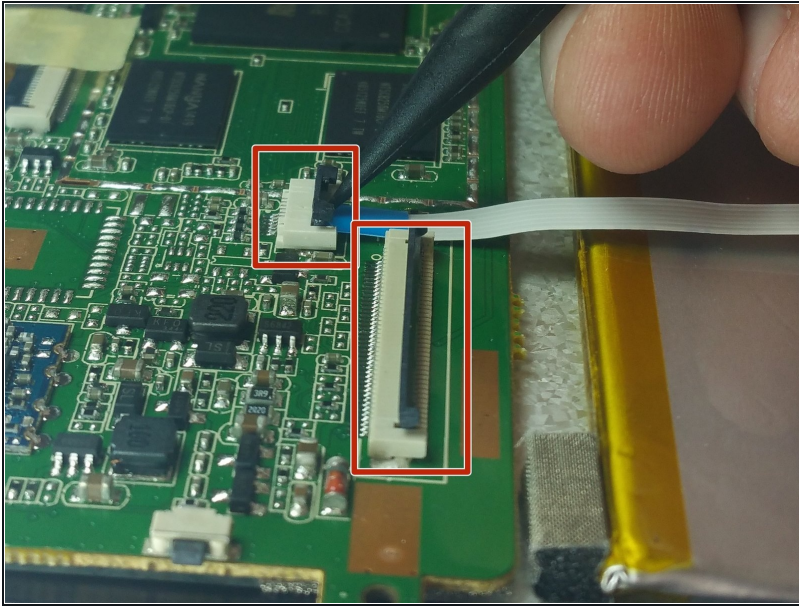
Step 3



- Use a spudger to carefully disconnect the battery connector from the motherboard.

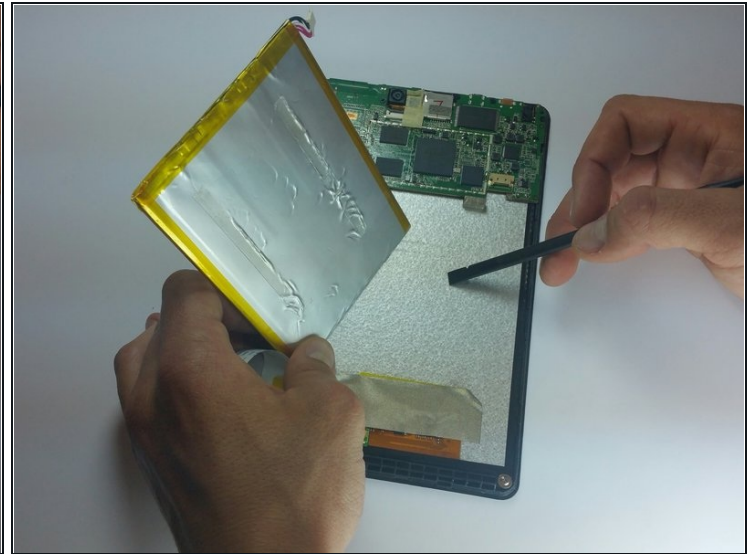
⚠ When working with electronics, it's important to choose a tool that's ESD-safe to avoid accidental damage to the device. The regular black nylon spudger or a plastic opening tool should be used whenever possible.

Step 4



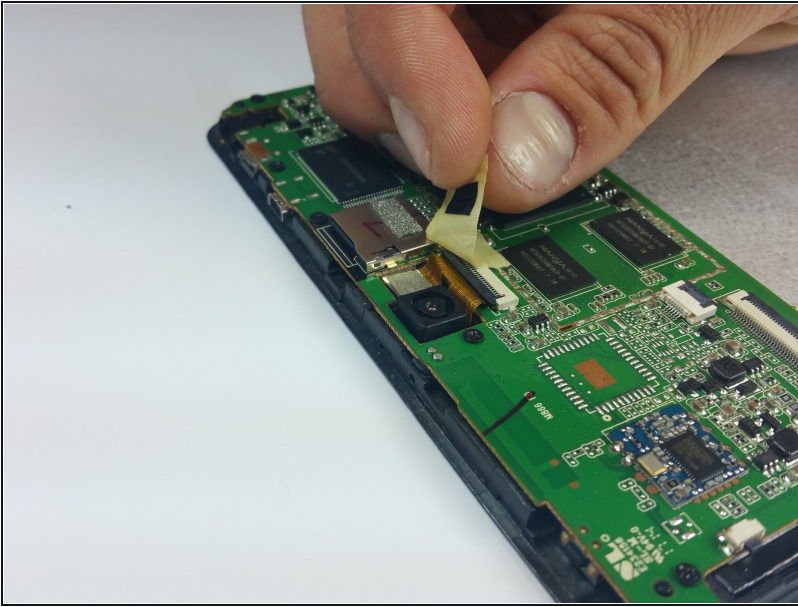
- Use a spudger to lift up the black bar on the two ZIF connectors located above the battery.
- Pull the ribbon cables out of the connectors with [tweezers](#) or two fingers.

Step 5



- Using the flat end of a spudger, carefully work the spudger under the battery, lifting it off of the device.
- ⓘ The battery is very malleable, so do not try to pull it off all at once.

Step 6 — Camera



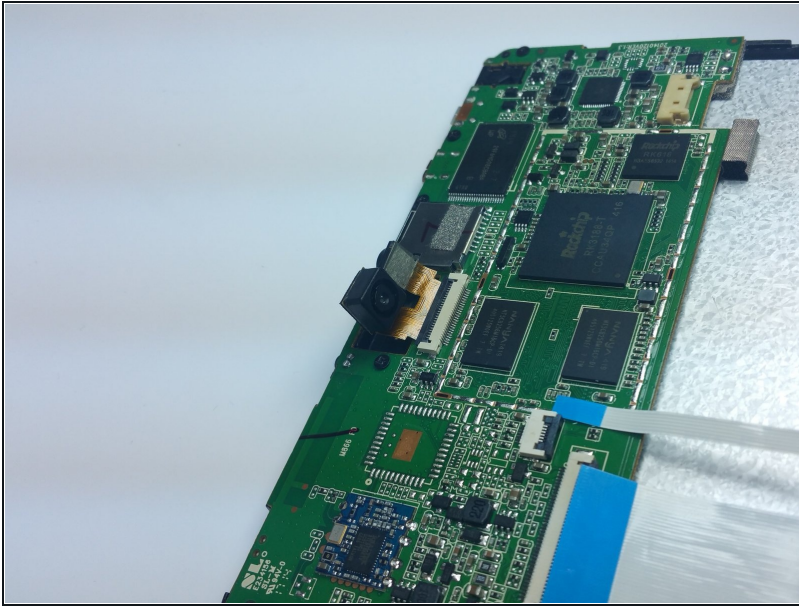
- Slowly pull up masking tape by pulling down from the top.
- ⓘ Be careful because both the front and rear cameras are attached to each other.

Step 7



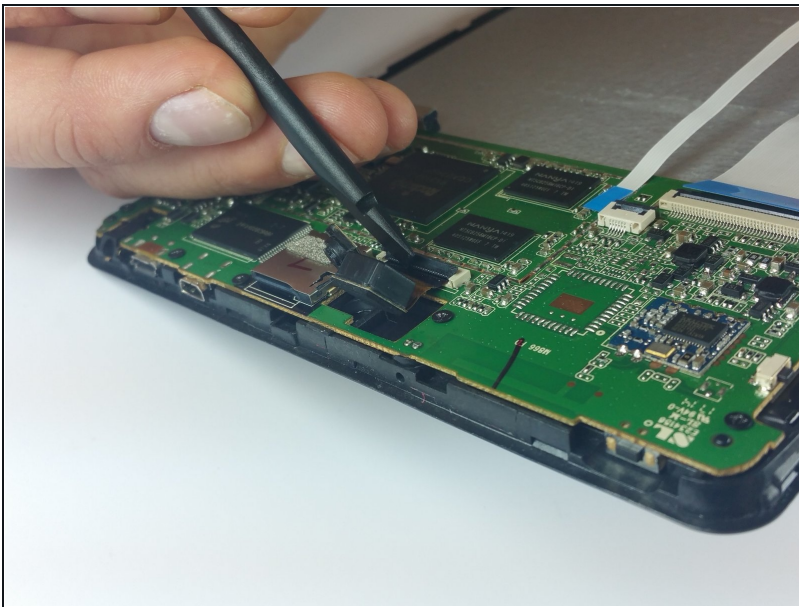
- Peel the bottom part of the masking tape off to reveal the ribbon connector.

Step 8



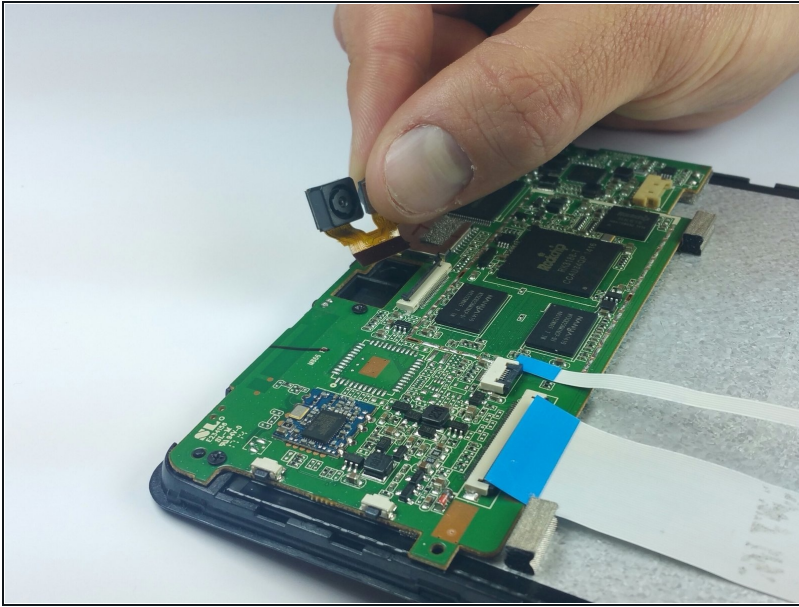
- Pull both camera lenses out of the holes.

Step 9



- Use a spudger to disconnect the two camera lenses from the device.
- Carefully lift the black connector to release the cameras.

Step 10



- Pull both camera lenses out of the ribbon connector.

To reassemble your device, follow these instructions in reverse order.