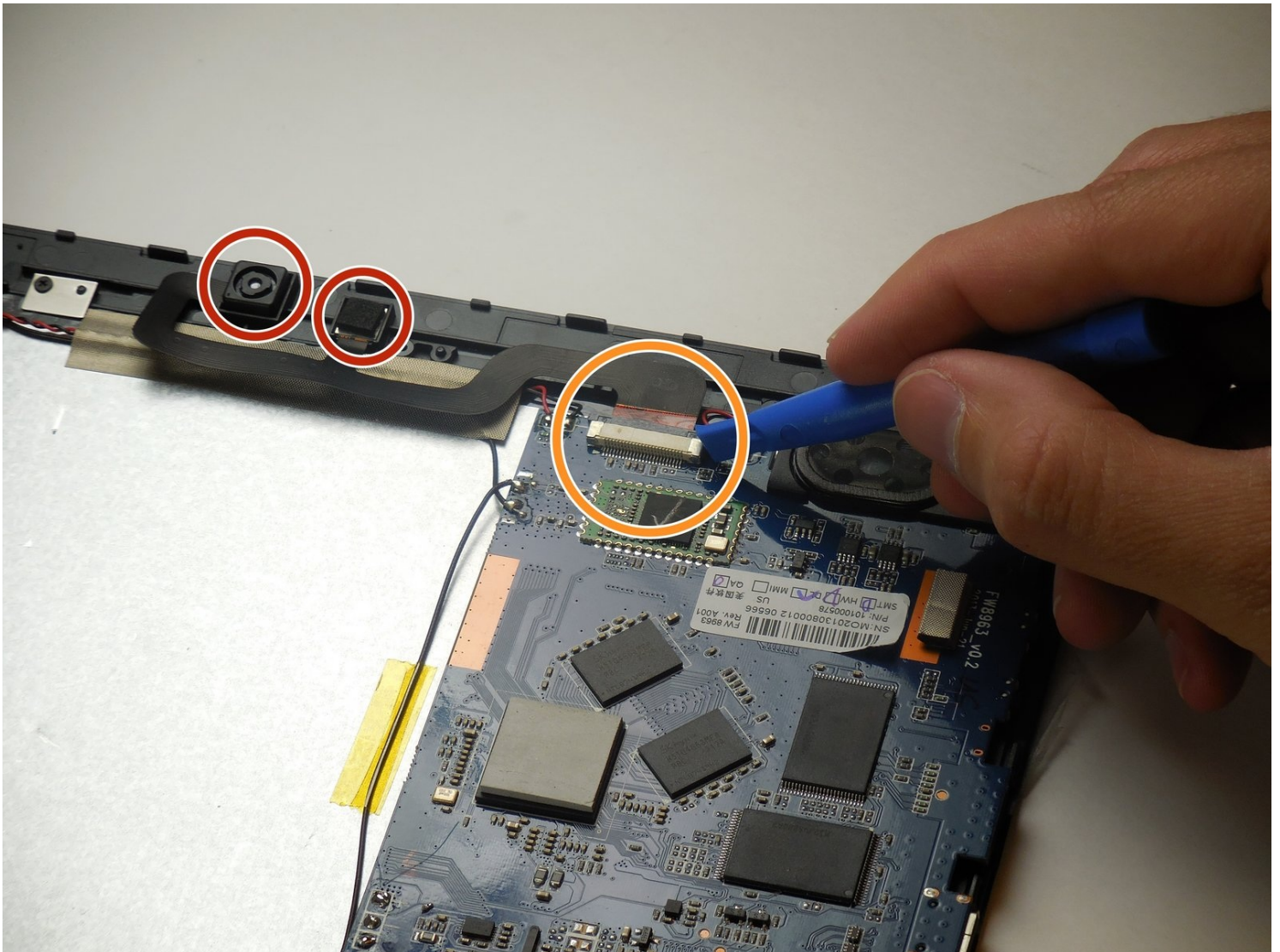




Hannspree Hannspad SN1AT71 Front and Rear Camera Replacement

After getting into the Hannspree Hannspad...

Written By: matthew vandeventer



INTRODUCTION

After getting into the Hannspree Hannspad SN1AT71, the Camera is fairly easy to replace.

TOOLS:

[Metal Spudger](#) (1)

[iFixit Opening Tool](#) (1)

[Tweezers](#) (1)

[Soldering Workstation](#) (1)

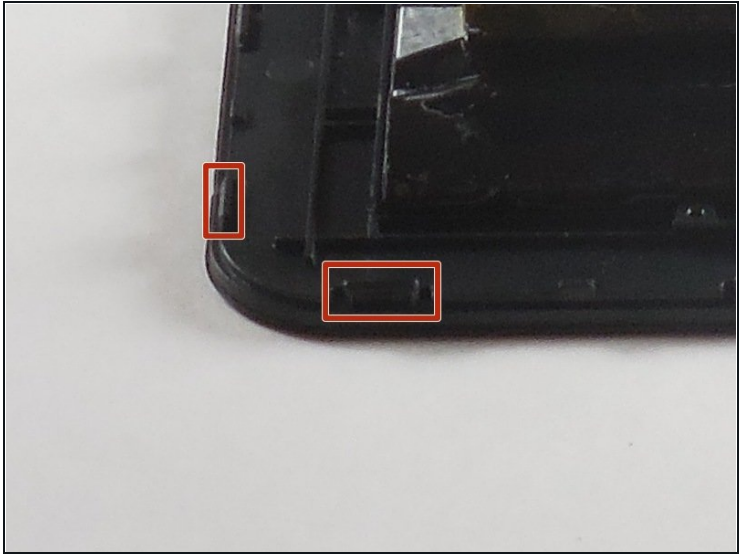
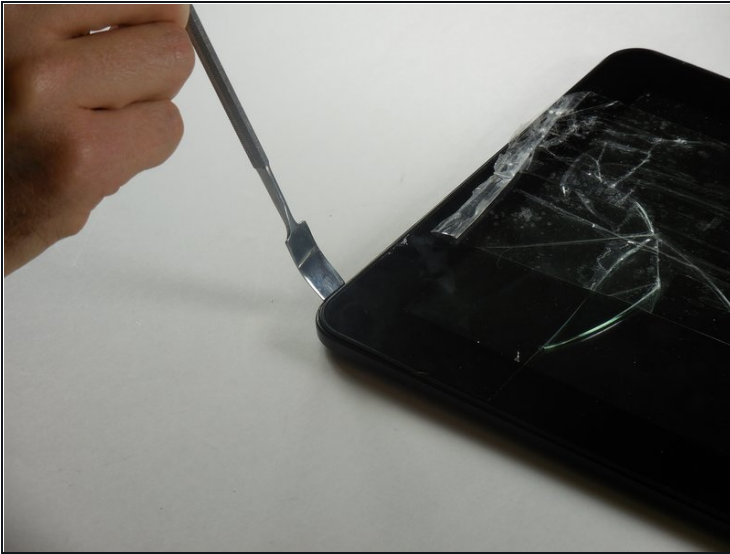
Step 1 — Back Panel



- Place the tablet screen side up.

 Make sure the device is turned off to avoid damage.

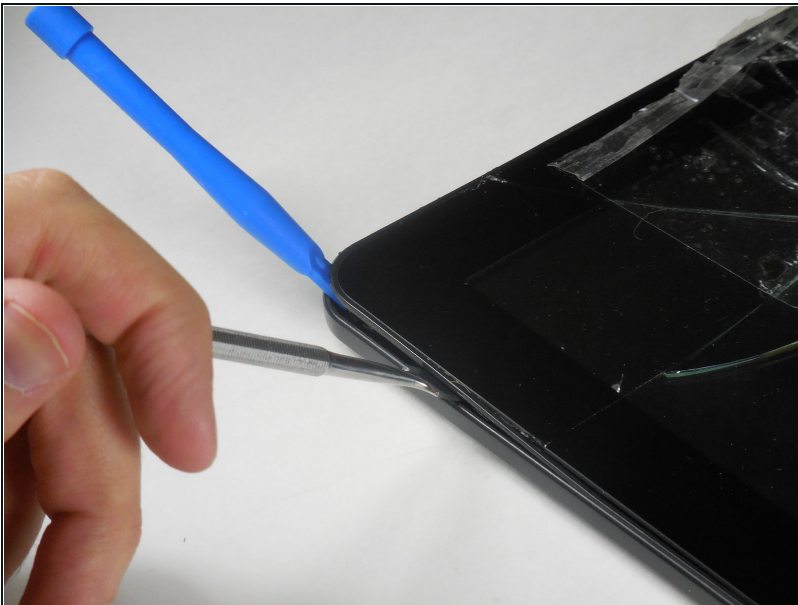
Step 2



- Use the metal spudger to press an opening between the screen and back cover.
- *The plastic tabs are located on each corner of the back cover.*

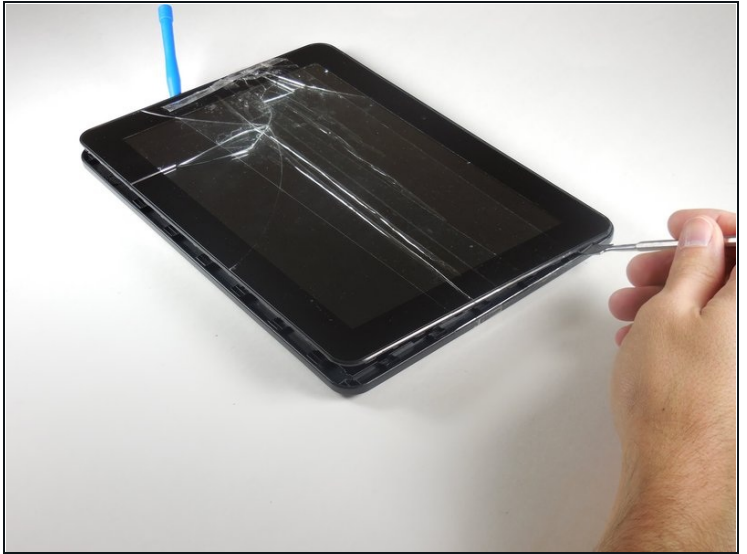
⚠ Be careful, as the plastic tabs are delicate.

Step 3



- Wedge the plastic opening tool between the screen and the back panel to prevent re-engagement

Step 4



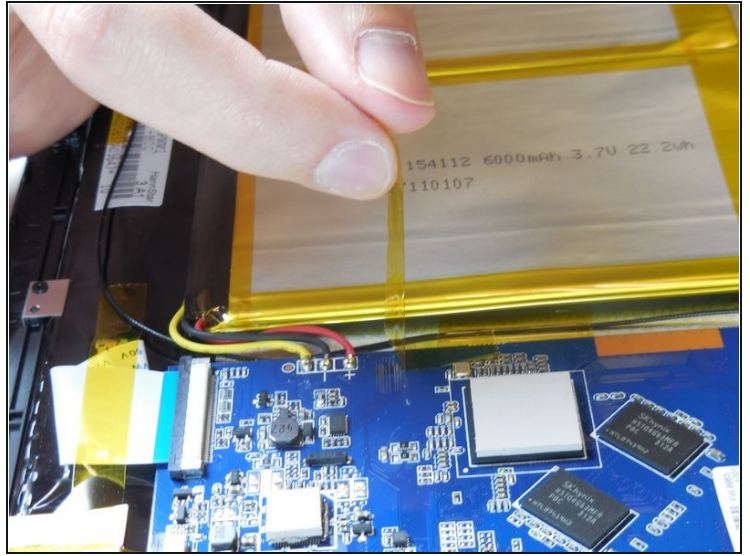
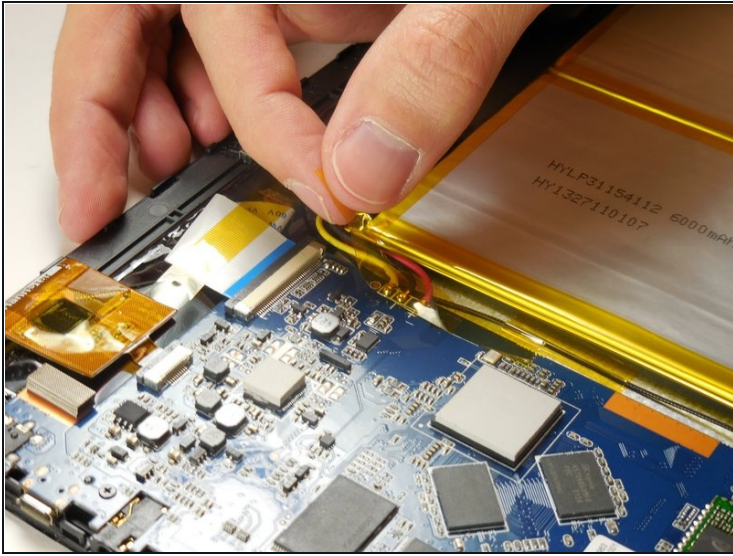
- Slide the metal spudger around the casing to separate it from the inside of the tablet.

Step 5



- Flip the tablet over so the screen side is down after all the tabs are separated.
- Remove the back panel by delicately lifting it straight up.

Step 6 — Battery



- Remove the adhesive tape from the power connection cables.

Step 7



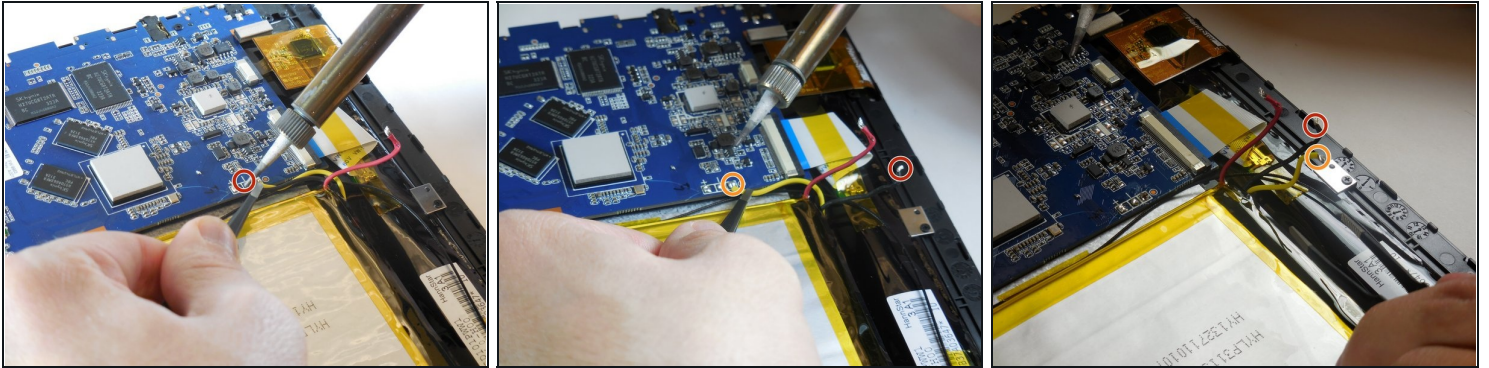
ⓘ Instructions for desoldering can be found on the [iFixit website](https://www.ifixit.com/Manual/Disassembly/Desoldering).

⚠ The soldering iron is hot. It can burn you and it can cause damage to the wires and motherboard.

- Grab hold of the red wire using the [tweezers](#).
- Desolder the red wire connection from the motherboard using the tip of the soldering iron.
- Move the wire connection away from the motherboard.

⚠ Do not let the red wire connection touch other wires or the motherboard.

Step 8



- Desolder the black and yellow wire connection from the motherboard by following the previous step.

⚠ When moving the wire connections, do not let the red wire connection touch other wires or the motherboard.

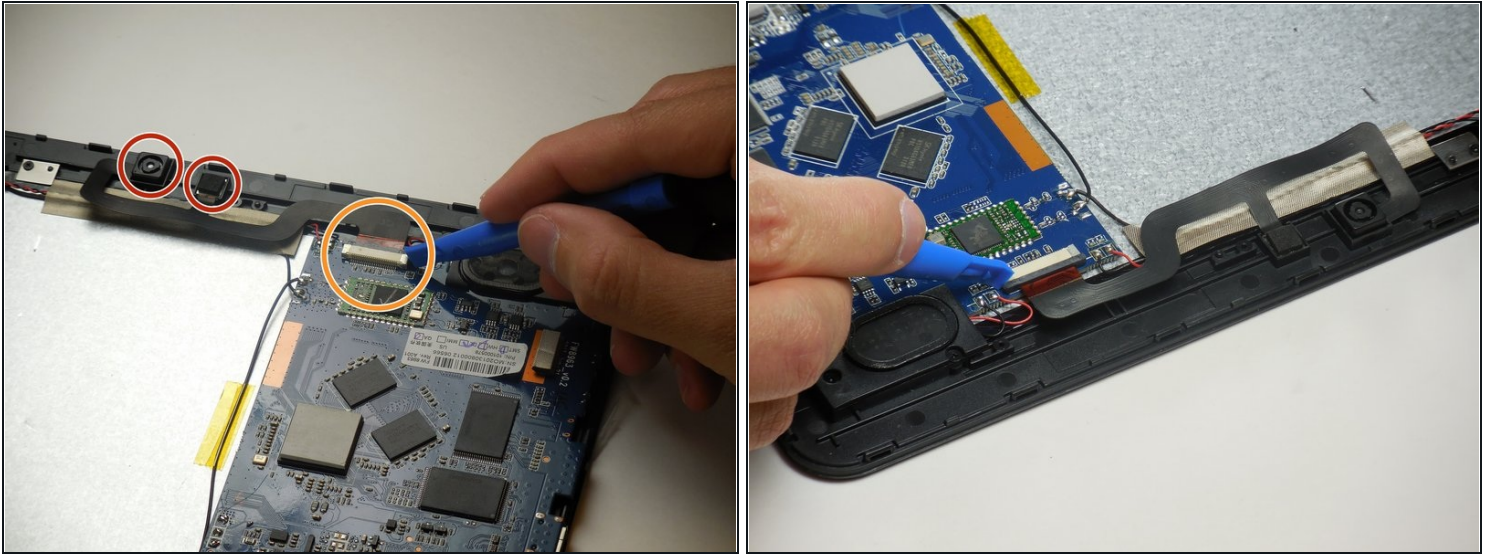
Step 9



- Insert the flat end of the nylon spudger between the battery and the case.
- The battery is connected to the tablet with an adhesive tape and will come free slowly.

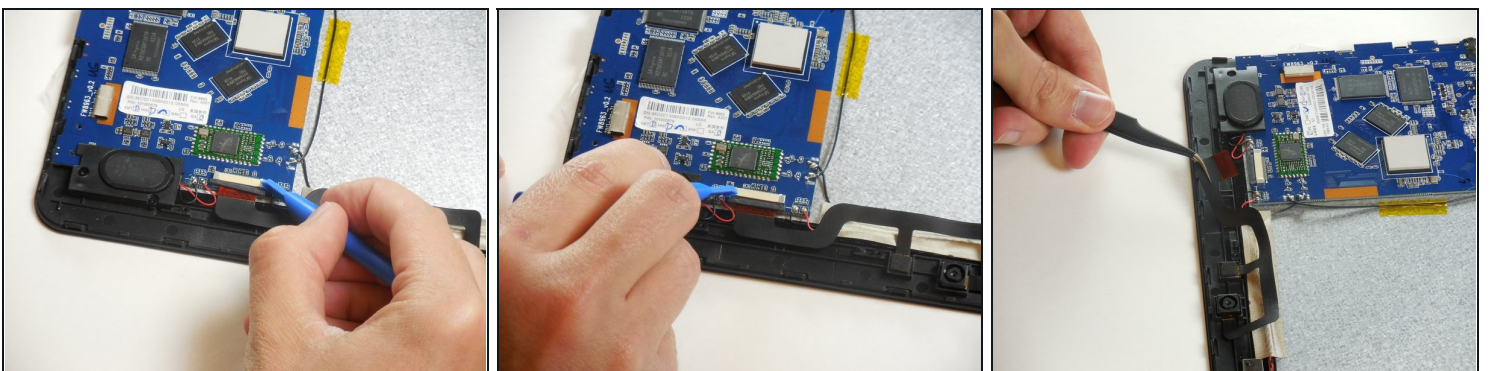
⚠ Do not puncture or bend the battery while removing. If your battery is swollen, [take appropriate precautions](#).

Step 10 — Front and Rear Camera Replacement



- Identify the ribbon connector attached to the camera and where it connects to the circuit board.
- The two cameras are connected with one ribbon cable.
- Zero insertion force connector.

Step 11



- Disconnect the sliding zero insertion force (ZIF). Use the plastic opening tool or a fingernail to slide the tab out, then pull the cable out.

Step 12



- Pull the cameras out of their resting places in a straight upward motion.

To reassemble your device, follow these instructions in reverse order.