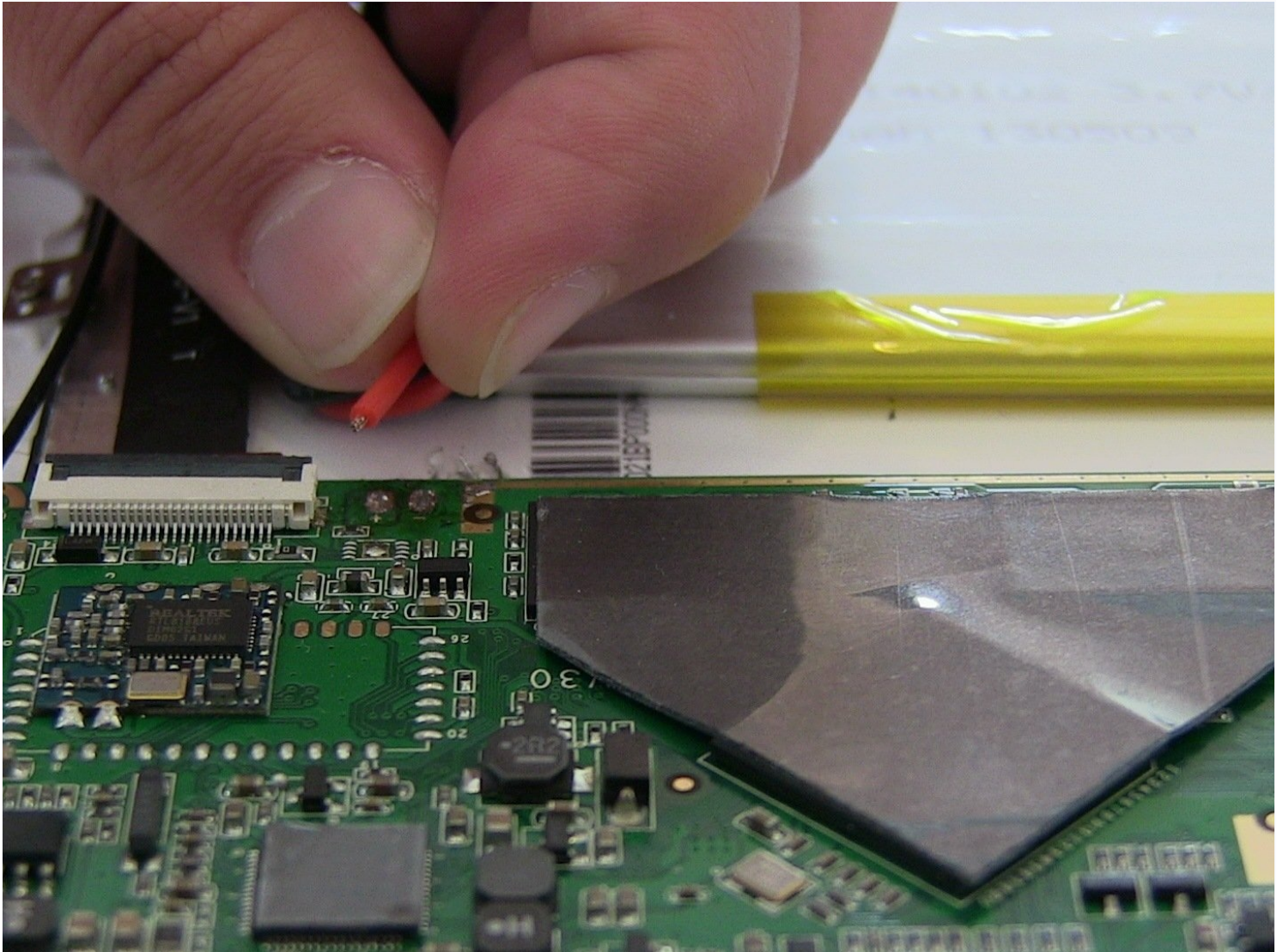




# Tivax MiTraveler 10Q-8 Battery Replacement

First, you will have to refer to the back plate...

Written By: Maria



## INTRODUCTION

First, you will have to refer to the back plate replacement guide. To replace the battery, be prepared to desolder two wires.

---

### TOOLS:

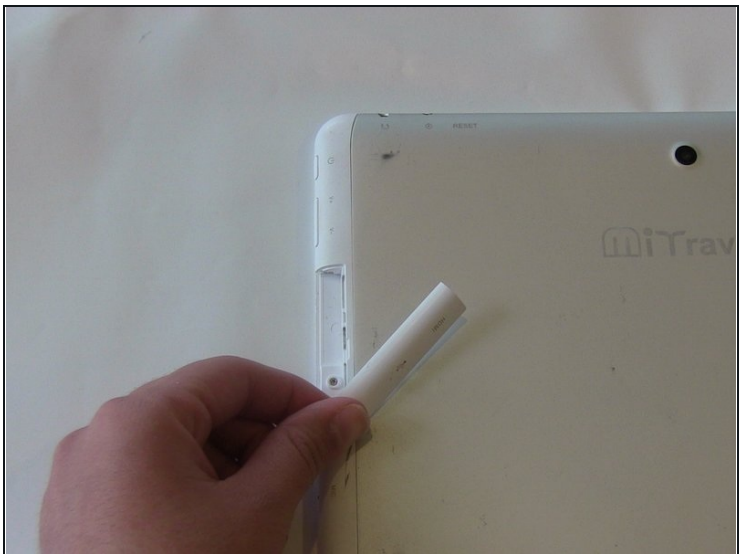
[iFixit Opening Tool](#) (1)

[Phillips #00 Screwdriver](#) (1)

[Soldering Iron 60w Hakko 503F](#) (1)

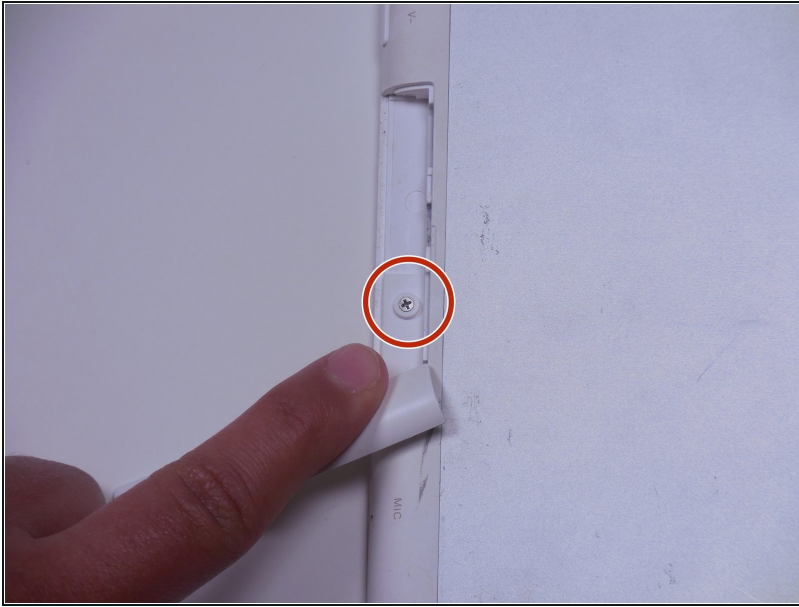
---

### Step 1 — Rear Case



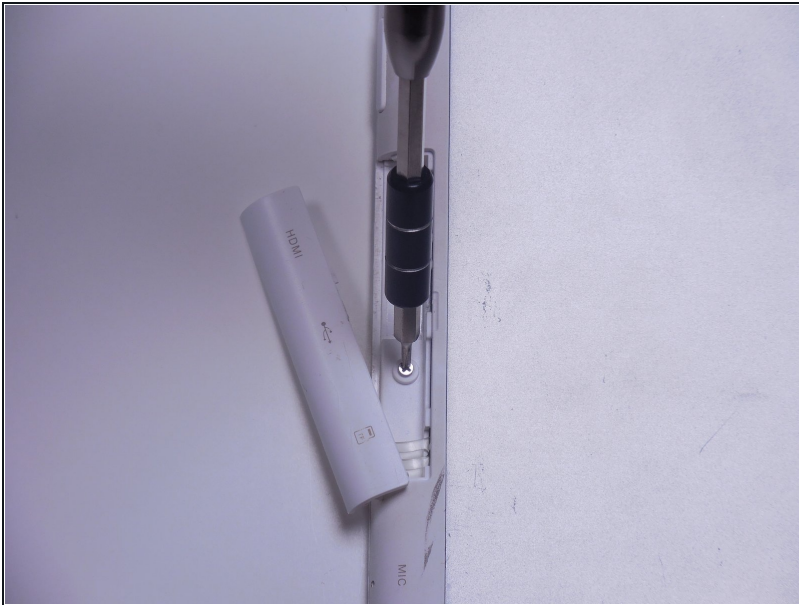
- With the device face down, slide the charging port cover off on the left side of device.

## Step 2



- Locate a Phillips 2.88mm screw at the charging port.

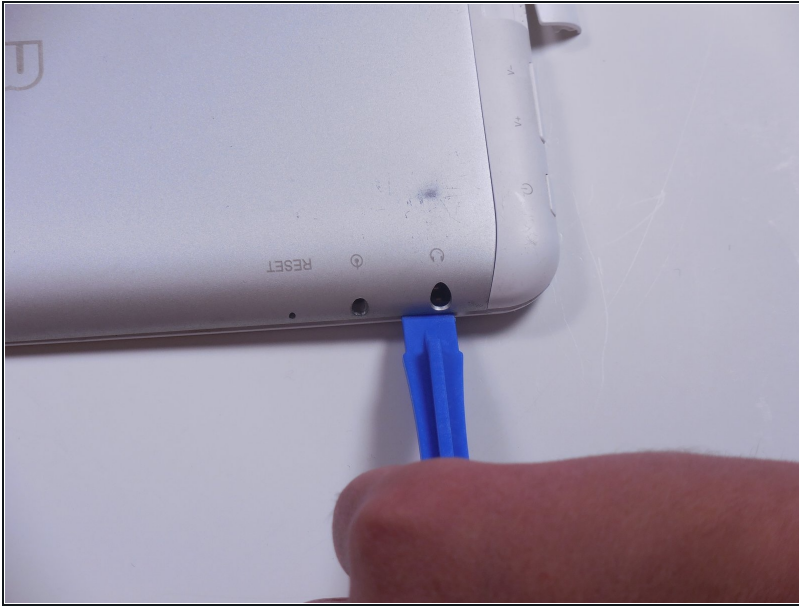
## Step 3



- Use a PH000 Philips head screwdriver to remove screw.
- ① Remember lefty loosey, righty tighty



## Step 4



- To pry the back plate off, use the plastic opening tool between the back plate and front plate; start at the headphone jack.

ⓘ Make sure the lip of the plastic opening tool is face up.

## Step 5



- Move around the device with the plastic opening tool, pushing down to release the back plate from clips.

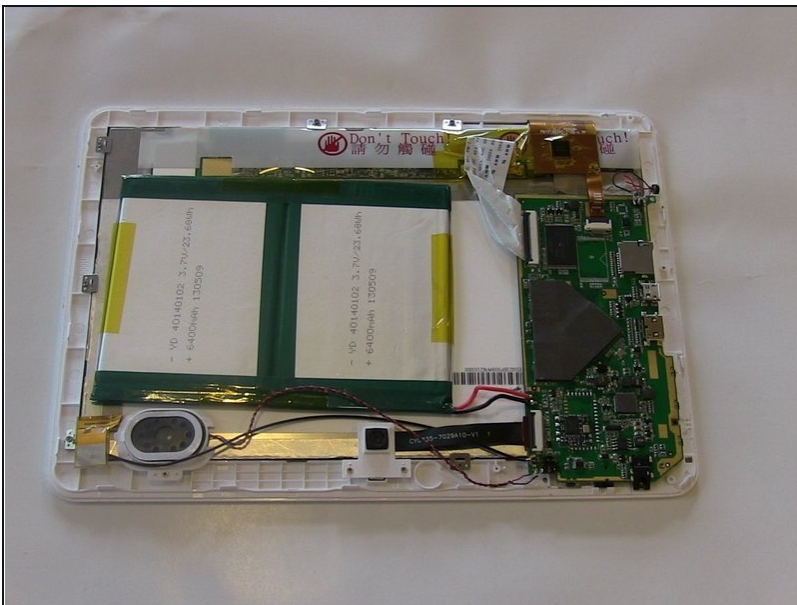
ⓘ You will hear popping sounds when you work around the device.

## Step 6



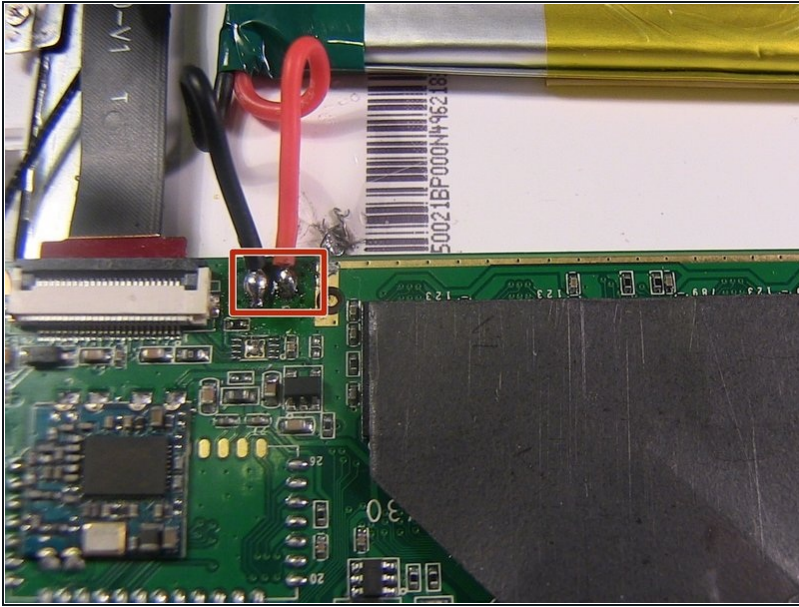
- Once you've moved around the whole device with the plastic opening tool, the back plate will completely release from the rest of the device.

## Step 7 — Battery



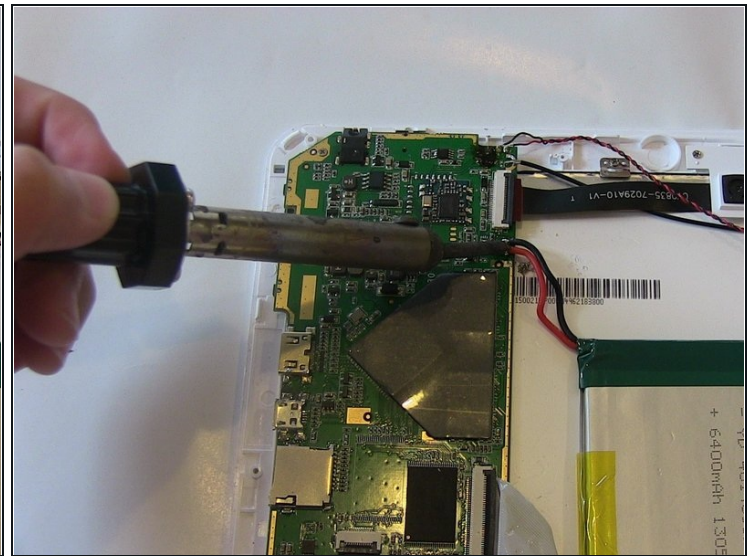
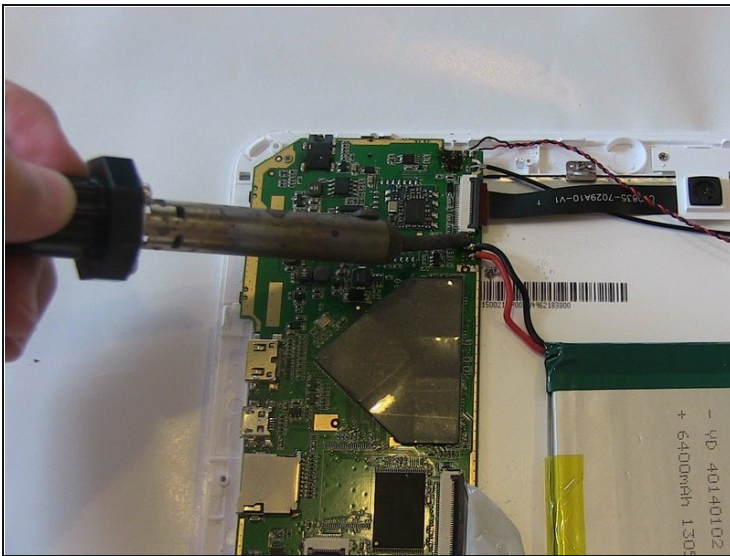
- The battery rests flat on the inside surface of the tablet. It is a rectangular shape and has blue and yellow tape.

## Step 8



- Two wires, one red and one black, which run from the motherboard to the battery, need to be desoldered from the motherboard.
- Review how to solder [here](#).

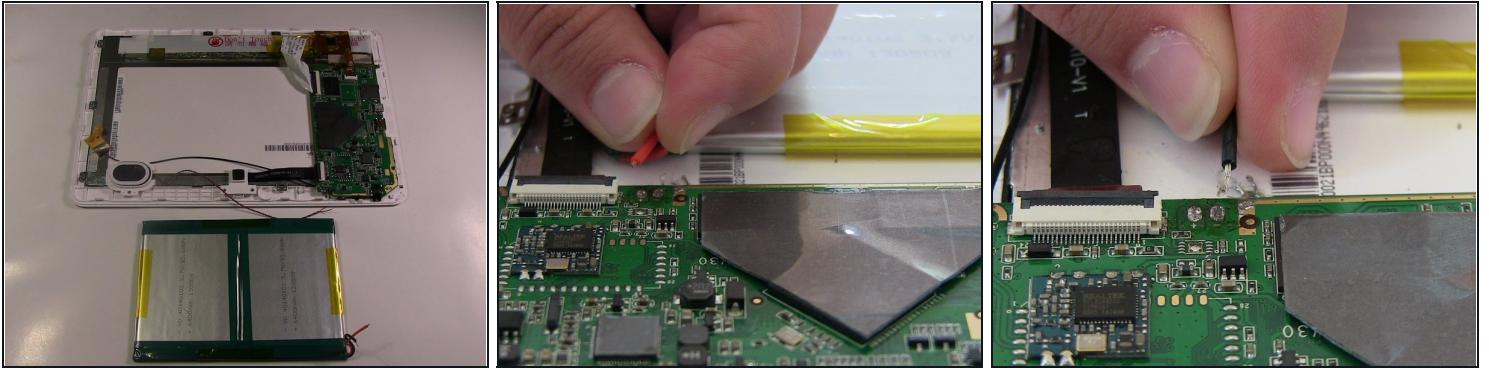
## Step 9



- Work the soldering gun on the red wire where it is connected to the motherboard. It should release from the motherboard.
- Work the soldering gun on the black wire where it is connected to the motherboard. It will release from the motherboard.



## Step 10



- Once both wires have been desoldered, remove the battery from the device.

---

To reassemble your device, follow these instructions in reverse order.