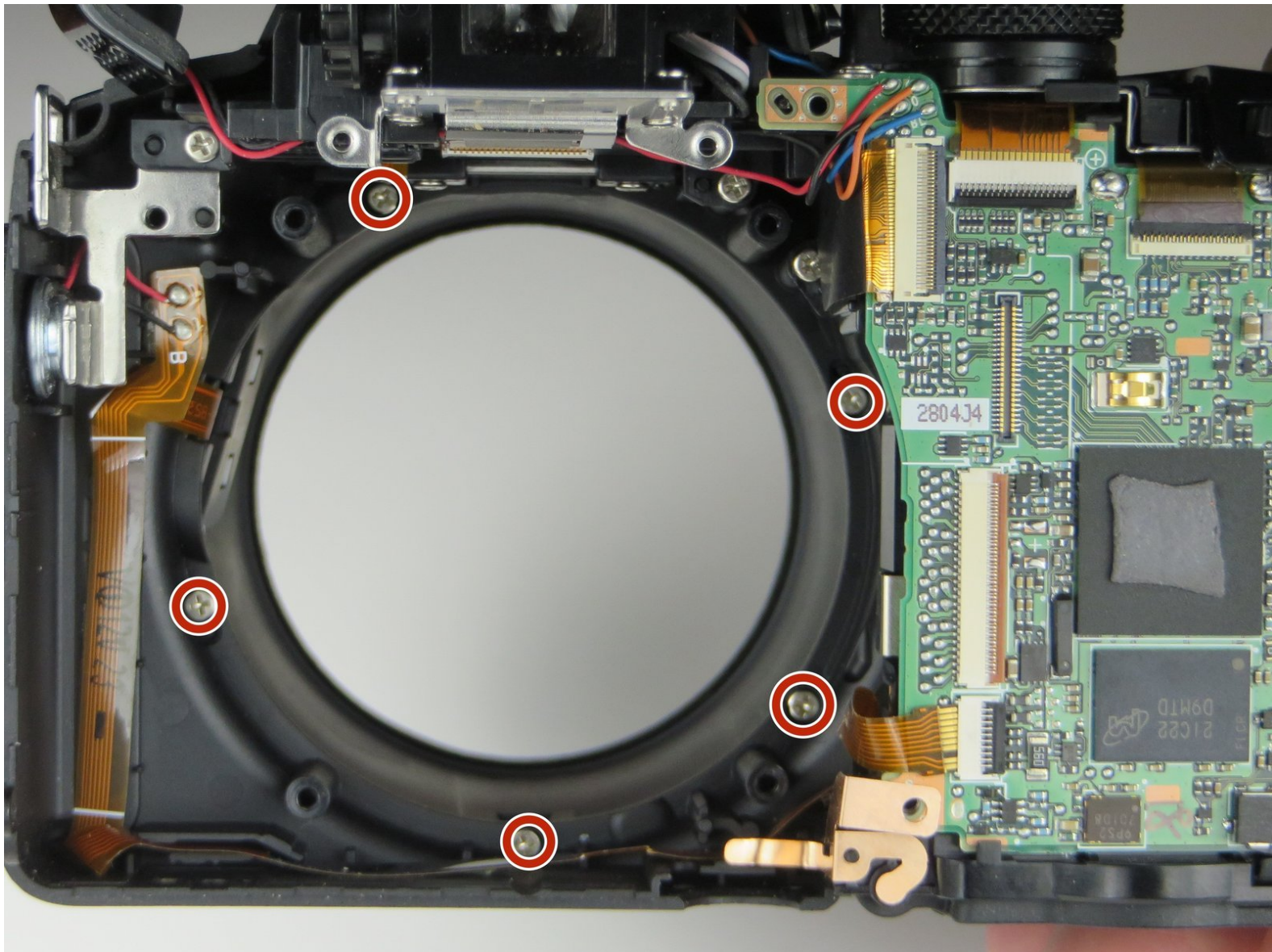




# Nikon Coolpix P510 Lens Casing Replacement

This guide helps you replace the outer lens casing if it has been cracked or damaged.

Written By: Brian Hulsey



# INTRODUCTION

This guide uses the lens assembly guide to get the camera apart. Once you have finished with the lens assembly, getting to the casing is fairly easy.



## TOOLS:

- [Phillips #000 Screwdriver](#) (1)
  - [iFixit Opening Tools](#) (1)
  - [Phillips #00 Screwdriver](#) (1)
-

## Step 1 — Lens Assembly



- Flip the camera upside down and remove six 3mm PH00 Philips screws with a Philips screwdriver.
- On the thumb grip, remove the one 4mm PH00 Philips screw.

## Step 2



- With the camera upside down, remove the three 3mm PH00 Philips screws on the left side.
- ❗ One of the screws are under the HDMI and A/V Out cover.



### Step 3



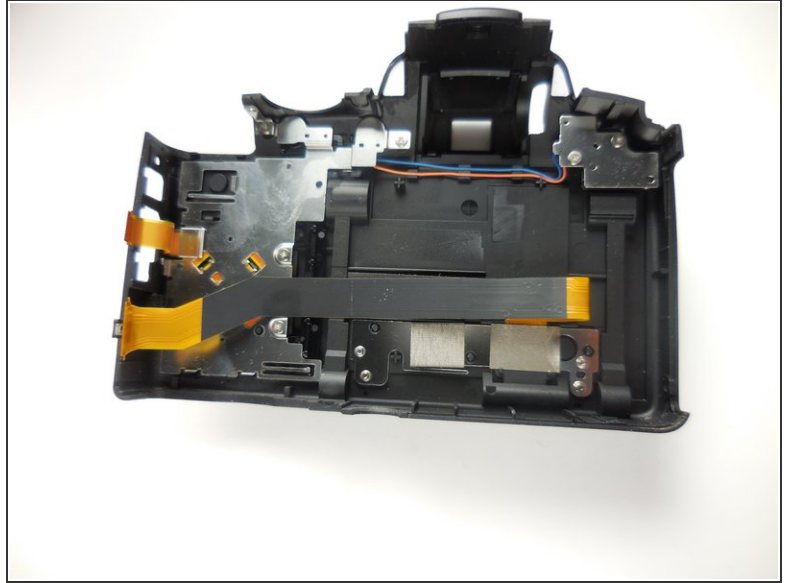
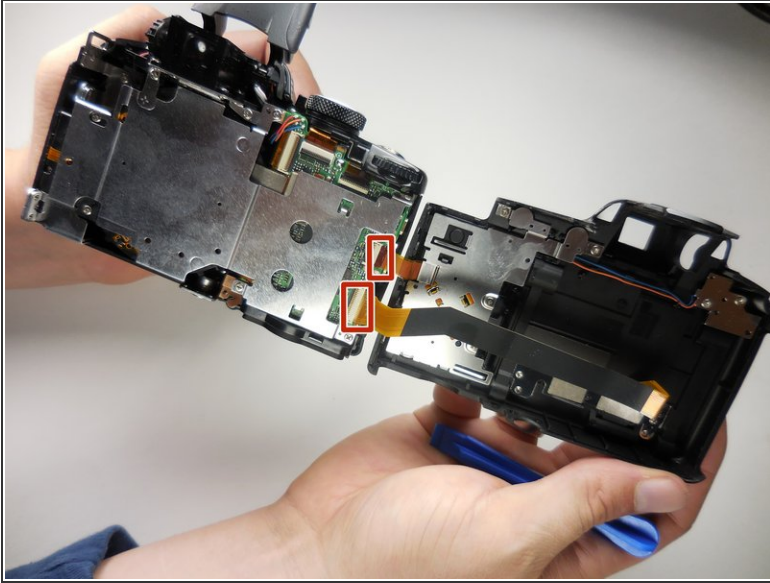
- On the opposite side of the camera, remove the two 3mm PH00 Philips screws.

### Step 4



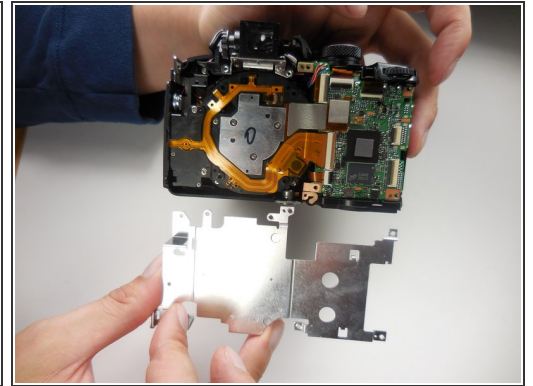
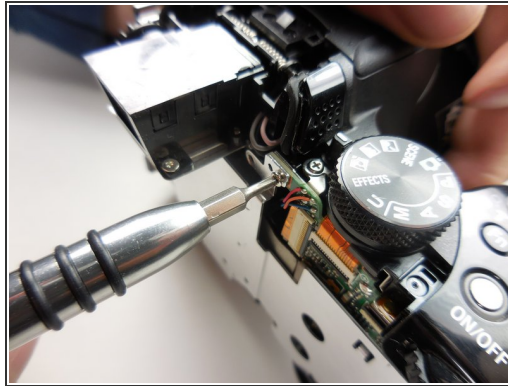
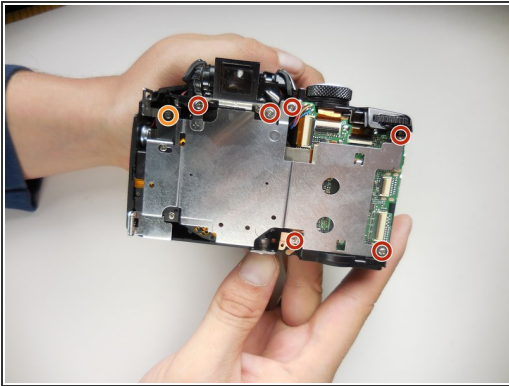
- Open the flash and use a plastic opening tool to pop the tab under it as shown.
- Now pull the casing apart.
- The tripod attachment may fall out on its own, or you will need to pull it out.

## Step 5



- Unplug the two ribbon cables to completely detach the back.

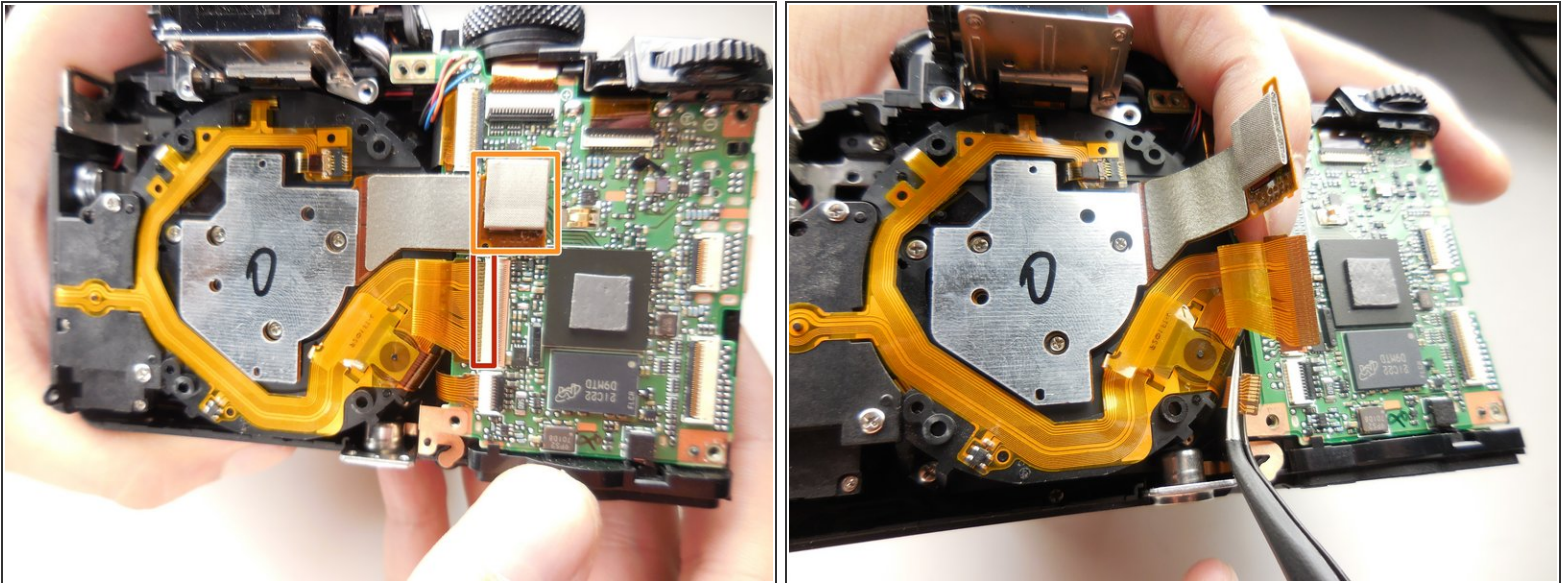
## Step 6



- With the back separated, you need to remove six 3mm PH000 Philips screws with a Philips screwdriver.
- Remove one 5mm PH00 Philips screw
- i To remove the top right corner screw, you may need to lift the corner of the case to gain access to it.
- With all the screws out, the metal plate should simply lift off.

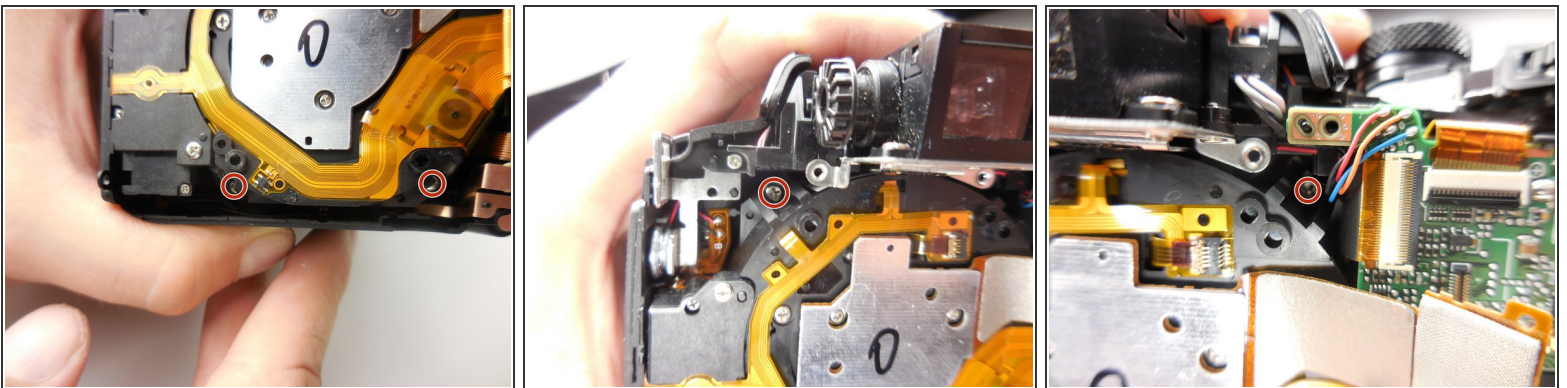


## Step 7



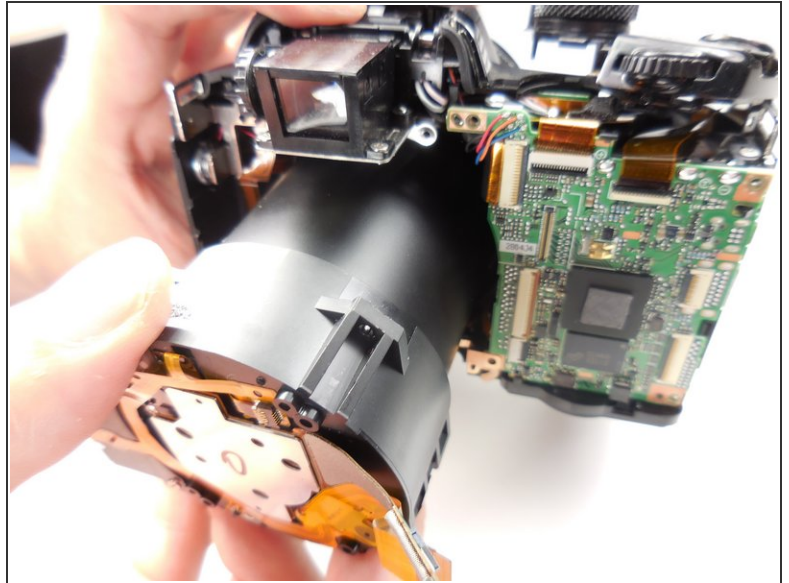
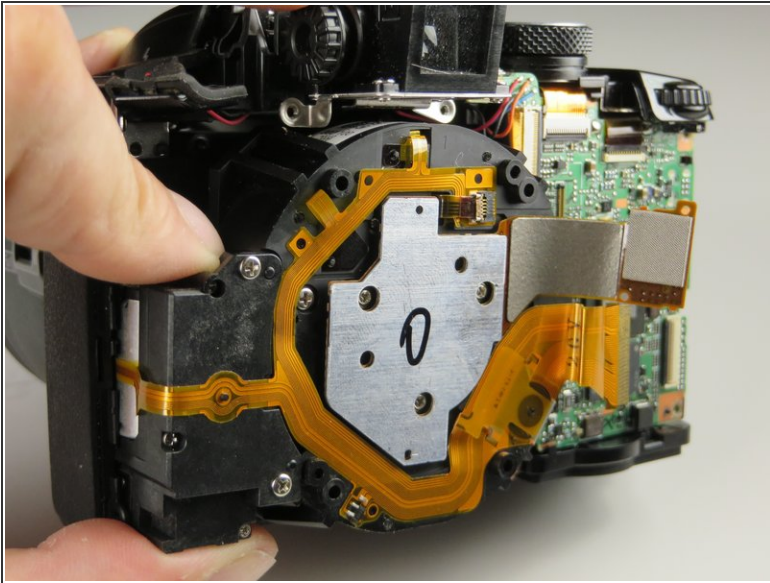
- With the metal plate off, unplug this ribbon cable from the motherboard.
- To remove the flat-topped connector, you simply lift it up to unplug it.

## Step 8



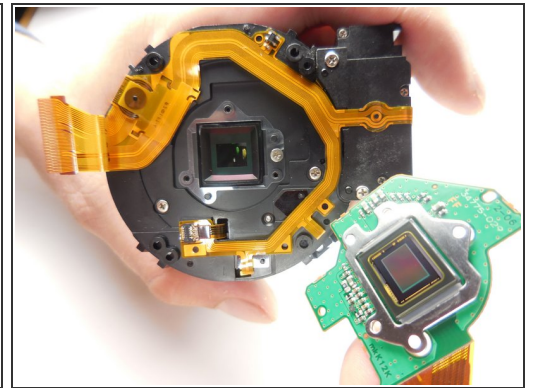
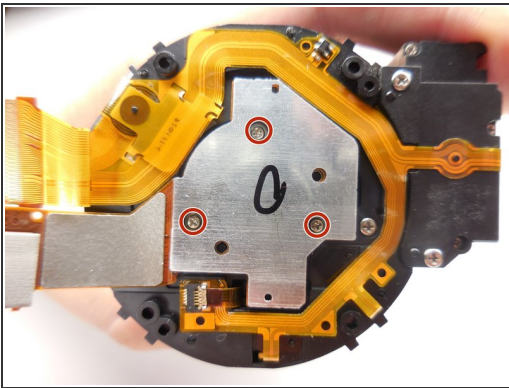
- To get the lens assembly out, you need to remove four 6mm PH00 Philips screws

## Step 9



- With the support screws out, you can simply slide the assembly out of the casing.

## Step 10

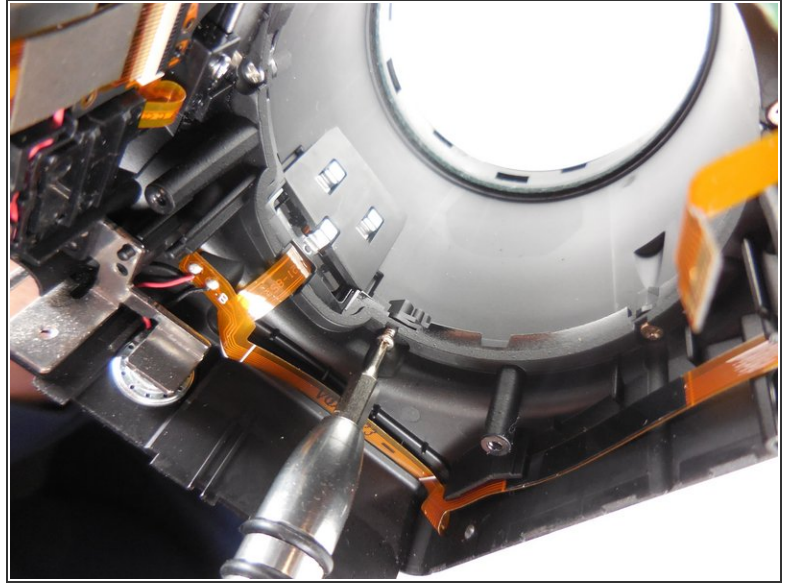
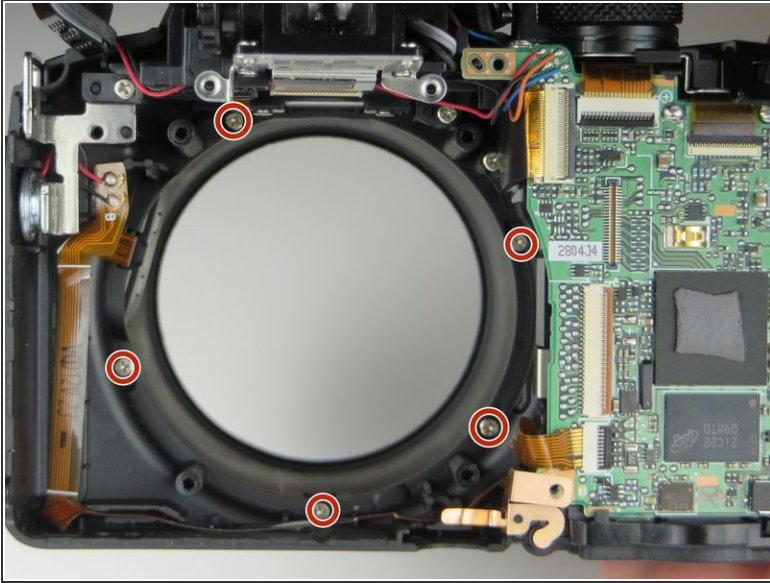


- ☑ If you are moving on to take the lens casing off, you do not need to do this step.

- With the assembly out we need to take of this last piece by removing the three 3mm PH000 Philips screws.



## Step 11 — Lens Casing



- Remove five PH00 Philips screws with a Philips screwdriver.

## Step 12



- Separate the lens casing from the front.
- ⓘ The switch on the side simply slides off of the front casing.

To reassemble your device, follow these instructions in reverse order.