



# Dell Inspiron 15R RAM Replacement

If your laptop is running slow this guide will demonstrate how a user can replace the memory.

Written By: Trixie Gonzalez



---

## INTRODUCTION

The Dell Inspiron is expandable up to 8GB. If the device is running slowly, you can purchase its maximum memory capacity.



### TOOLS:

- [Phillips #0 Screwdriver](#) (1)
-

## Step 1 — Battery



- Turn the device over and locate the battery.

## Step 2



- Place thumbs on each latch and push outwards.

### Step 3



- Push and slide the battery away from you.

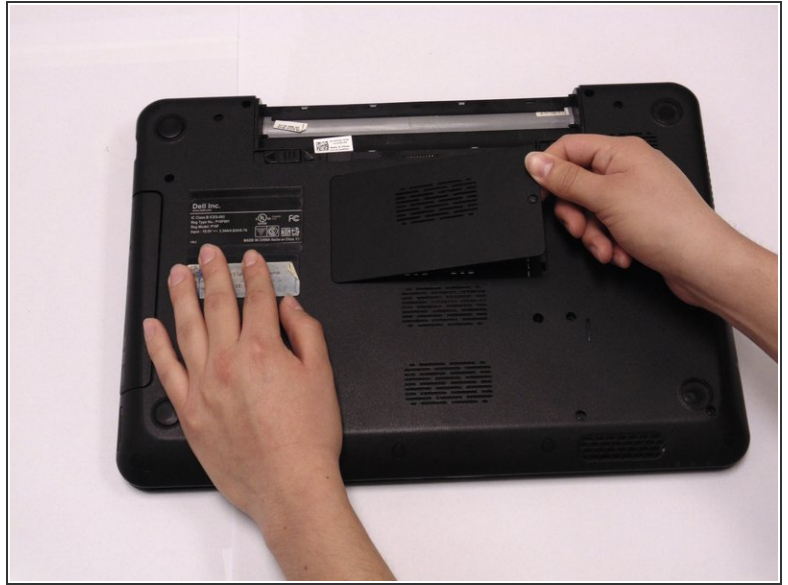
### Step 4 — RAM



- Locate the RAM compartment on the device and locate the screw on the right hand side.

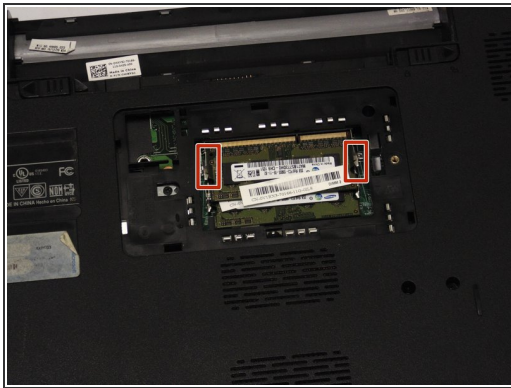


## Step 5



- Take your screwdriver and loosen the screw. Then remove the cover.

## Step 6



- Place both thumbs on the latches and push outward. The RAM card will pop up.

## Step 7



- Carefully hold RAM card from the sides and pull away.

## Step 8



- Repeats steps 6 and 7 for the second RAM card.

To reassemble your device, follow these instructions in reverse order.