



# Lenovo IdeaPad Yoga 11S Trackpad Replacement

In this guide, you will learn how to replace the trackpad.

Written By: Landon Epps



## INTRODUCTION

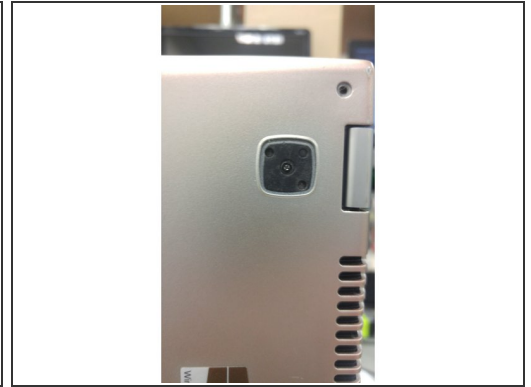
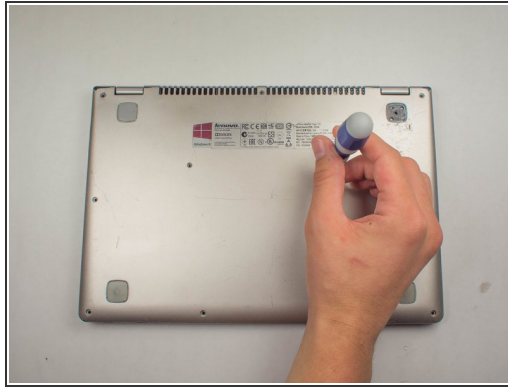
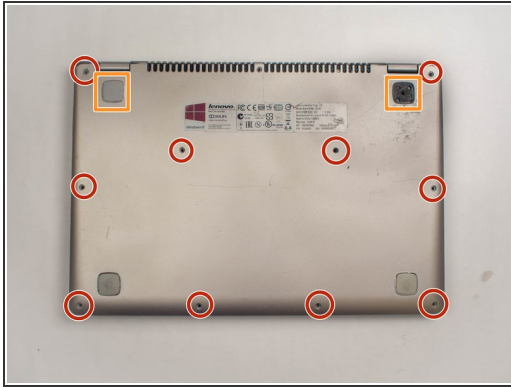
The top assembly of the Yoga 11S must be removed first in order to remove the trackpad. The top assembly contains the trackpad and keyboard, but only the trackpad is replaceable.




### TOOLS:

- [Phillips #0 Screwdriver](#) (1)
  - [Phillips #00 Screwdriver](#) (1)
  - [iFixit Opening Tools](#) (1)
-

## Step 1 — Top Assembly



-  Remember to power off the device before removing any parts.
- Position the laptop so that the bottom enclosure is facing upward.
- Use a Phillips #0 Screwdriver to remove the ten 1.9mm screws holding the bottom enclosure in place.
- Use an opening tool to carefully pry up the rubber pads.
- Use a Phillips screwdriver to remove the two screws under the rubber pads, which secure the keyboard.

## Step 2 — Remove Keyboard



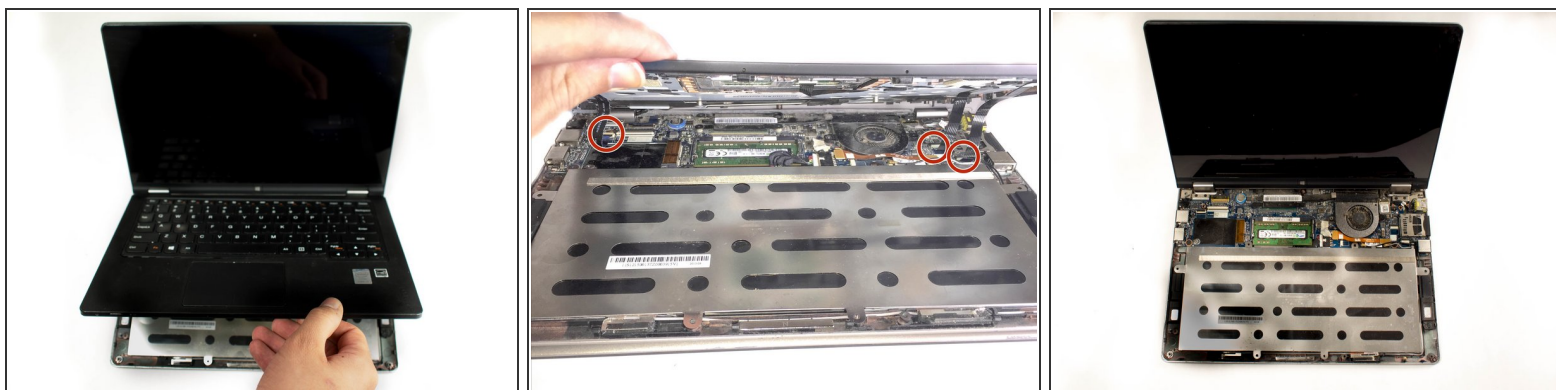
- Flip the laptop over and swing open the display.
- Lift the edge of the keyboard closest to the trackpad up.
- Carefully disconnect keyboard ribbon cable from the laptop.
- Remove the keyboard.

## Step 3



- Remove the two screws securing the midframe.

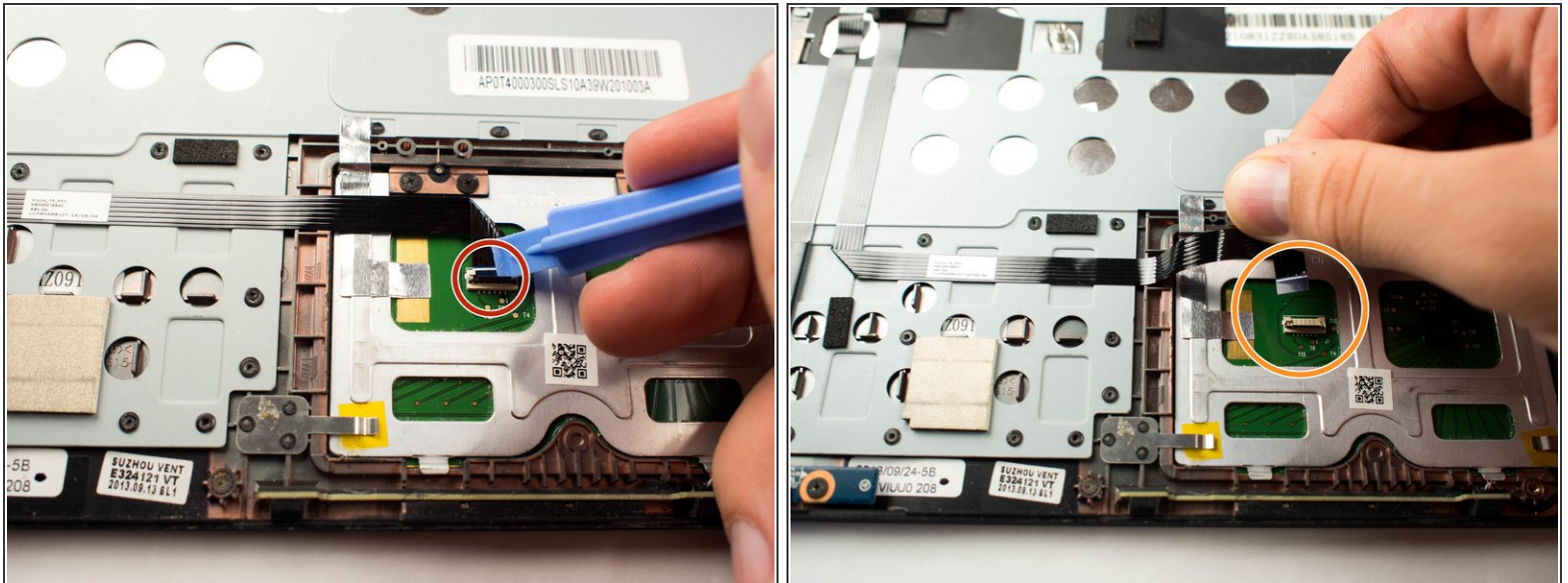
## Step 4



- Grab the front edge of the top assembly and lift it up carefully.
  - ⚠ There are three ribbon cables that attach the top assembly to the motherboard. Lift carefully to avoid damaging them.
- Gently slide the three ribbon cables out of their slots.
- Remove the top assembly completely by pulling it off of the device.

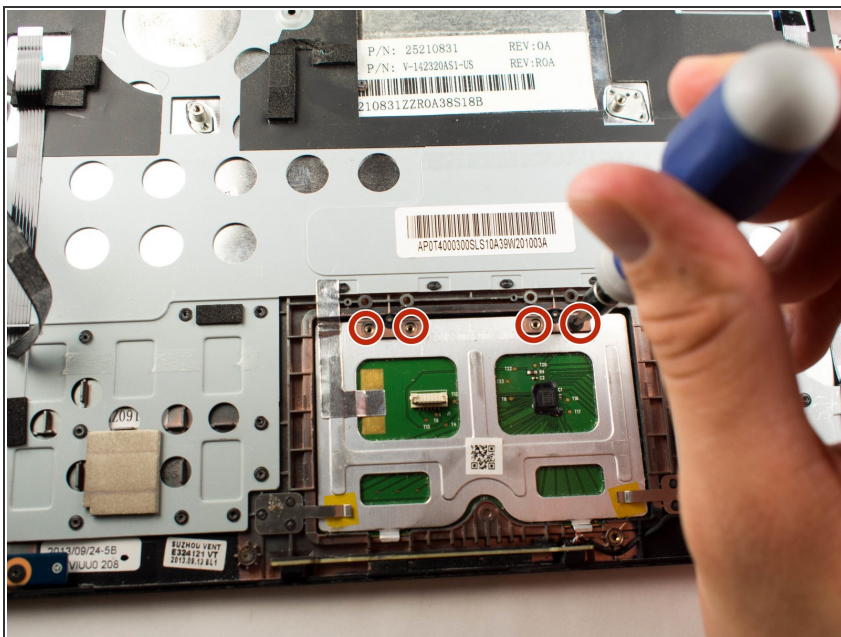


## Step 5 — Trackpad



- Position the removed top encasing where it sits on the keyboard and trackpad. The inside of the top encasing should be upward facing.
- Use a plastic opening tool to lift the retaining flap to disconnect the ZIF connector.
- Gently pull the trackpad cable out of the socket.

## Step 6



- Locate the four 1.6mm screws that connect the trackpad to the top housing.
- Use a Phillips #00 Screwdriver to remove the screws.

## Step 7



- Flip the top assembly over so the keyboard is on top.
- Gently push the trackpad out of its position.

To reassemble your device, follow these instructions in reverse order.