



# iDea USA CT702 Battery Replacement

The Battery Replacement guide for the IDEAUSA CT702 is a structured, step by step manual to replace the CT702 battery.

Written By: Benton Gray



## INTRODUCTION

This simple task of replacing the battery will lengthen the lifespan of the charge on the iDeaUSA CT702.



### TOOLS:

- [iFixit Opening Tool](#) (1)

Flat tip

- [Soldering Workstation](#) (1)



### PARTS:

- [Lead-Free Solder](#) (1)

## Step 1 — Battery



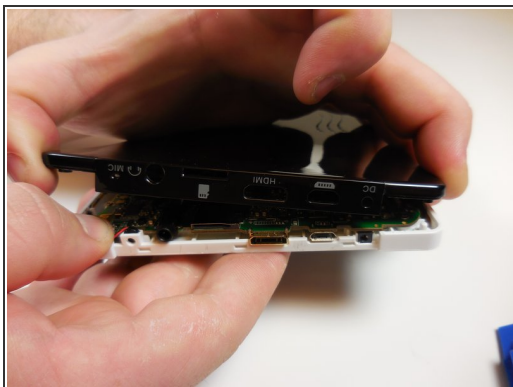
- Face the tablet with portholes facing you.

## Step 2



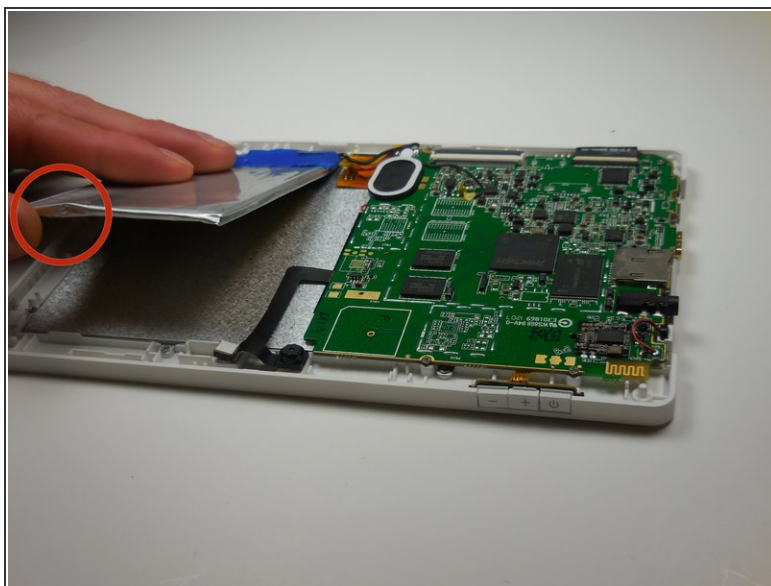
- Use a fingernail or a plastic opening tool to gently pry the black panel around the portholes.
- ⓘ Be gentle and take your time.

## Step 3



- Use your fingers to remove the rest of the back. Slowly apply pressure from each side to detach each clip connection.

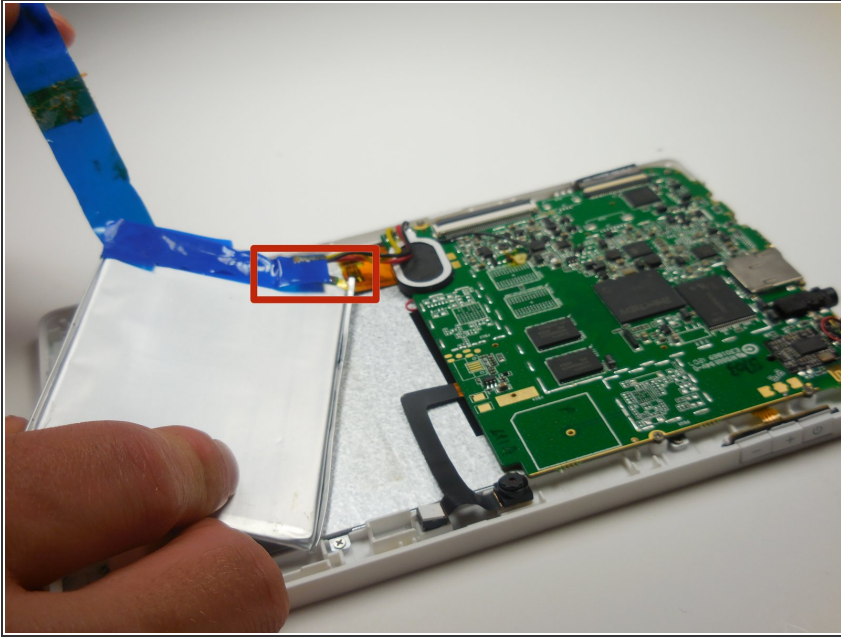
## Step 4



- Separate the battery from the device.
- Slowly use your thumb and forefingers to pry open each corner.

⚠ Be aware of the adhesive on the bottom of the battery. Remove with care to keep battery intact.

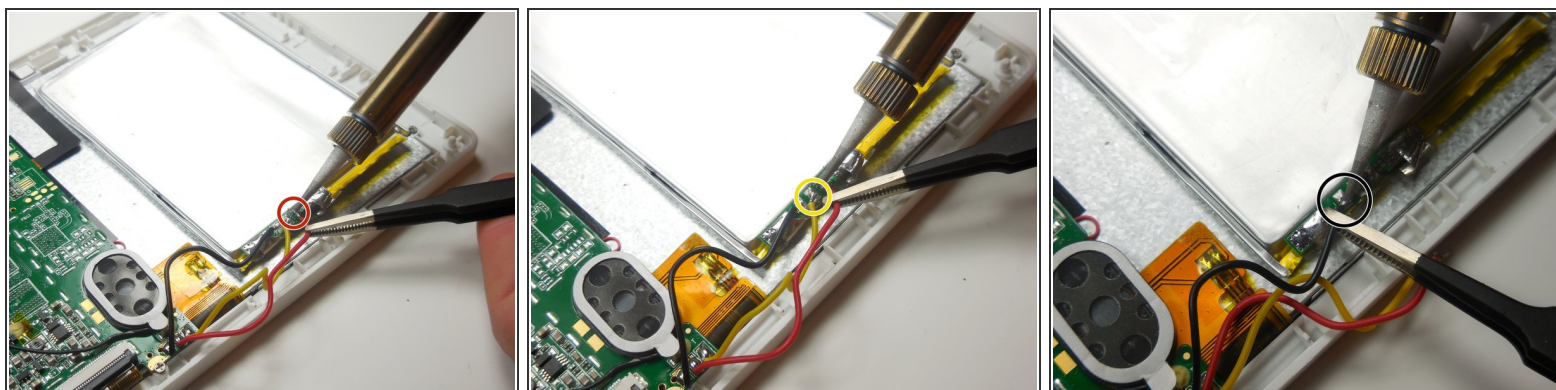
## Step 5



- Carefully peel off tape around the top of the battery.
- Slowly use your fingernail to lift the tape off of the battery. Dispose of the tape or save it for reuse.



## Step 6



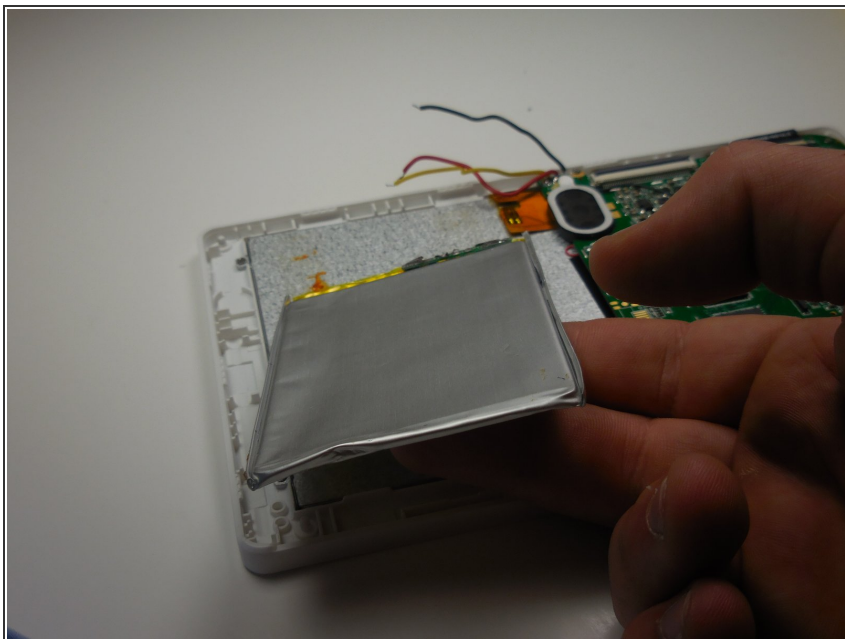
- Disconnect the battery using the soldering iron.

**⚠ Remember to use proper safety precautions when soldering. Solder from the side and do not breathe the smoke in.**

**🔧 Make sure the soldering iron is on the highest heat for 5 minutes before starting.**

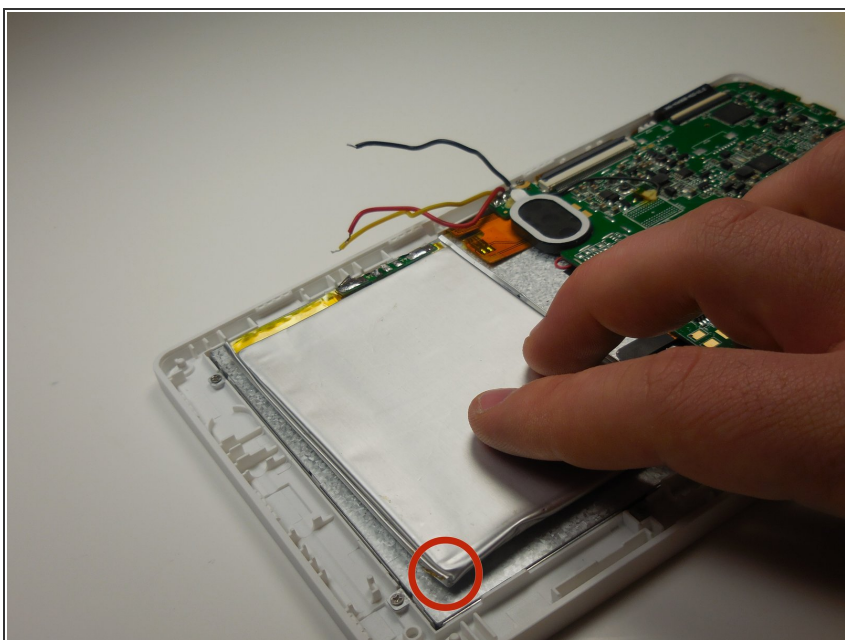
- Start with the red wire, and gently touch the tip of the iron onto the connection.
- Move to the yellow wire after the red.
- Move to the black wire after the yellow.

## Step 7



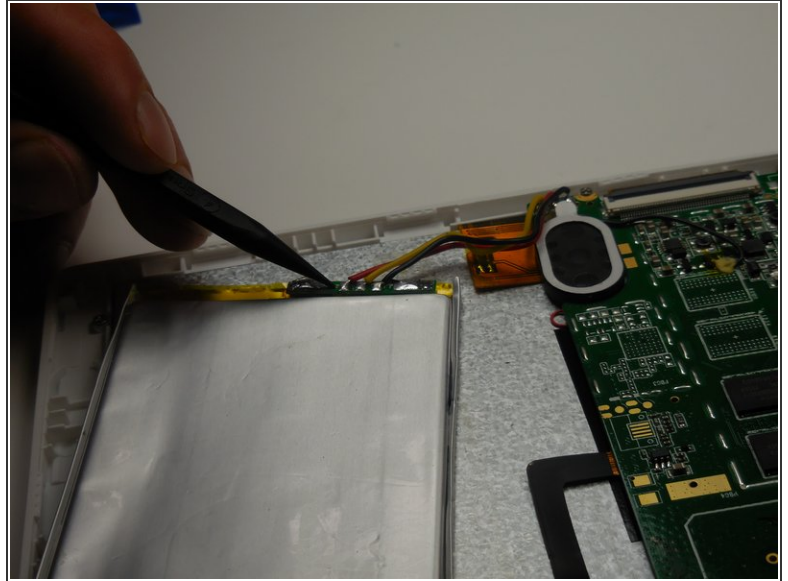
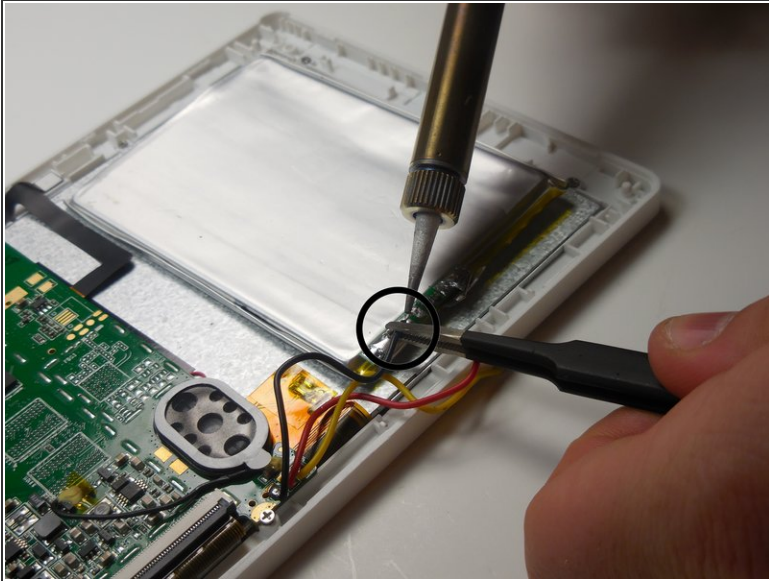
- Remove the battery completely. Dispose of the defective battery properly at a recycling center.

## Step 8



- Put the new battery in place
- Make sure the corners are inside of the white shell.

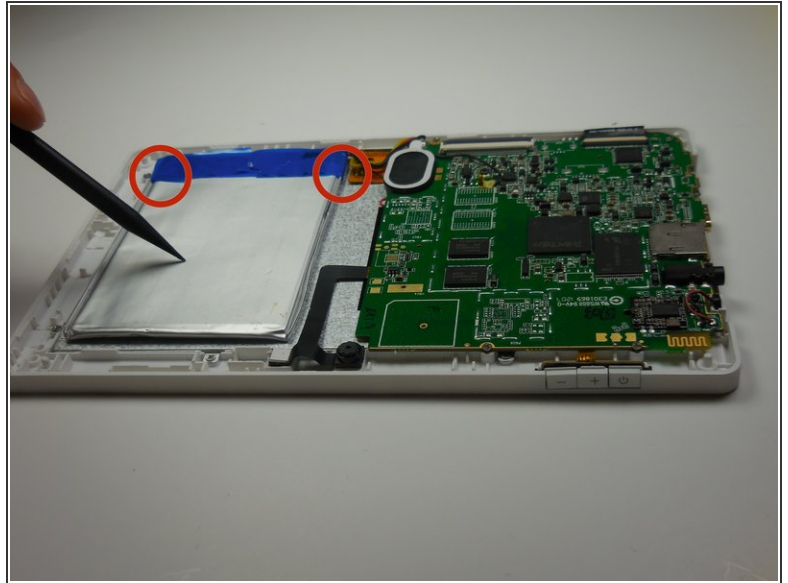
## Step 9



- Solder the new battery.
- Start with the black wire and solder to the nearest connection.
- Move to the yellow wire and solder to the middle connection.
- End with the red wire and solder to the farthest connection away.



## Step 10



- Re-tape the battery at the top.
- ⚠ Make sure the solder has cooled before taping.
- Tape the corners in place, onto the shell.
- To replace back cover, follow the first three steps in reverse order.

To reassemble your device, Start from step 9 and work backwards.