



Panasonic Lumix DMC-ZS8 Screen Panel Replacement

We will be disassembling the necessary parts of the camera so we can replace the screen panel.

Written By: Trevor Meyers



INTRODUCTION

This guide will show you how to remove all of the exterior panels of the camera in order to remove and replace the LCD screen panel.



TOOLS:

- [Mahi Driver Kit - 48 Bit Driver Kit](#) (1)
-

Step 1 — Screen Panel



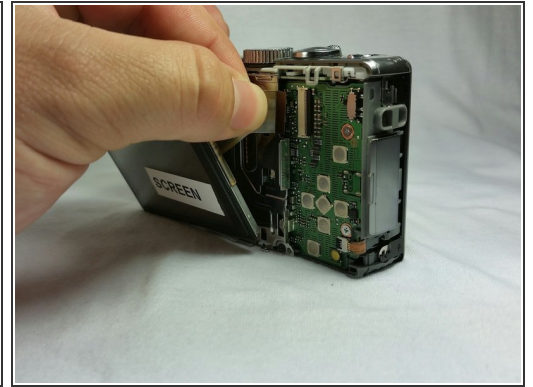
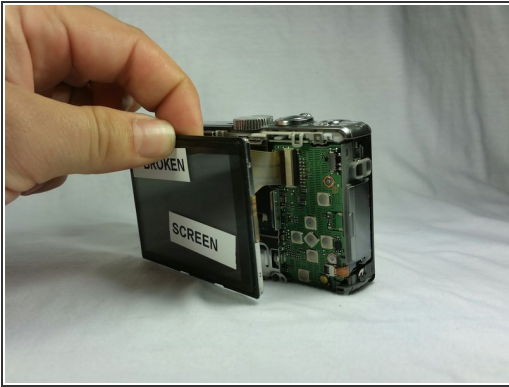
- Remove all four screws from the side panels.

Step 2



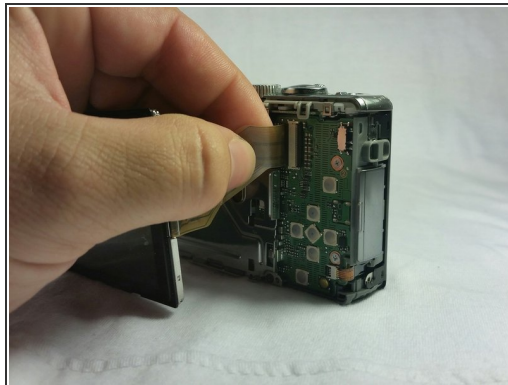
- Remove the two screws from the bottom of the back panel.
- Remove the back panel as shown in the second and third pictures.

Step 3



- Remove the screen from the mounting bracket.
- Slide the wiring from the board connection.

Step 4



- Reconnect the new screen wiring into the motherboard as shown in the picture. Replace the new screen into the mounting bracket.

Step 5



- Replace the front panel and install the screws on the bottom side of the camera.

Step 6



- Replace the side panels and replace the four screws to secure the side panels.

Step 7



- This is what your newly replaced screen should look like.

Now you have a new screen for your Panasonic DMC-ZS8.