



# LG Tone Pro HBS750 Magnet Replacement

This guide will help the user replace the magnet inside the device if the magnet no longer holds the earphone in properly.

Written By: Andrew Oglesby





## TOOLS:

- [X-ACTO Knife](#) (1)
- [64 Bit Driver Kit](#) (1)



## PARTS:

- [Rare Earth Magnet](#) (1)

## Step 1 — Magnet



- Find the side of the device with the defective magnet. Remove the rubber piece on the underside of the device that protects the screw.

## Step 2



- Remove the small screw from the underside of the device and place it aside.

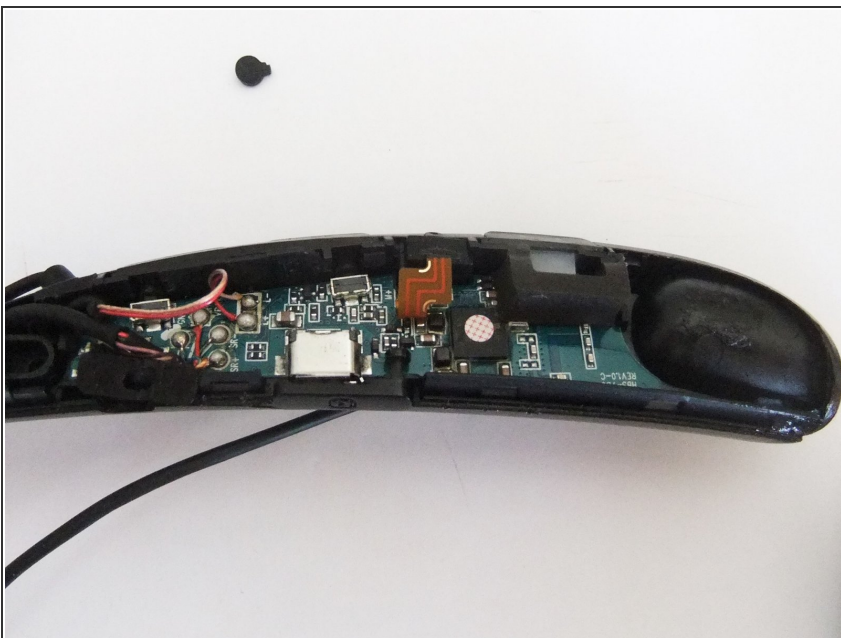


### Step 3



- Place a small prying tool in between the two cases and slowly push the two apart. Be sure not to force the case apart, as it may snap in the process.

### Step 4



- Once the case is open, the small magnet is now visible and can be replaced.

## Step 5



- Once the new magnet is in place, the casing can be pushed back together.

## Step 6



- The small screw that was taken out at the beginning can be screwed back into the device.

## Step 7



- Push the small rubber piece back into place over the screw.