



# Pentax Optio WG-3 GPS Menu Button Replacement

These following instructions will walk you through how to change the menu button on your device.

Written By: Allison Merdian





## TOOLS:

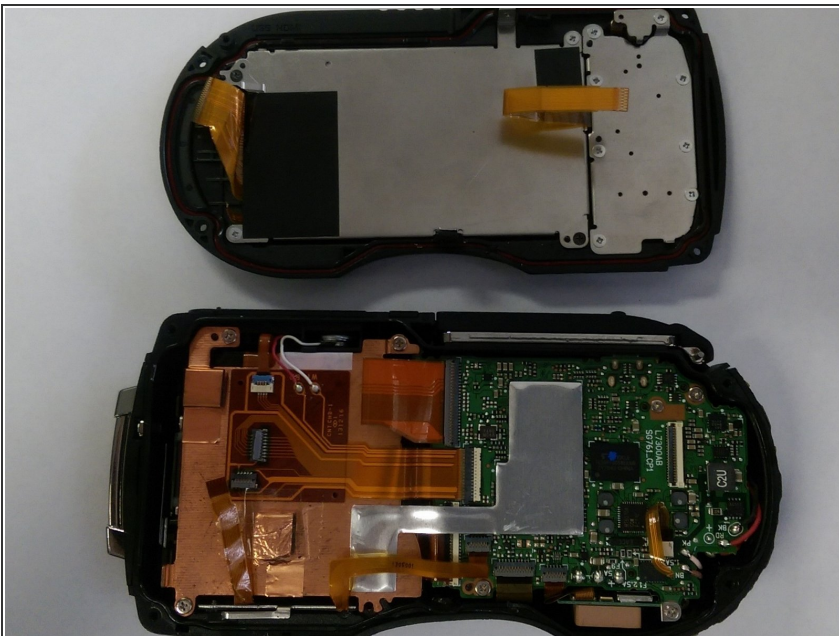
- [Phillips #00 Screwdriver](#) (1)
- [iFixit Opening Tools](#) (1)
- [Tweezers](#) (1)

## Step 1 — Menu Button



- Remove the 6, 5 mm screws, 4 on each corner and 2 on the sides of the device.
- ⓘ One of the side screws is hidden under the top lining of the device. The lining is glued down to the device so you will have to peel the lining back using tweezers. After you are finished with your work you will have to use glue or adhesive to re-stick the lining back to the device.

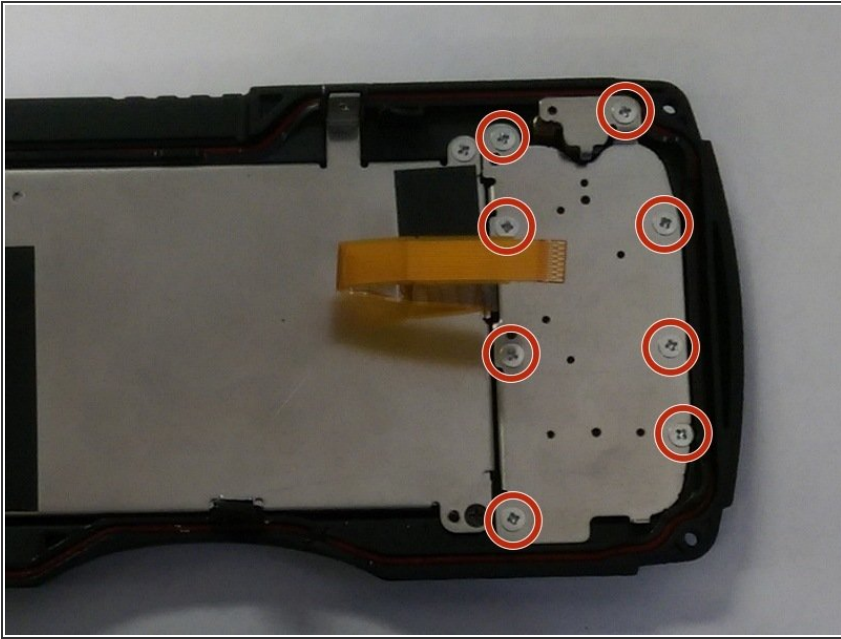
## Step 2



- With the small plastic pry tool lift the back of the camera off carefully.
- ⚠ Open the device slowly and be aware of a few flex cables that connect the mother board to the screen. These will have to be carefully disconnected before the top part is removed.



### Step 3



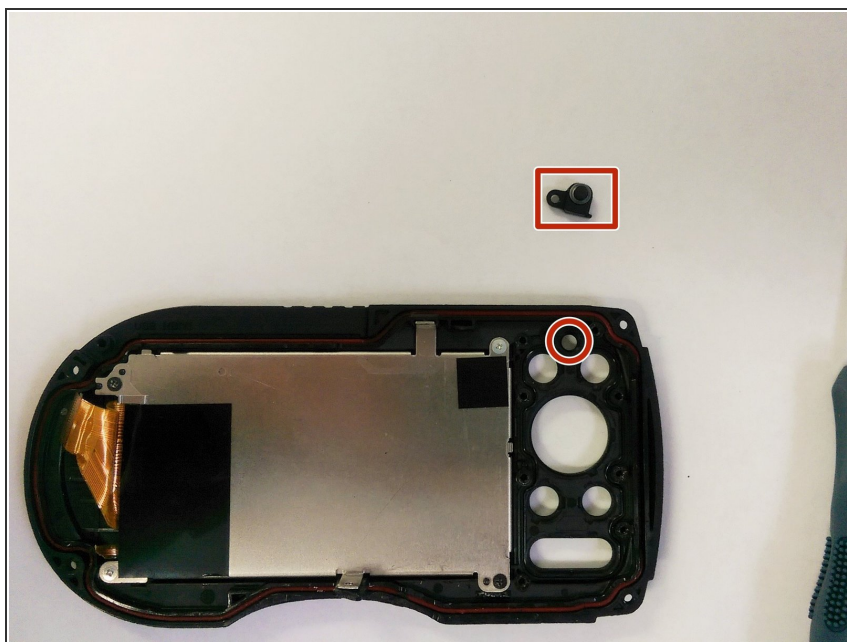
- Remove the 8, 2 mm screws from each corner of the metal button pad cover.
- Using tweezers remove the metal cover.
- ❗ The smaller Metal square piece on the device.

### Step 4



- Remove the 1, 2 mm screw near the edge of the device.

## Step 5



- Now using tweezers, remove the menu button from its place.
- After removing the button you can replace the entire component.

To reassemble your device, follow these instructions in reverse order.