



Sony Reader Wi-Fi PRS-T3 E-Ink screen Replacement

Use this guide to replace the e-Ink screen of your Sony Reader Wi-Fi PRS-T3. ED060XC5(LF)C1 screen have been used as a new part.

Written By: mrdkonst



INTRODUCTION

This article is devoted to replacement of e-Ink screen on your Sony Reader Wi-Fi PRS-T3. The main difficulty is to remove old double-sided tape by which screen holds on main body.

ED060XC5(LF)C1 screen have been used as a new part.



TOOLS:

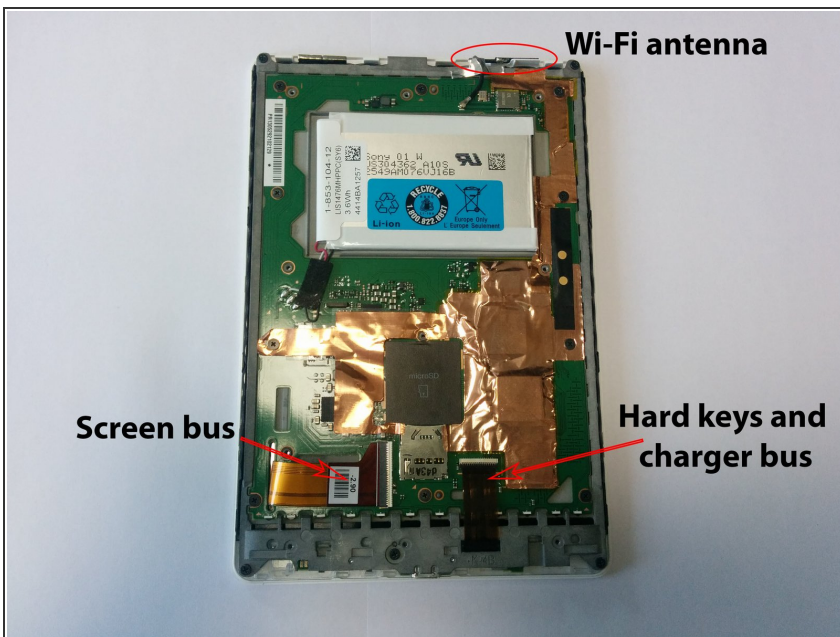
- [Essential Electronics Toolkit](#) (1)
-

Step 1 — Disassembling



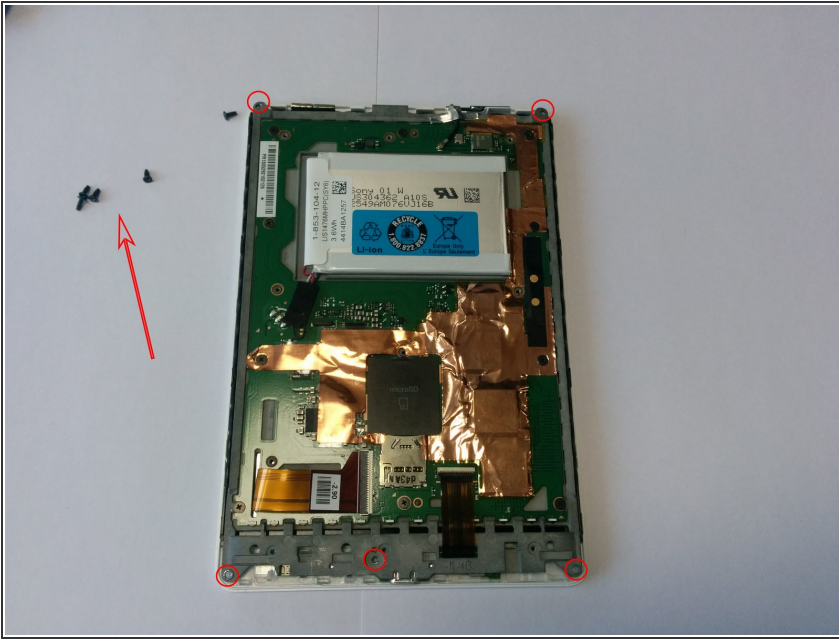
- Detach the back cover from the e-reader
- Remove the black sticker, uncovering three additional screws. The sticker comes loose quite easy.
- Unscrew all 10 screws (length 3.2mm).
- Now take a spudger, and start opening the case at the top. There are four retaining clips at each side.

Step 2



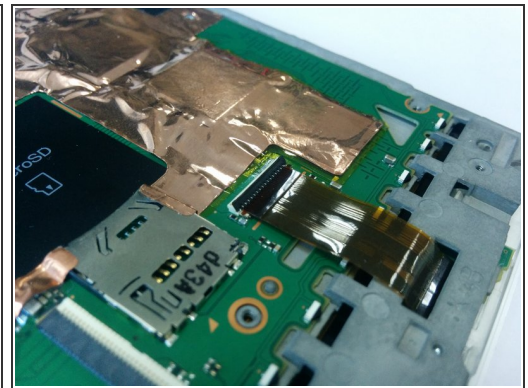
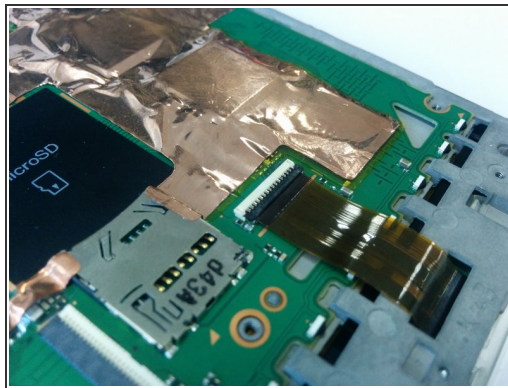
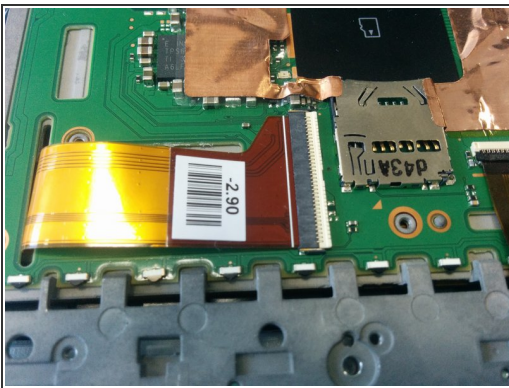
- Under the cover you'll find many interesting things.

Step 3



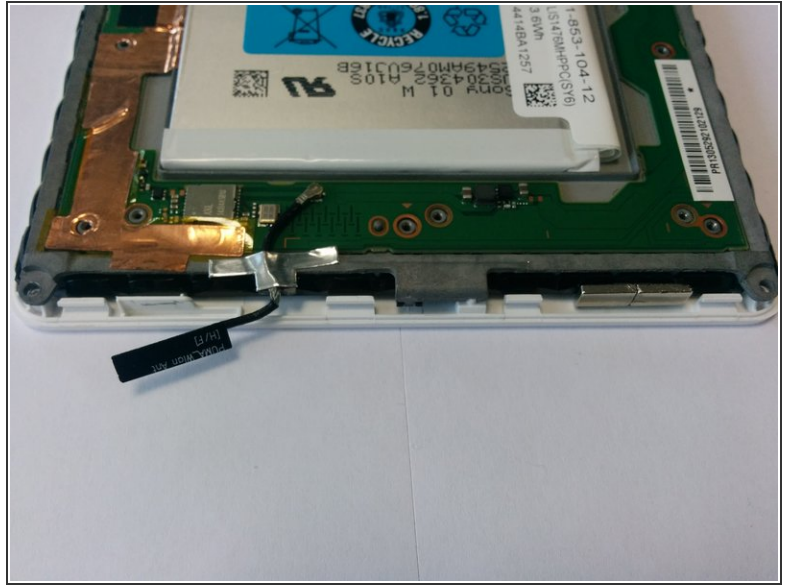
- Unscrew these 5 screws (length 4.3mm) . They hold the front bezel (white or black part of the main body).
- There are other screws that hold the motherboard (10×, 1.8mm) to the grey back plate. You do not need to remove them, unless you want to remove the electronics board (for example to prevent damage when cleaning the back plate in a later step).

Step 4



- Carefully unplug buses. For the screen bus. Simple pull it from connector. For the hard keys bus . First, open the connector by hook it from below. Then it'll be easy to unplug the bus.

Step 5



- Carefully unglue the Wifi antenna.

Step 6



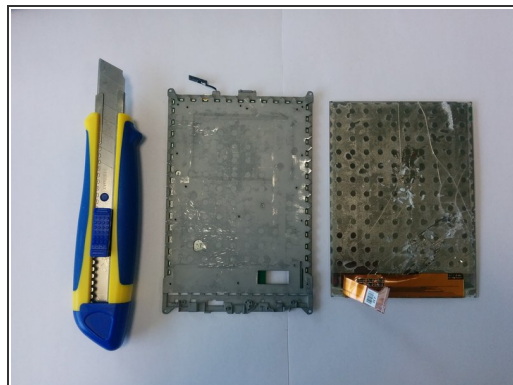
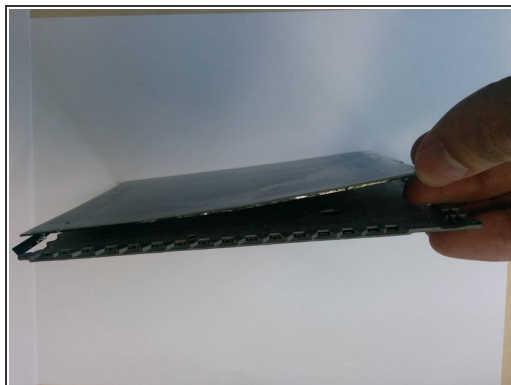
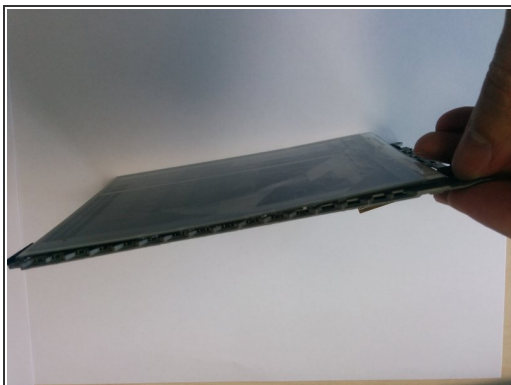
- Now we need to remove a white cover. It holds by clips around the body. Please, pay attention to hooks in red ellipses on the photo. On the second photo you may see detached white cover.

Step 7



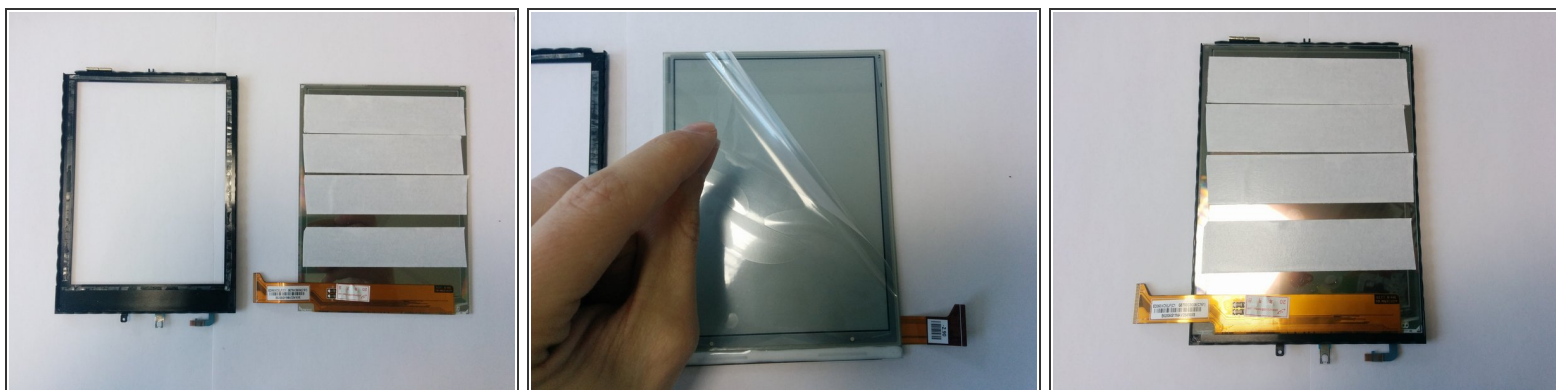
- Unscrew screws marked by red circles.
- Carefully unplug a bus
- Be careful, do not lose this tiny thing!
- Remove black frame. It's attached to the screen by double sided tape

Step 8



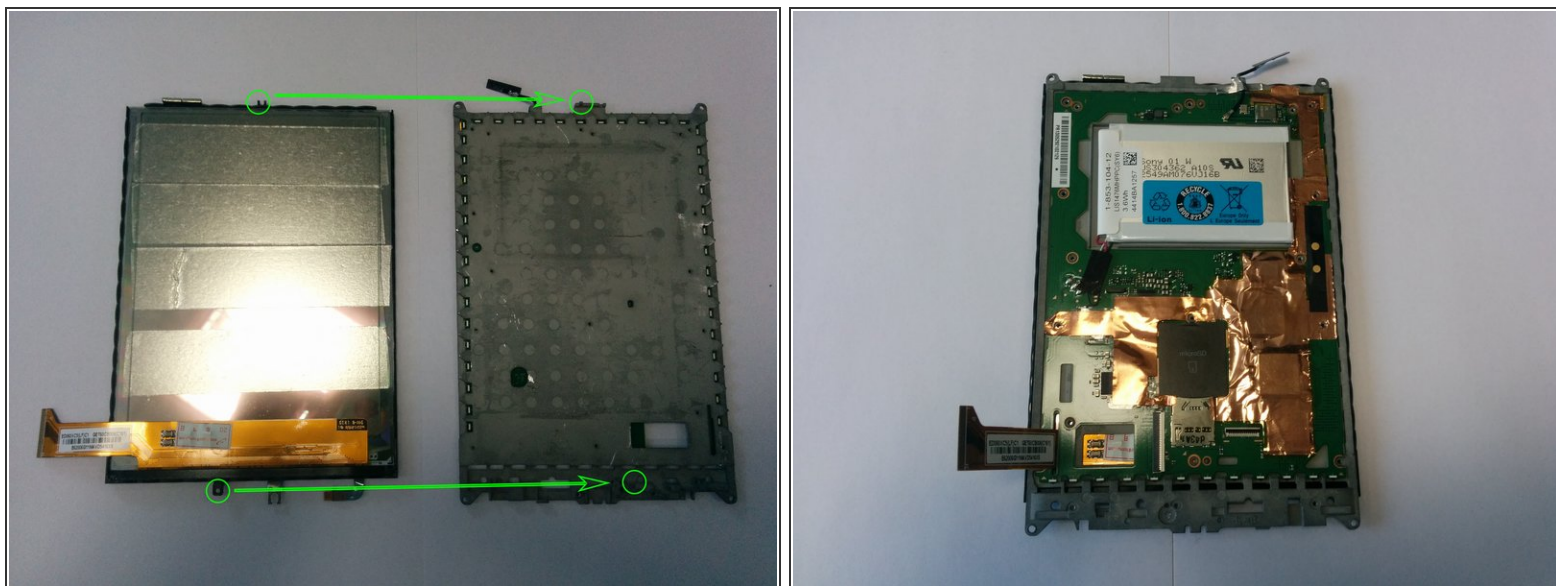
- Use any suitable knife to detach broken screen from metal plate. Please, be very careful. Do not hurt yourself!
- After you did this. You need to clean metal plate from the remnants of glue and double sided tape.

Step 9 — Screen assembling



- Take a new screen. Apply double sided tape on back side.
- Remove protective film from the screen
- Put the screen into the black frame. Upper side of the screen should touch upper side of the frame.

Step 10 — Gluing the screen to the surface



- Carefully join the screen in a black frame with the metal plate.
- Continue assembling in a reverse order

To reassemble your device, follow these instructions in reverse order.

This document was generated on 2020-11-20 12:50:53 PM (MST).

