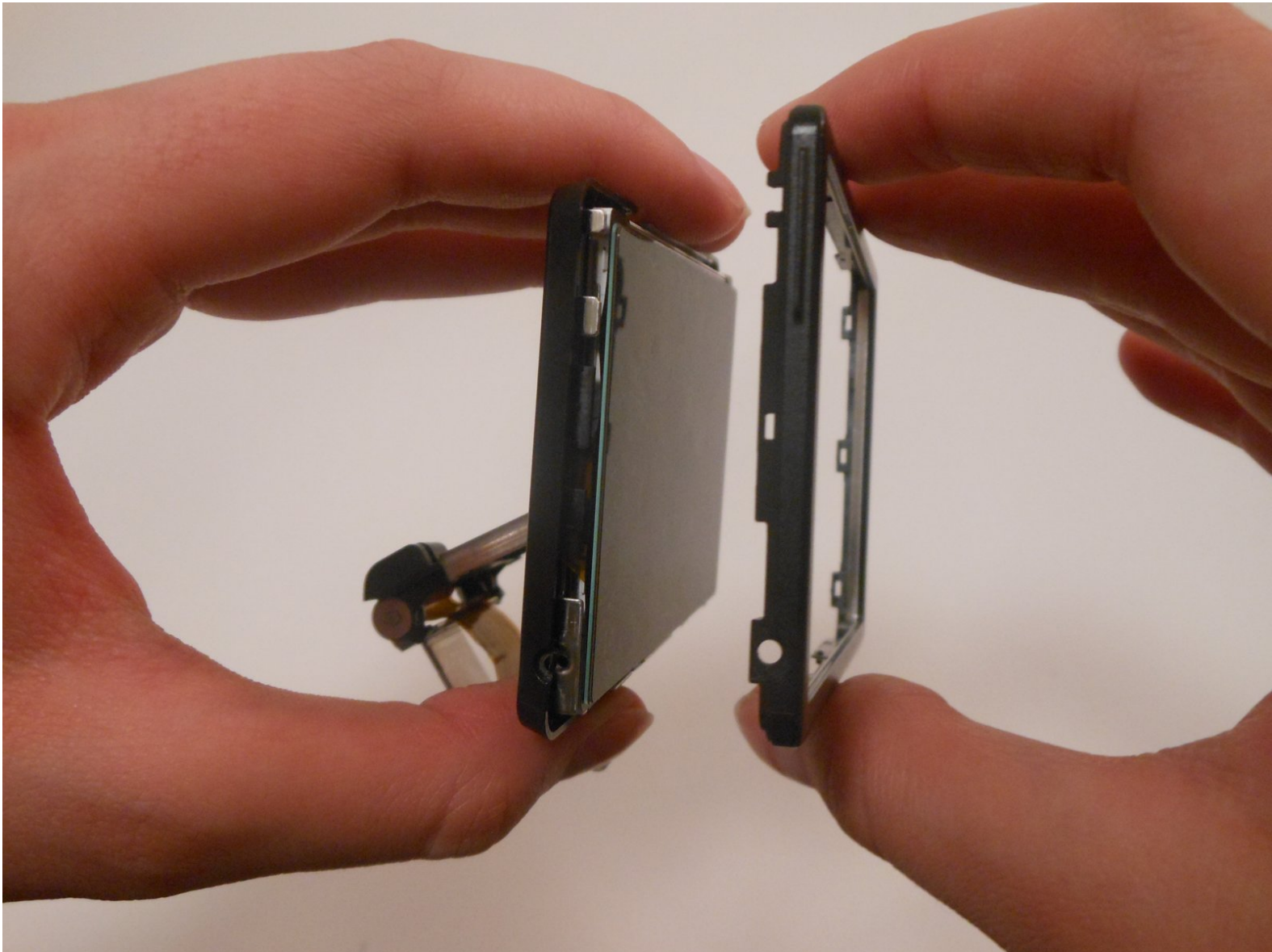




Sony Cyber-shot DSC-HX100V LCD Screen Replacement

This guide will display how to disassemble your camera to replace the screen.

Written By: DaQuawn



INTRODUCTION

If your screen is cracked, broken, scratched, or otherwise in need of replacing, this guide will show you how to disassemble your camera, remove the screen, and replace it with a new one.



TOOLS:

- [Phillips #00 Screwdriver](#) (1)
 - [Spudger](#) (1)
-

A close-up photograph of the back of a Sony Cyber-shot digital camera. The camera is black and textured, with 'Cyber-shot' printed in white on the upper left. Below it is a speaker grille with 'STEREO' text. To the left of the screen, 'HD 4MCHD' and 'GPS' are visible. The LCD screen is partially visible at the bottom. On the right side, there are several controls: a multi-selector wheel with icons for W (Wide), T (Tele), Q (Quick), and a custom button; a 'W FOCUS' button; a 'T CUSTOM' button; an 'ON/OFF' power switch; a 'FINDER/LCD' toggle; and a mode dial with settings like SCN, P, A, S, M, and others. The camera is being held by a person's hand, with fingers visible on the sides.

- 



- Remove 1 screw next to the eyepiece.

Step 3



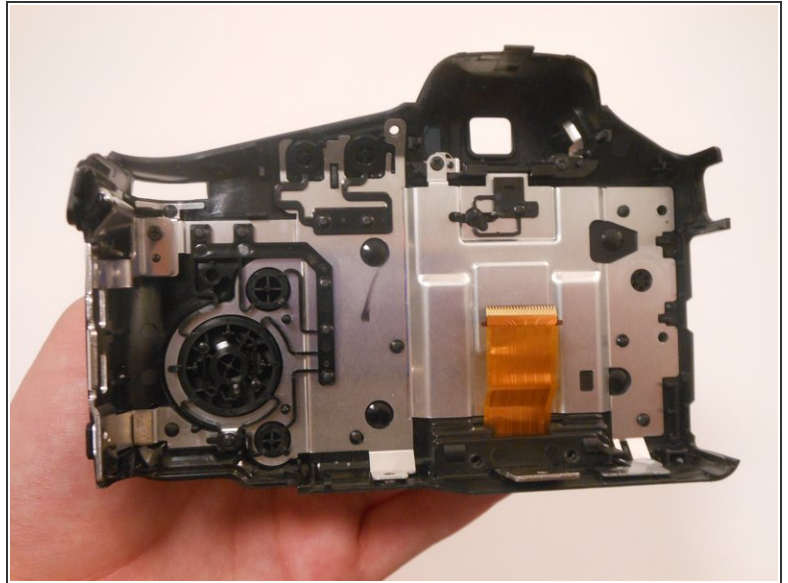
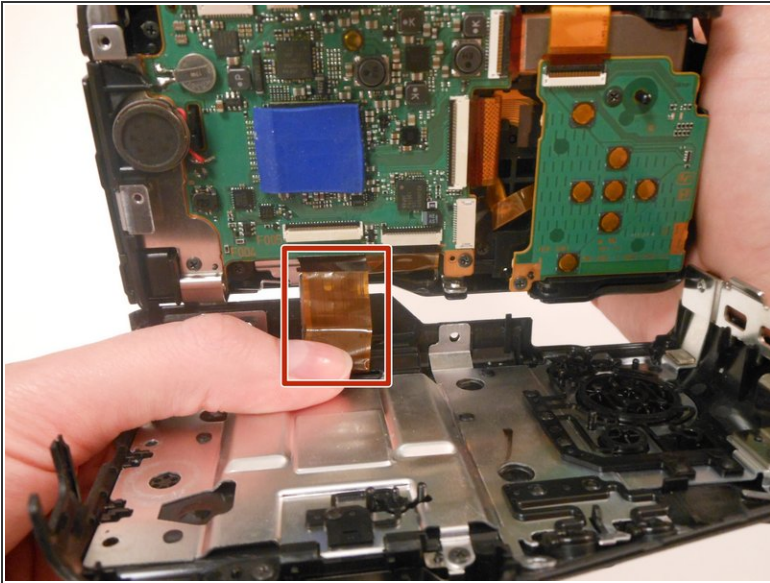
- Tilt the screen forward.
- Remove the two 1.59mm #00 screws on the left with the Phillips #00 screwdriver.

Step 4



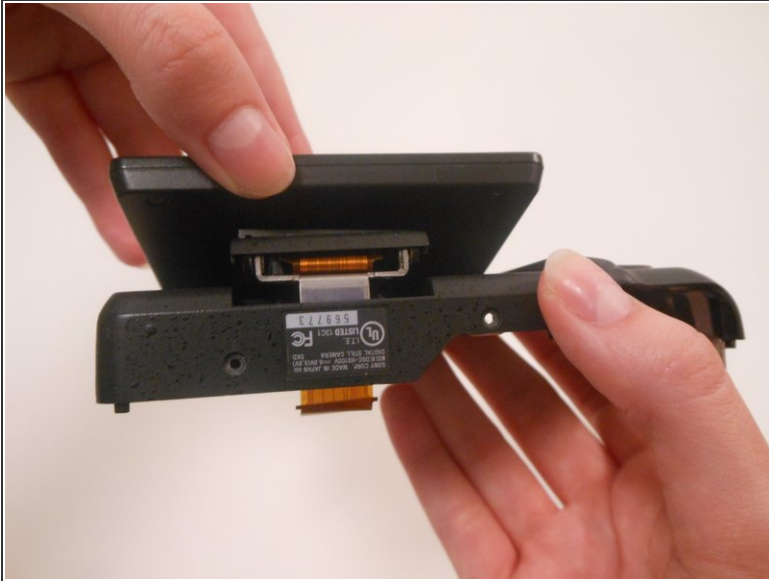
- Pull the back panel of the camera upward.
- ⓘ Use the spudger to help pry open the back panel.

Step 5



- Open the back panel to view the inside of the camera.
- Gently pull the orange ribbon cable to separate the two parts of the camera.
- ☞ Set the front part of the camera to the side.

Step 6



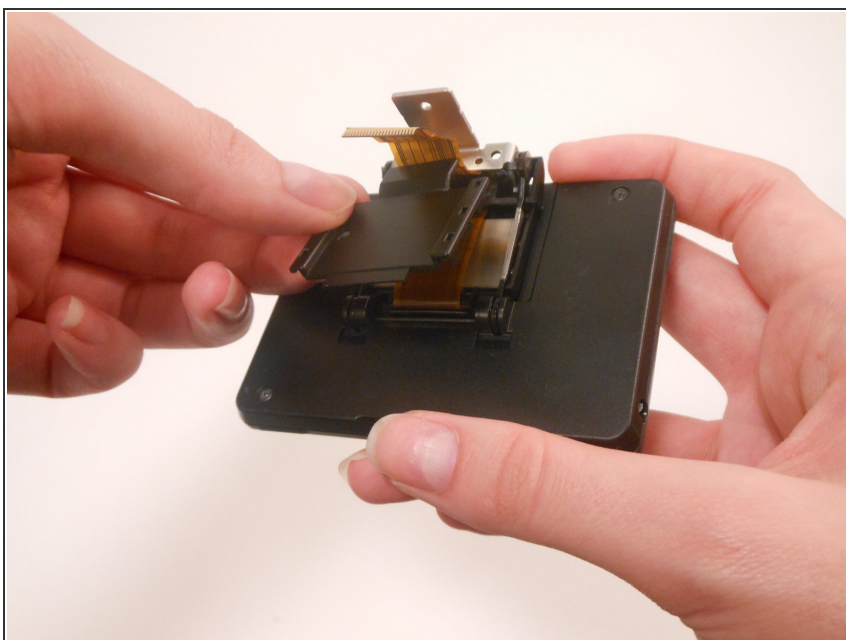
- Flip the entire back panel so that the screen is facing upwards.
- Lift the screen upwards to separate it from the back panel.
- ✦ Place the back panel off to the side. Now we will be focusing on the screen.
- Turn the screen so that the side with the screw is facing you.
- Remove the 1.59mm #00 screw with the Phillips #00 screwdriver.

Step 7



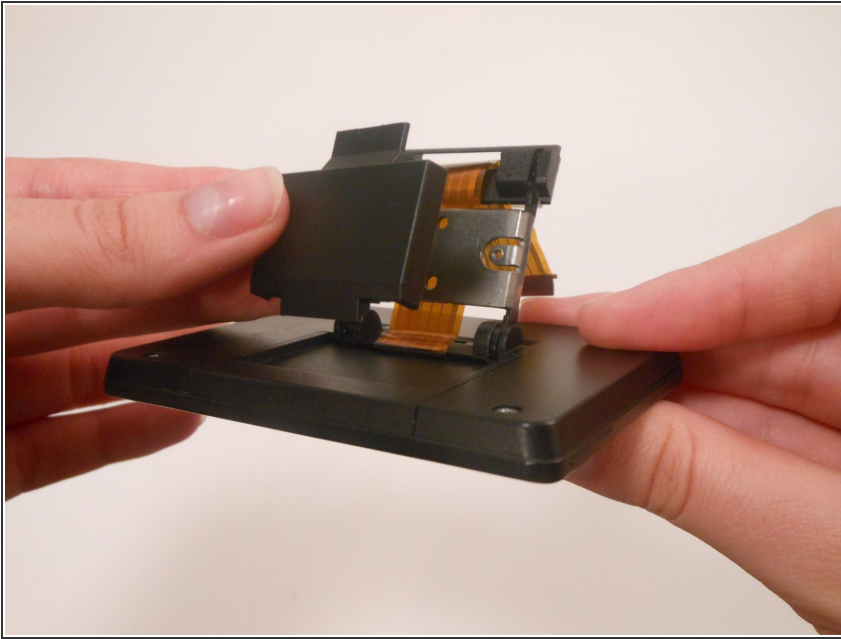
- Flip the screen over to view the backside.
- Use a Phillips #00 screwdriver to remove the 1.59mm #00 screw.

Step 8



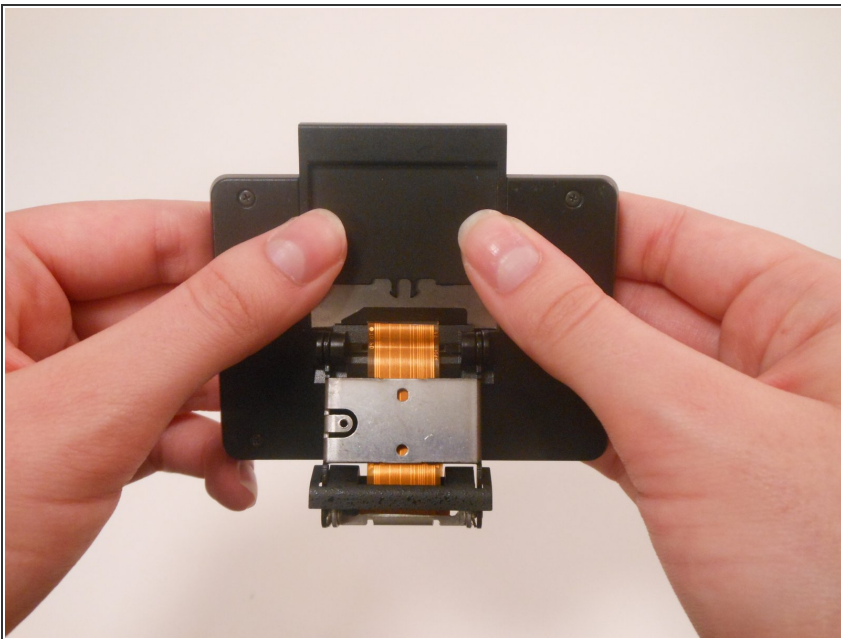
- Flip the screen so that the screen is facing downwards and the orange ribbon cable is on top.
- Lift the small, black panel to remove it from the screen.

Step 9



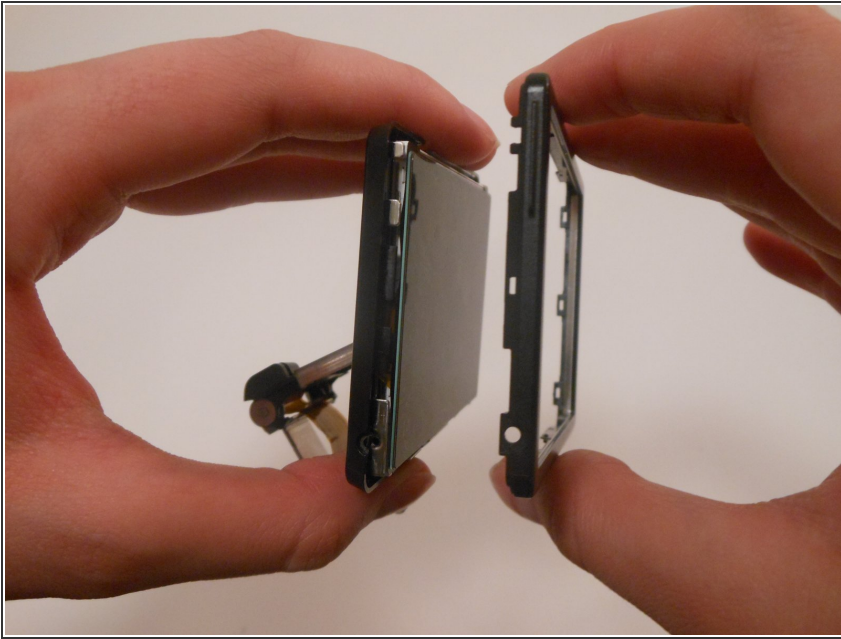
- Lift up the entire panel with the orange ribbon cable.
- ❗ Behind the orange ribbon cable is a small, black panel.
- Lift the panel upwards and remove it.

Step 10



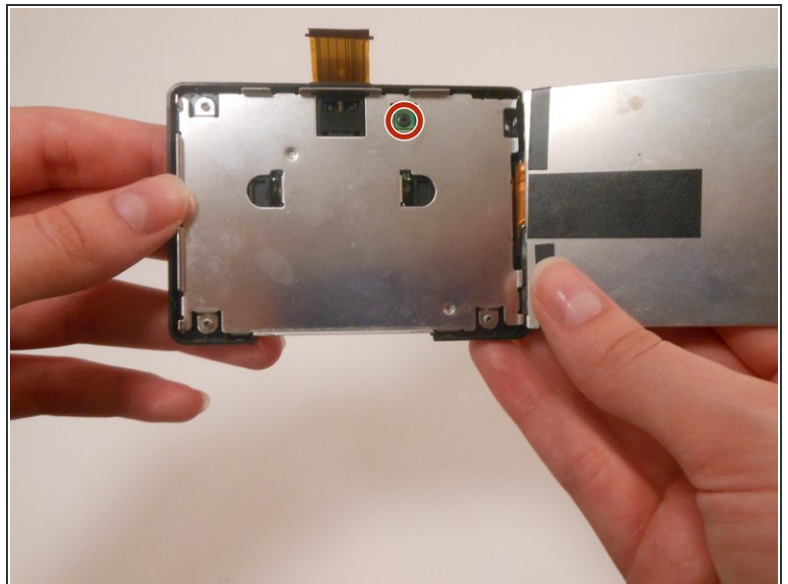
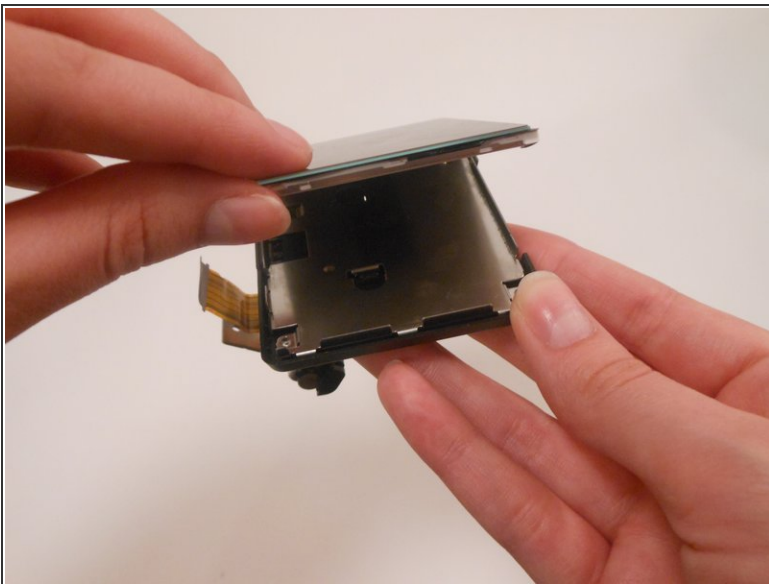
- Flip the screen so that the orange ribbon cable is facing downwards.
- Press on the sliding panel and slide it upwards to remove it.

Step 11



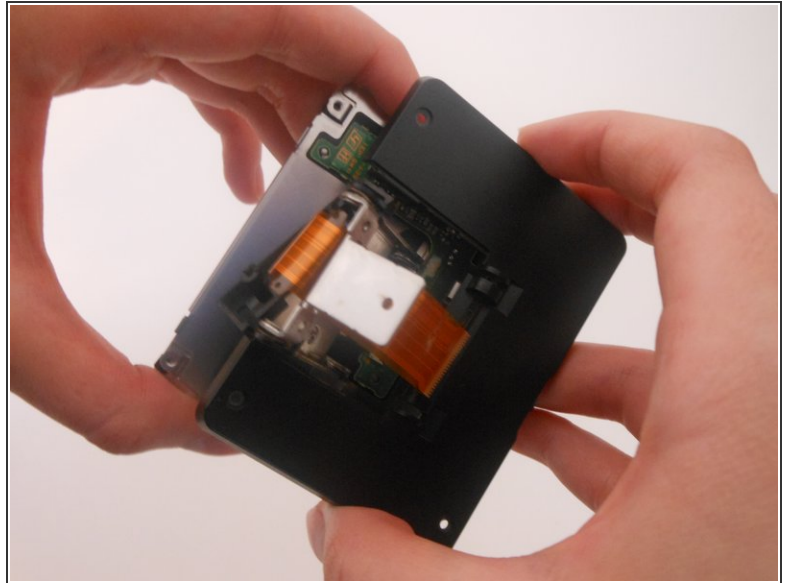
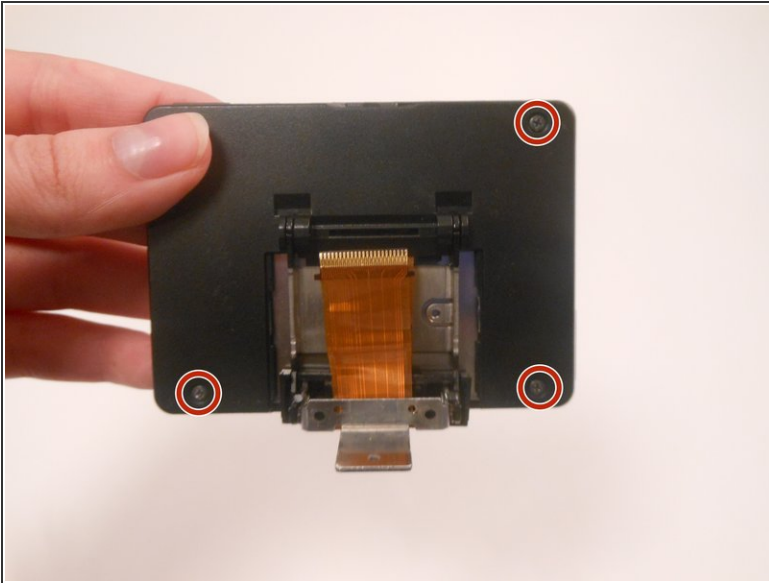
- Remove the frame from the screen.

Step 12



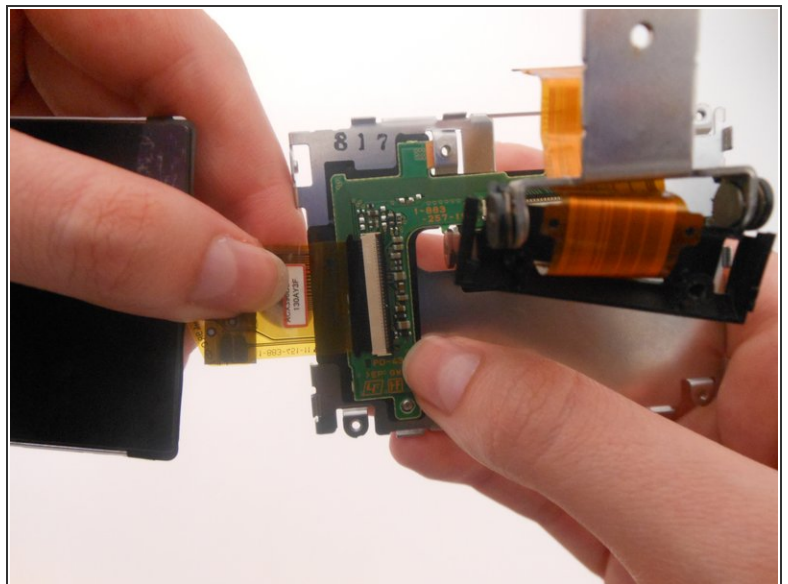
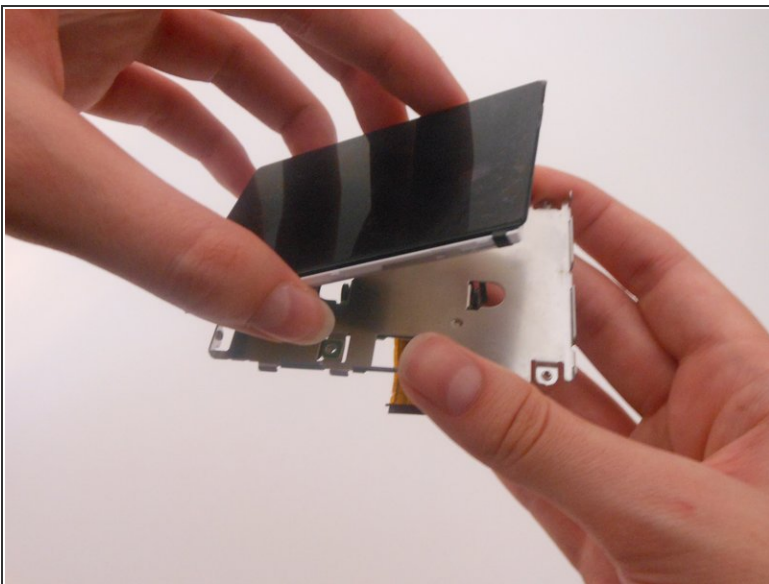
- Lift the screen upwards to view the inside.
- Use the Phillips screwdriver size #00 to remove the 1.59mm screw inside the green square.

Step 13



- Using a Phillips #00 screwdriver, remove the three 1.59mm #00 screws from the back panel.
- Lift up the black panel on the backside to remove.

Step 14



- Lift the entire screen upwards.
- Gently tug the orange ribbon cable to remove the screen from the silver panel.

To reassemble your device, follow these instructions in reverse order.