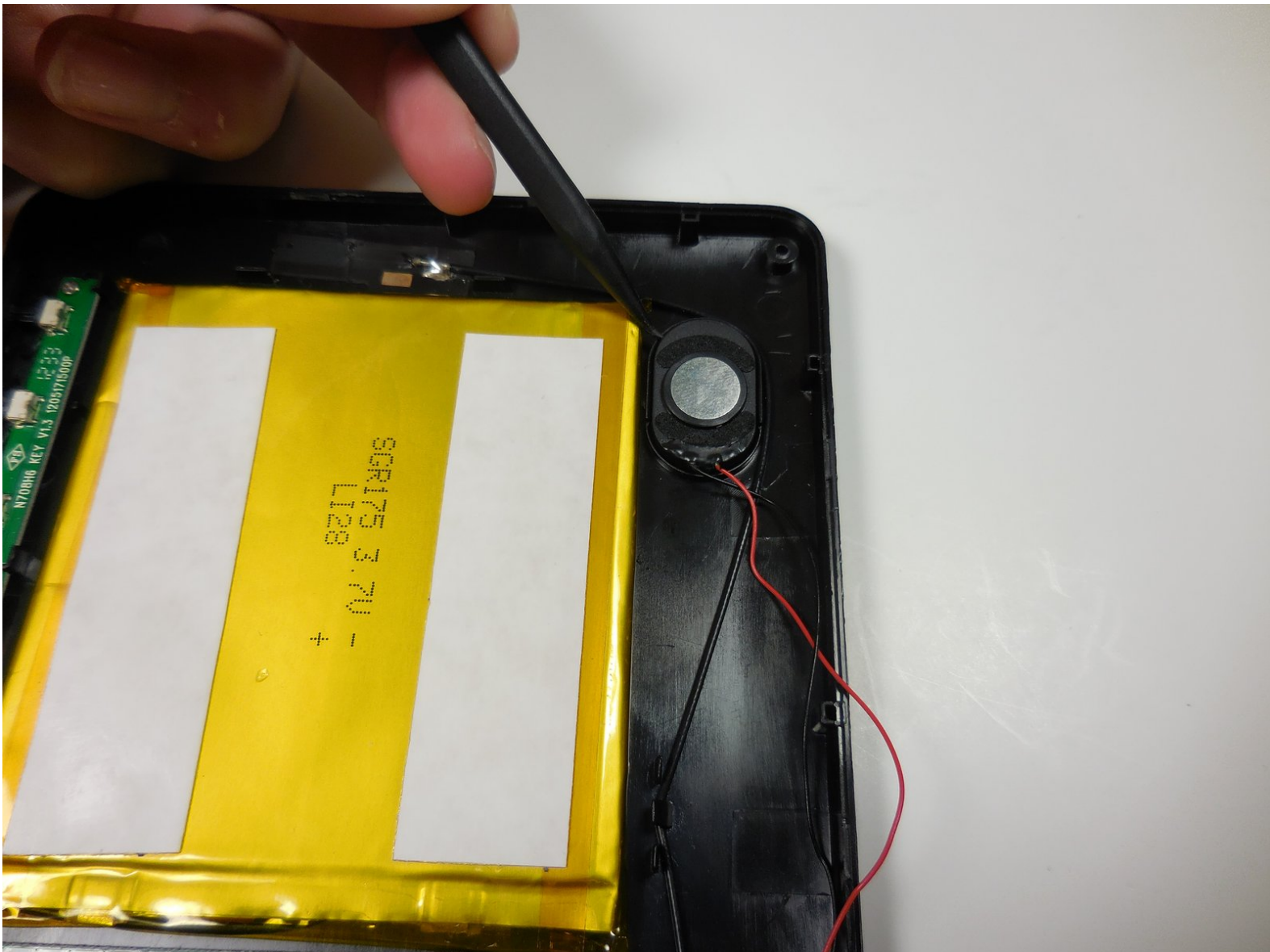




Onda V701 Speaker Replacement

This guide outlines the steps to be taken to replace the speaker.

Written By: Bradley Huber



INTRODUCTION

This guide will show you how to replace a speaker that no longer works. This is a common problem with any electronic device and is an easy fix. Just remember to turn the power off before you begin, and to be careful when using soldering tools.




TOOLS:

- [Phillips #00 Screwdriver](#) (1)
 - [iFixit Opening Tools](#) (1)
 - [Spudger](#) (1)
 - [Soldering Iron](#) (1)
-

Step 1 — Back Panel



 Ensure device is powered off before disassembly.

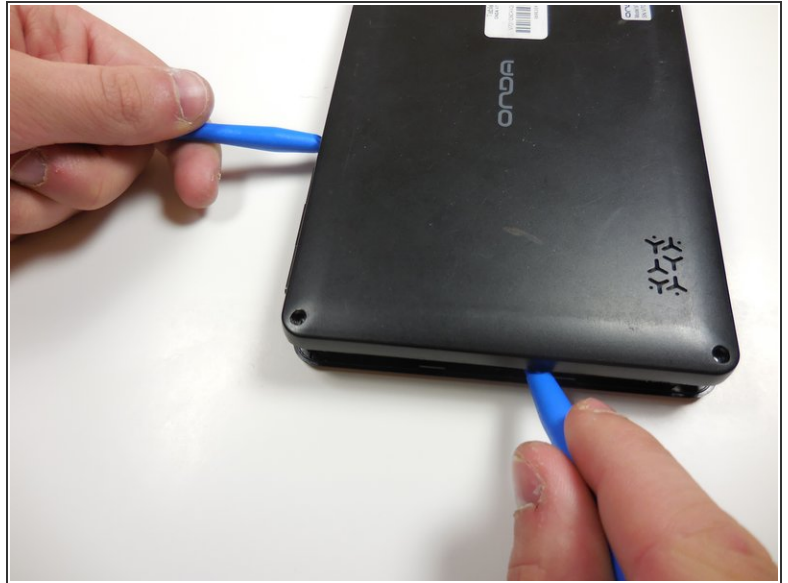
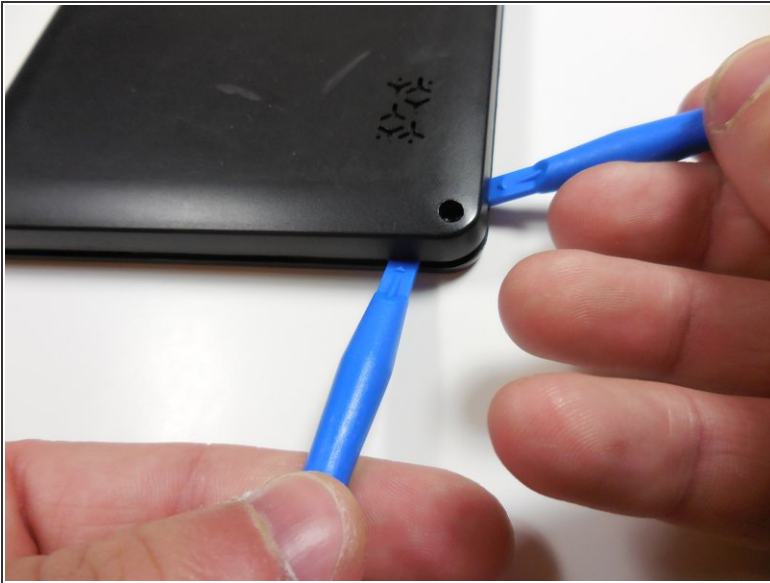
- Remove the 4 rubber screw plugs using a spudger.

Step 2



- Remove the four 4.8mm mounting screws using a PH00 screwdriver.

Step 3



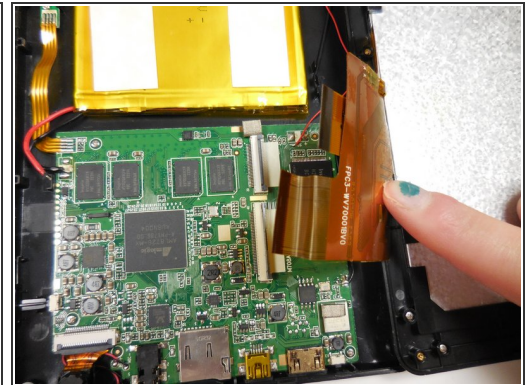
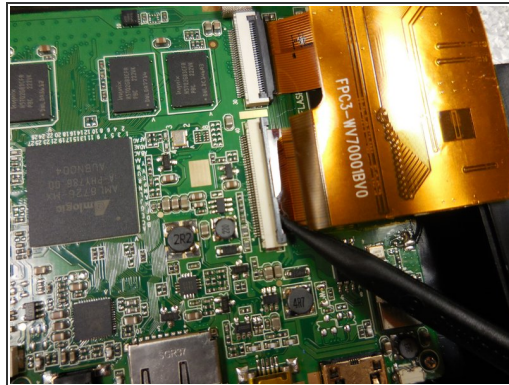
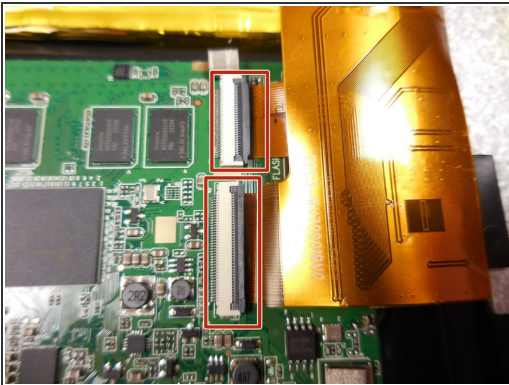
- Starting at one corner, gently pry the back panel assembly from the screen assembly using two plastic opening tools.
- Slide the opening tools around the perimeter of the device to separate the back panel assembly from the screen assembly.

Step 4



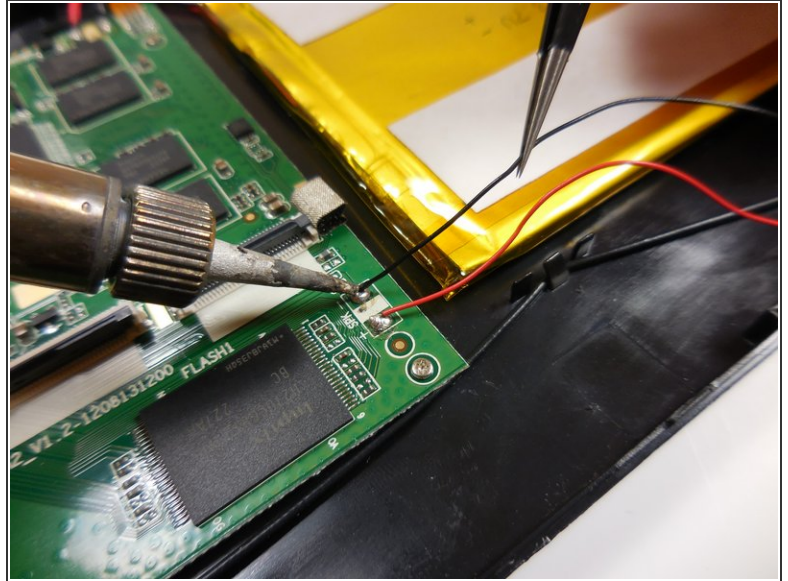
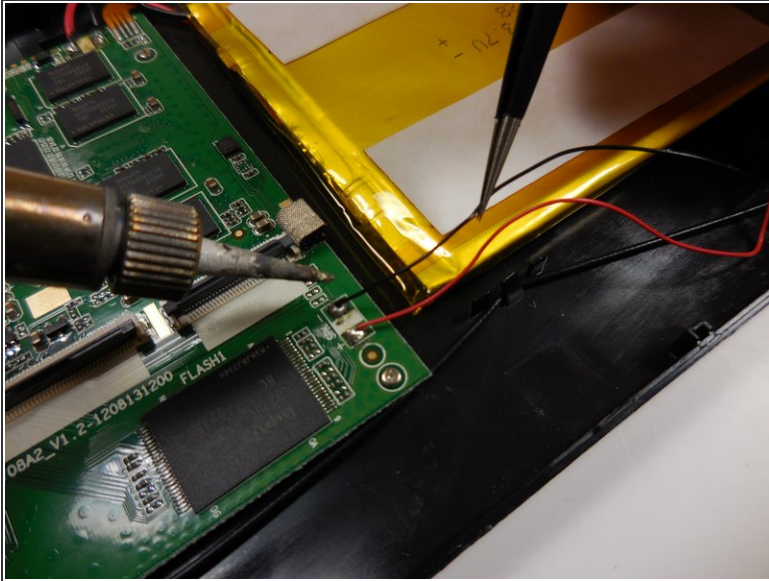
- Gently lift the screen assembly away from the back cover assembly.
- ⓘ Be careful when separating the two pieces as the screen assembly is still connected to the mother board by two ribbon cables.

Step 5




- Disconnect the two ribbon connectors by flipping the gray tabs up with a fingernail or a spudger.
- Remove the ribbon cables.

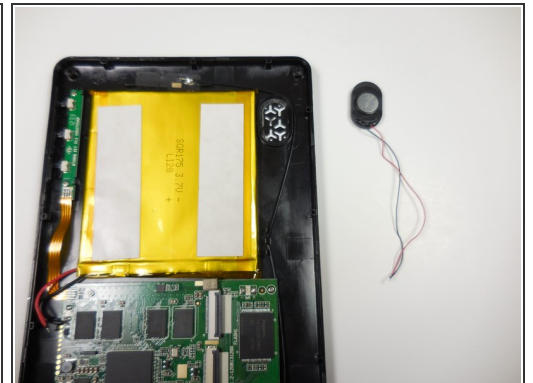
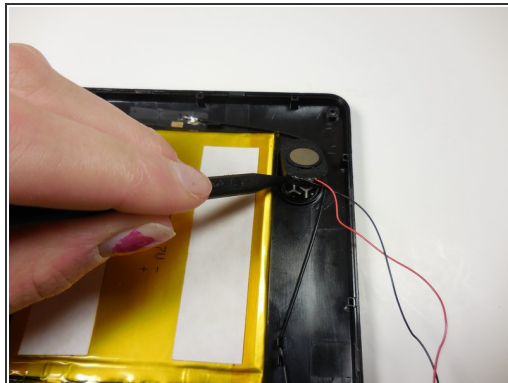
Step 6 — Speaker



- Desolder the black(-) and red(+) wires connecting the speaker to the motherboard using a soldering iron and tweezers to hold the wire.

 Soldering requires a lot of heat. Do not touch the metal part of the soldering iron. Wear gloves if necessary to protect your hands. The fumes from soldering could also be toxic. Work in a well ventilated area and/or use a respirator.

Step 7



- Carefully pry the speaker assembly off of the back panel using a spudger.

 The speaker is held on with a small amount of adhesive.

To reassemble your device, follow these instructions in reverse order.