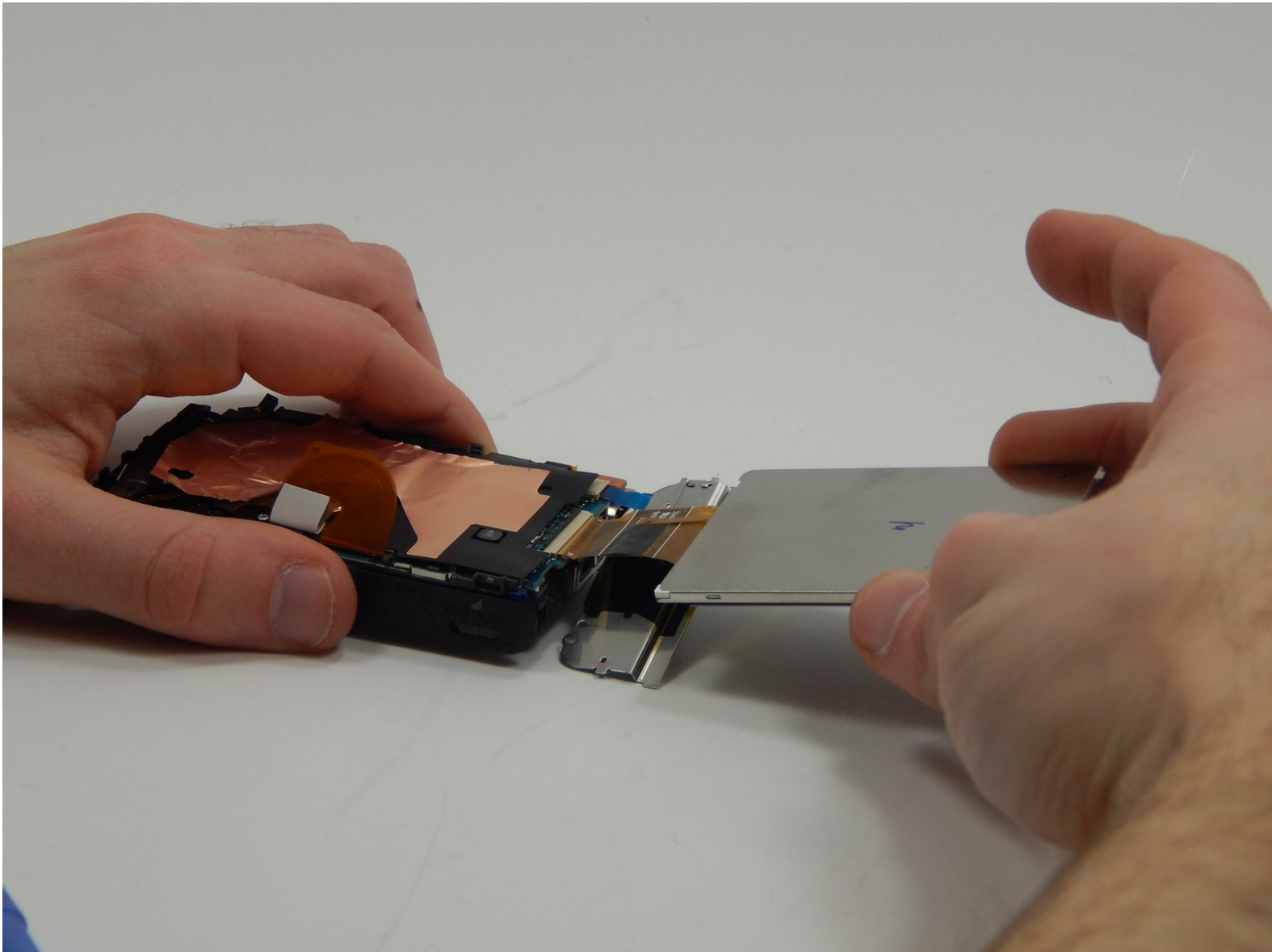




Sony Cyber-shot DSC-WX100 LCD Screen Replacement

How to disassemble the DSC-WX100 in order to replace the LCD screen.

Written By: Peter Prins



INTRODUCTION

The purpose of this guide is to replace the LCD screen. This guide will provide the necessary information to disassemble the camera, replace the screen, and to properly reassemble the components involved.



TOOLS:

- [Phillips #000 Screwdriver](#) (1)
 - [iFixit Opening Tools](#) (1)
-

Step 1 — Battery



- Open the flap indicated to allow access to the battery slot.
- ⓘ The gray switch indicated has to be moved to the right in order to release the flap.

Step 2



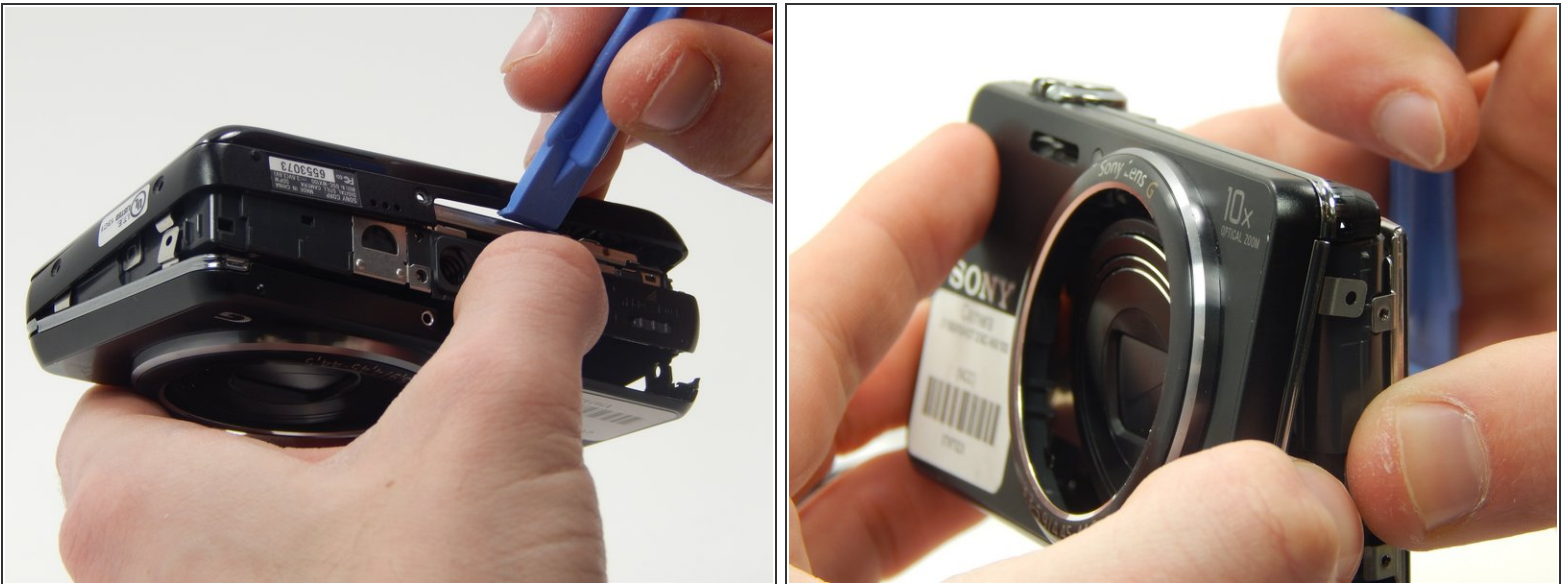
- ⓘ If the old battery is still in the slot, then make sure the camera is turned off prior to removal.
- If there is a battery currently in the slot, remove by first pulling downwards on the blue component. This will allow you to remove the battery from the slot.

Step 3 — Outer Casing



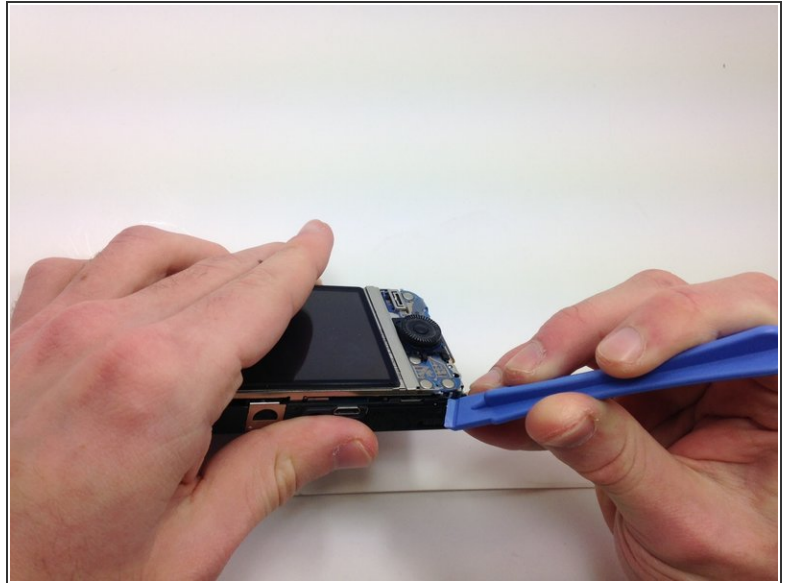
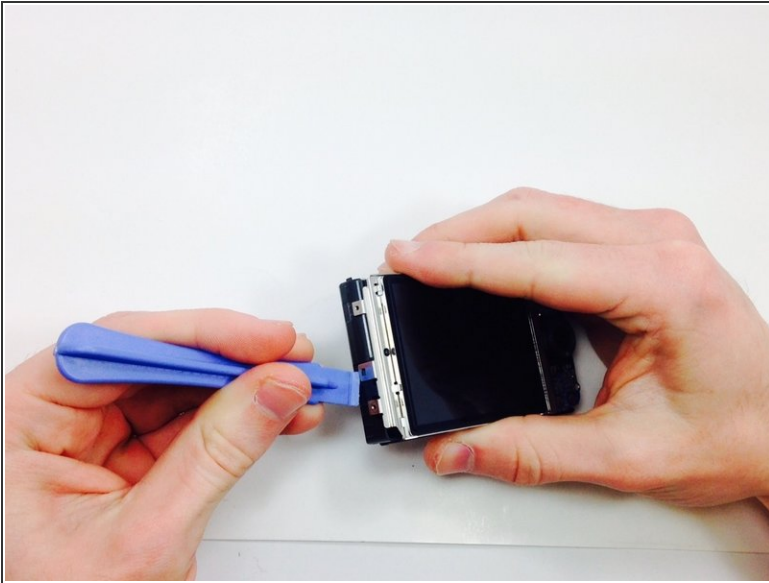
- Remove all of the 1mm screws using a Philips #000 Screwdriver.
- Remove the rest of the screws (2mm) from the camera covers using a Phillips #000 Screwdriver.

Step 4



- Use the plastic opening tool to gently remove the front and back plates of the camera.

Step 5



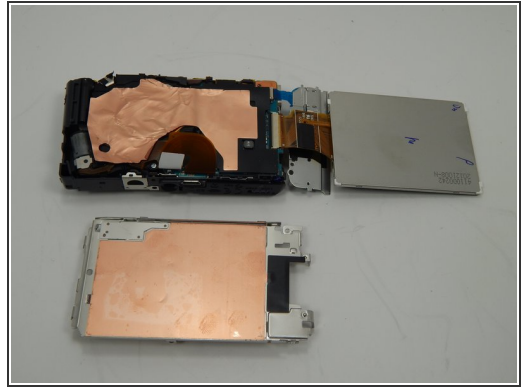
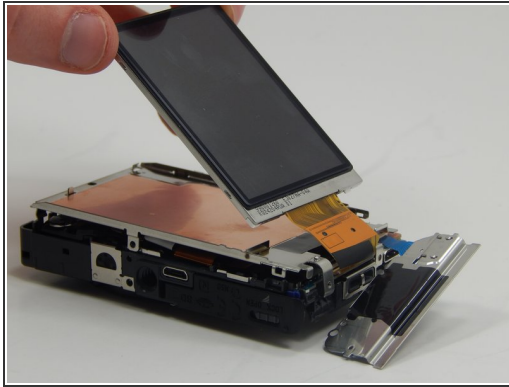
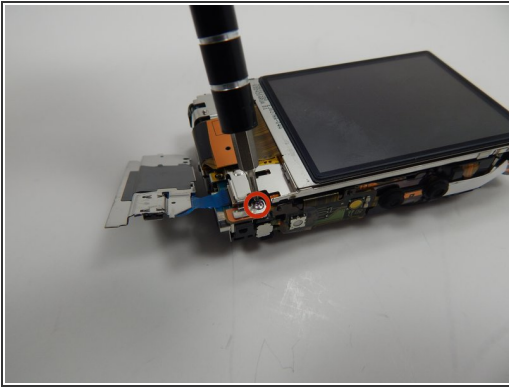
- Use a plastic opening tool to gently release the two indicated tabs.

Step 6 — LCD Screen



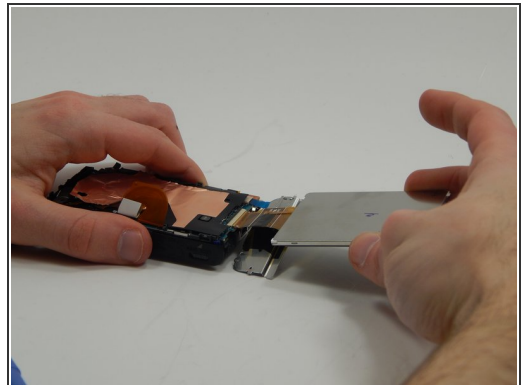
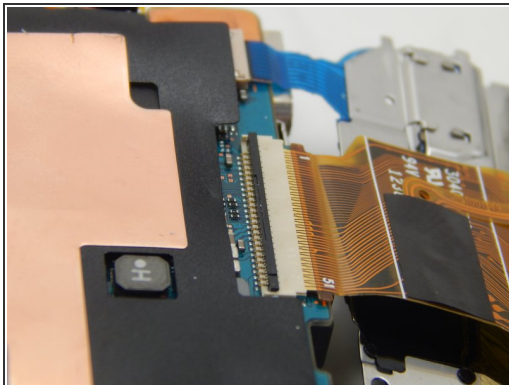
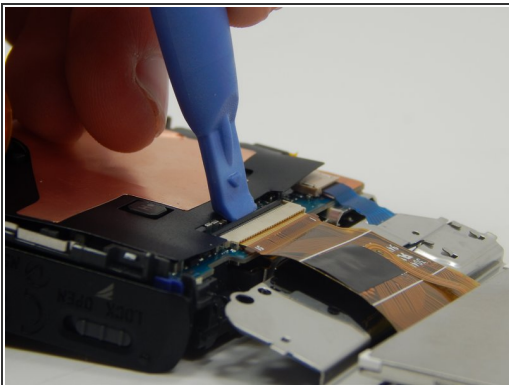
- Pull up on the lower end of the plate. Lift it so the plate is high enough so that the marked bump is not holding it in place.
 - Pull away from the camera at the end of the metal plate with the blue circuits to then remove the plate from the rest of the camera.
- ⓘ For help please watch the video.

Step 7



- Remove this screw (1mm) with a Phillips #000 Screwdriver.
- Gently lift the LCD from the metal plate.
- Remove the metal plate that was underneath the LCD screen from the camera.

Step 8



- Use the plastic opening tool to pry the black bar upwards.
- Pull the LCD screen from out of the slot.

To reassemble your device, follow these instructions in reverse order.