



Canon PowerShot G12 LCD Screen Replacement

Replace the Canon PowerShot G12 LCD screen.

Written By: Nathan Meuwissen



INTRODUCTION

Replacing the LCD screen is a highly-invasive, step-intensive process that becomes necessary if the screen has sustained damage to due a crack, water, or an otherwise internal malfunction.

In this guide, you will learn how to replace the LCD screen carefully.



TOOLS:

- [Phillips #00 Screwdriver](#) (1)
- [Precision Tweezers Set](#) (1)
- [Spudger](#) (1)



PARTS:

- [Canon PowerShot G12 LCD Screen](#) (1)

Step 1 — LCD Screen



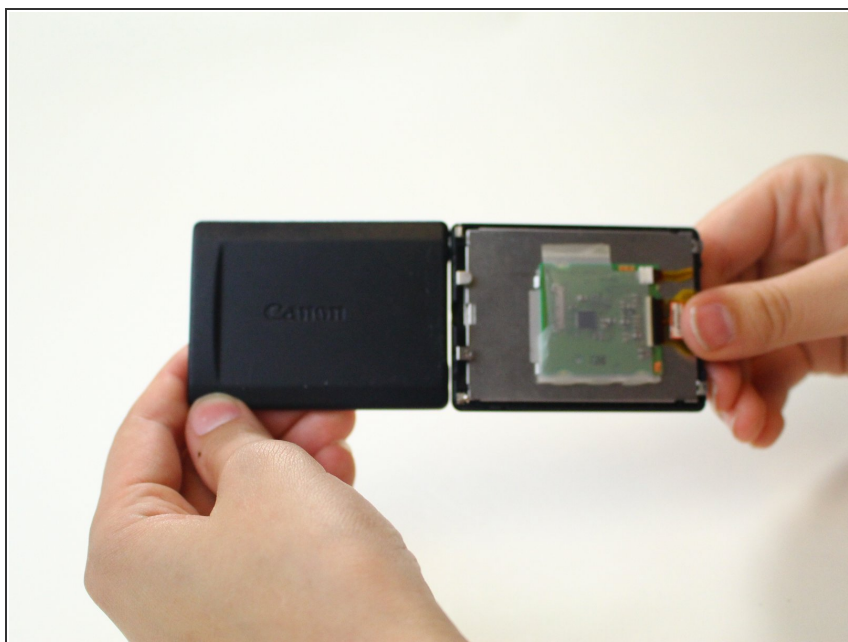
- Open the LCD screen from its locked position so the screen is visible.

Step 2



- Flip the LCD screen perpendicular to the camera exposing the side screws.
- Using a Phillips-head 00 screwdriver, unscrew the screws on both sides of the LCD screen.

Step 3



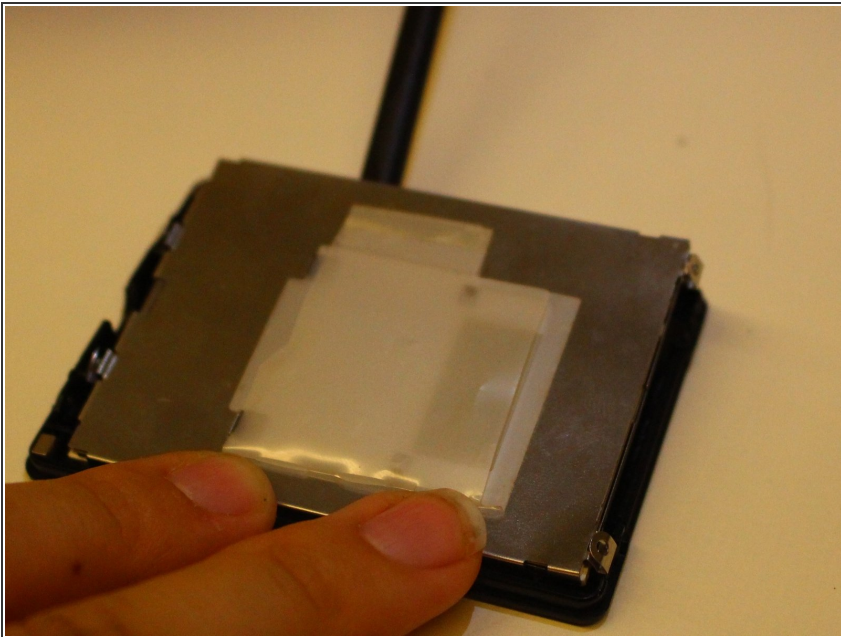
- Remove the front plate which states the Canon brand by prying open the side farthest from the camera simply with your fingers.
- ⓘ The circuit and internal wires will be exposed.

Step 4



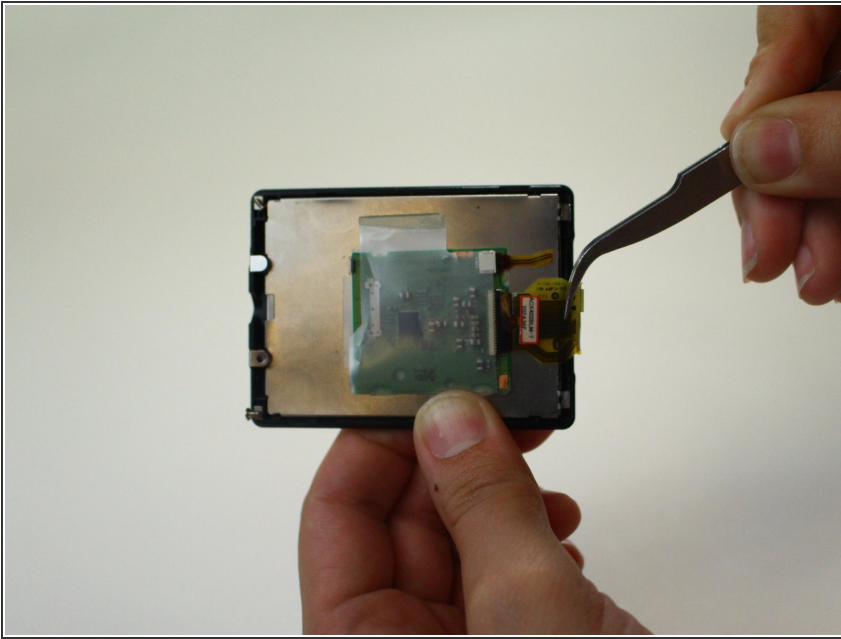
- Flip the LCD screen vertically and remove the final screws on the outer edge of the screen with the same Phillips-head 00 screwdriver. All screws have Loctite (blue) on them so they are difficult to turn. Make sure your Phillips screw driver fits perfectly. Sometimes a new screwdriver will need to have the tip filed down a little to fit.
- ⓘ The internal mechanisms will become loose and be able to be taken out.

Step 5



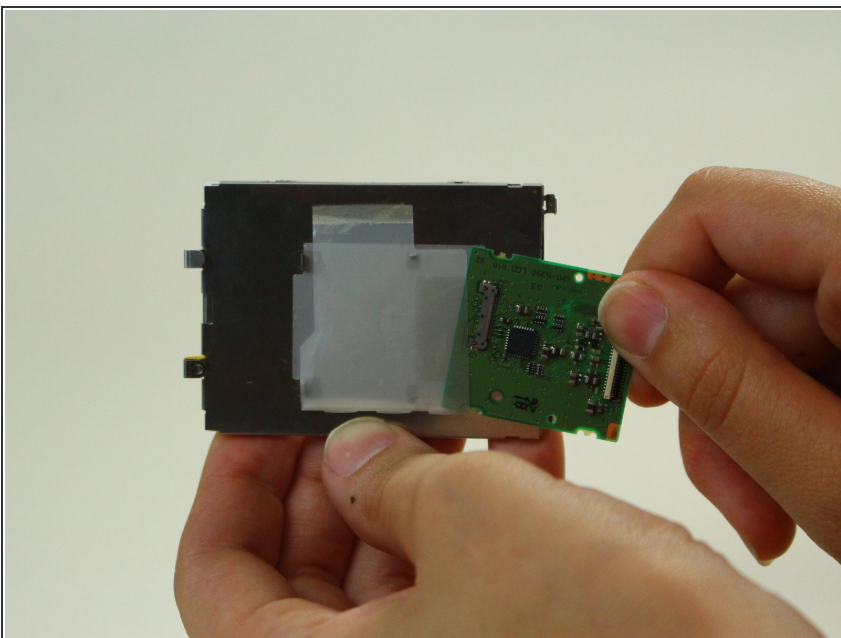
- Using a spudger, remove the external shell of the LCD screen leaving only the metal internal circuit board and screen attached.

Step 6



- Using a pair of precision tweezers, carefully remove the yellow circuit connector from the port on the green circuit board.
- Pull the yellow circuit connector down removing the screen from the metal shell.

Step 7



- Place the new LCD screen into the metal shell with the yellow connector tab facing outward.
- Connect the new screen with the green circuit board ensuring you use the tweezers to connect it fully into the port.

To reassemble your device, follow these instructions in reverse order.