



Ematic Genesis Button Replacement

This guide will help a user to safely access...

Written By: Justin Rohrman



INTRODUCTION

This guide will help a user to safely access the buttons and their electrical components inside the Ematic Genesis tablet. This will allow access to the microphone, the volume button, the power button, the sync button and charger port.

TOOLS:

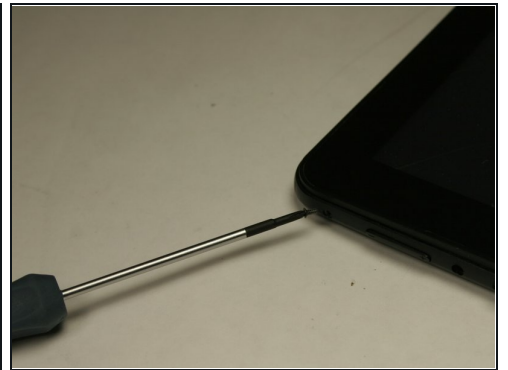
[Phillips #00 Screwdriver](#) (1)

[Plastic Cards](#) (1)

[iFixit Opening Tool](#) (1)

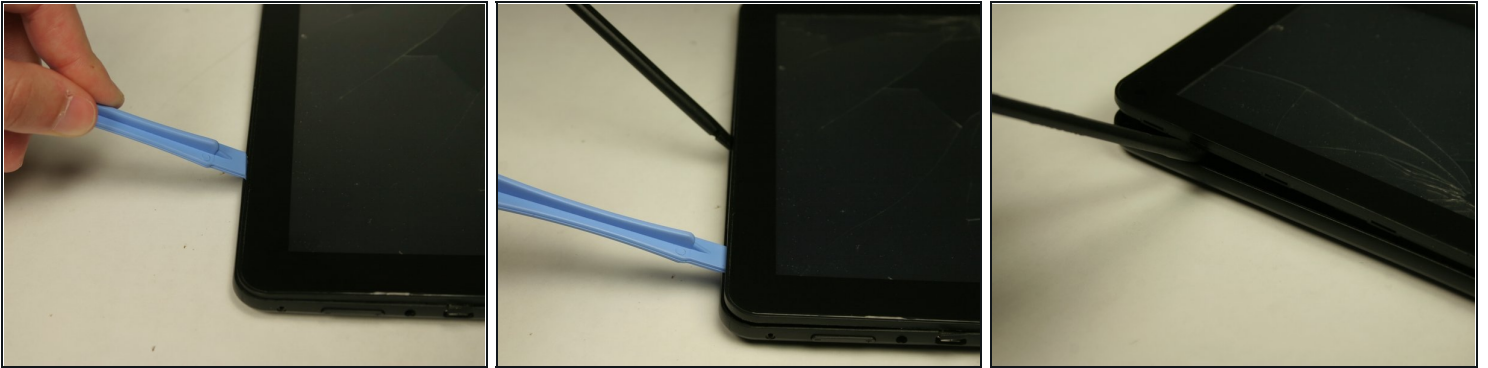
[Spudger](#) (1)

Step 1 — Ematic Genesis Casing



- Unscrew the two (2) 1.3mm Phillips #00 screws found on the bottom edge of the tablet, where the power and volume buttons are located.

Step 2



- Insert plastic opening tool into the edge between the screen plate and the back plate to create a separation between the casings.
- Insert the flat end of the spudger next to the plastic opening tool and carefully pry the edges apart. Continue this all around the edges until the casings separate.
- ⓘ There may be cracking sounds when prying them apart. If carefully done, this is only the locks coming apart and is not harmful.

⚠ Be careful when separating the two plates as they are connected by the speaker wires and could be disconnected during this process.

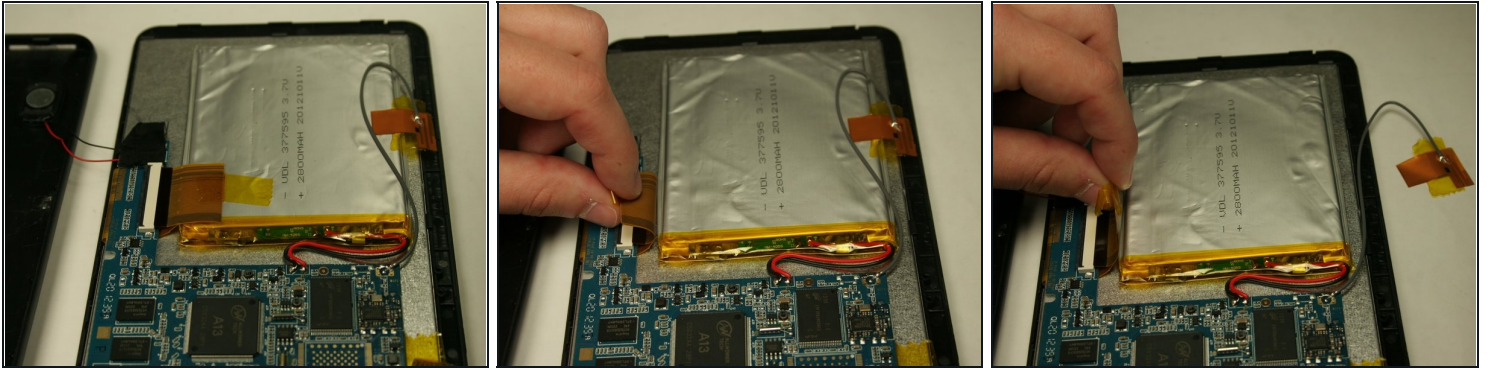
Step 3



- Remove back plate from screen plate and lay both down flat next to each other.

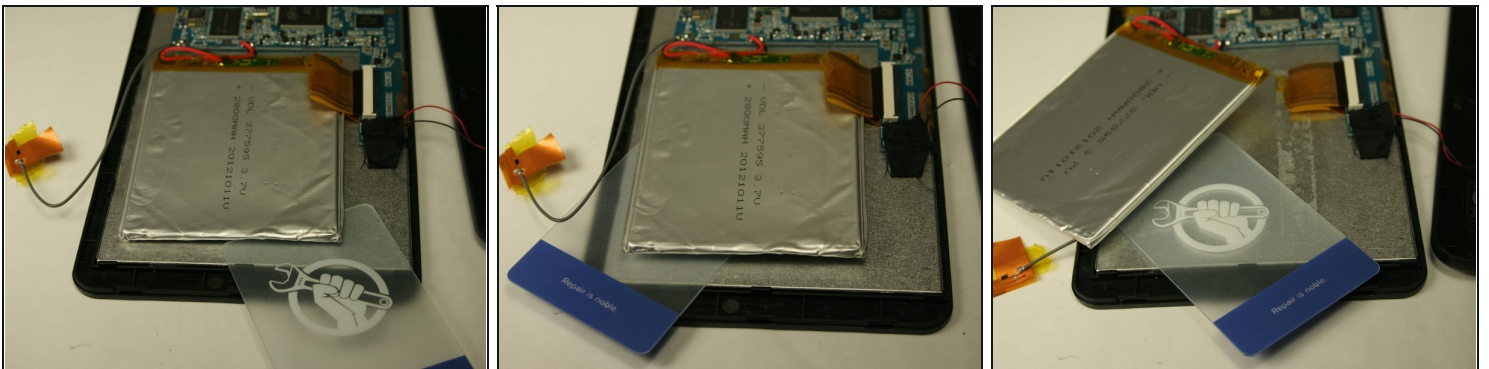
⚠ Be careful when separating the two plates as they are connected by the speaker wires and could be disconnected during this process.

Step 4 — Battery



- Lift up the two pieces of tape holding the copper plate and the connector ribbon to the battery. Gently hold or place away from the battery.

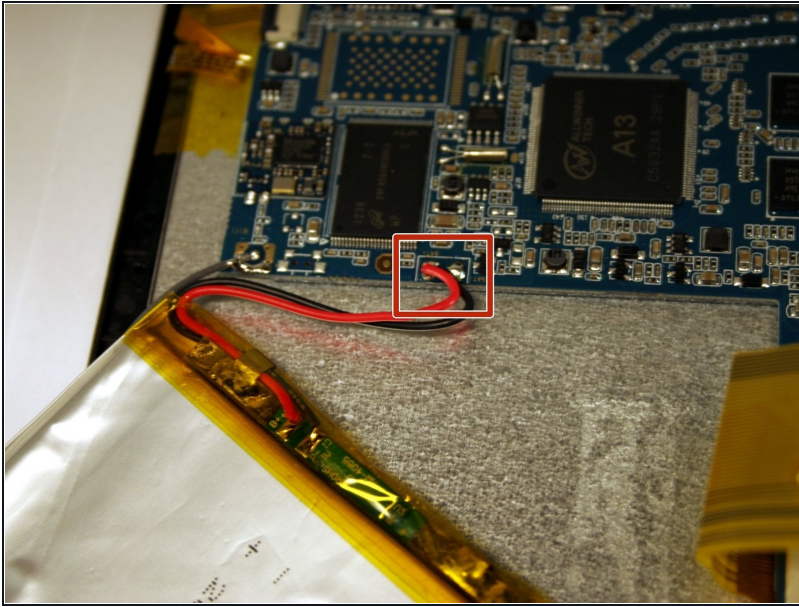
Step 5



- Using a [plastic card](#), gently break the adhesive that holds the battery to the metal screen plate.

⚠ The battery is very bendable. Although it may not be working, there are still dangerous contents inside batteries.

Step 6



- If replacing the battery, disconnect the wires that connect the battery to the motherboard.
- If not replacing the battery, do NOT disconnect the wires.
- ⓘ To reconnect the new battery, a soldering kit will be necessary. Use the iFixit soldering guide to gain further information on how to complete this step.
- [How To Solder and Desolder Connections](#)

Step 7 — Camera



- Once the panels are separated, remove the tape holding down the ribbon connector that is connecting the camera to the motherboard.

Step 8



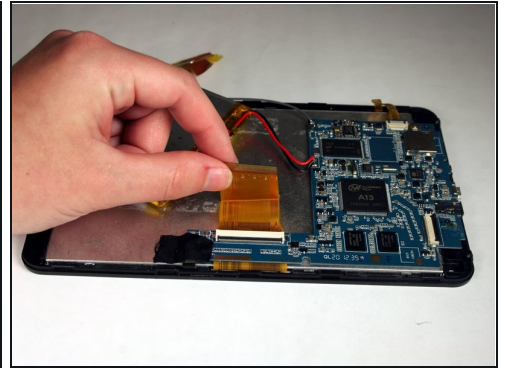
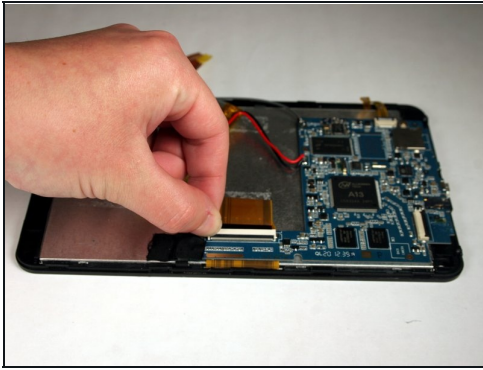
- Lift up the black lever of the connector that holds the camera ribbon in place.

Step 9



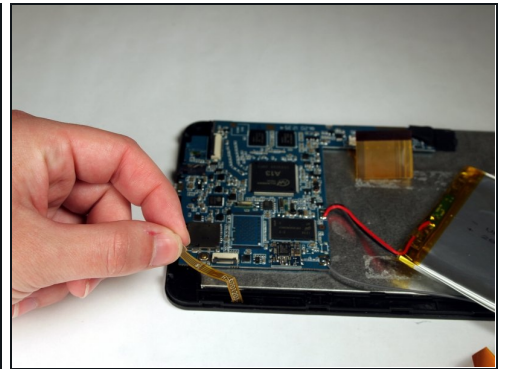
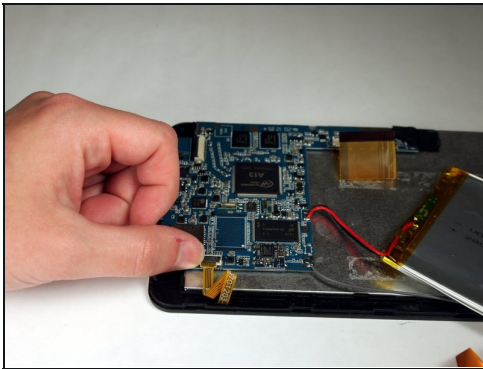
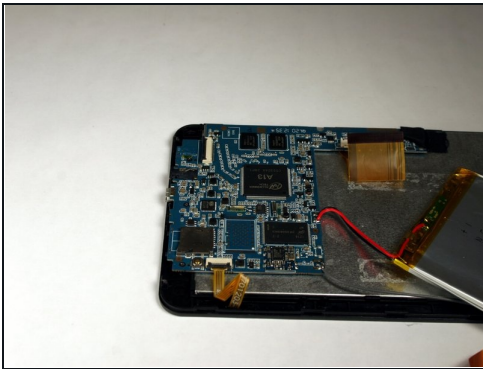
- Gently pull the ribbon out of the connector and lift the camera out of the casing.
- ⓘ There is adhesive holding the camera in the case. Pull up strong enough to separate the camera from the casing without damaging the components.

Step 10 — Button



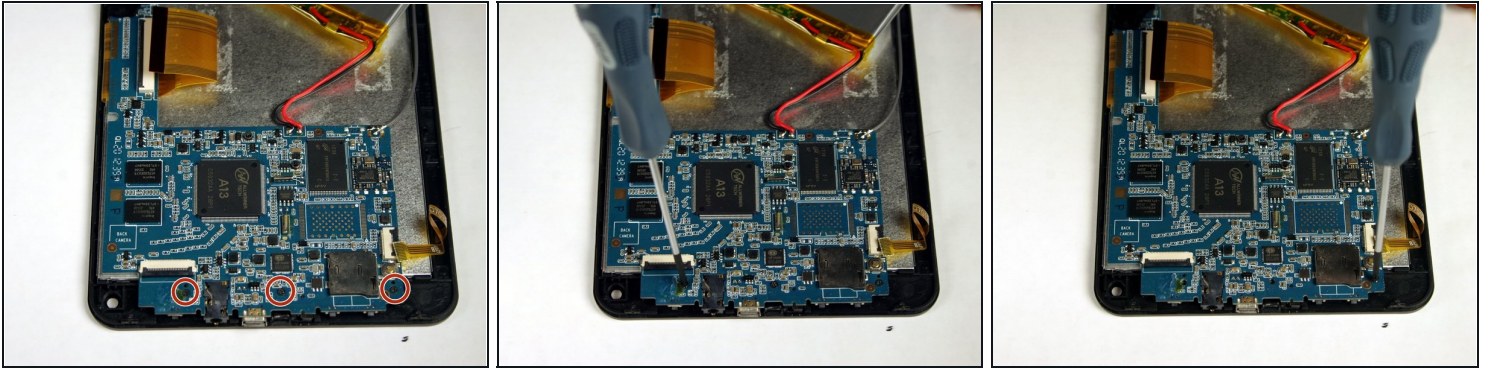
- Once battery is removed, flip up the black lever of the connector that is holding the wide ribbon in place for the screen. Remove the ribbon from the connector.

Step 11



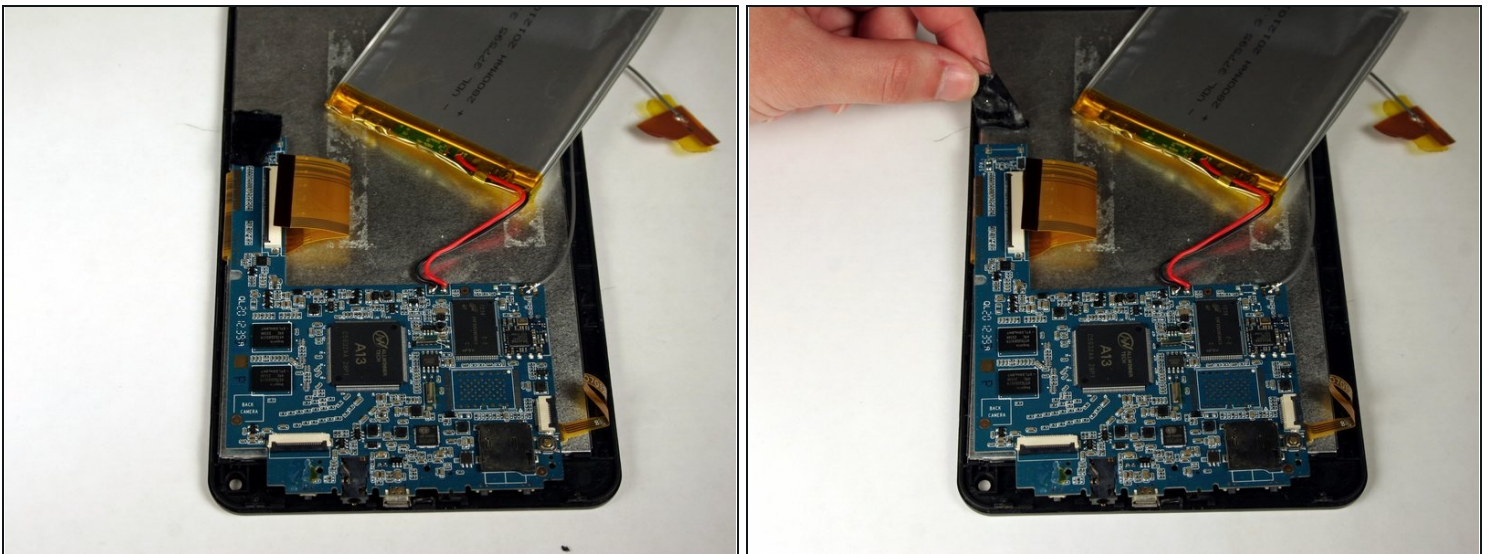
- Rotate the tablet 180 degrees and flip up the black lever of the connector holding the small, yellow ribbon. Remove ribbon from the connector.

Step 12



- Rotate the tablet 90 degrees and remove the three (3) 1.3 mm Phillips #00 screws that hold the motherboard in place.

Step 13

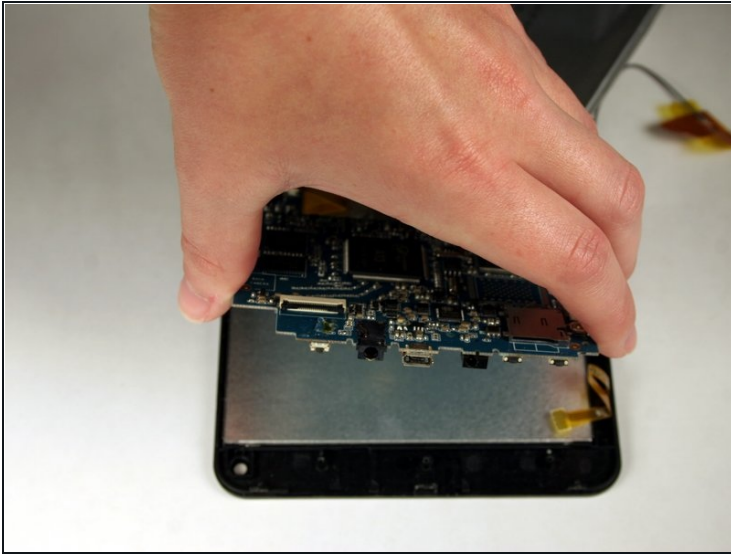


- Lift up the tape that covers the speaker wires and holds the motherboard in place.

ⓘ This picture does not show speaker wires attached. These do NOT have to be disconnected for this.

⚠ Be careful not to disconnect the speaker wires from the motherboard. Otherwise, they will need to be soldered back on.

Step 14



- With the motherboard detached from the screen plate, there is now access to the electrical components under the motherboard and the mechanical button components on the back plate.

To reassemble your device, follow these instructions in reverse order.