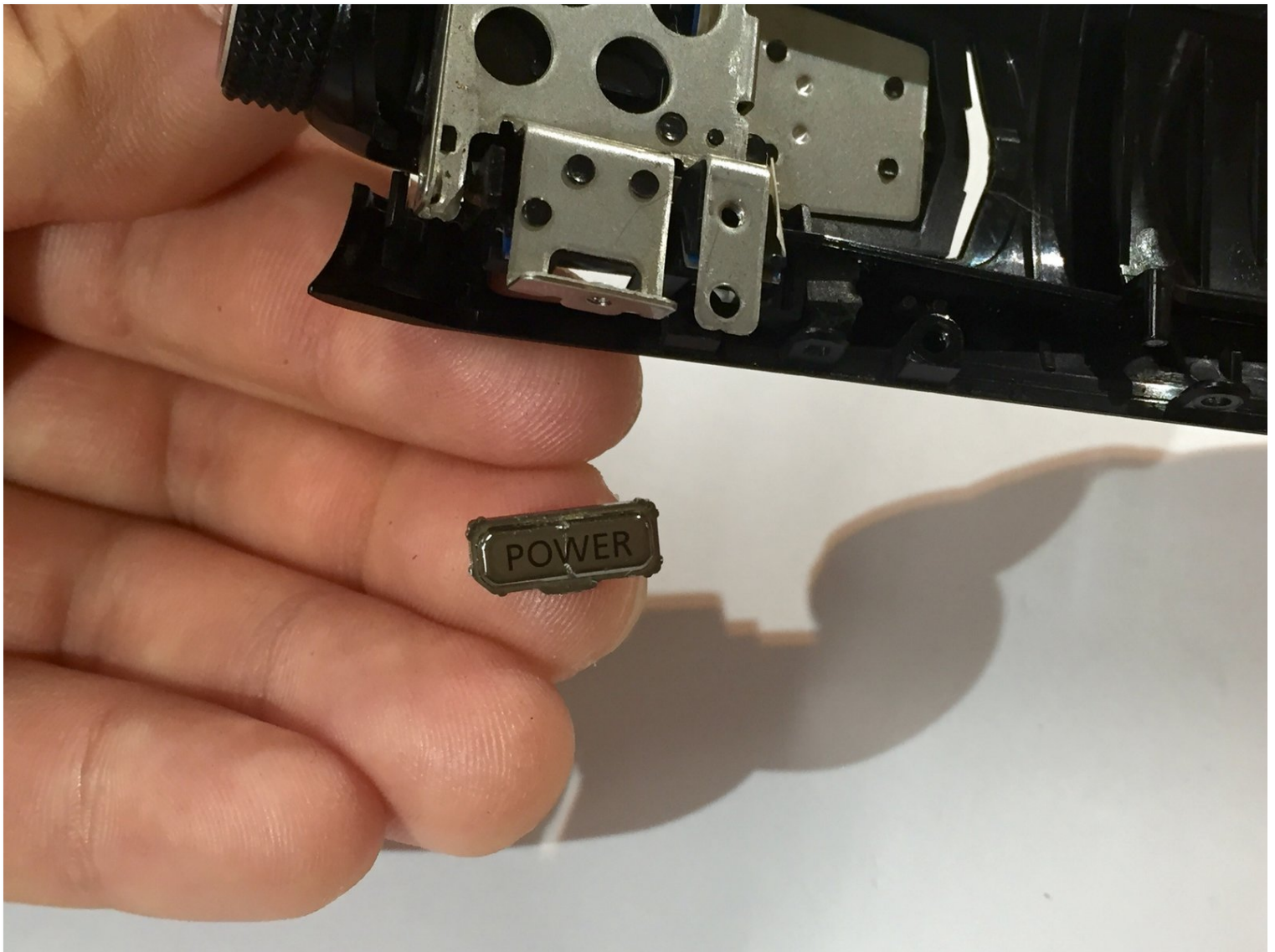




Canon Vixia HF S10 Camcorder Power Button Replacement

If your power button is jammed or isn't working...

Written By: Olivia



INTRODUCTION

If your power button is jammed or isn't working properly, this guide will simply demonstrate on how to replace the power button in a Canon Vixia HF S10. For additional information about the Canon Vixia HF S10 take a look at the [official Canon site](#).

Before beginning this repair, be sure to power off the camera and remove the battery.

TOOLS:

- Tournevis cruciforme #00 (1)
- Tapis de projet magnétique (1)
- Spudger (spatule antistatique) (1)
- Outil pour ouvrir iFixit (1)
- Slip Joint Pliers (1)

Step 1 — Power Button



- Turn the camcorder upside down.
- Remove the three 3x4 mm Phillips screws securing from the black plastic case.

Step 2



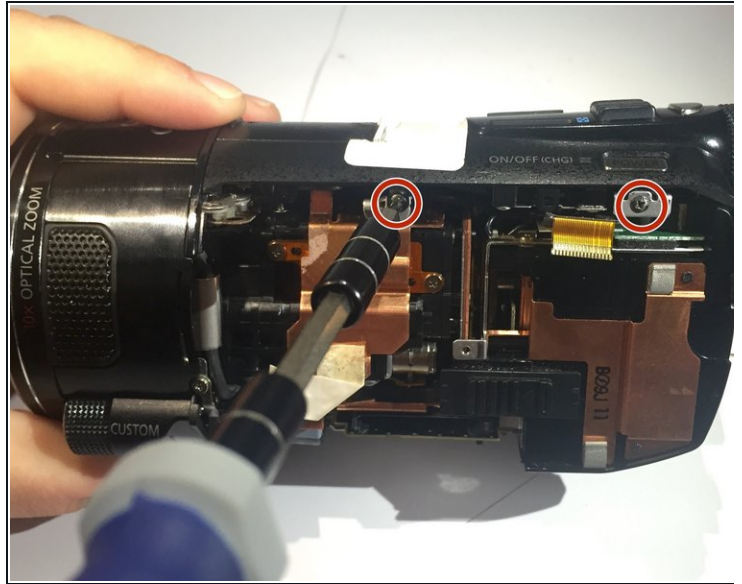
- Open the LCD screen.
- Remove the three 3x4 mm Phillips screws that hold the black panel plastic case together.
- Remove the two 2x2.5 mm Phillips screws and the 3x4 mm Phillips screw from the inner corner between the panel and the LCD screen.

Step 3



- Remove the black plastic covering with your fingers.
- ① Underneath the covering, you will find a screw hinge.
- Remove the 2x2.25 mm Phillips screw located at the top of the screw hinge.

Step 4



- Using your fingers, remove the panel from the base of the camcorder.
- Remove the two 1x2.5 mm Phillips screws.

Step 5



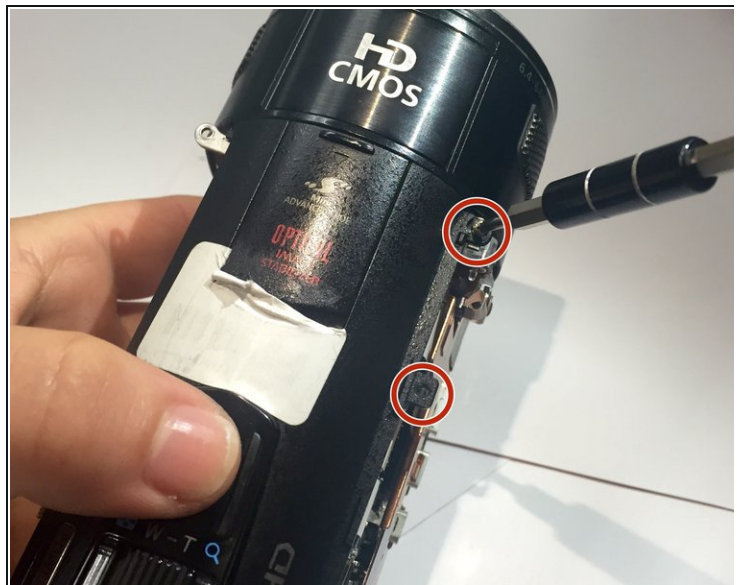
- Turn the camcorder upside down.
- Remove the four 2x2.25 mm Phillips screws.

Step 6



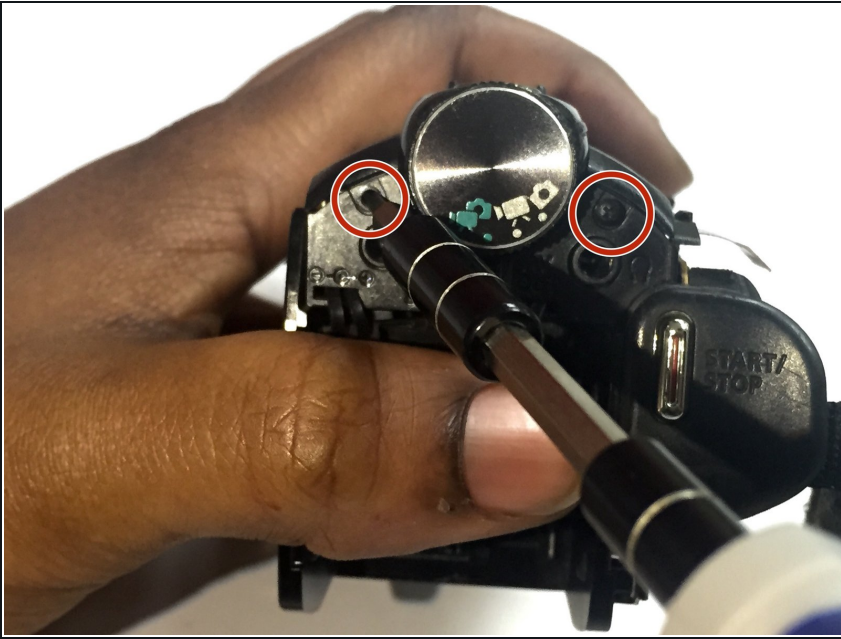
- Turn the camcorder to the side and remove the strap.
- Remove the two 1x2.5 mm Phillips screws.

Step 7



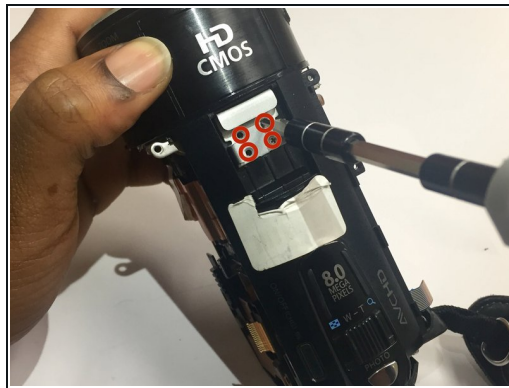
- Using a plastic opening tool, pry off the side panel from the base of the camcorder.
- Remove the two 2x2.5mm Phillips screws located at the top

Step 8



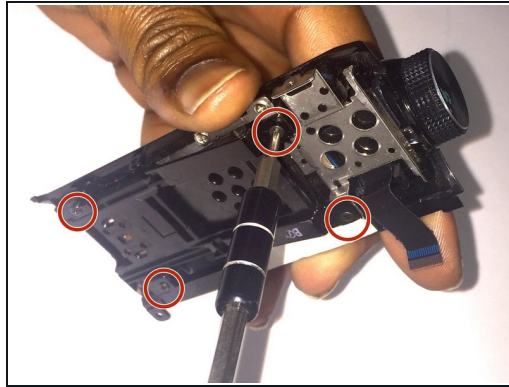
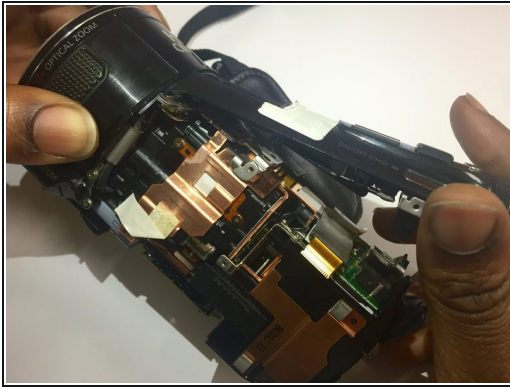
- Remove the two 3x4 mm Phillips screws beneath the two covers (AV & DCIN).

Step 9



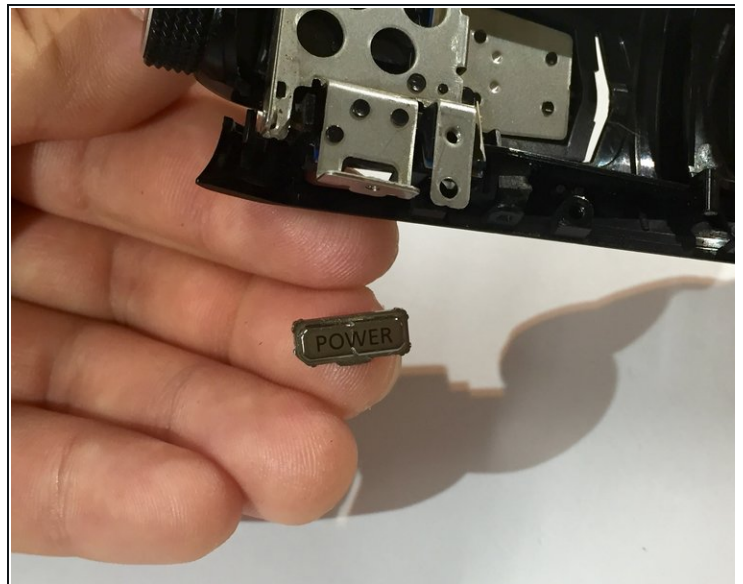
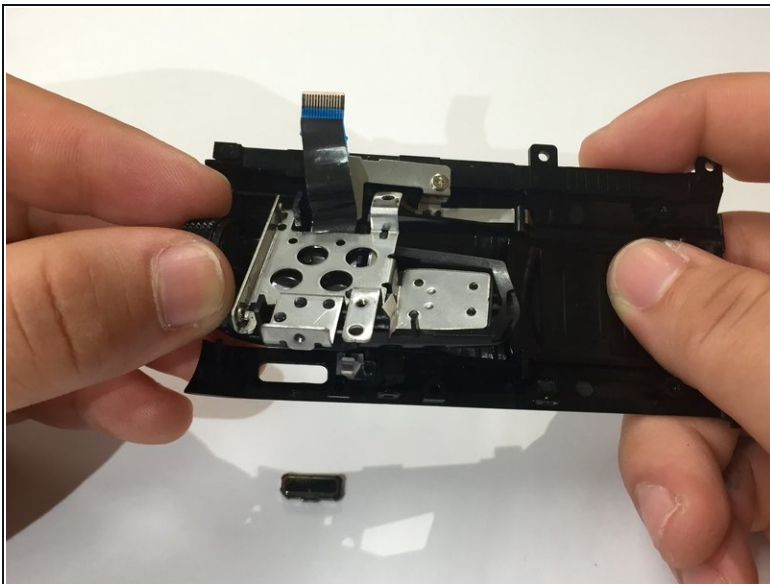
- Slide open the "Optical Image Stabilizer" cover located at the top of the camcorder.
- Remove the four 3x2.5 mm Phillips screws.
- Using your fingers, remove the metal casing.

Step 10



- Using your fingers pop off the top cover of the camcorder.
- Remove the three 3x4 mm Phillips screws and one 2x2.5 mm Phillips screw located beneath the top cover.
- Remove the two 3x2.5 mm Phillips screws from the metal casing located underneath the top cover.

Step 11



- Using your fingers, slightly move the metal casing.
- Remove the power button.

To reassemble your device, follow these instructions in reverse order.