



# Samsung TL220 Power Button Replacement

We will take apart the Samsung camera to get to the power button to replace it. Pictures will display our steps in progress with outlines of the break down procedure.

Written By: chelsea



# INTRODUCTION

All you need for this guide is the will to fix your camera. Enjoy!



## TOOLS:

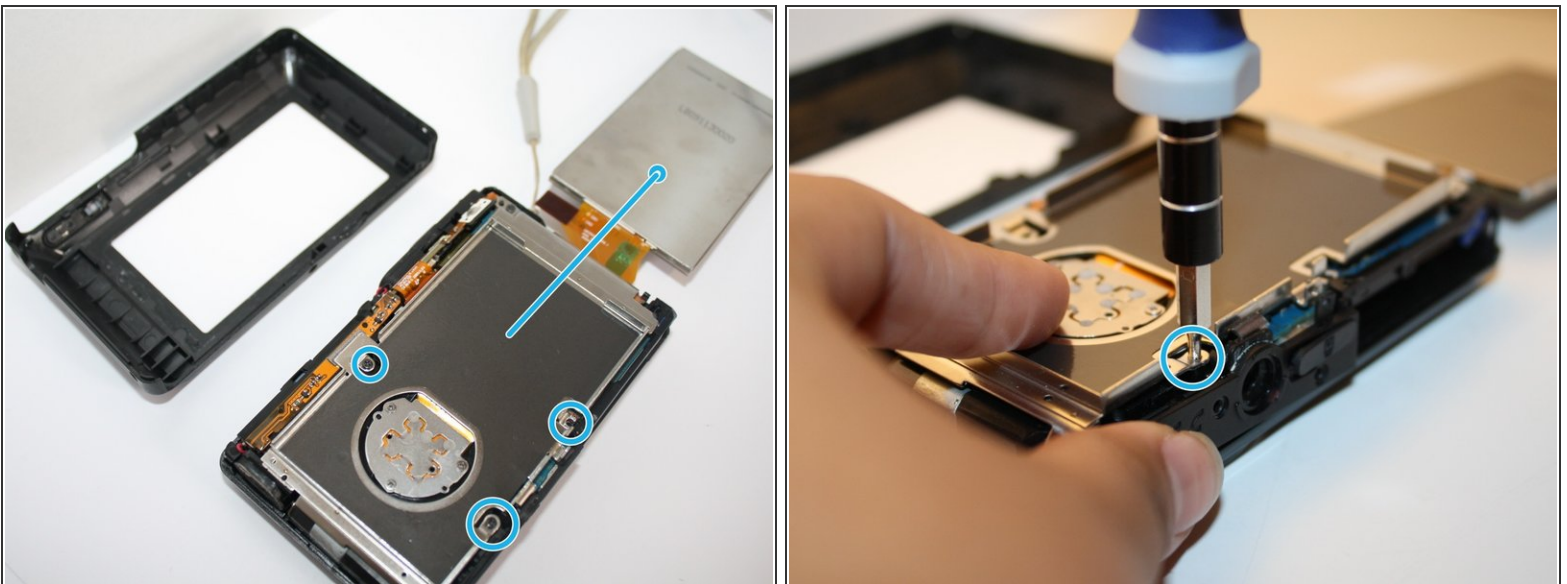
- [Screwdriver](#) (1)
  - [Flathead Screwdriver](#) (1)
  - [Tweezers](#) (1)
-

## Step 1 — Power Button



- Check for debris and dust around the power button to make sure it's clean.
- If dust is absent, then begin with unscrewing the seven outside shell 4 mm Philips screws with the Philips screw driver.
- Now carefully pry open the back casing with the ifixit plastic opening tool.

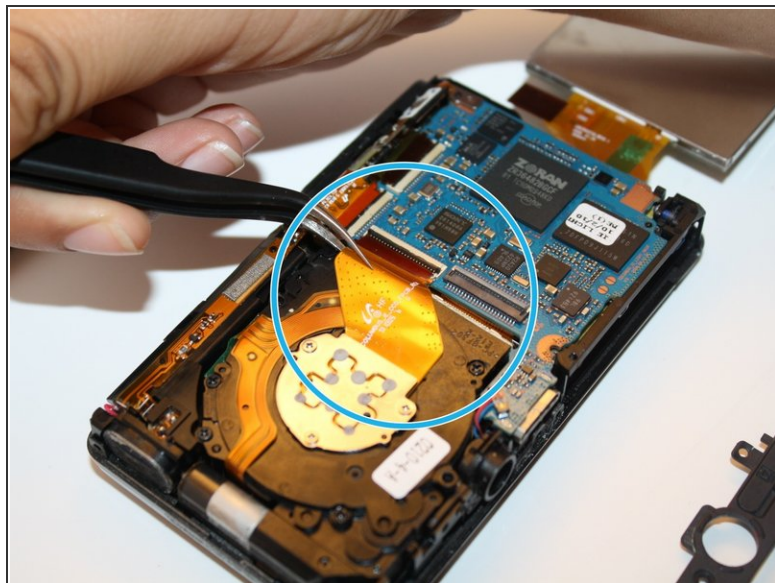
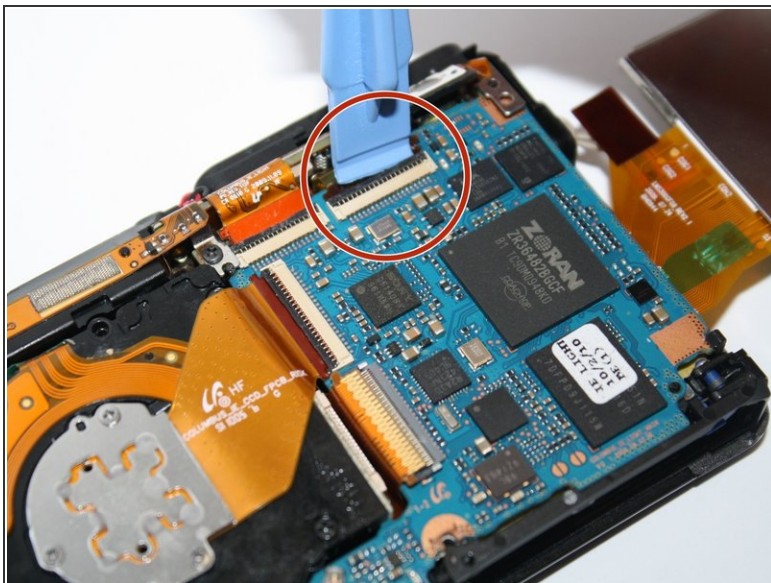
## Step 2



- Now that you have the back casing off, gently remove the LCD screen from the camera.
- Next unscrew the three 4 mm Philips screws on the back panel with the same screw driver(See image).

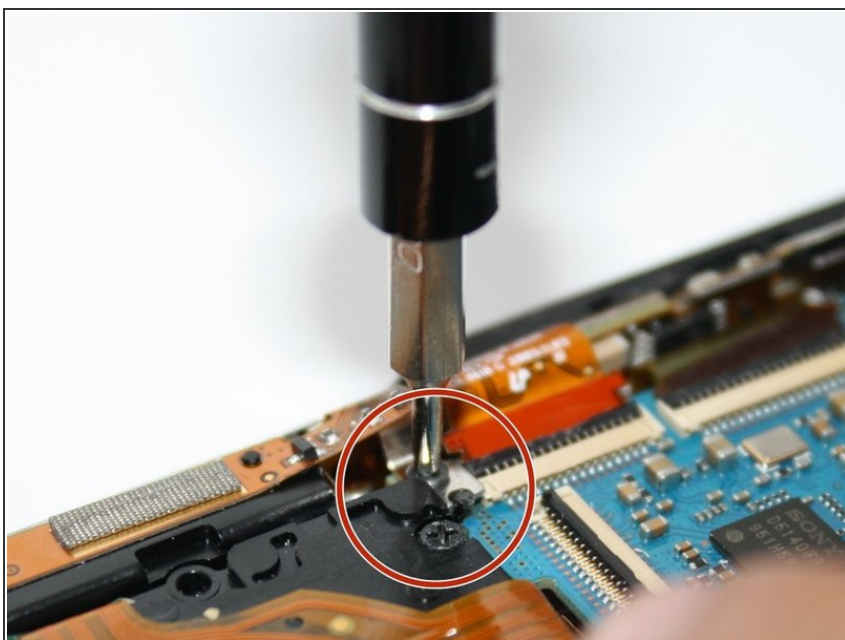


## Step 3



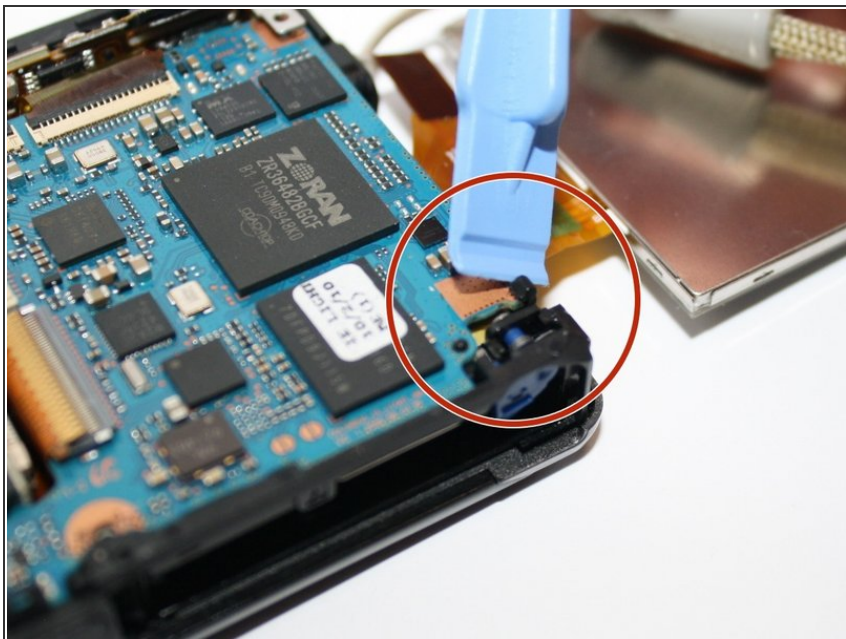
- Unclip the four connectors that hold down the orange copper film strips with the plastic opening tool.
- Then carefully pull out the three film strips with the ifixit tweezers.

## Step 4



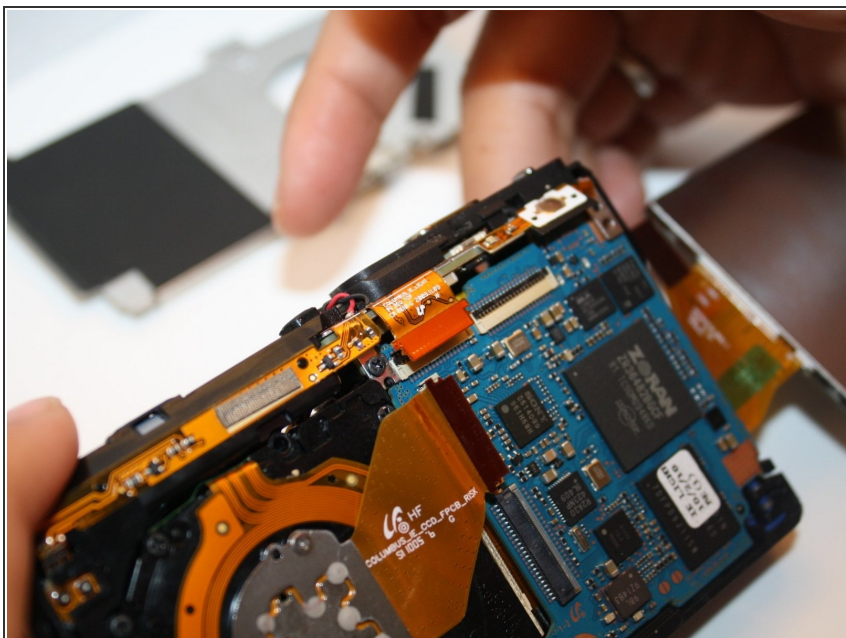
- Remove the 4 mm Philip screw located above the center film strip with the Philips screw driver. This will allow the top frame to come loose to take off.

## Step 5



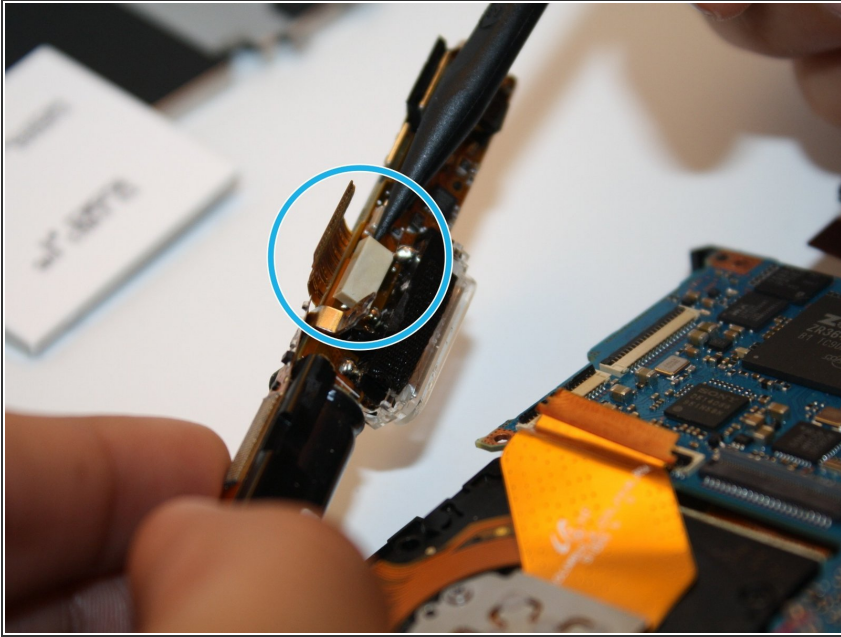
- Then pull back the black claw located at the bottom right of the camera, to the right with the plastic opening tool. This holds the main plate down.

## Step 6



- Slowly lift with your fingers, the top frame of the camera to get to the power button.

## Step 7



- Replace power button with new one.

To reassemble your device, follow these instructions in reverse order.