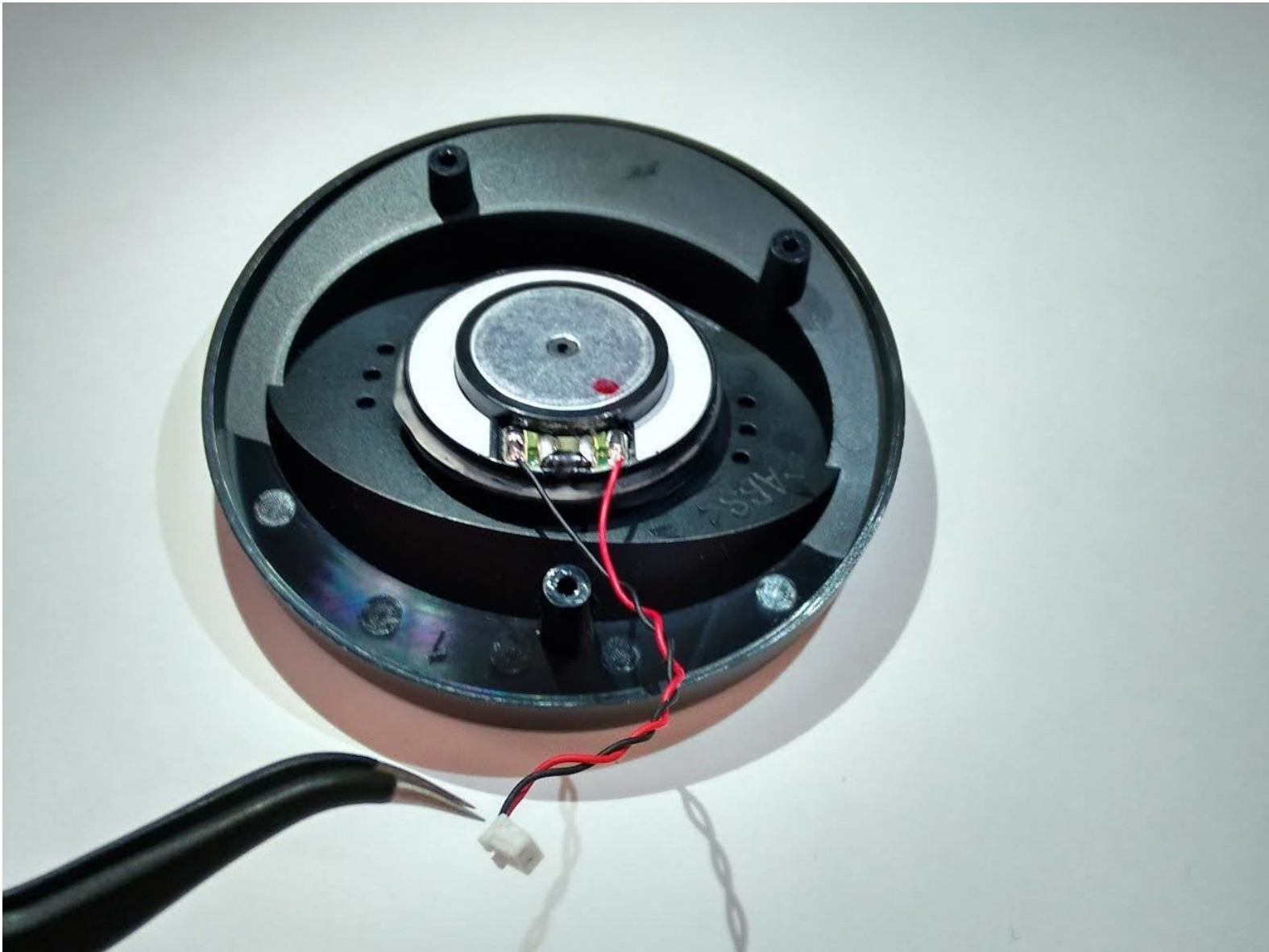




Sony Pulse Elite Edition Speaker Replacement

A guide on replacing the speaker inside a Sony Pulse Elite Edition.

Written By: Armon Davani



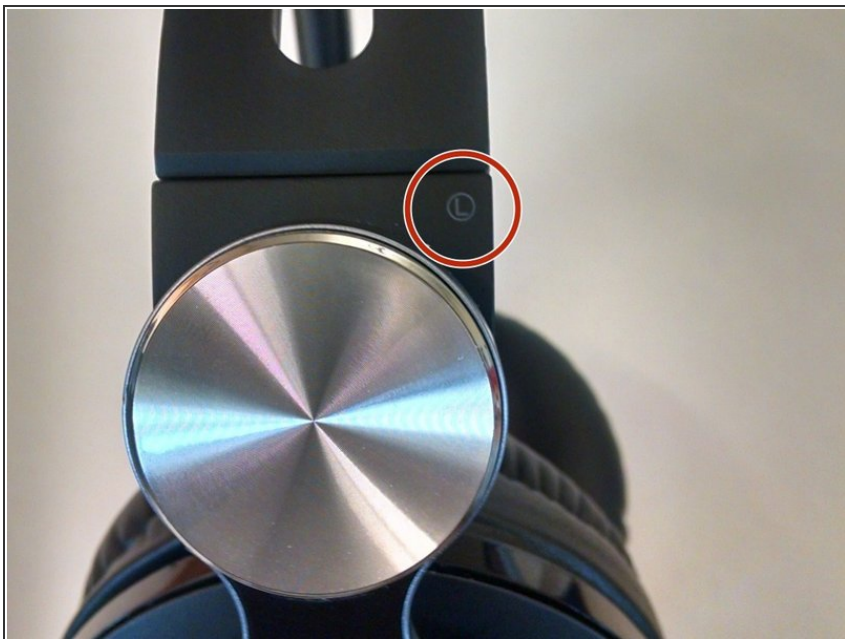
INTRODUCTION

This guide demonstrates how to open up your headset and locate the speaker for replacement if it stops working.

TOOLS:

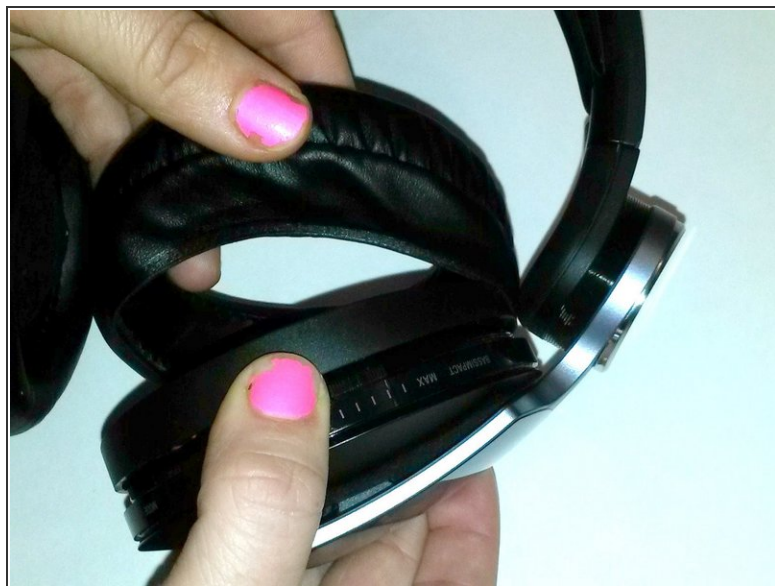
- [Super Glue](#) (1)
 - [Spudger](#) (1)
 - [Phillips #00 Screwdriver](#) (1)
-

Step 1 — Identifying Earpiece



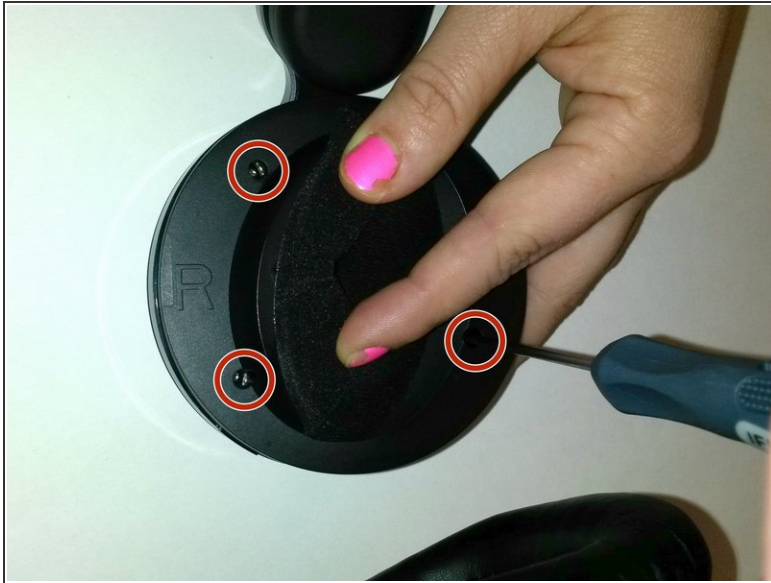
- Locate the left side designation on the headband-earpiece junction.
- The battery is in the right earpiece.
- The motherboard is in the left earpiece.

Step 2 — Ear Cushion Removal



- Gently pull around the perimeter of the left ear cushion until it comes off.

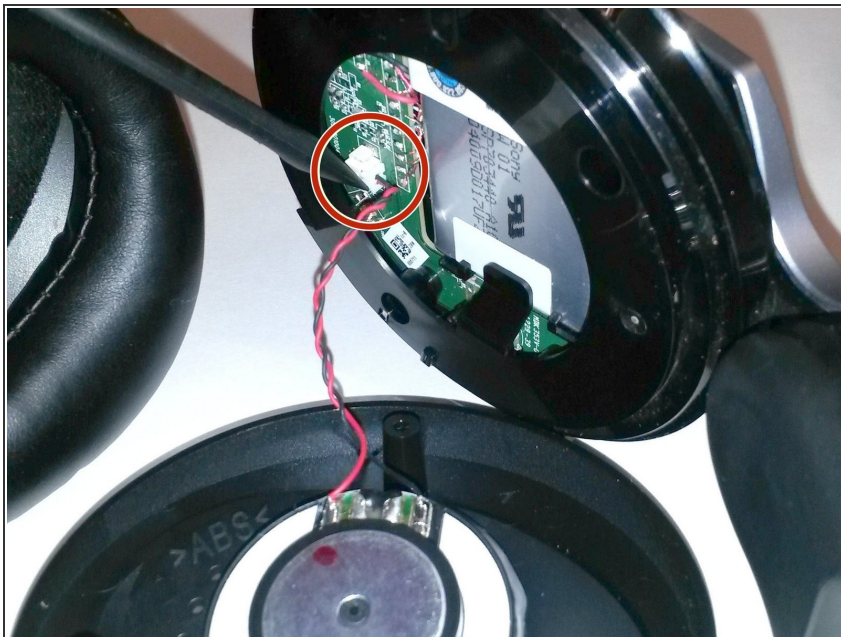
Step 3 — Outer Ear Rim Removal



- Use the PH00 Screwdriver to remove the three Phillips 6mm screws around the perimeter of the ear cup.
- Gently pull the outer ear rim off of the headset assembly.

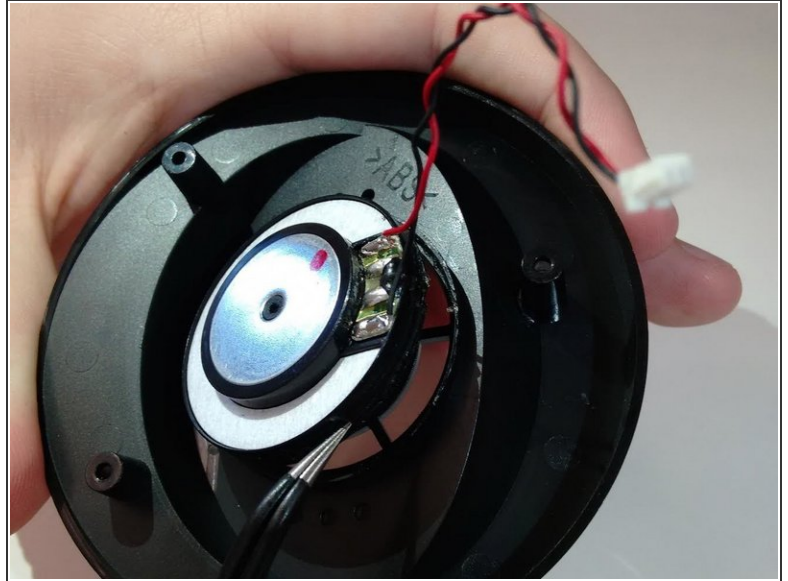
⚠ Harsh removal may cause permanent damage to the speaker wires.

Step 4 — Remove Speaker Housing



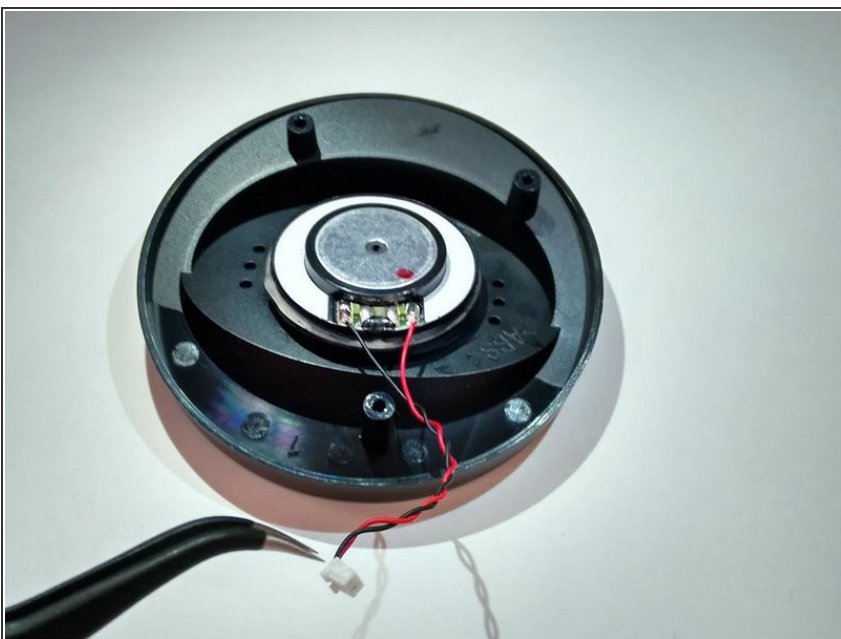
- Using tweezers, gently pry the red and black speaker wires from the attached socket.

Step 5 — Speaker



- Locate the junction of the electrical speaker and the plastic speaker housing.
- Use the spudger to sever the glue at this junction.
- Remove the electrical speaker from the speaker housing.

Step 6



- Use super glue to fasten the replacement speaker into the speaker housing.

To reassemble your device, follow these instructions in reverse order.