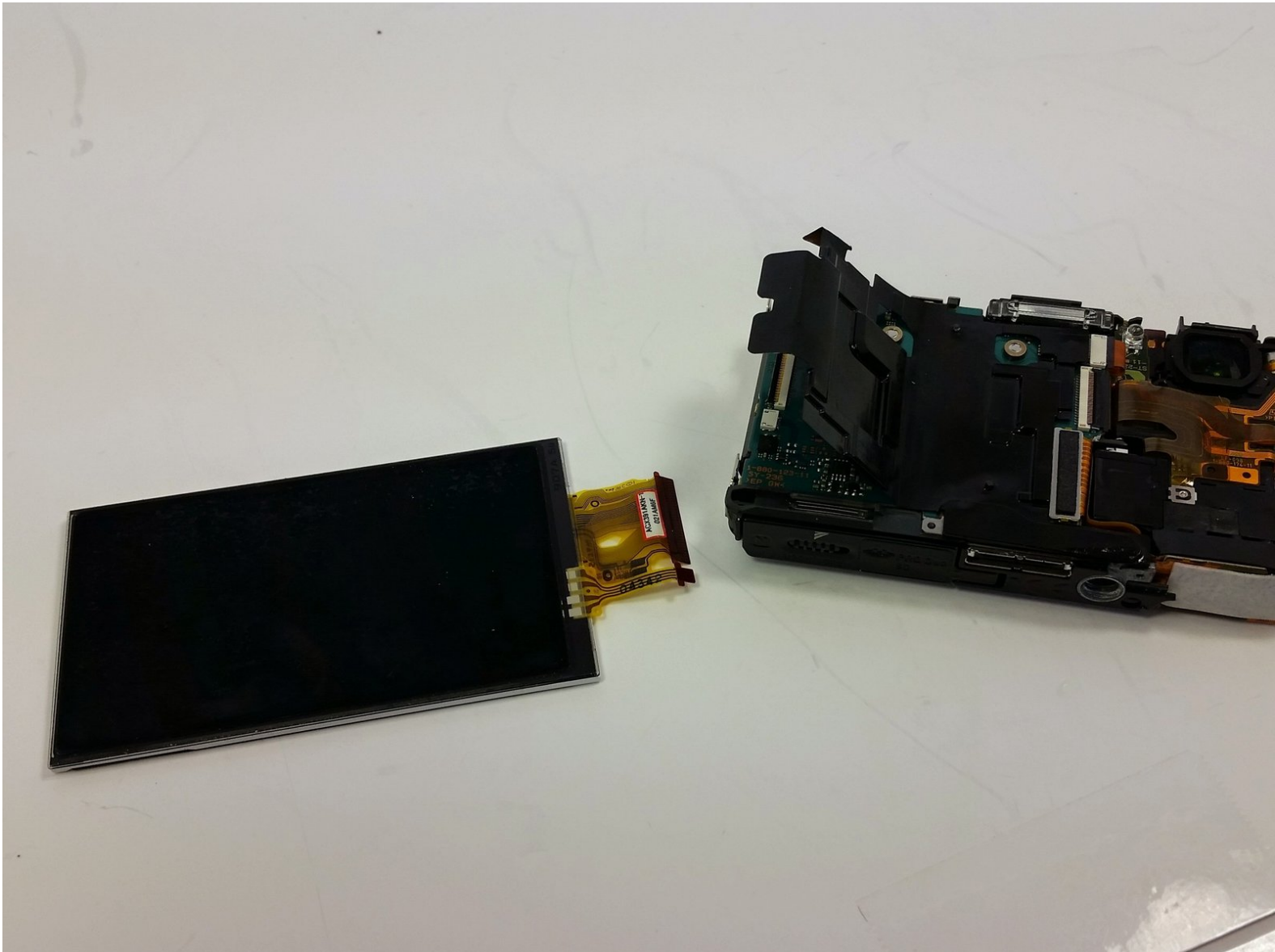




Sony Cyber-shot DSC-TX7 LCD Screen Replacement

This guide will teach the user to remove the LCD screen from the Sony Cyber-shot DSC-TX7.

Written By: Leslie Mundell



INTRODUCTION

This guide will allow the user to remove the LCD screen from the camera to be replaced.



TOOLS:

- [Phillips #00 Screwdriver](#) (1)
 - [iFixit Opening Tools](#) (1)
 - [Spudger](#) (1)
-


Step 1 — Battery



- The battery compartment is located on the bottom of camera.
- Move the slider from the 'lock' position to the 'open' position.

Step 2



 Battery not shown.

- Pull battery from compartment.
- Insert newly charged battery into compartment, as shown in diagram (located in compartment).
- Shut compartment door.
- Move the slider back to the 'lock' position.

Step 3 — Front Cover



- Use the Phillips #00 screwdriver to remove the 4mm length screws. There are 6 screws total.

Step 4



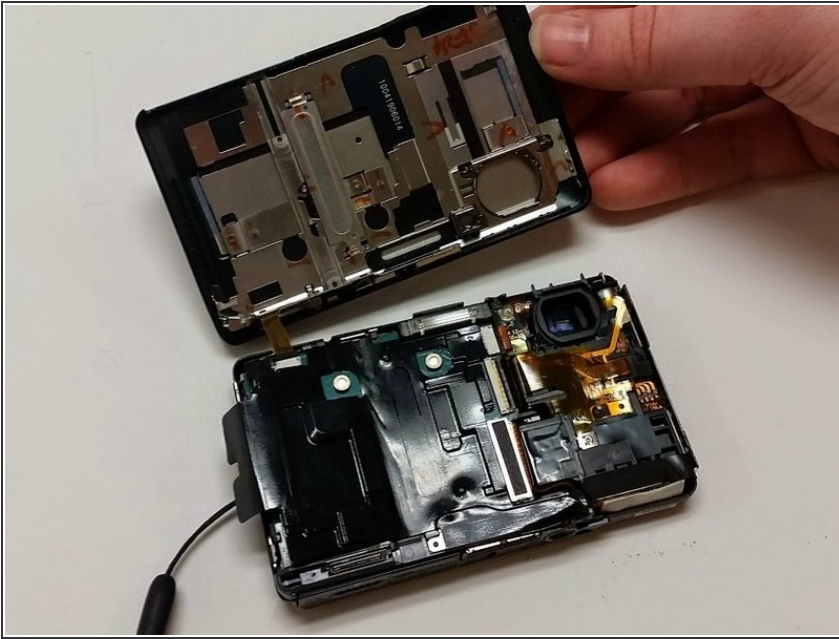
- The 4 mm length screws are located on each side and on the bottom of the camera.
- 2 screws on each side (4 total).
- 2 screws on bottom.

Step 5



- Gently pry around the front cover using the plastic opening tool.
- Carefully separate front cover from body of camera.

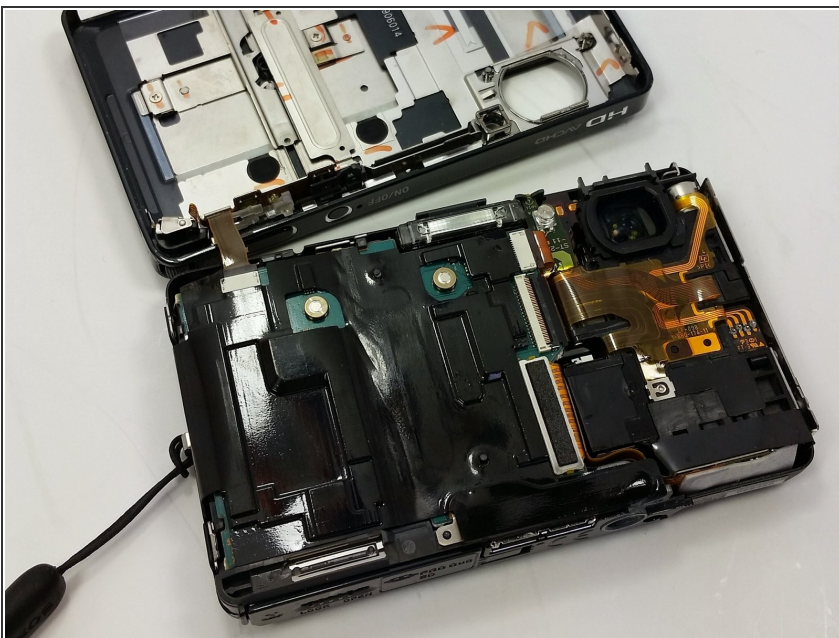
Step 6



- The front cover is now removed from the camera and the internal hardware is now visible.

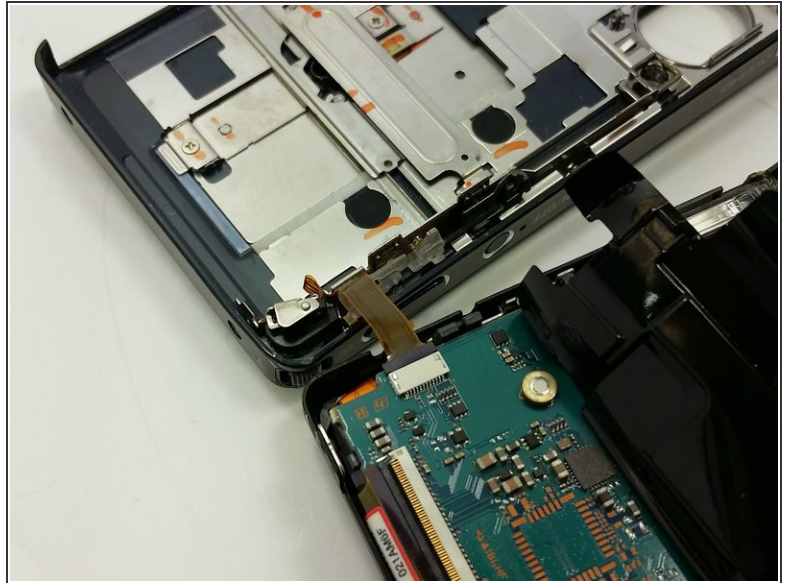
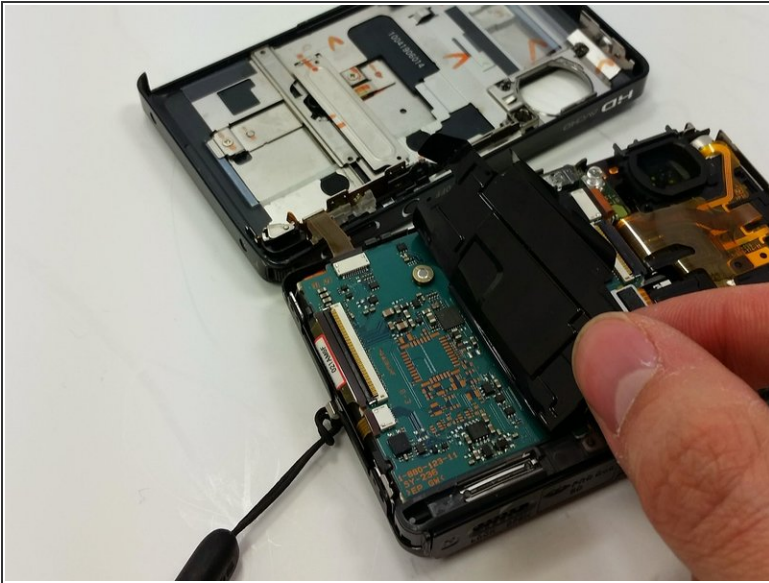
⚠ They front cover will still be connected by a ribbon. Be careful not to break the ribbon.

Step 7 — Back Cover



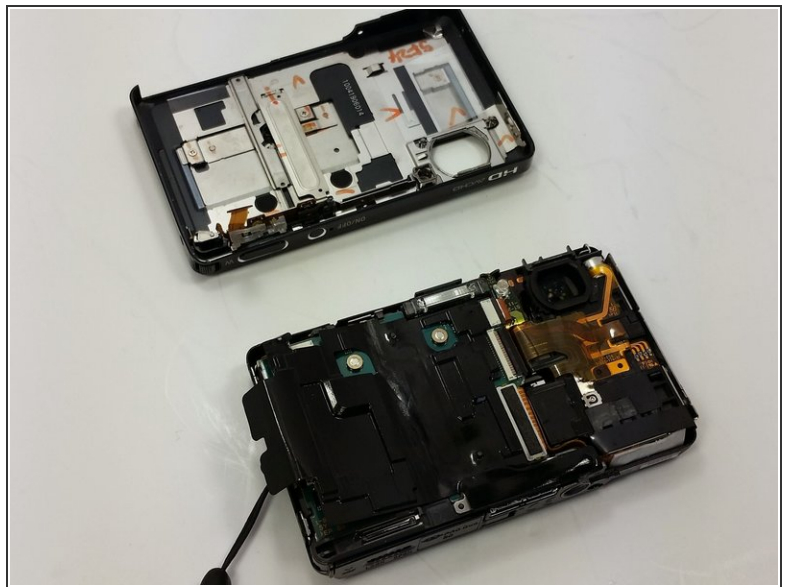
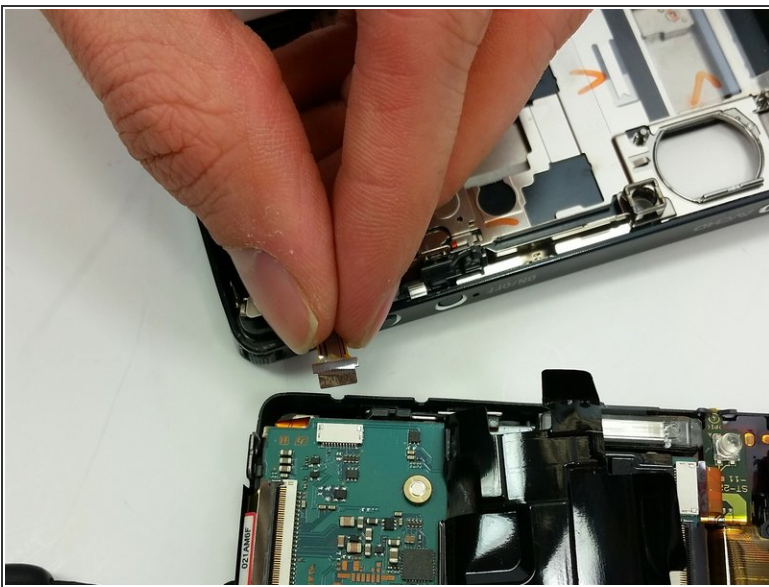
- This is the camera with the front cover unscrewed and partially removed.

Step 8



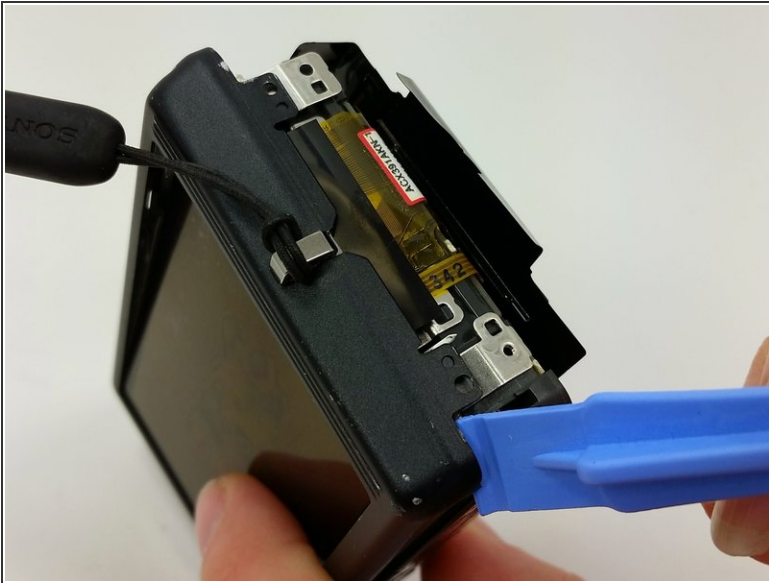
- Peel the black sticker from the motherboard.
- Locate the connection ribbon between the front cover and the body of the device.

Step 9



- Pull the ribbon out of the connection port so that they are completely disconnected.

Step 10



- Use the plastic opening tool to separate the back cover from the inner hardware.
- Continue until back cover can be pulled away from inner hardware.

Step 11



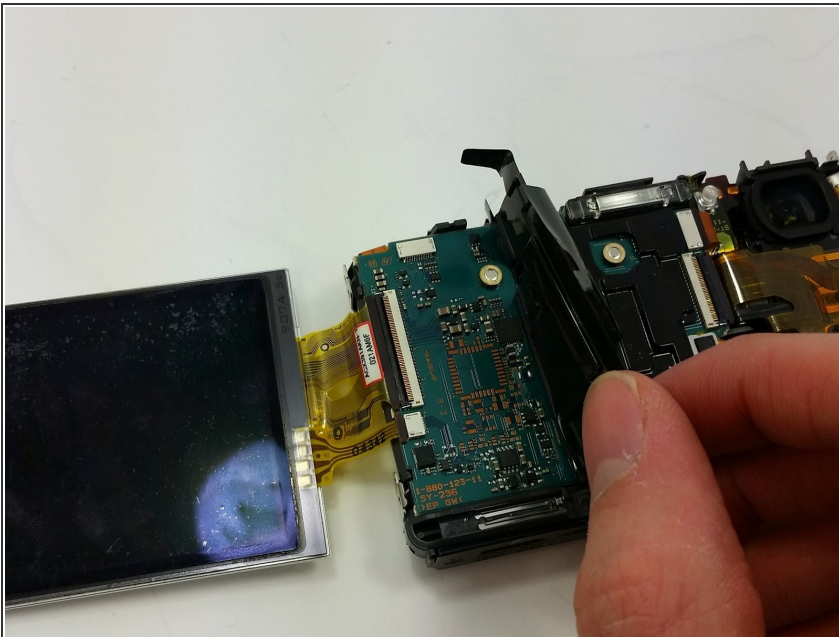
- Remove the back cover so that the back cover is now completely separate from the body of the device.

Step 12 — LCD Screen



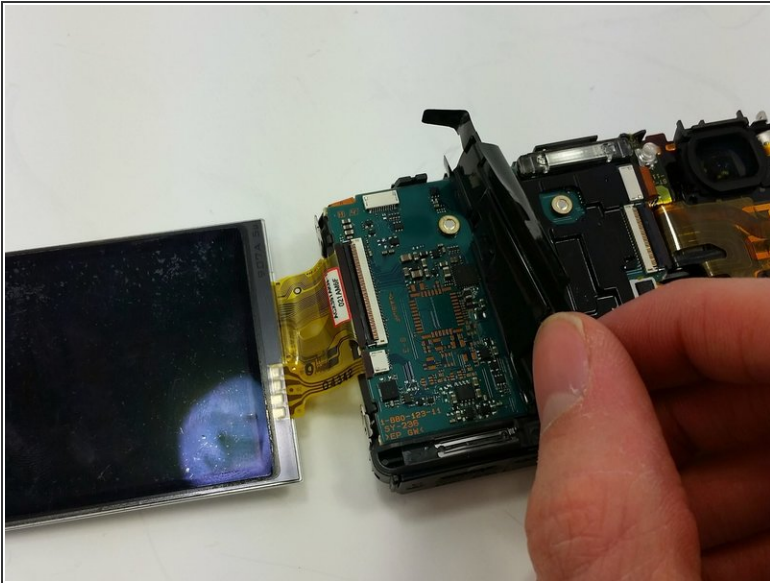
- Pry the LCD screen using the spudger from the back of the camera.
- Flip screen away from body of device.

Step 13



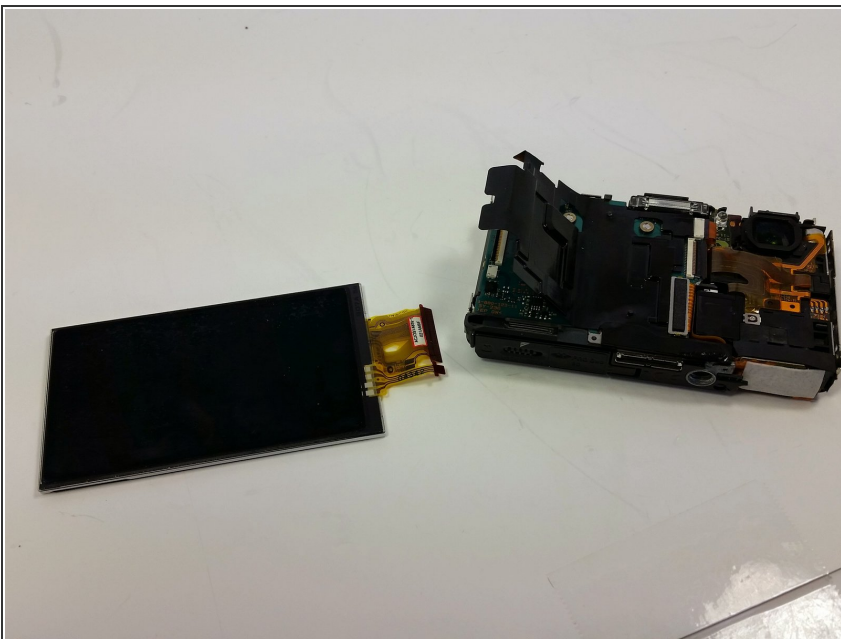
- Lay the camera as shown, so that screen and camera body are next to each other, connected by the yellow ribbon.
- Peel back the black sticker covering the motherboard.

Step 14



- Locate the yellow ribbon's connection port.
- Flip the black bar holding the ribbon in place toward the body of the camera.

Step 15



- Pull the yellow ribbon out of the connection port.
- The LCD screen is now separate from the body of the device.

To reassemble your device, follow these instructions in reverse order.