



Garmin nüvi 3590 LMT Battery Replacement

Replace your dying battery to bring the power back to your GPS.

Written By: David



INTRODUCTION

This guide will serve as a prerequisite for further guides to ensure workbench safety for the Garmin nüvi 3590 LMT.

WARNING: Use caution when dealing with batteries and dispose of properly. DO NOT PUNCTURE.



TOOLS:

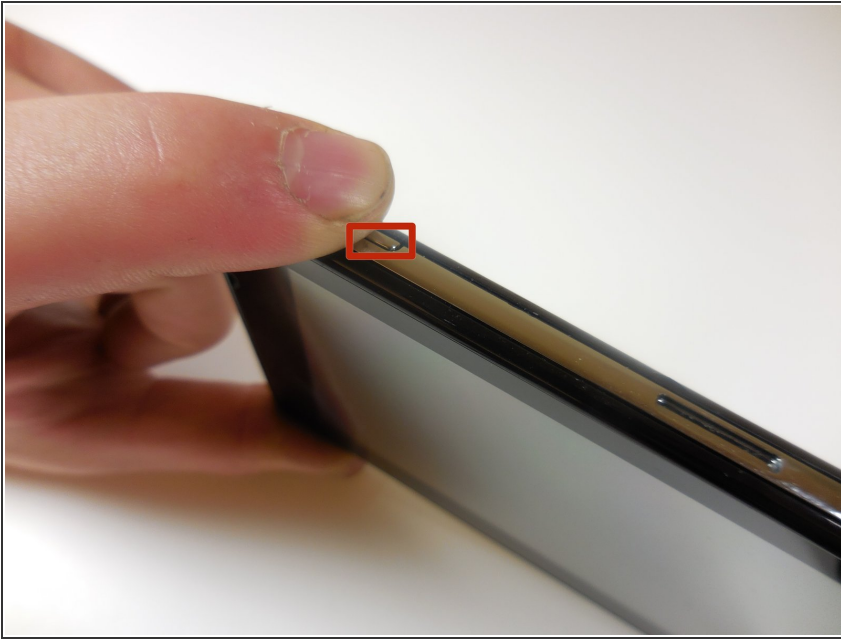
- [iFixit Opening Tools](#) (1)
- [Metal Spudger](#) (1)



PARTS:

- [Garmin 3590 replacement battery \(3.7V, 1.24Ah, 4.6Wh\)](#) (1)

Step 1 — Battery



- Turn the device off by pressing and holding the power button on the top left of the device.

Step 2



- Use the plastic opening tool to separate the tabs on the black back cover of the device by leveraging the tool against the frame around the perimeter of the device.

Step 3



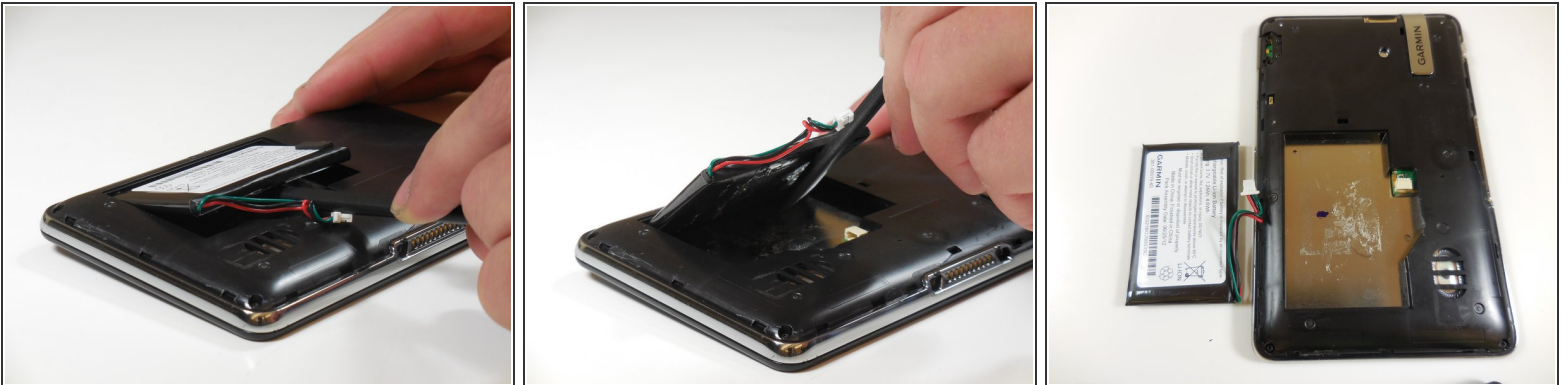
- Once all of the tabs are popped out, take the back cover off.
- ⓘ The back cover is a separate piece from the device.

Step 4




- Using the plastic spudger, carefully remove the white tab connected to the battery from the device by pulling the tab in the opposite direction from which it is connected.

Step 5



- Use the plastic spudger to lift the battery up and away from the device.

 Do not puncture or bend the battery. Serious health complications could occur.

To reassemble your device, follow these instructions in reverse order.