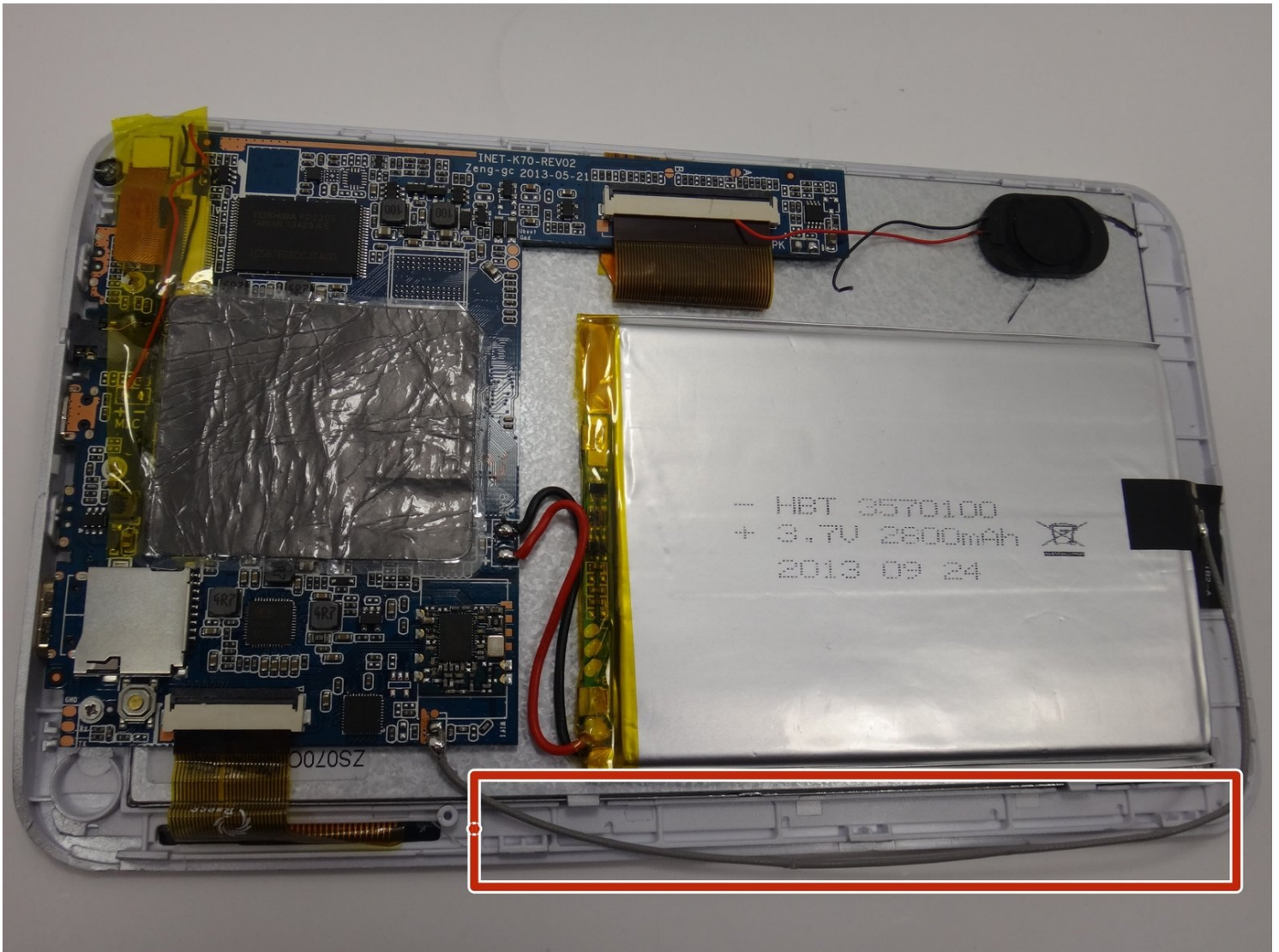




How to replace the Azpen A720 Wi-Fi Antenna

This guide will demonstrate the replacement of...

Written By: Anna



INTRODUCTION

This guide will demonstrate the replacement of the internal Wi-Fi antenna, which is important for connecting your Azpen A720 tablet to Wi-Fi. This replacement may be necessary if you are having issues connecting to Wi-Fi.

This replacement is relatively simple. All you will need is a soldering iron and solder, a magnetic project mat, a Phillips #00 screwdriver, and an iFixit opening tool.

TOOLS:

[Soldering Iron](#) (1)

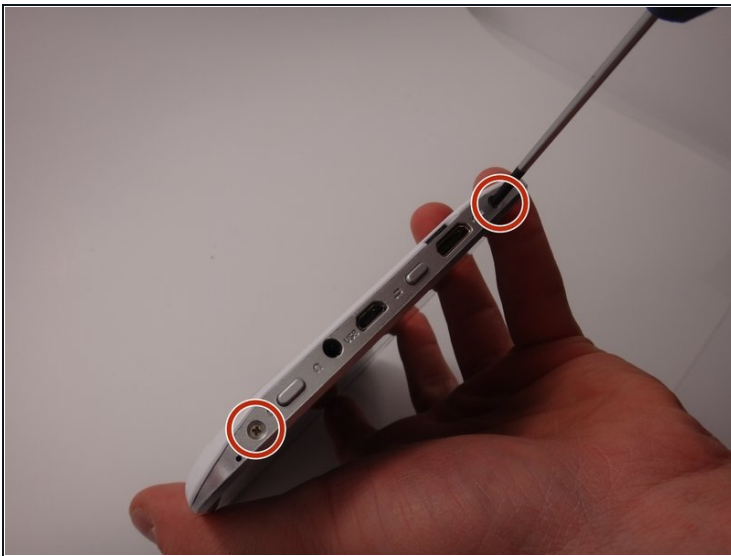
[Lead-Free Solder](#) (1)

[Magnetic Project Mat](#) (1)

[Phillips #00 Screwdriver](#) (1)

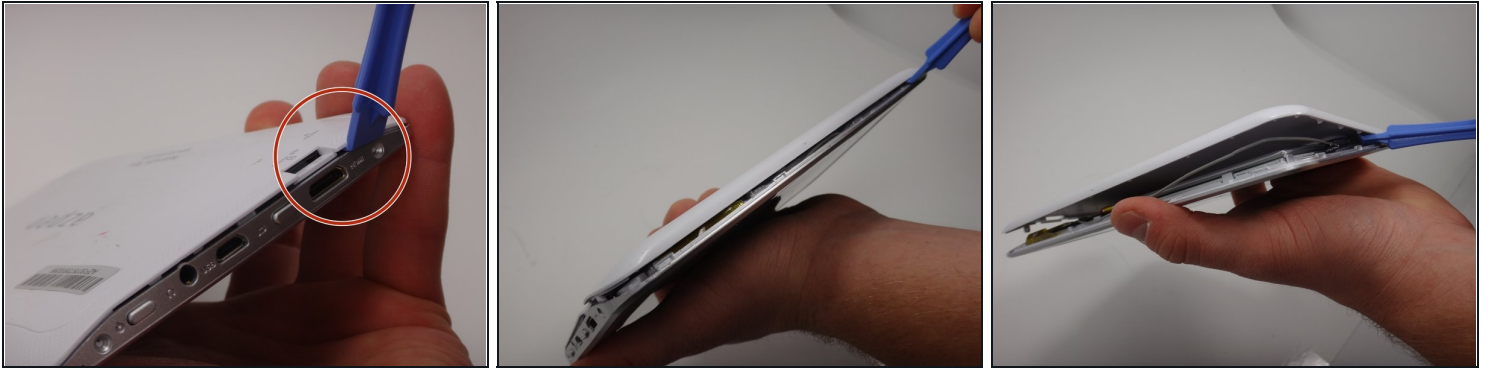
[iFixit Opening Tool](#) (1)

Step 1 — Back Cover



- Use a Phillips #00 screwdriver to remove the two 4mm screws found on the top edge of the tablet near the power button.

Step 2



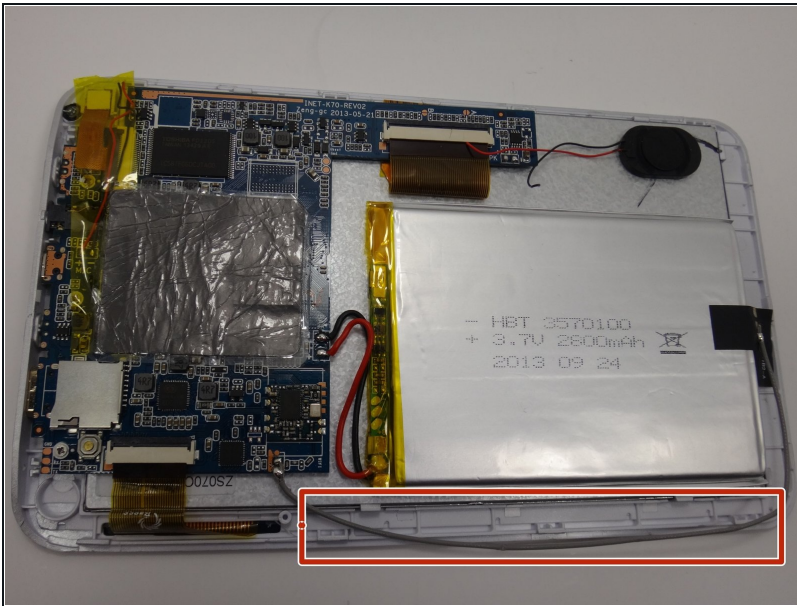
- Use the plastic opening tool to pry the white back from the silver frame. Start near the micro SD slot.
 - ① Slide the plastic opening tool around the perimeter of the casing until the back is disconnected.

Step 3



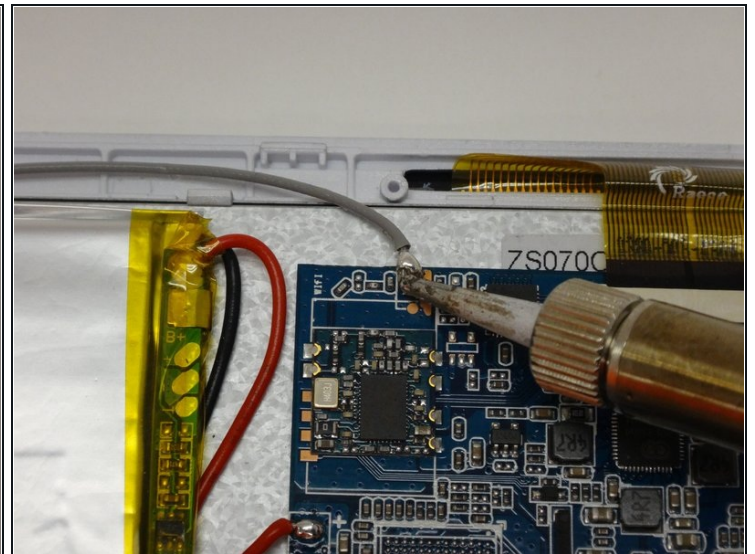
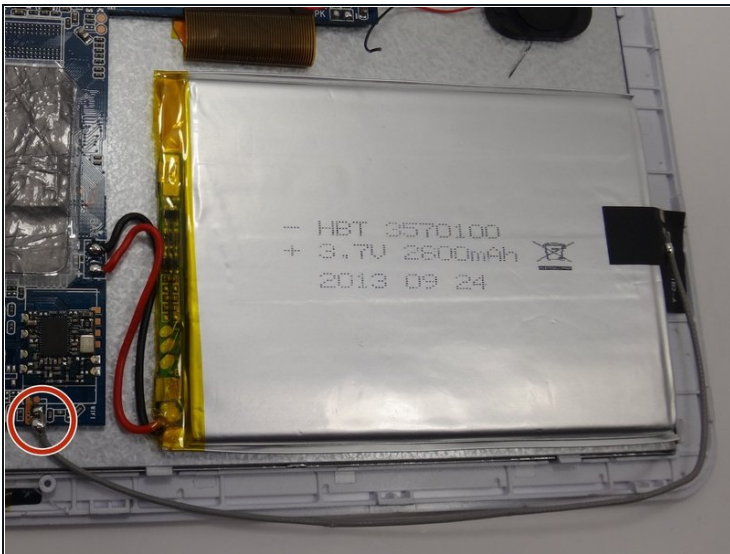
- Remove the rear casing.

Step 4 — Wi-Fi Antenna



- Locate the gray cord attached to the motherboard and the battery. This is the wifi antenna.

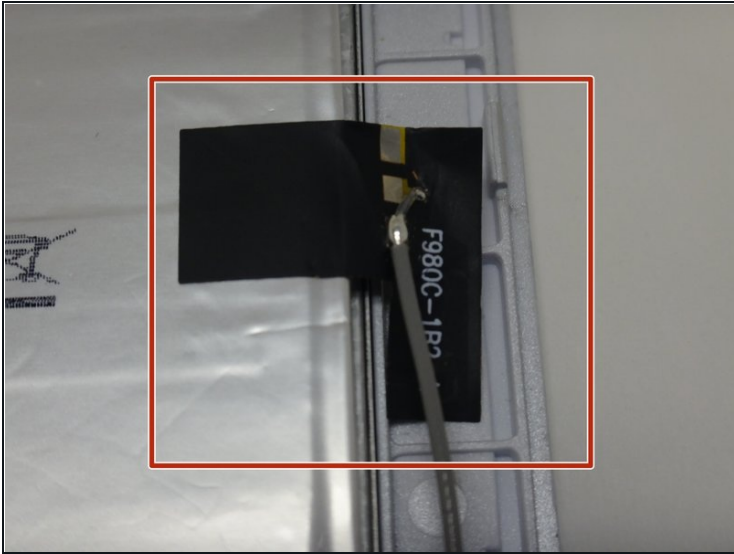
Step 5



- Locate the soldering connection between the wifi antenna and the motherboard.
- Using a soldering iron, melt the soldering connection between the cord and the motherboard and disconnect the cord.

⚠ The soldering iron gets very hot, be careful not to touch the tip to avoid burns. Click [here](#) to learn how to solder.

Step 6



- Locate the black sticker connecting the wifi antenna to the battery.
- Peel the black sticker off of the battery to disconnect the wifi antenna.
- Remove and replace the defective wire.

To reassemble your device, follow these instructions in reverse order.