



Olympus 850SW Battery Latch Replacement

This guide will provide step by step instructions on how to replace the battery latch.

Written By: Kathleen

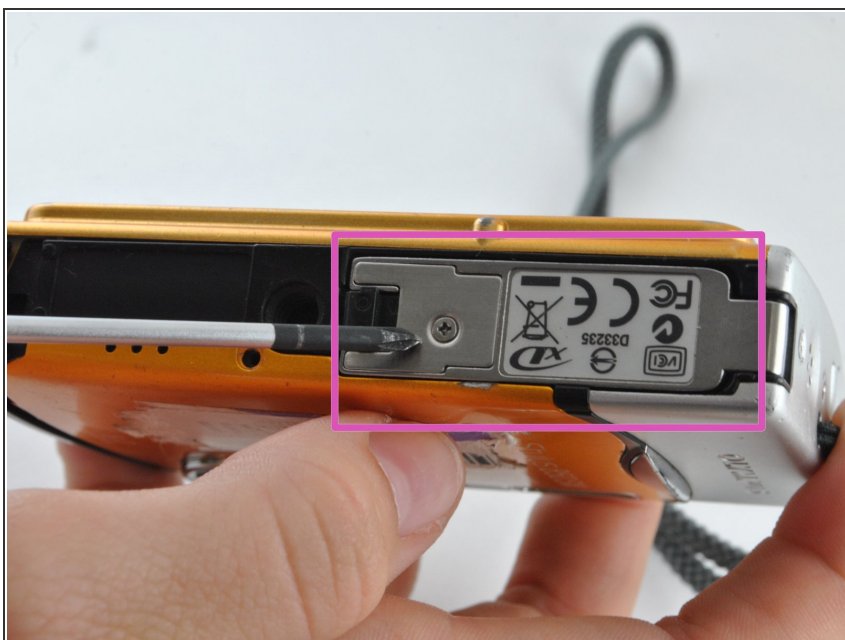




TOOLS:

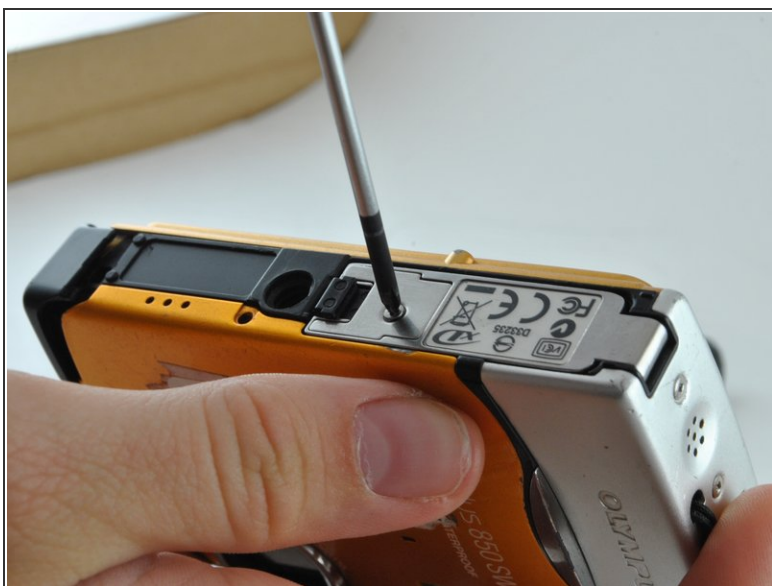
- [Essential Electronics Toolkit](#) (1)
-

Step 1 — Battery Latch



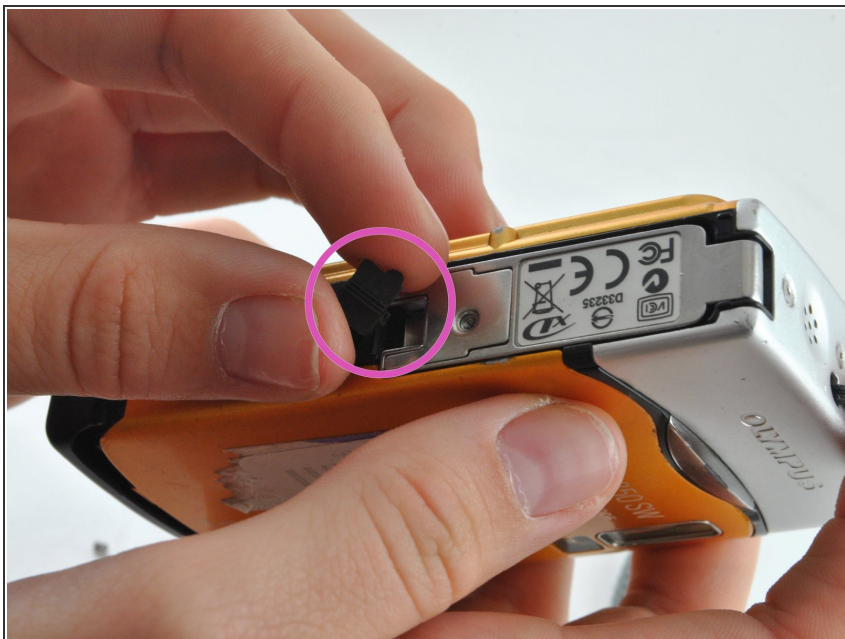
- Locate the battery latch on the bottom of the device.

Step 2



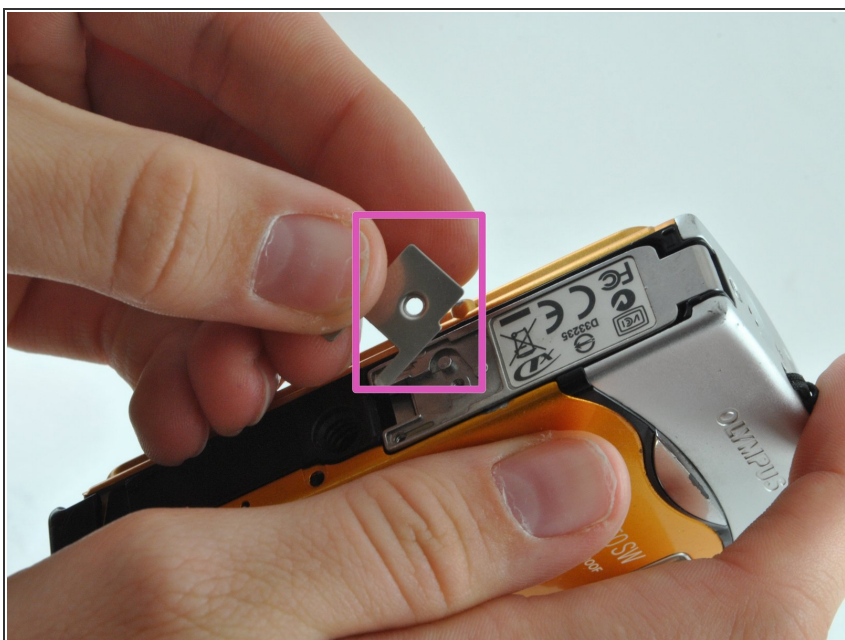
- Unscrew the one screw on the latch.
- Remove the screw.

Step 3



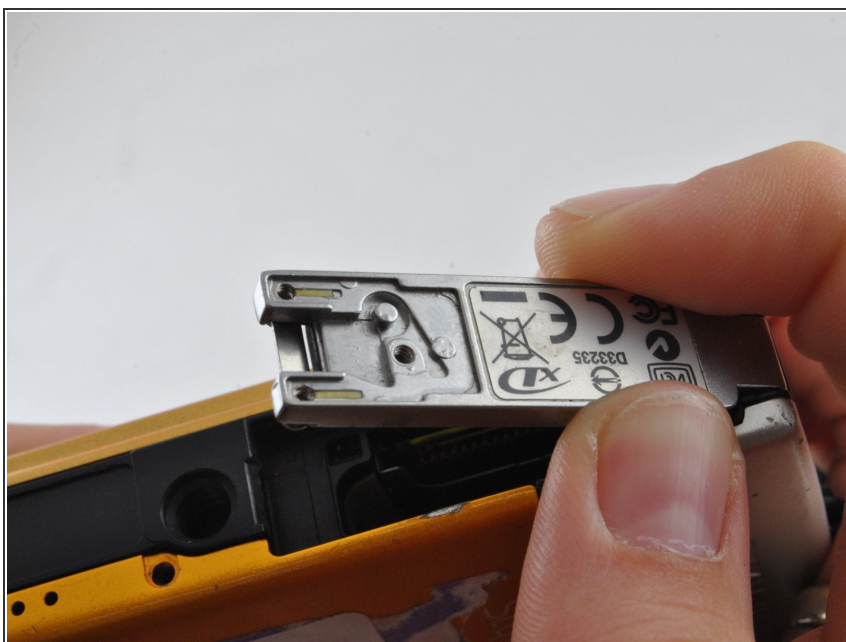
- Remove the small black plastic piece positioned at the opening side of the battery latch.

Step 4



- You will now be able to lift and remove the thin metal covering from battery latch.

Step 5



- Open the latch.

Step 6



- Locate the screw in the center crease of the opening of the battery latch.

To reassemble your device, follow these instructions in reverse order.