



Waka Waka Power Plus Battery Replacement

This guide will show you how to replace the battery of the Waka Waka Power Plus.

Written By: C2C 2



INTRODUCTION

This guide will show you how to replace the battery of the Waka Waka Power Plus.



TOOLS:

- [Phillips #1 Screwdriver](#) (1)
 - [Flathead Screwdriver](#) (1)
-

Step 1 — Collect your tools



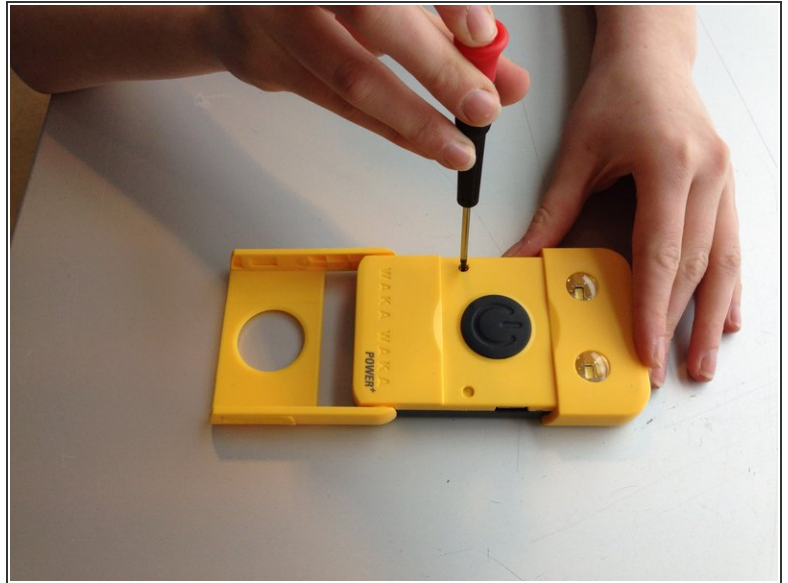
- You'll need a 50mm Phillips screwdriver and a flathead screwdriver as thin as possible.

Step 2 — Flip the standard



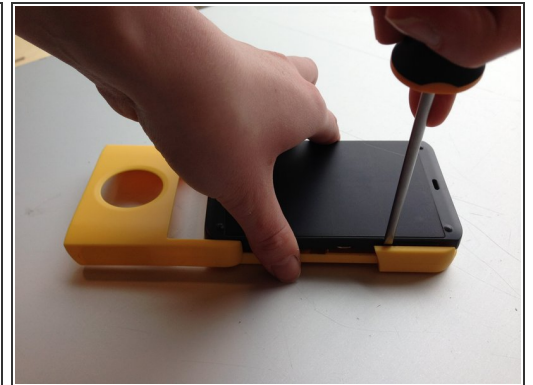
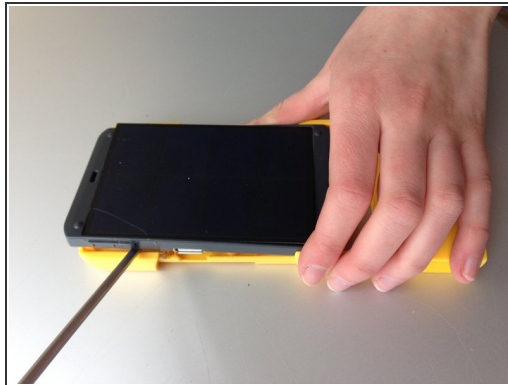
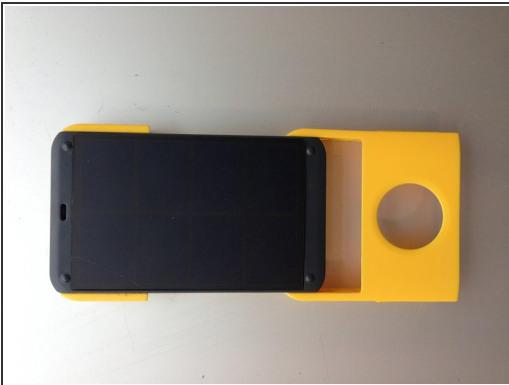
- Place the Waka Waka with the yellow side up. Flip the standard just as in the right picture.

Step 3 — Unscrew the Waka Waka



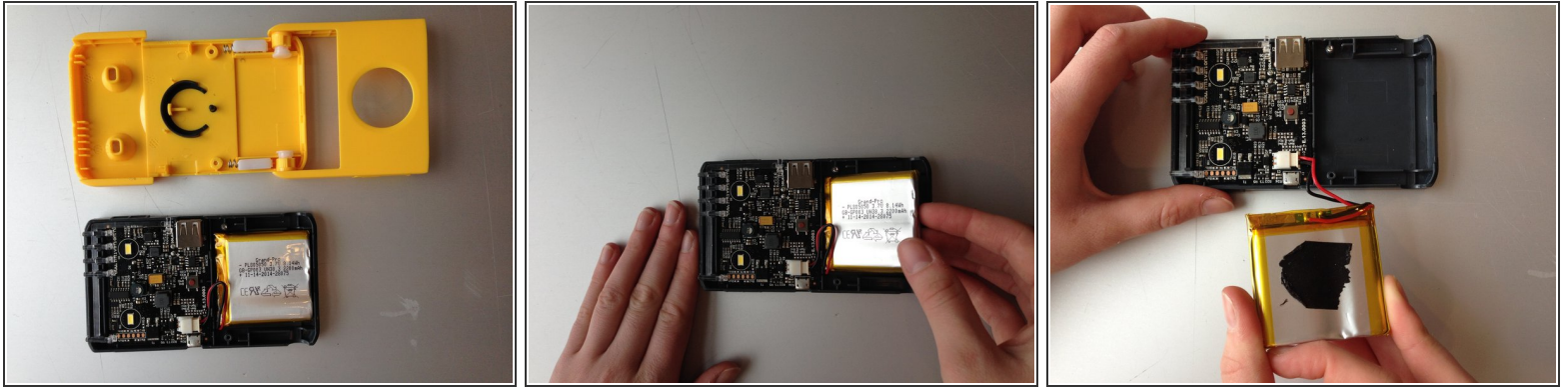
- First you remove the two yellow rubbers using your nail or the screwdriver. Then use the Phillips screwdriver to remove the two screws.

Step 4 — Open the Waka Waka case



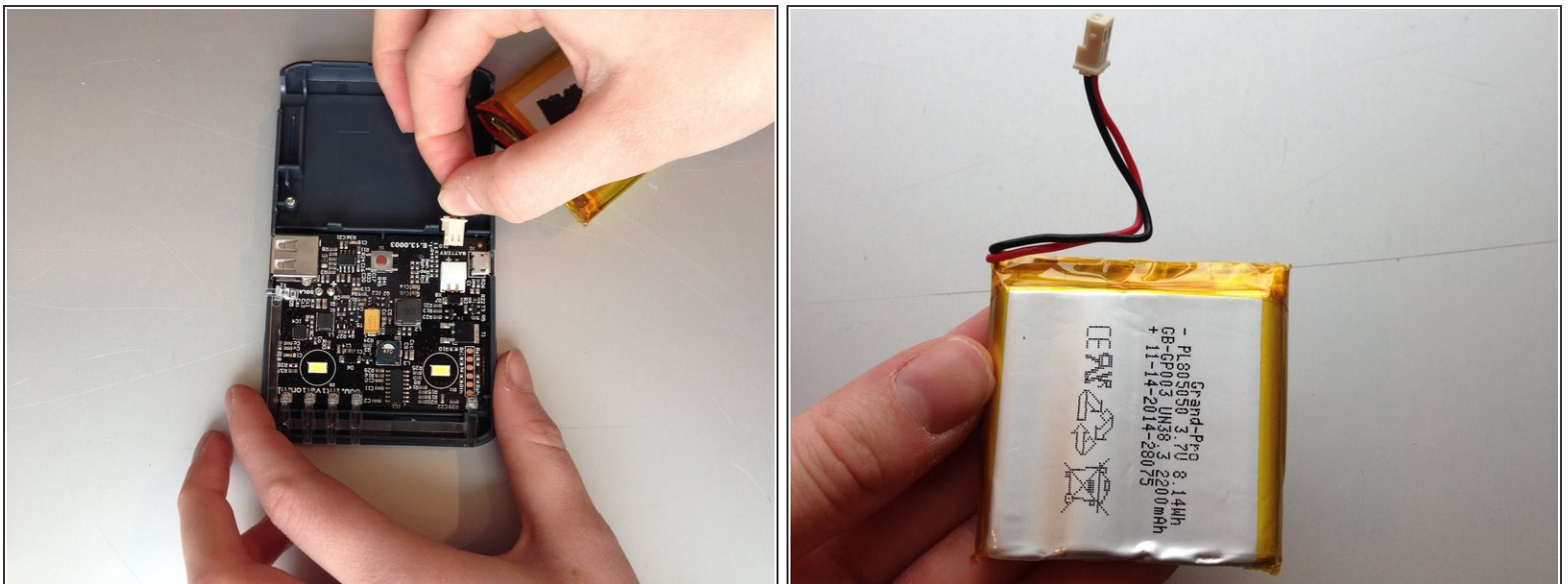
- Turn the Waka Waka upside down. Make sure the Waka Waka is placed on a flat surface. Place the flathead screwdriver between the yellow and the black part as can be seen in the second picture. Force will be needed. If one side came loose, do the same for the other side.

Step 5 — Remove the battery



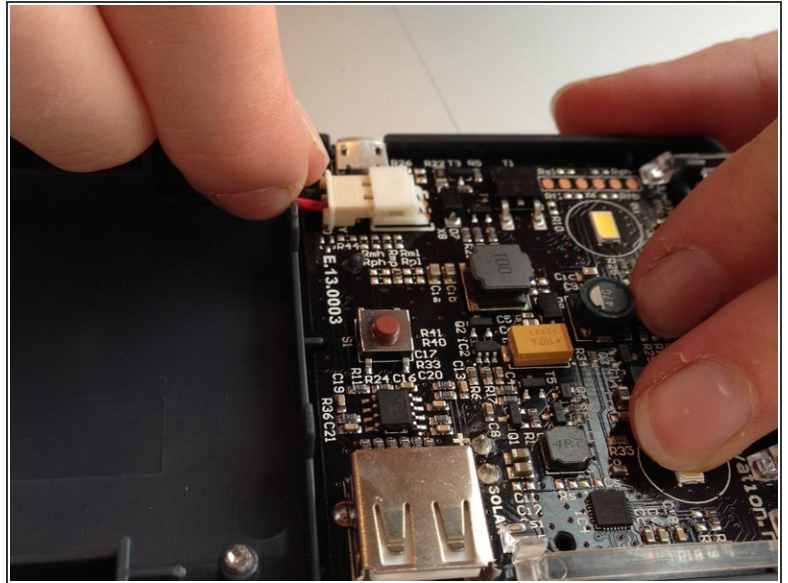
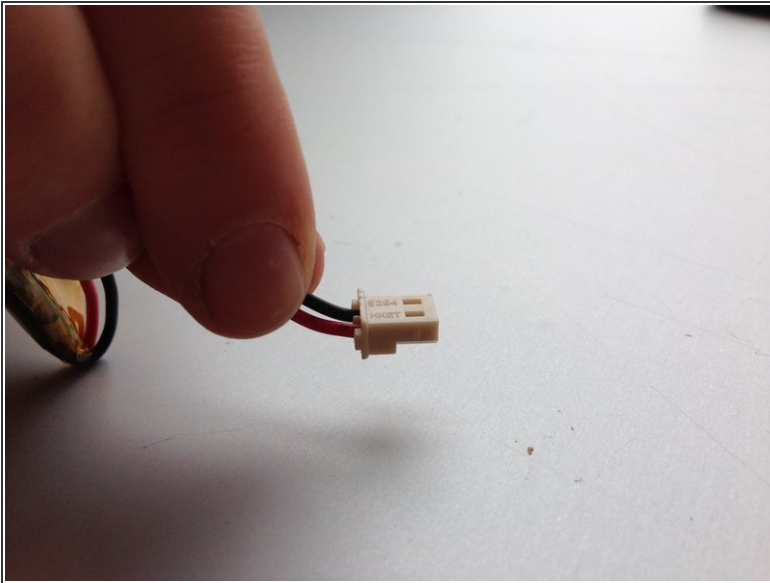
- Now you see all the components in the Waka Waka. The battery is attached to the case with tape, so you have to use force to pull it off.

Step 6 — Remove the battery 2



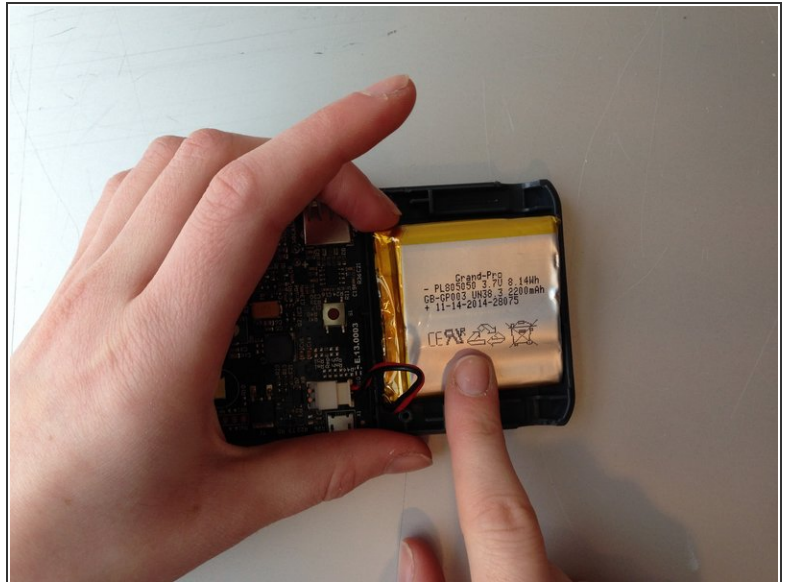
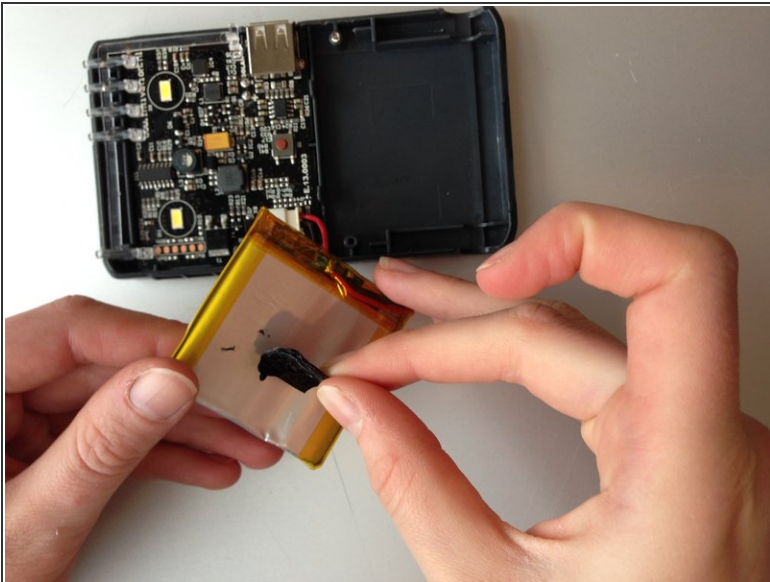
- Remove the battery from the PCB by pulling the cables out of the clicking system.

Step 7 — Place the new battery



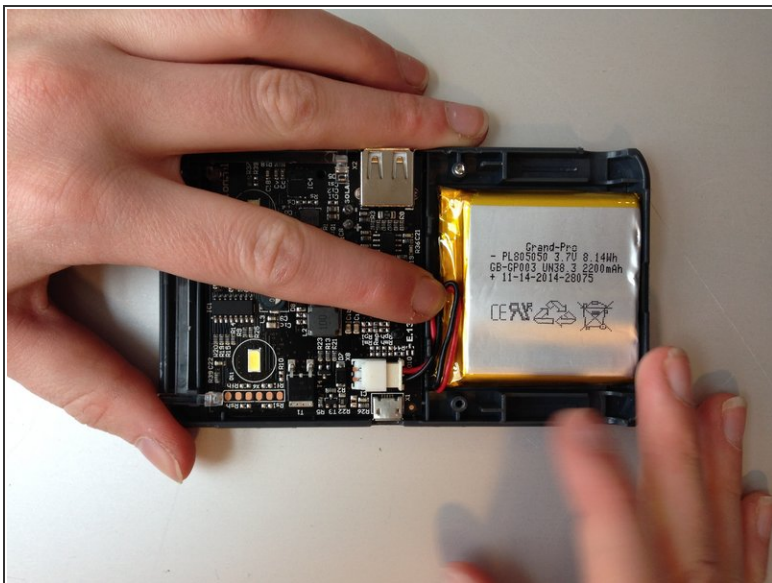
- While placing the new battery, make sure the connector is not upside down as you can see in the first picture. Click it in the PCB.

Step 8 — Place the new battery 2



- Use double sided tape to attache the battery to the case. Place the battery back in the case as shown in the second picture.

Step 9 — Place the components in the right position



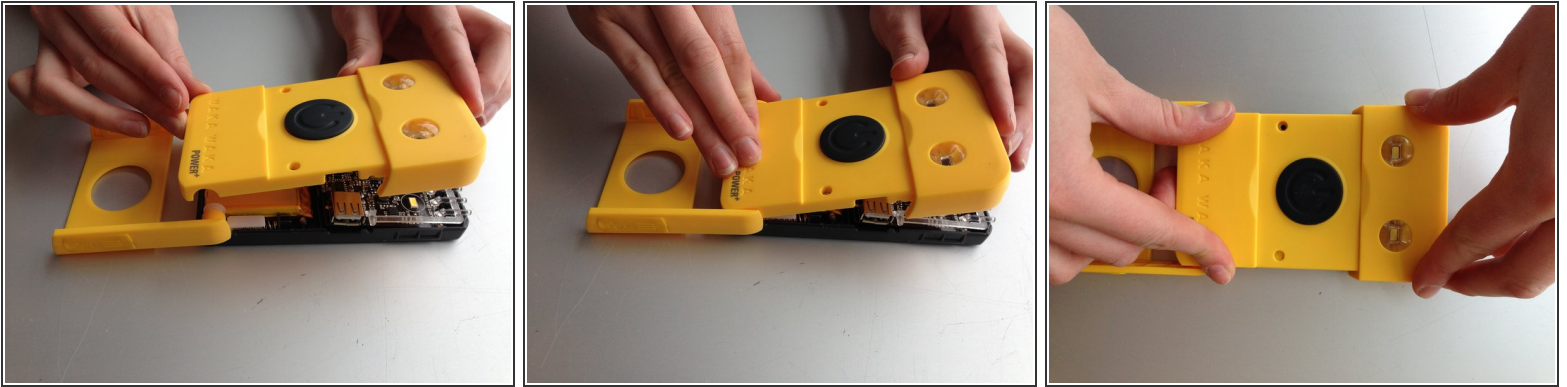
- Push the electricity cables aside. Place the springs in the case next to the battery.

Step 10 — Place the standard



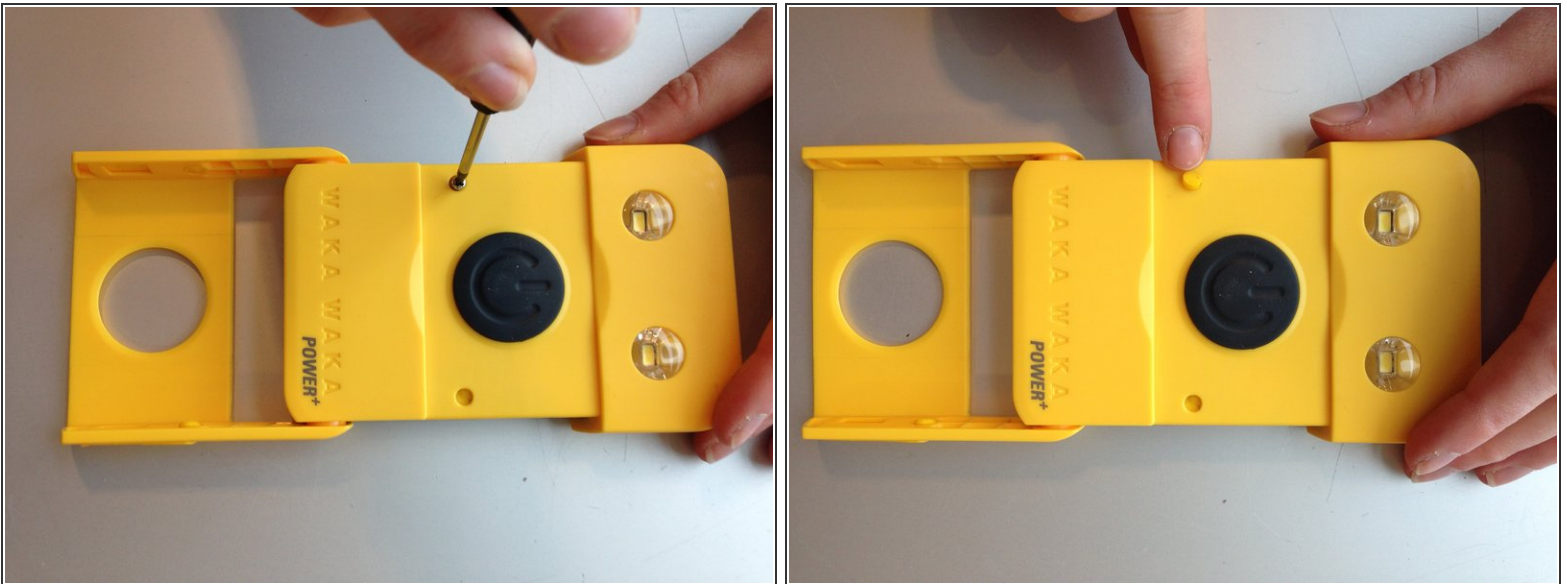
- Place the standard. Make sure the standard is placed in the right position.

Step 11 — Click the two parts together



- Place the yellow part above the other half. First push where the springs are placed. Use force. Than push the rest until you hear a click.

Step 12 — Replace the screws



- Replace the screws and the yellow plugs. Check if everything is working again.

To reassemble your device, follow these instructions in reverse order.