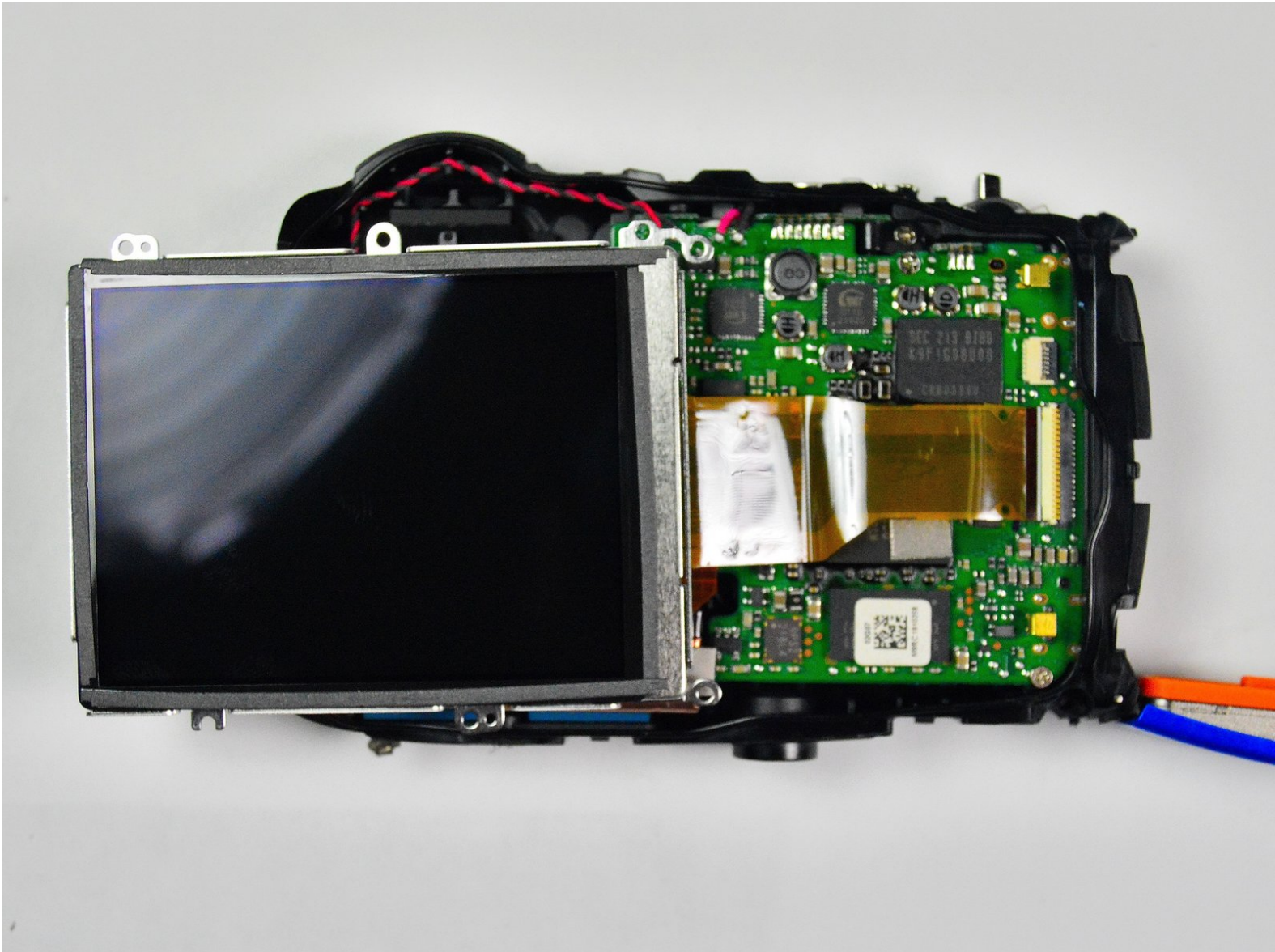




FujiFilm FinePix XP50 LCD Screen Replacement

This guide features instructions to replace the LCD screen of the Fujifilm FinePix XP50.

Written By: Catherine Daniel



INTRODUCTION

Although a non-functioning screen would be hard to manage with this device, replacing the LCD screen is relatively easy.

TOOLS:

- [Spudger](#) (1)
 - [Phillips #00 Screwdriver](#) (1)
 - [1.5mm Hex Screwdriver](#) (1)
-

Step 1 — Rear Case



- Using 1.5mm Hex Screwdriver, remove two 3.0 mm hex screws on the front of the camera.
- Using Phillips #00 screwdriver, remove two 3.0 mm screws on the bottom of the front face.

Step 2



- Using Phillips #00 screwdriver, remove 3.0 mm screws on the bottom of the camera closer to the back.
- Using Phillips #00 screwdriver remove two 3.0 mm screws on the back of the camera. This will remove the eyelet for the camera strap and the rear cover.

Step 3



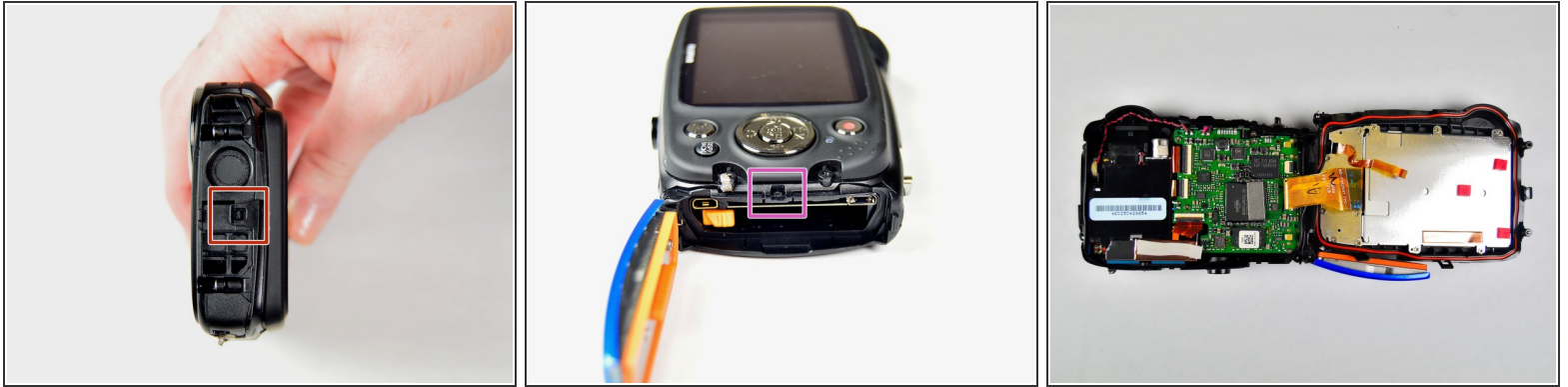
- Using Phillips #00 screwdriver, remove the two 3.0 mm screws.

Step 4



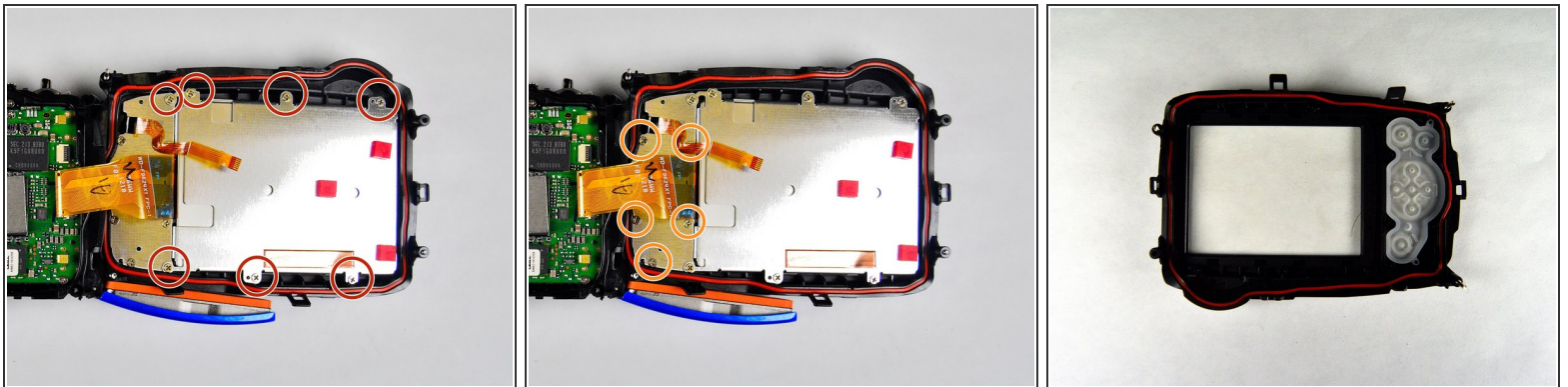
- Using 1.5mm Hex screwdriver, remove 3.0 mm hex screw on top edge of silver panel.
- Using Phillips #00 screwdriver, remove 3.0 mm screw on bottom edge.
- Once both screws are removed the silver side casing will slide off.

Step 5



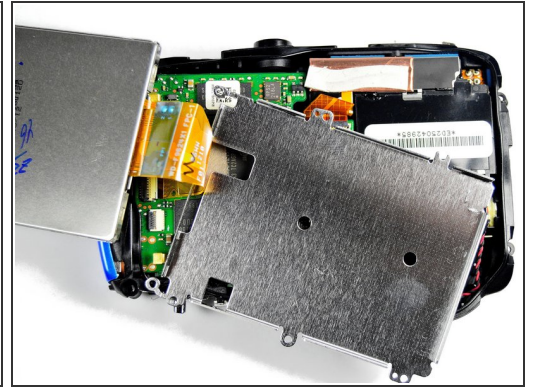
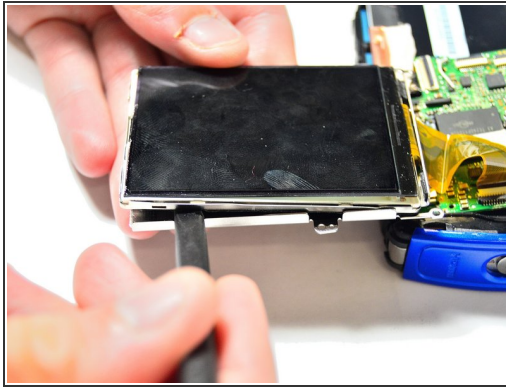
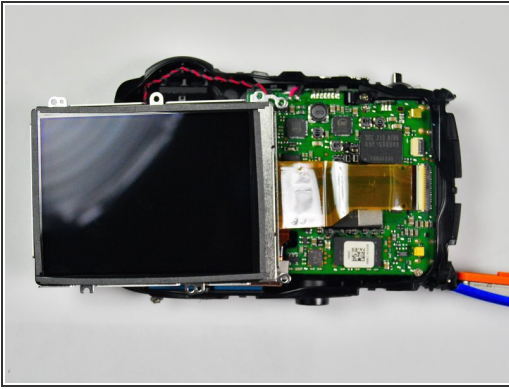
- Unlatch the four clasps located on each side of the camera by hand.
- The fourth clasp is concealed by the battery door. To reach the clasp see [Fujifilm FinePix XP50 Battery Replacement](#) for instructions.

Step 6



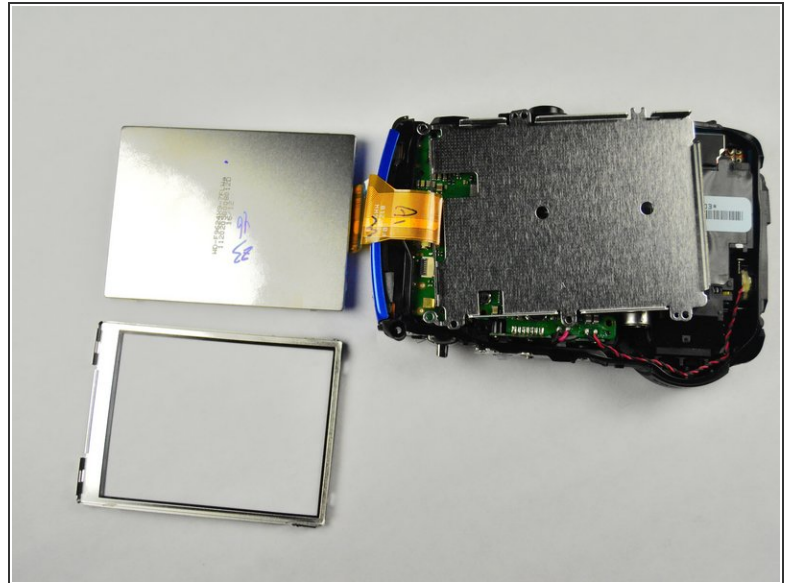
- Using Phillips #00 screwdriver, remove seven 3.0 mm screws.
- Remove the remaining five 3.0 mm screws which hold the rear case and the control panel together.
- The rear panel is now free from the camera.

Step 7 — LCD Screen



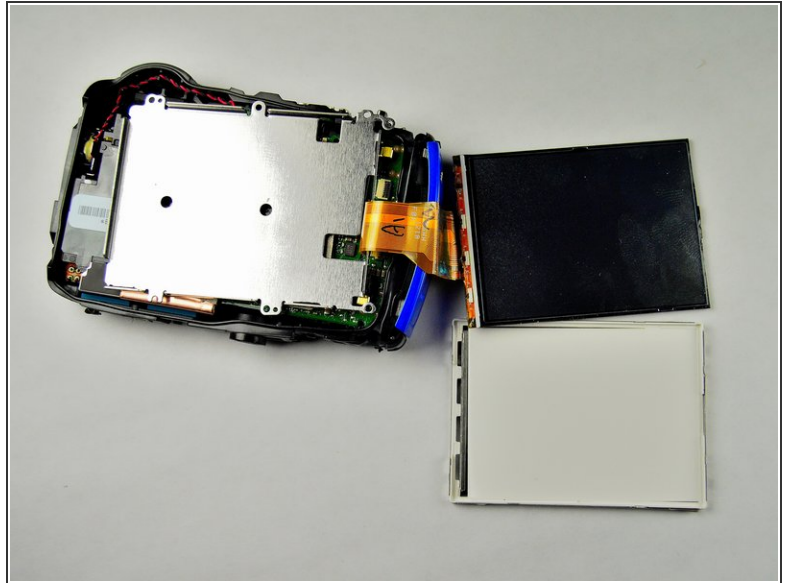
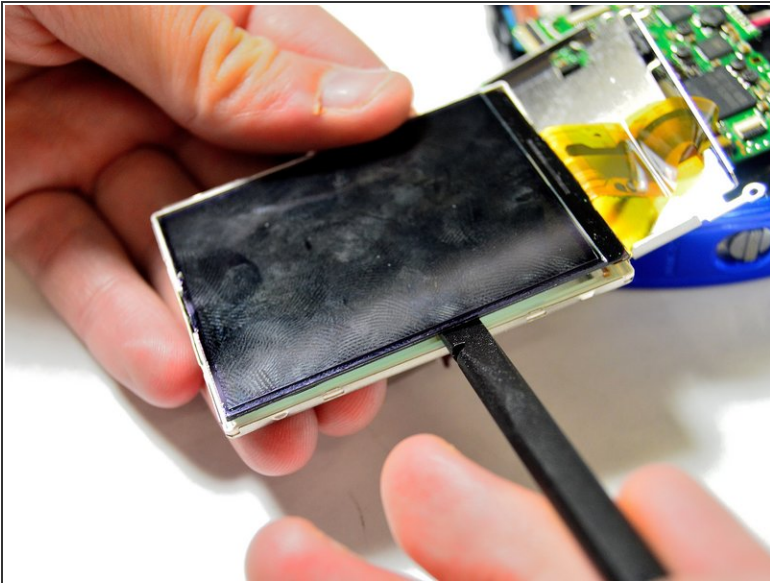
- Take the spudger and wedge it in between the screen and the frame.
- Slowly make your way around the screen with the spudger just enough to separate the screen from the frame.

Step 8



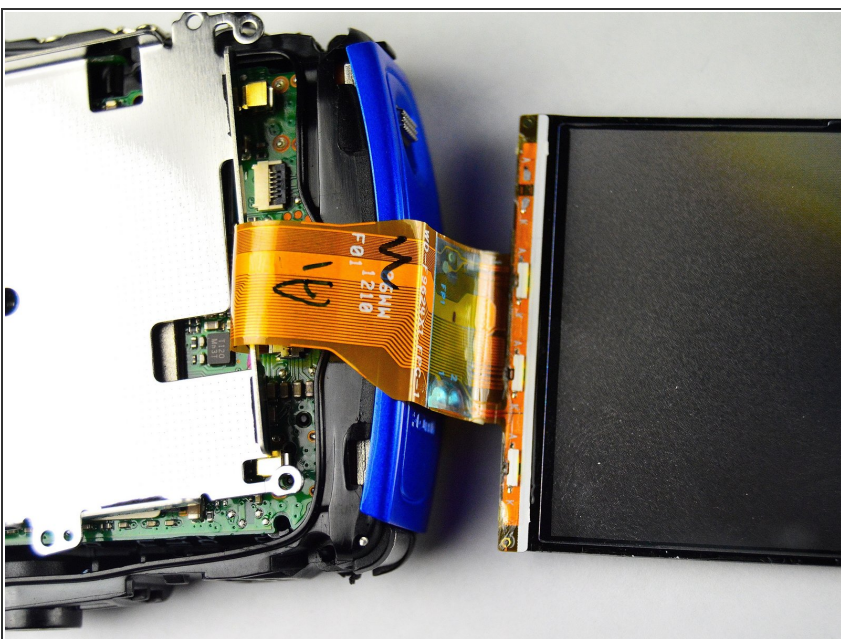
- Take the spudger again and wedge it in the thinner frame to pry the LCD screen from the frame.
- Make your way around with the spudger just enough to separate the screen and frame once again.

Step 9



- Take the spudger and wedge it very carefully between the LCD screen and the very thin and fragile frame.
- ⚠ Very carefully make your way around the frame with the spudger, while making sure not to use too much force. Otherwise the screen will be damaged.

Step 10



- Detach the LCD screen from the motherboard by detaching the orange ribbon.

To reassemble your device, follow these instructions in reverse order.