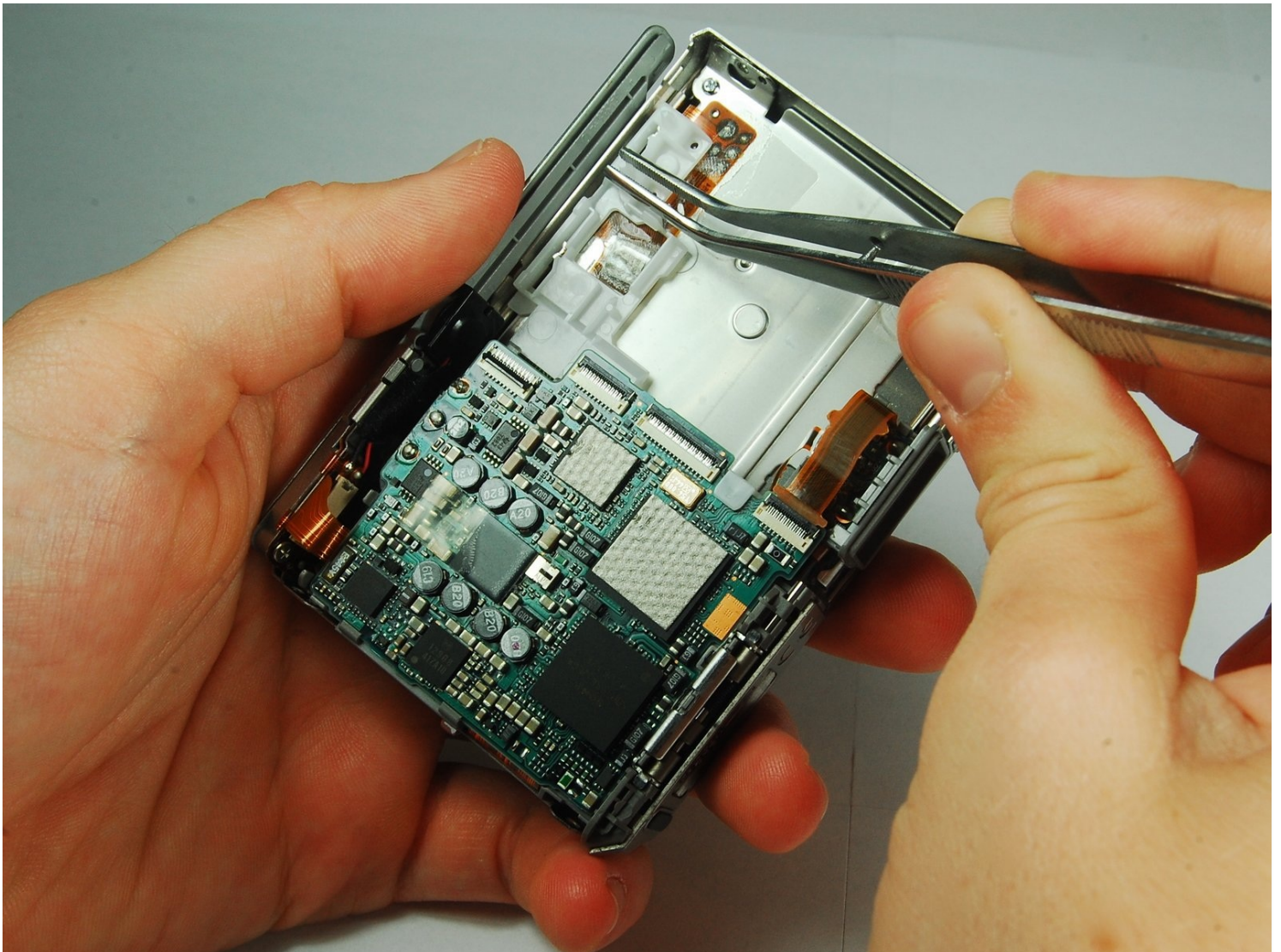




Sony Cyber-shot DSC-T1 Motherboard Assembly Replacement

This guide gives step-by-step instructions on...

Written By: iDeleted



INTRODUCTION

This guide gives step-by-step instructions on getting to the main internal component of the Cyber-shot DSC-T1 and then specifies how to detach them from the camera.

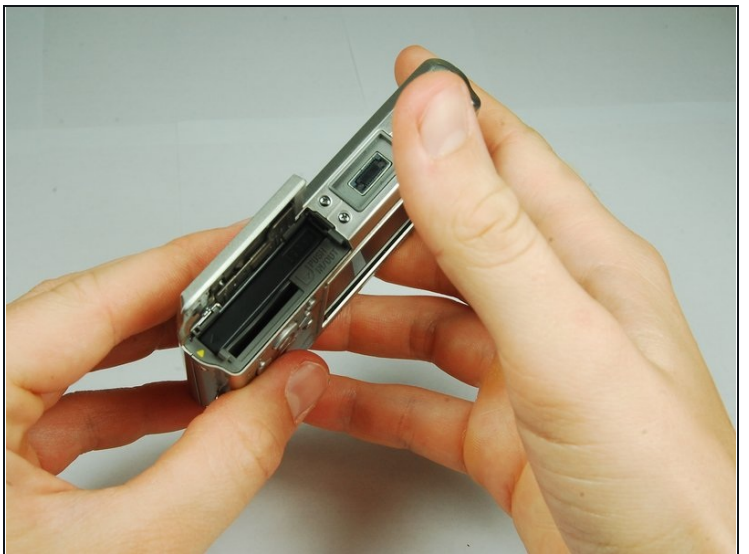
TOOLS:

Phillips #00 Screwdriver (1)

Spudger (1)

Tweezers (1)

Step 1 — Battery



- Locate the battery door at the bottom of the camera.
- Press down on the door and slide it back. The door will pop open.

Step 2



- Remove the battery from the door that you opened in the previous step.

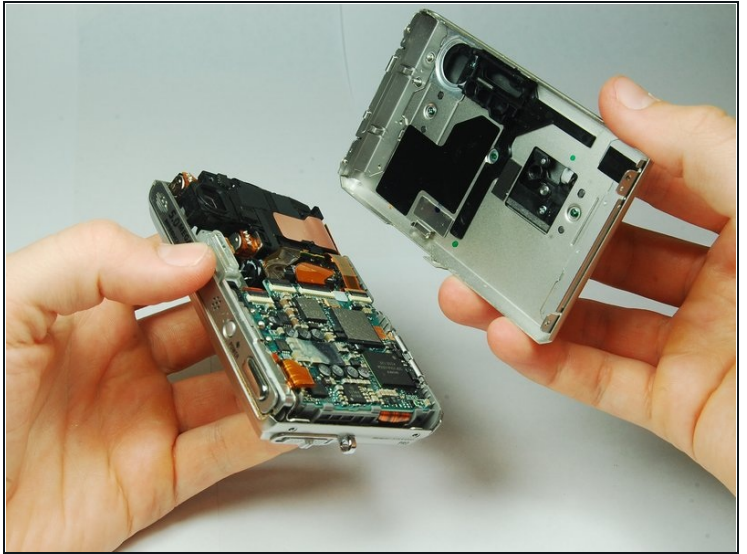
Step 3 — Disassembling Sony Cyber-shot DSC-T1 Removing Front Cover



① There are two screws on the left and right sides of the camera, and two screws on the bottom.

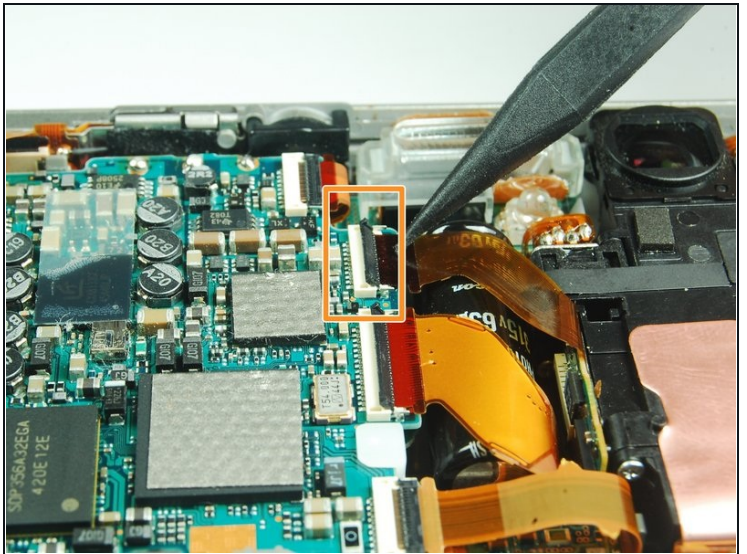
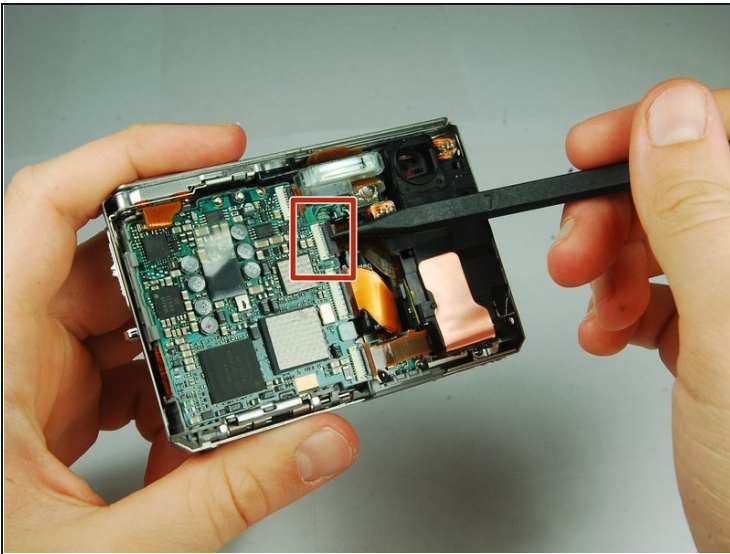
- Use a PH00 screwdriver and remove the six 2.9mm screws.

Step 4



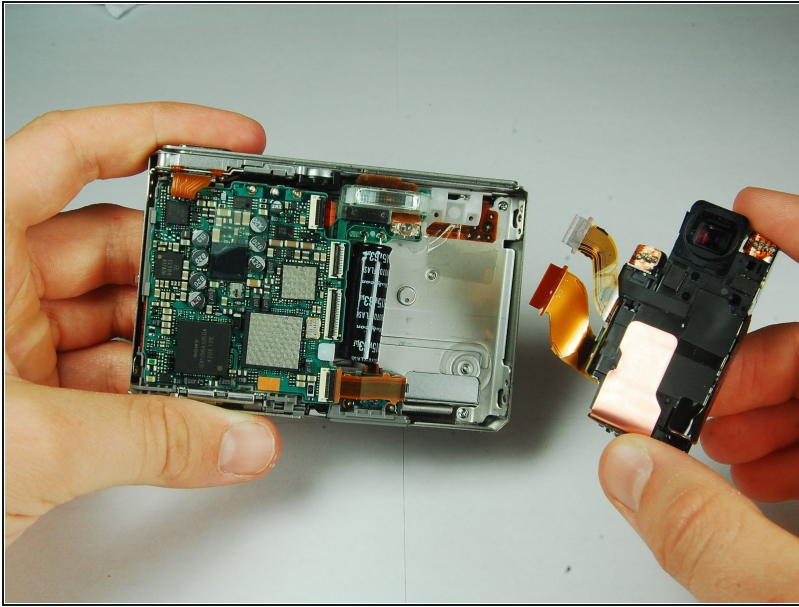
- Use hands to gently pry the front casing away from the camera.

Step 5 — CCD Sensor Module



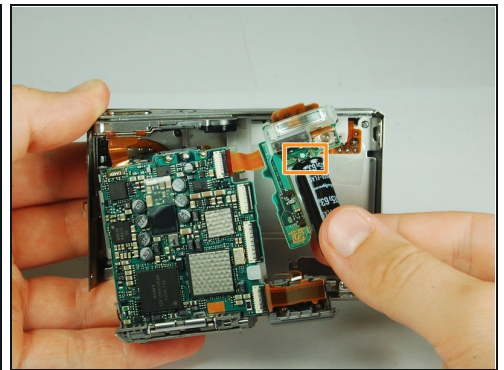
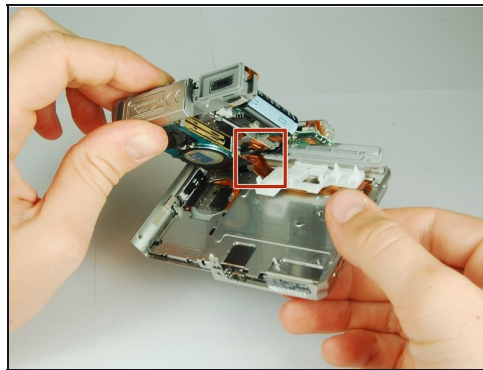
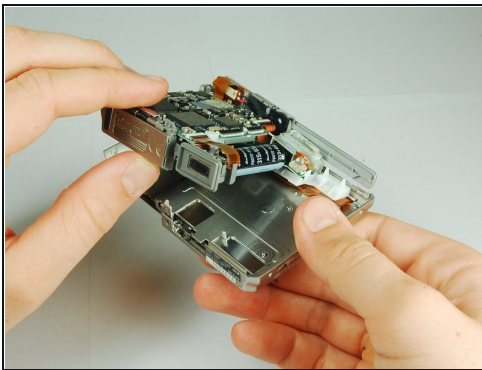
- Use the tip of a spudger to flip up the tab on the ZIF connector securing the motherboard ribbon cable.
- The second picture shows what these tabs look like in their open positions.

Step 6



- Grasp the CCD Sensor Module and remove it.

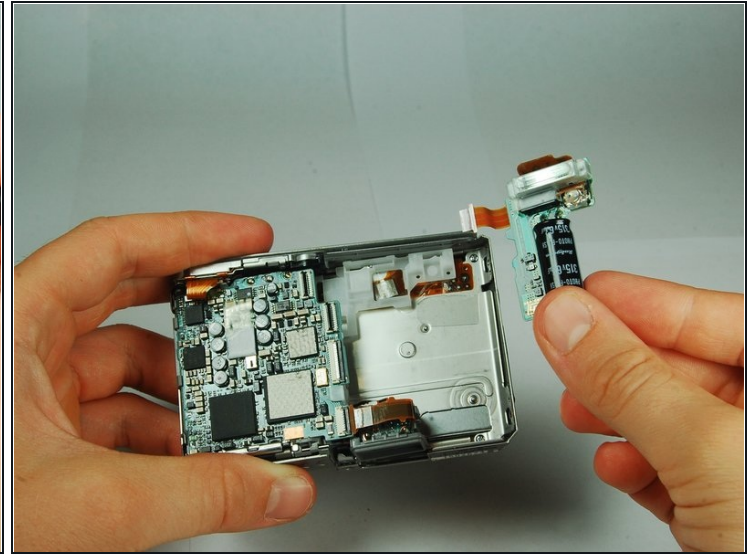
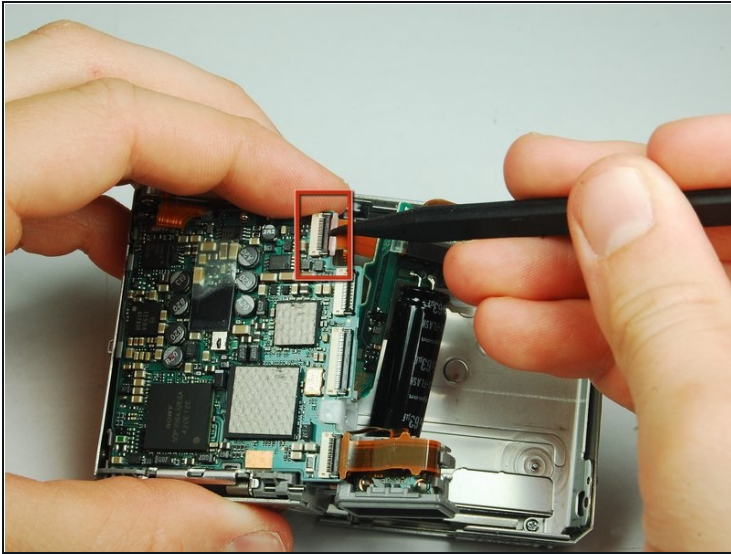
Step 7 — Flash Module



⚠ This camera houses a very strong capacitor (the black cylinder). Avoid touching anything around the two wires coming out of the top. Doing so will risk serious electric shock.

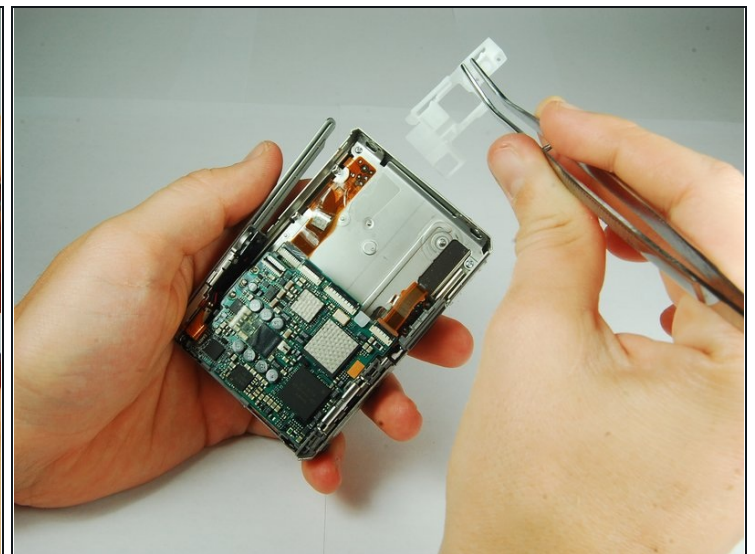
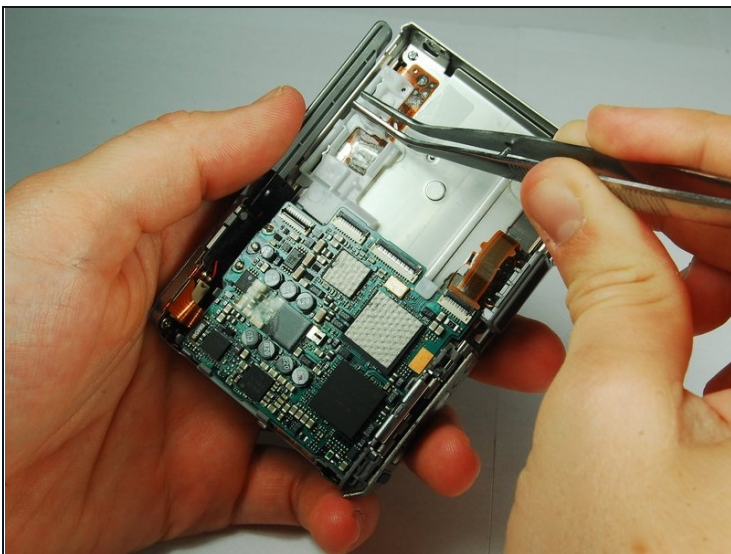
- Carefully disengage the internal components from the casing by lifting at the bottom end and giving a gentle tug.
- The components are still connected to the casing via cables, but they are much more maneuverable.
- The flash module is shown on the right hand side.

Step 8



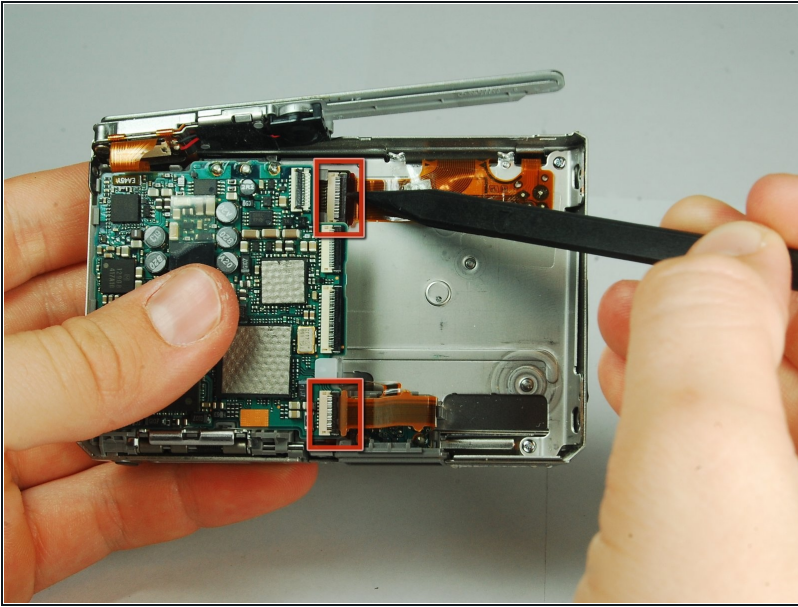
- Use the tip of a spudger to flip up the tab on the ZIF connector securing the motherboard ribbon cable.
- Grasp the flash module by the bottom and remove it.

Step 9 — Motherboard Assembly



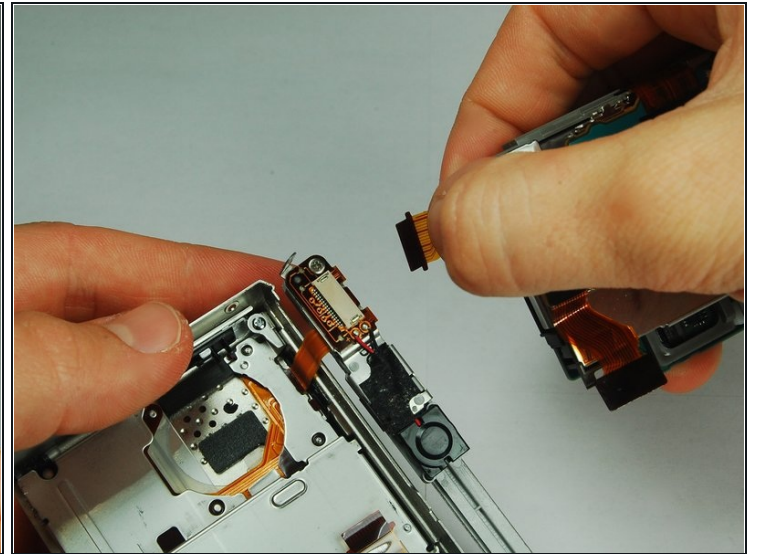
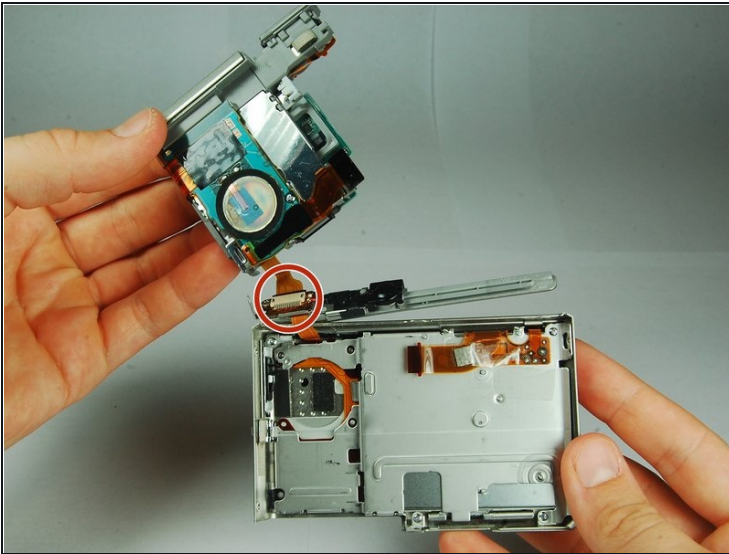
- Use [tweezers](#) to slide the white piece on the back of the back cover to the right.
- This will dislodge the white piece, allowing you to remove it from the back cover.

Step 10



- Use the tip of a spudger to flip up the tab on the ZIF connector securing the motherboard ribbon cable.
- Remove the ribbon cables from these two ZIF connectors.

Step 11



- Lift the motherboard assembly up and rotate it so you can easily see where the internals connect to the back cover.
- Remove the ZIF connectors from the clamp on the left end of the top piece.
- The motherboard assembly is now separated from the back cover.

To reassemble your device, follow these instructions in reverse order.