



Ematic Genesis Battery Replacement

This guide will help in safely accessing and...

Written By: Justin Rohrman



INTRODUCTION

This guide will help in safely accessing and replacing the battery in the Ematic Genesis tablet.

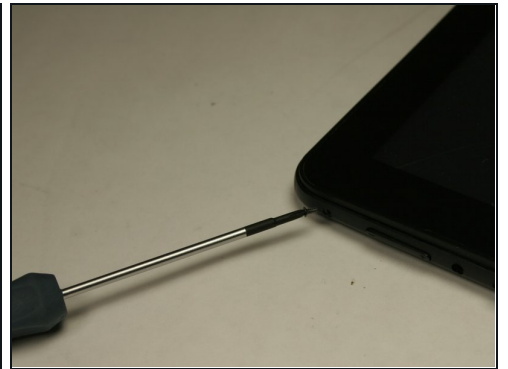
TOOLS:

[iFixit Opening Tool](#) (1)

[Plastic Cards](#) (1)

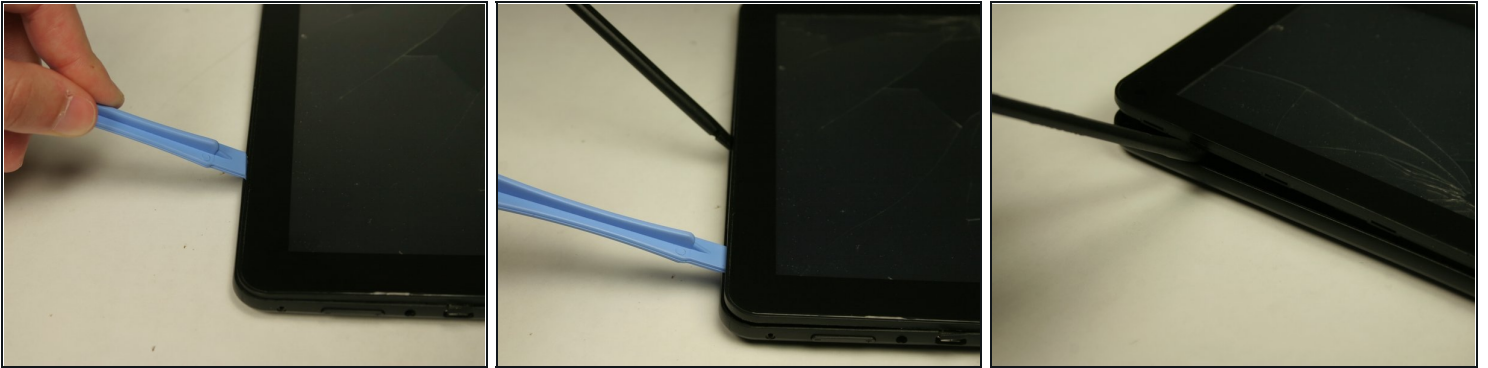
[Phillips #00 Screwdriver](#) (1)

Step 1 — Ematic Genesis Casing



- Unscrew the two (2) 1.3mm Phillips #00 screws found on the bottom edge of the tablet, where the power and volume buttons are located.

Step 2



- Insert plastic opening tool into the edge between the screen plate and the back plate to create a separation between the casings.
- Insert the flat end of the spudger next to the plastic opening tool and carefully pry the edges apart. Continue this all around the edges until the casings separate.
- ⓘ There may be cracking sounds when prying them apart. If carefully done, this is only the locks coming apart and is not harmful.

⚠ Be careful when separating the two plates as they are connected by the speaker wires and could be disconnected during this process.

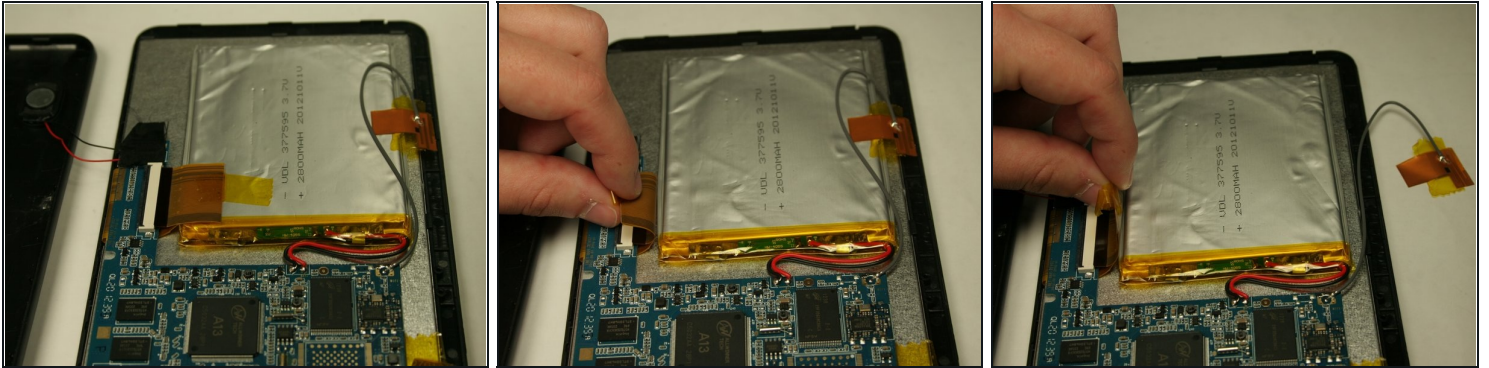
Step 3



- Remove back plate from screen plate and lay both down flat next to each other.

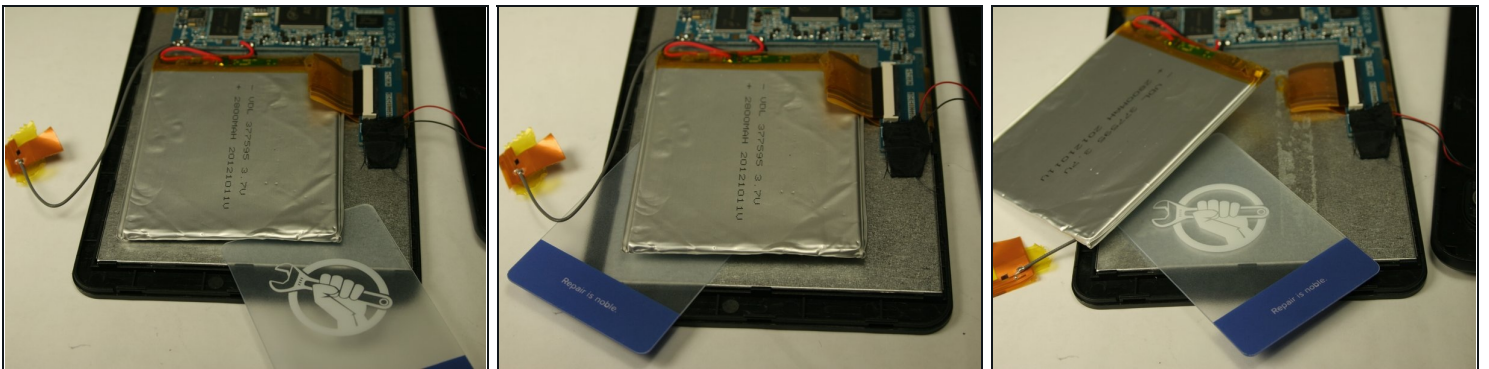
⚠ Be careful when separating the two plates as they are connected by the speaker wires and could be disconnected during this process.

Step 4 — Battery



- Lift up the two pieces of tape holding the copper plate and the connector ribbon to the battery. Gently hold or place away from the battery.

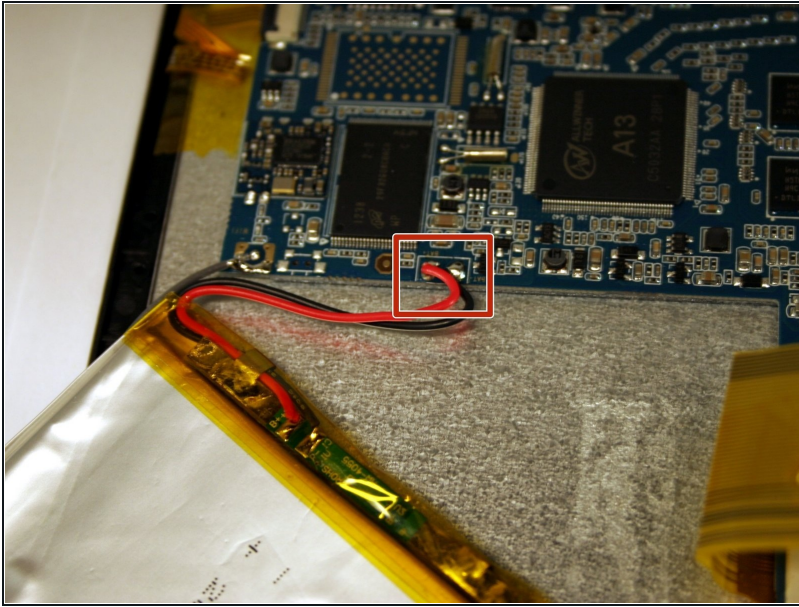
Step 5



- Using a [plastic card](#), gently break the adhesive that holds the battery to the metal screen plate.

⚠ The battery is very bendable. Although it may not be working, there are still dangerous contents inside batteries.

Step 6



- If replacing the battery, disconnect the wires that connect the battery to the motherboard.
- If not replacing the battery, do NOT disconnect the wires.
- ⓘ To reconnect the new battery, a soldering kit will be necessary. Use the iFixit soldering guide to gain further information on how to complete this step.
- [How To Solder and Desolder Connections](#)

To reassemble your device, follow these instructions in reverse order.