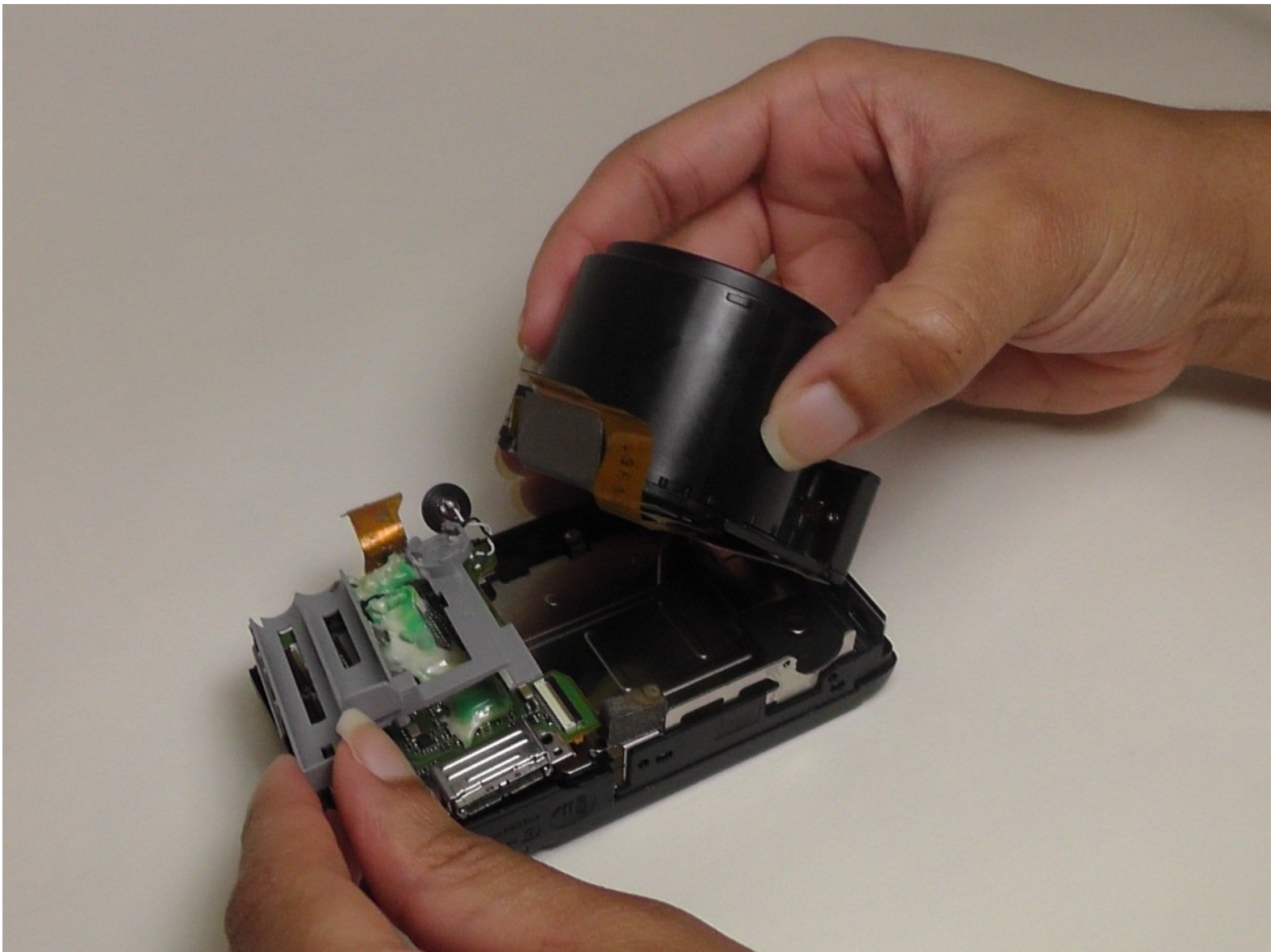




Sony Cyber-shot DSC-H20 Lens Assembly Replacement

This guide provides a step-by-step process of how to replace the lens of this camera with a new one.

Written By: Rachel Payne





TOOLS:

- [Essential Electronics Toolkit](#) (1)
-

Step 1 — Lens Assembly



- Slide open the battery cover and remove the battery and the Memory Stick Duo.
- Return the battery cover to its closed position.

Step 2



- Remove all three screws from the bottom of the camera.

Step 3



- Remove the screws on the left and right sides of the camera.

Step 4



- Press down on the flash cover to raise the flash.
- Remove both screws that hold the flash cover to the body of the camera.

Step 5



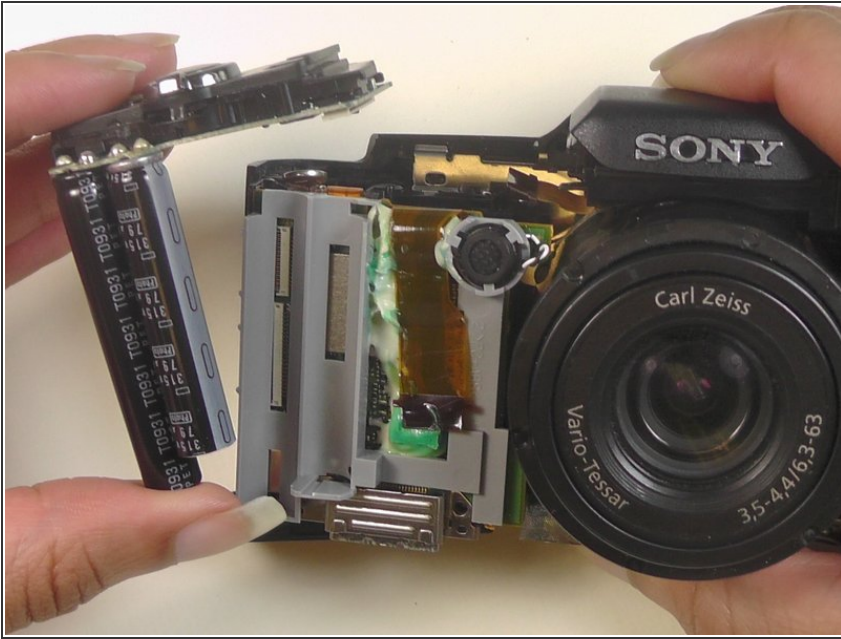
- Place the camera upside down with the battery port positioned upward and the battery port open.

Step 6



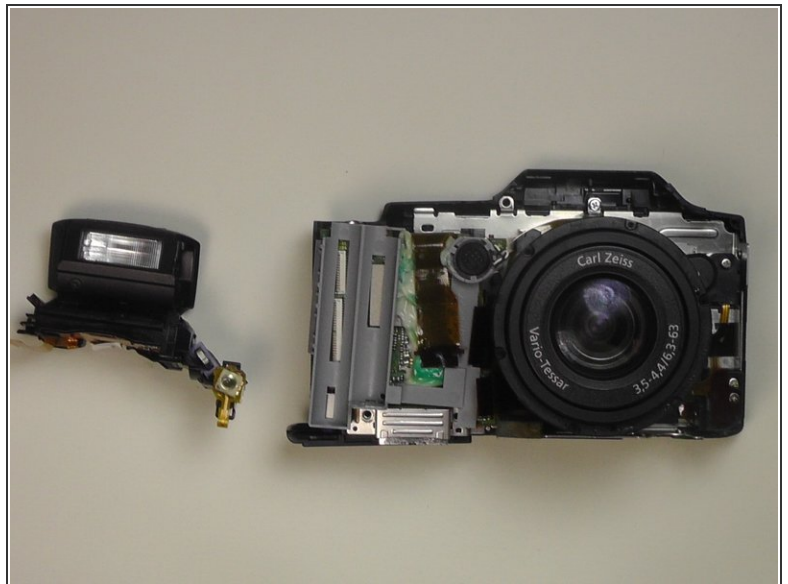
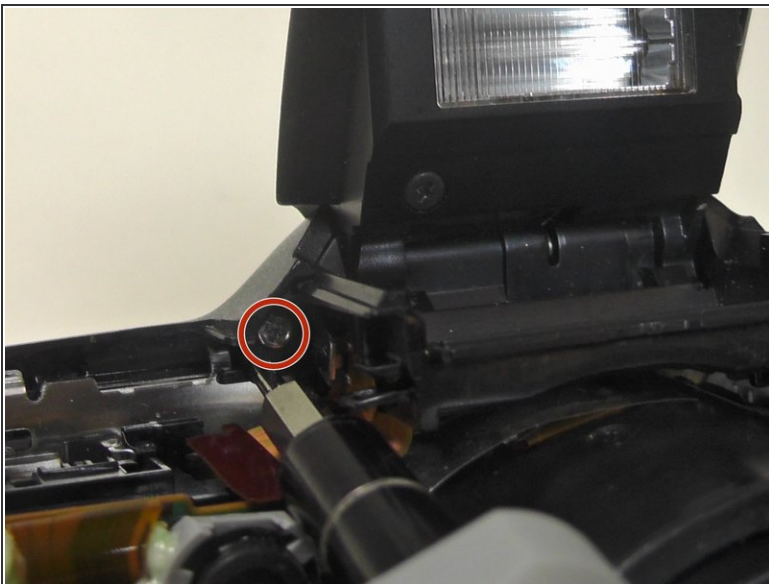
- Pry the front cover of the camera off with the plastic opening tool.

Step 7



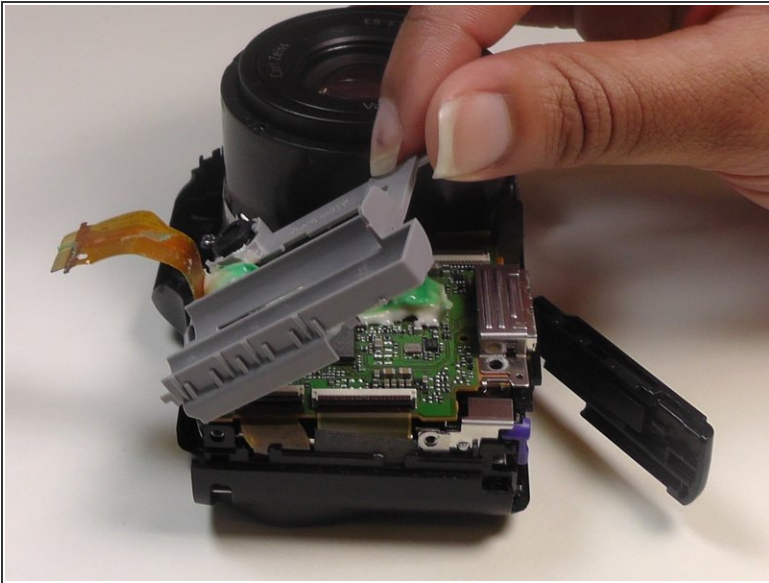
- Remove the power shutter unit

Step 8



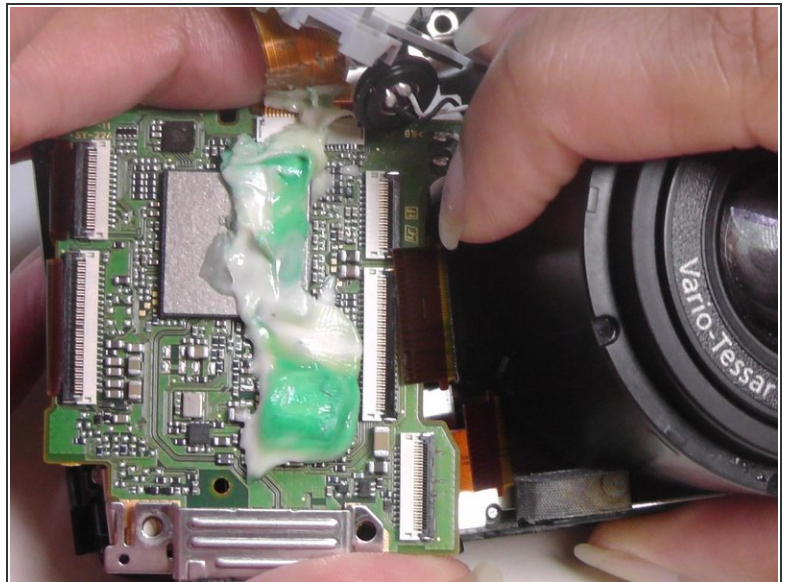
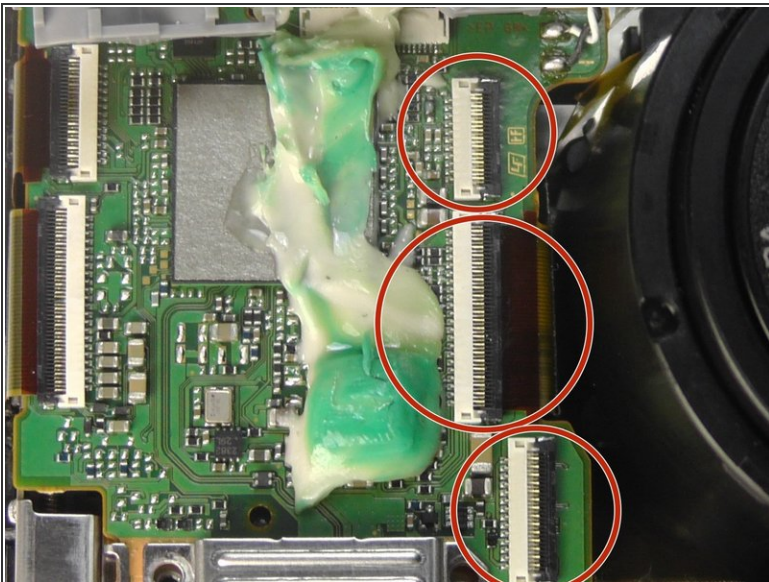
- Unscrew the screw located at the back left corner of the flash component.
- Set the flash component aside.

Step 9



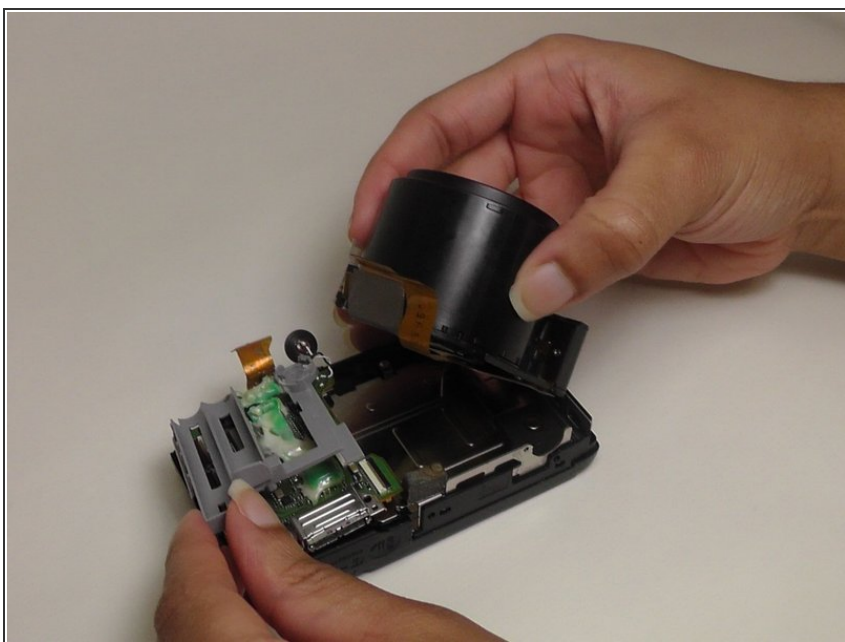
- Lift up the gray plastic facing in order to uncover the motherboard and the ribbon cable ports.

Step 10



- Carefully flip up the three black clasps holding the lens cables to the motherboard.
- Slide the cables from the ports.

Step 11



- Lift the lens and attached ribbon cables from the camera in order to switch this lens with a new one.

To reassemble your device, follow these instructions in reverse order.