



Hisense Sero 8 Charging Port Replacement

After extended use, the charging port may be...

Written By: Keanu



INTRODUCTION

After extended use, the charging port may be worn down. If the device will not power on after charging, the charging port may be defective.

TOOLS:

[Phillips #00 Screwdriver](#) (1)

[Spudger](#) (1)

[iFixit Opening Tool](#) (1)

[Tweezers](#) (1)

Step 1 — Charging Port



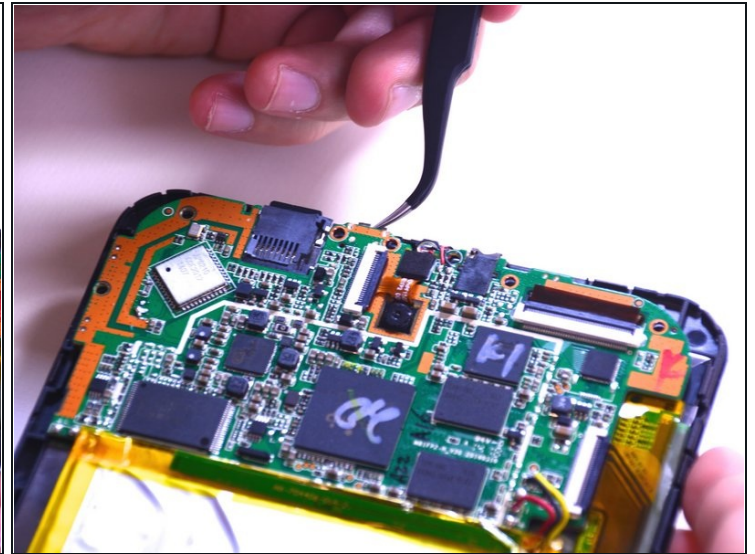
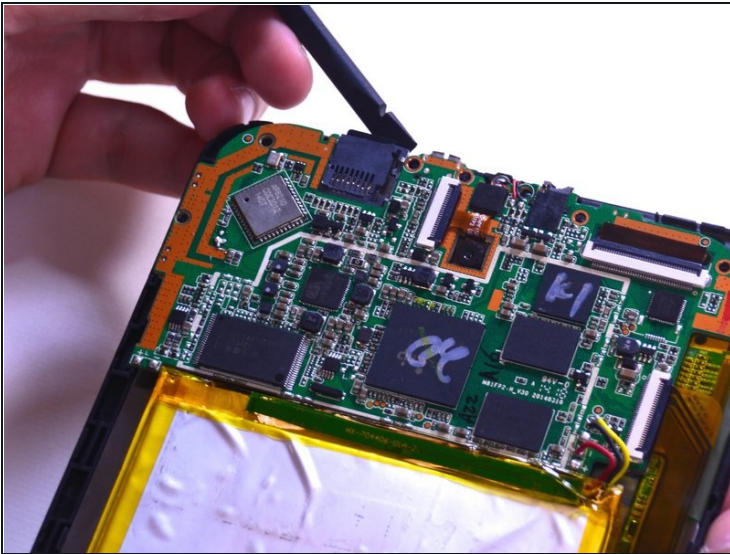
- Remove the back cover of the device using a combination of both plastic opening tools.
- Use your plastic opening tool pry open a corner of the device, then continue down the side of the device with the tool to completely open the device.

Step 2



- Remove seven of the 4.43mm screws using the Philips #00 screwdriver.
- ⓘ It is not necessary to remove the bottom two 4.43mm screws that keep the speakers in place.

Step 3



- Gently lift the motherboard up to extract the charging port out with the [tweezers](#).

⚠ Be cautious not to disconnect any wires or ribbon cables.

To reassemble your device, follow these instructions in reverse order.