



# RCA ViSYS 25424RE1 Speaker Replacement

Replace a blown speaker on your RCA ViSYS 25424RE1

Written By: Mit Patel



---

## INTRODUCTION

The internal speaker is used only during speaker phone mode. To access speakerphone mode, the button labeled "speakerphone" must be pressed. The speaker is not used while the speakerphone mode is disabled. If you are unable to hear the incoming sound when using the speaker phone mode, your speaker may be malfunctioning. Use this guide to replace the damaged speaker.

---



### TOOLS:

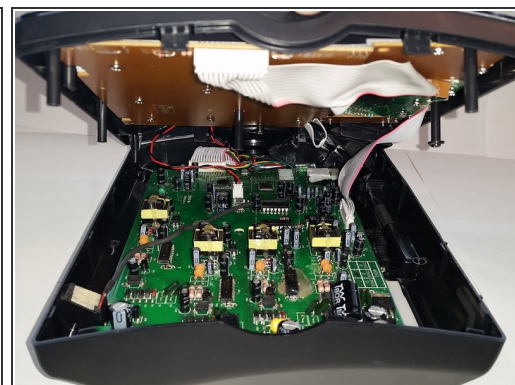
- [Phillips #00 Screwdriver](#) (1)
  - [iFixit Opening Tools](#) (1)
  - [Tweezers](#) (1)
-

## Step 1 — Base



- Remove the eight 11mm screws found on the bottom side of the base with a Phillips #00 screwdriver.

## Step 2

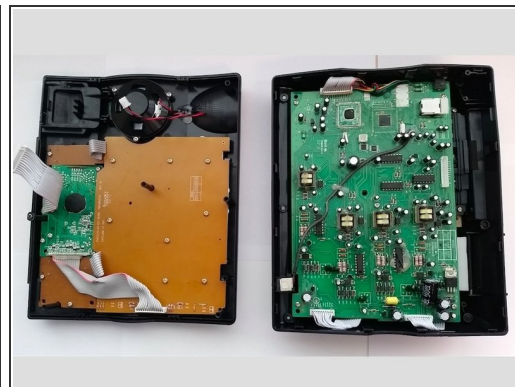
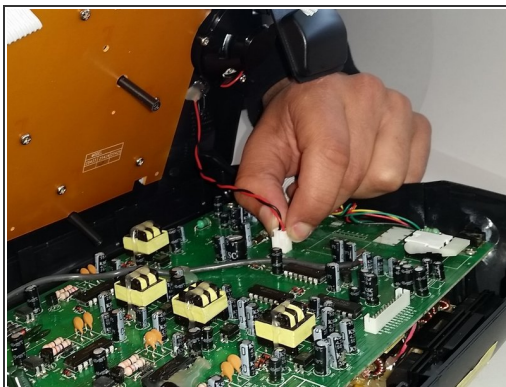
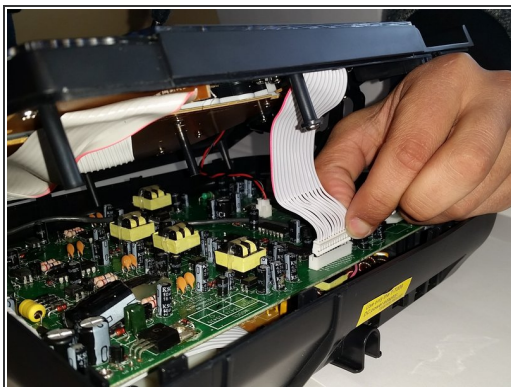


- Use a plastic opening tool to separate the back and front pieces.

⚠ Gently remove the back cover, because the wires are connected to each piece.

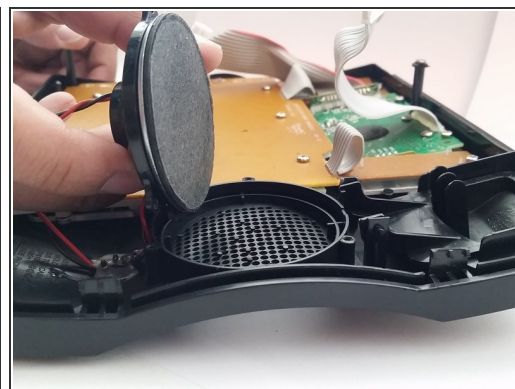
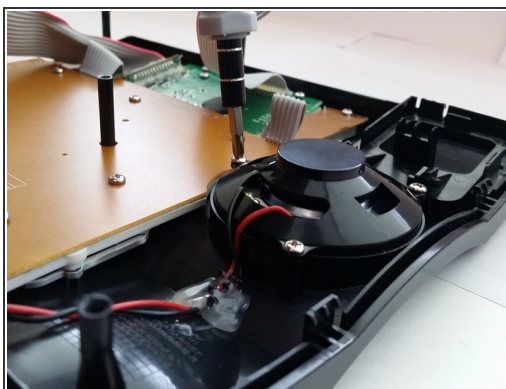


## Step 3



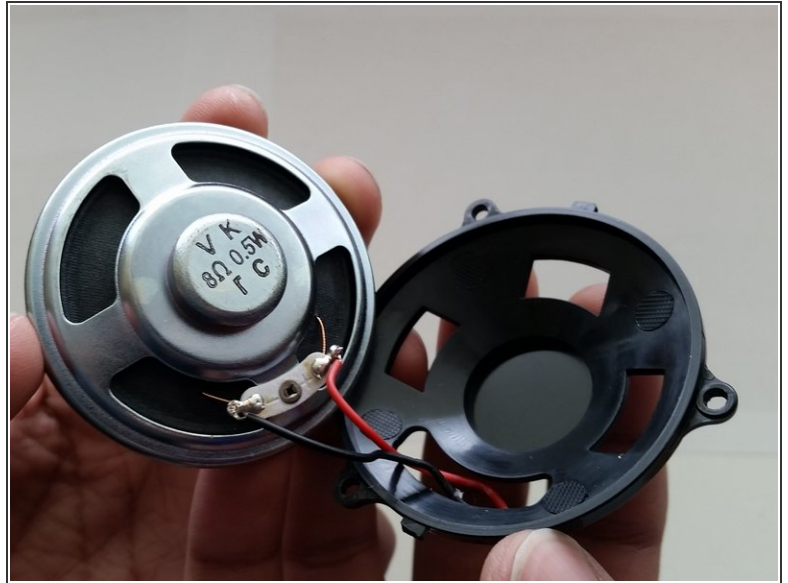
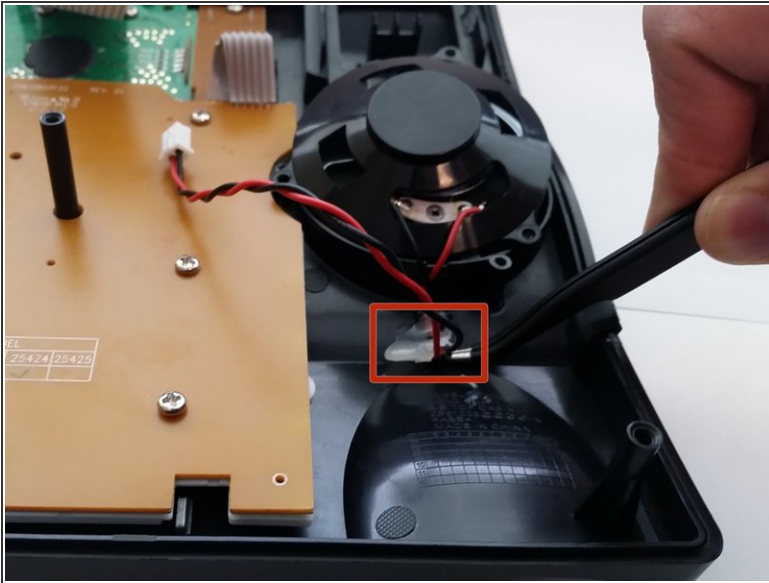
- Unclip the wires that connect the front piece to the circuit board on the back piece.

## Step 4 — Speaker



- Use a Phillips #00 screwdriver to remove the three 11mm screws to separate the speaker from its base.

## Step 5



- Once the screws are taken out, use tweezers to remove the hot glue from the wires.

⚠ Be careful when removing the hot glue to ensure that the wires remain intact.

To reassemble your device, follow these instructions in reverse order.