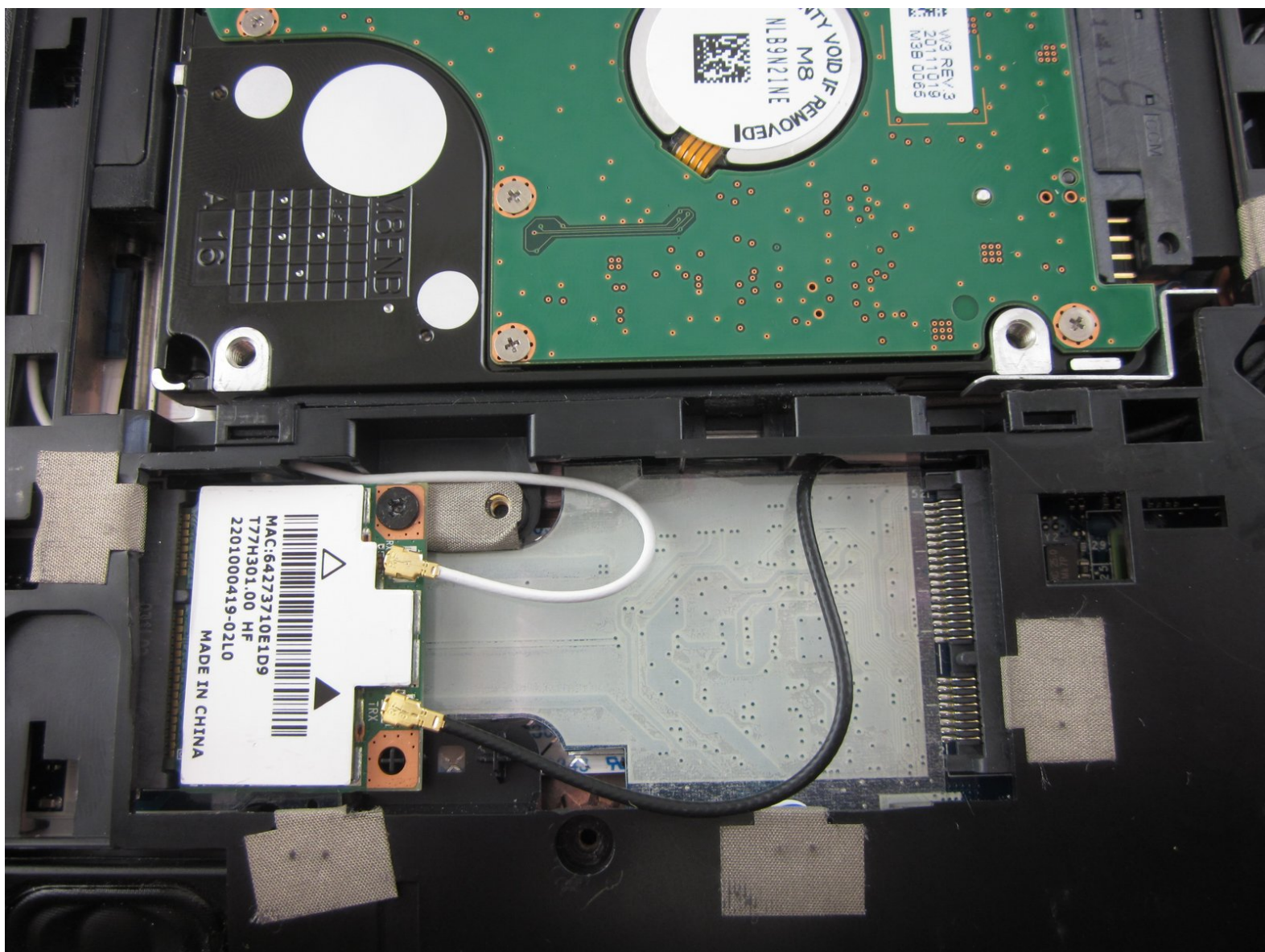




Acer Aspire One P1VE6 WLAN Card Replacement

This guide will show you how to replace a WLAN card.

Written By: Wade Vierheller



INTRODUCTION

This guide will teach you how to remove and replace the WLAN card.



TOOLS:

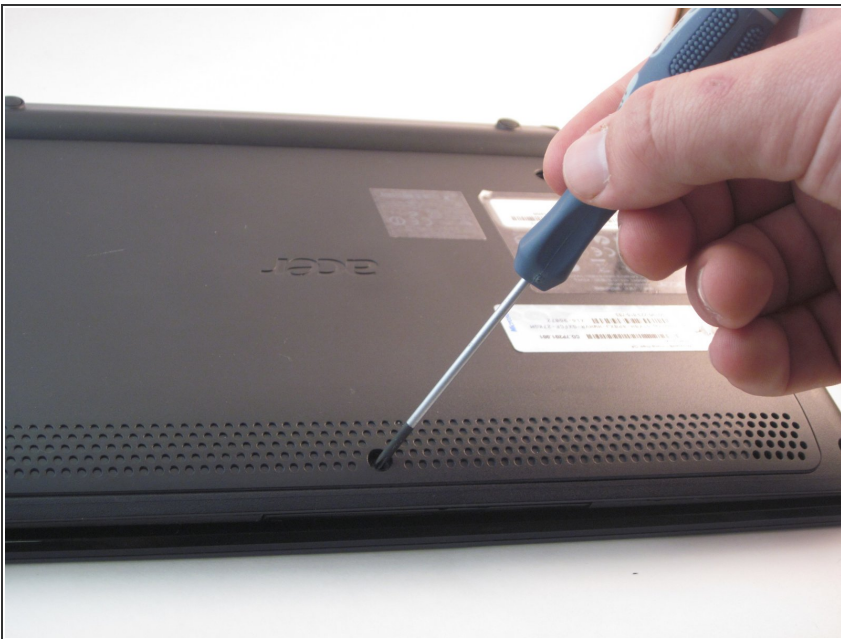
- [Phillips #2 Screwdriver](#) (1)
-

Step 1 — Back Panel



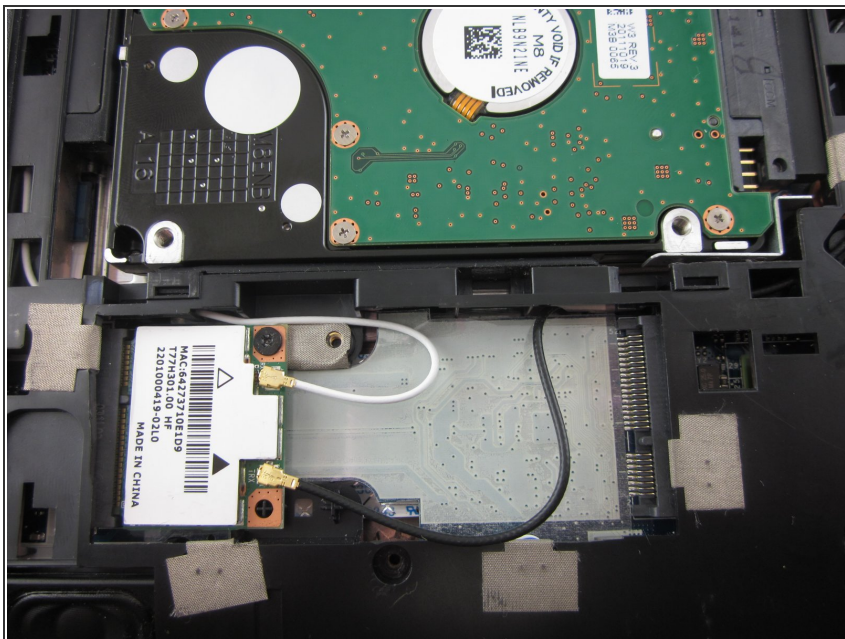
- Close the netbook and turn it over so the back panel faces you.

Step 2



- Locate the 4 mm Phillips #1 screw at the bottom of the back panel. Using the Phillips head screwdriver, remove the screw. Place the screw somewhere it will not be lost. Then remove the back panel by gently sliding it towards the front.

Step 3 — WLAN Card



- Locate the WLAN Card.

Step 4



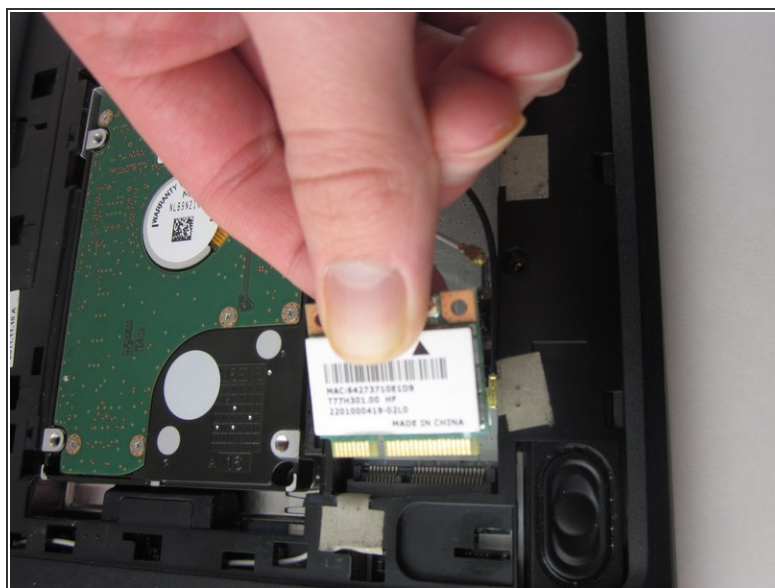
- Unplug the white and black cables connecting the WLAN card.

Step 5



- Remove the 4mm Phillips #1 screw holding the WLAN card holding it in place.

Step 6



- Unplug the card.

To reassemble your device, follow these instructions in reverse order.