



Sony ICF-C1T Speaker Replacement

How to replace a Sony ICF-C1T speaker.

Written By: Megan



INTRODUCTION

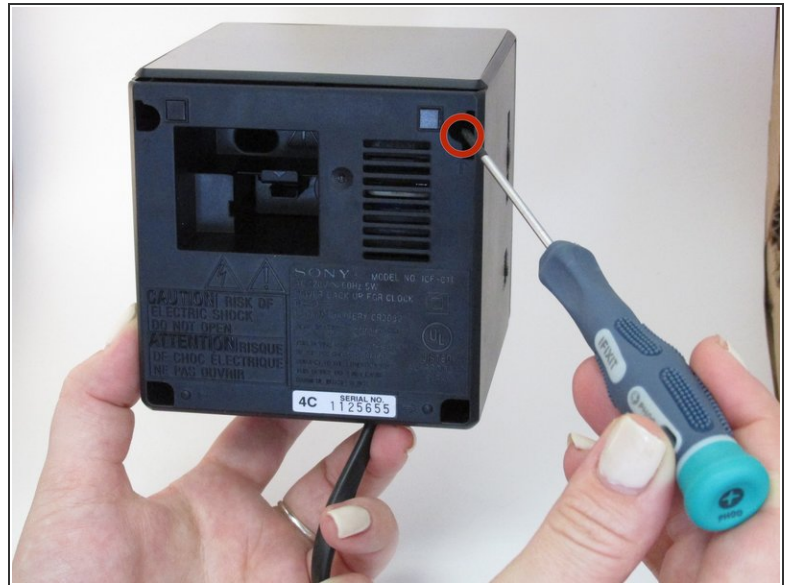
This step-by-step guide will allow you to follow along and replace the faulty speaker of your device.



TOOLS:

- [iFixit Opening Tools](#) (1)
 - [Metal Spudger](#) (1)
 - [Super Glue](#) (1)
 - [Phillips #0 Screwdriver](#) (1)
-

Step 1 — Speaker



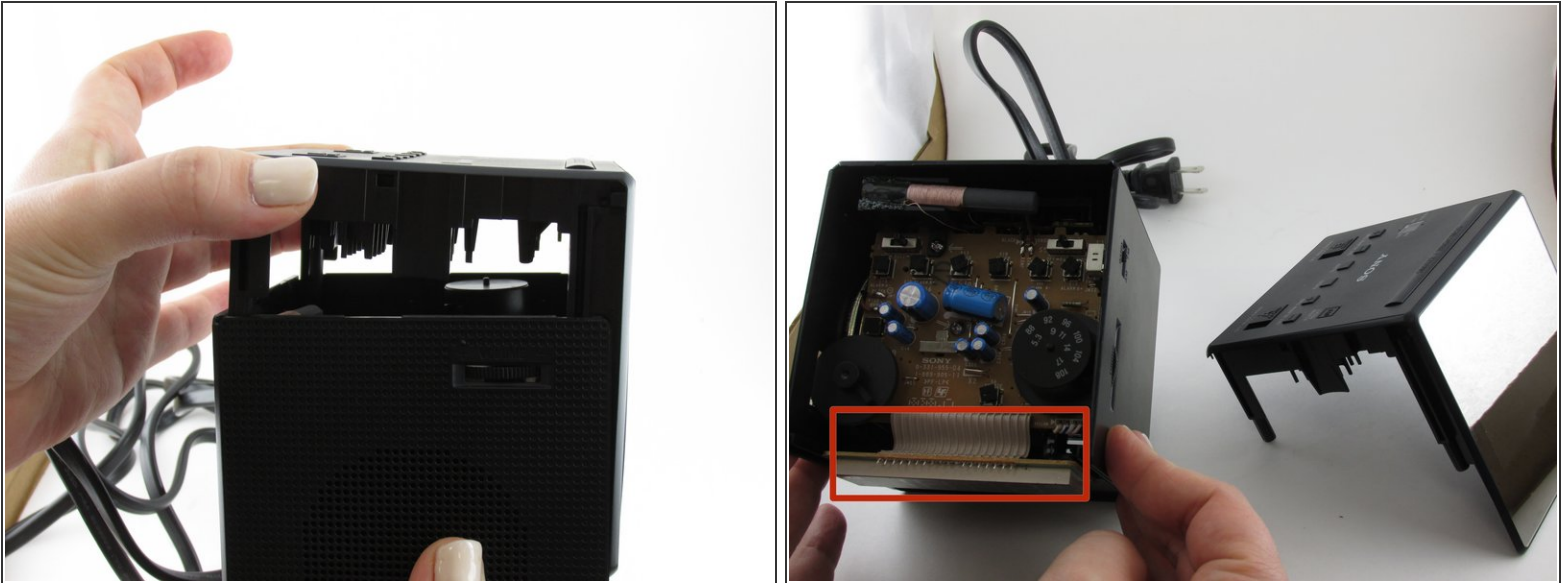
- Using a Phillips #00 screwdriver, remove the four 14mm screws from the underside of the device.
- ⚠ Be sure that the device is unplugged and the battery has been removed before tampering with the device.

Step 2



- Using the opening tool, gently pry the top portion from the side section of your device.

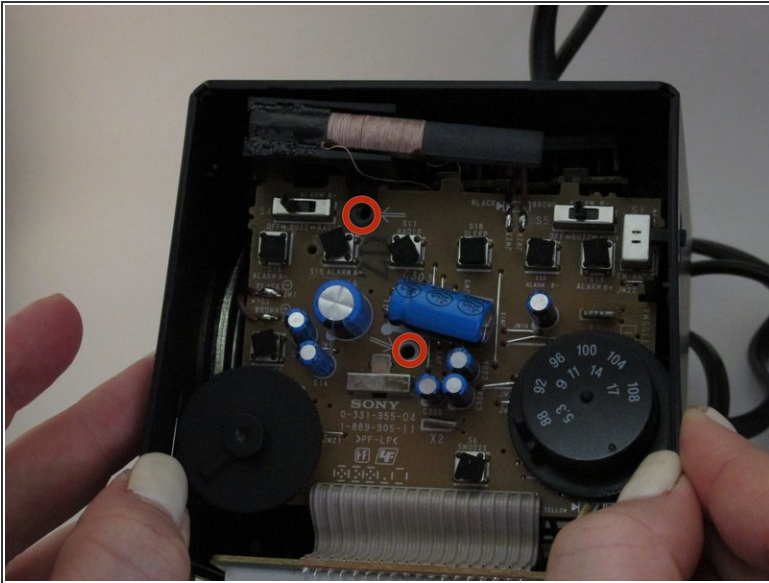
Step 3



- Gently pull the top of the clock away from the rest of the device.

⚠ Be careful when tugging on this piece of the clock. The clock display is located directly inside the front face and is connected by multiple wires.

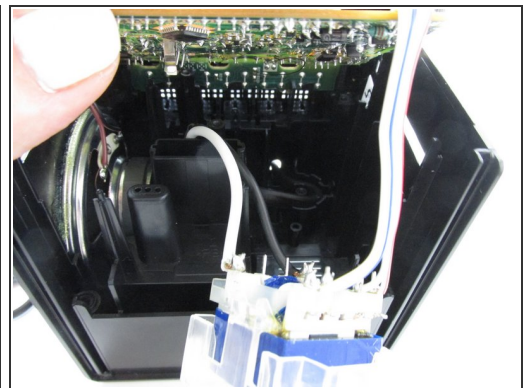
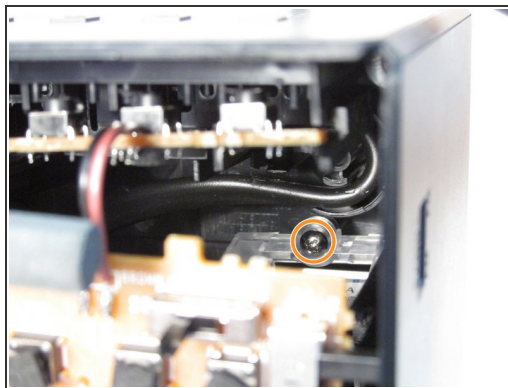
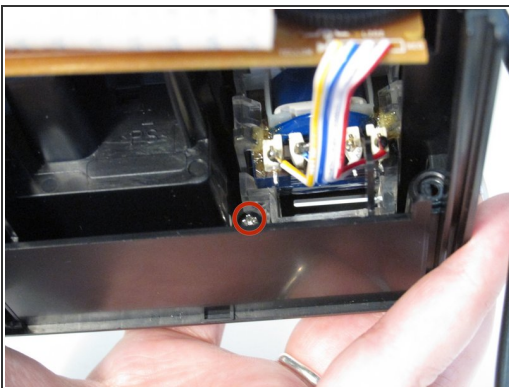
Step 4



- Using the Phillips #00 screwdriver, remove the two 14mm screws from the top of the motherboard.

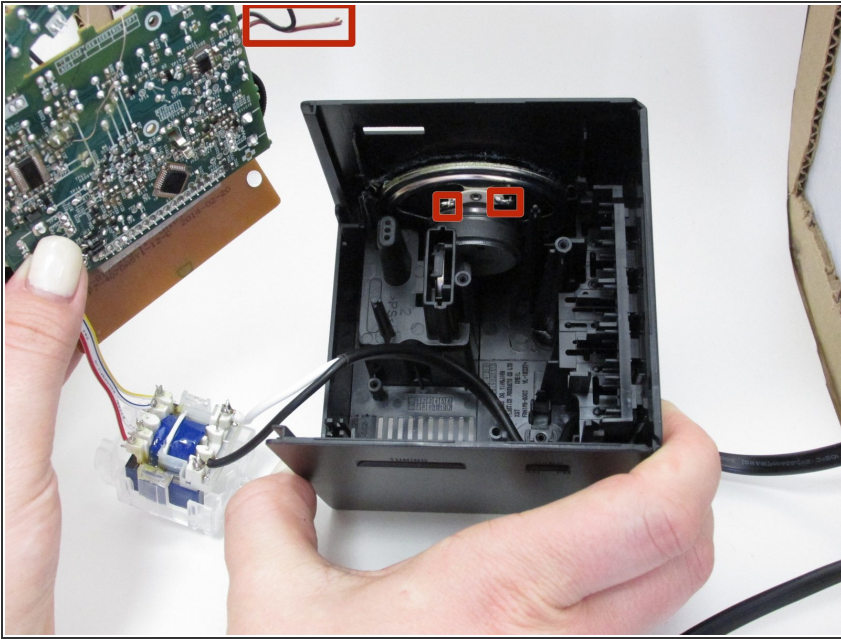
⚠ Be careful to avoid the sharp pieces on the motherboard when handling the device.

Step 5



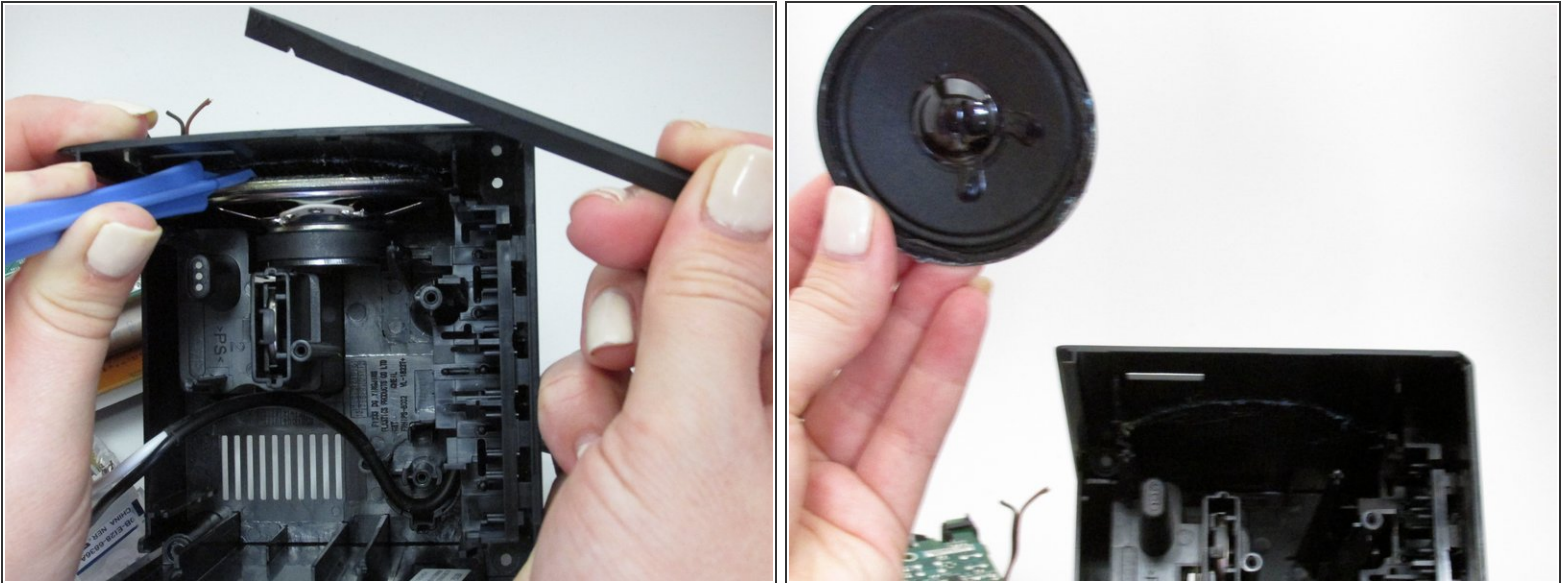
- Remove the Phillips #00 screw from the bottom of the white and blue box.
- Remove the Phillips #00 screw from behind the white and blue box.
- After unscrewing the white box, gently pull it out. This will allow for more room to access the speaker.

Step 6



- To separate the motherboard completely, you can cut the red and black wires that are attached to the speaker. This will allow you to access the speaker fully.
- ⚠ Use caution when tampering with the wires and sharp parts of the device.

Step 7



- Use the plastic opening tool and the spudger to separate the speaker from the device by tracing its outline and loosening the glue.
- ⚠ Do this step gently as to not damage the device or cause harm to yourself.
- ★ When reassembling the device, you will need to use glue to place the new speaker back in its place.
- ℹ It would be wise to test the device after reconnecting wires, before screwing and gluing the parts back together.

To reassemble your device, follow these instructions in reverse order.