



Sony ICF-C1T Volume Dial Replacement

When the device is not up to your hearing standards, this guide will give you advice on how to replace a faulty volume dial.

Written By: amber woolery



INTRODUCTION

If your Sony ICF-C1T is having trouble increasing or decreasing volume, use this guide to replace the volume dial.

The volume dial gauges the volume produced by the Sony ICF-C1T by rolling the dial-up and down. If your system does not change the volume upon moving the dial, the dial may need to be replaced.

Step 3-5 requires separating part of the device, make sure to use caution handling circuitry to ensure that no wires are torn.

Before beginning this guide, make sure to unplug the device and remove any batteries.




TOOLS:

- [iFixit Opening Tools](#) (1)
 - [Phillips #0 Screwdriver](#) (1)
-

Step 1 — Volume Dial



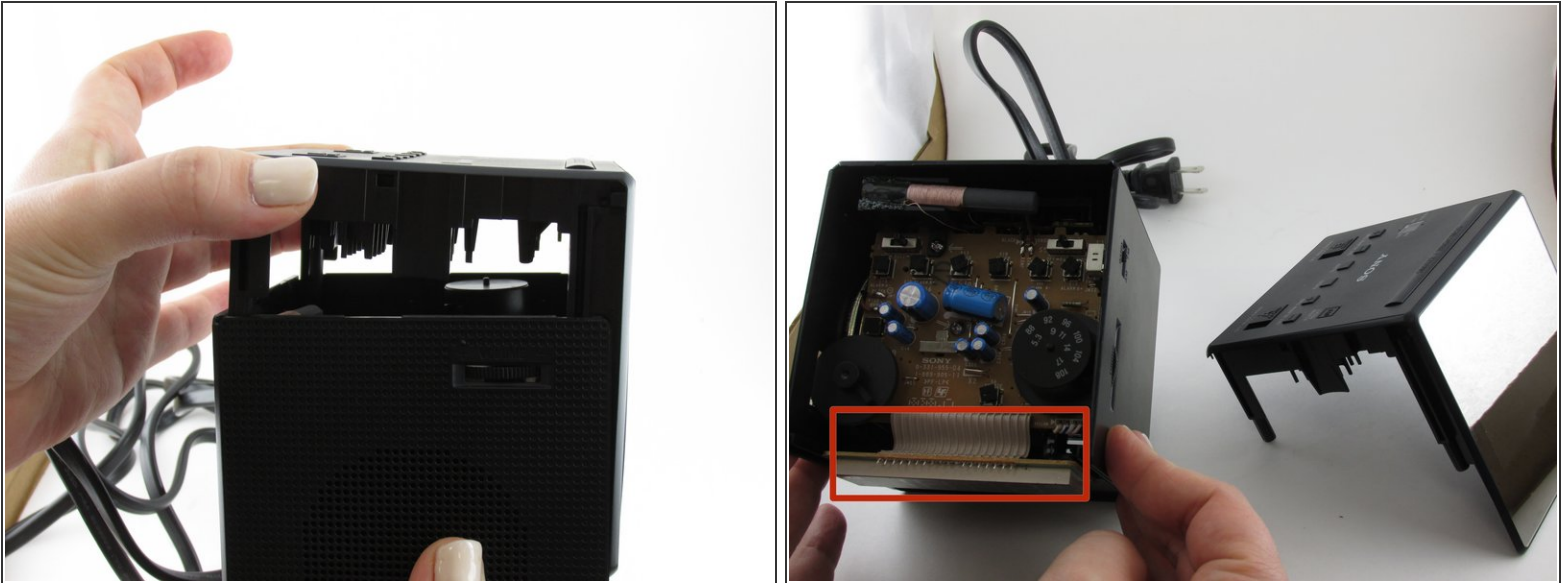
- Remove the 4 (14mm) screws from the underside of the device using the **Philips #0 Screwdriver**.
-  Before beginning this step, make sure the clock is unplugged and the batteries have been removed.

Step 2



- Pry apart the edge of the top and side portions of the device using a flat-headed tool (i.e. flathead screwdriver, card, etc)
- ⓘ It is recommended to use the [iFixit Opening Tools](#) for optimal removal.

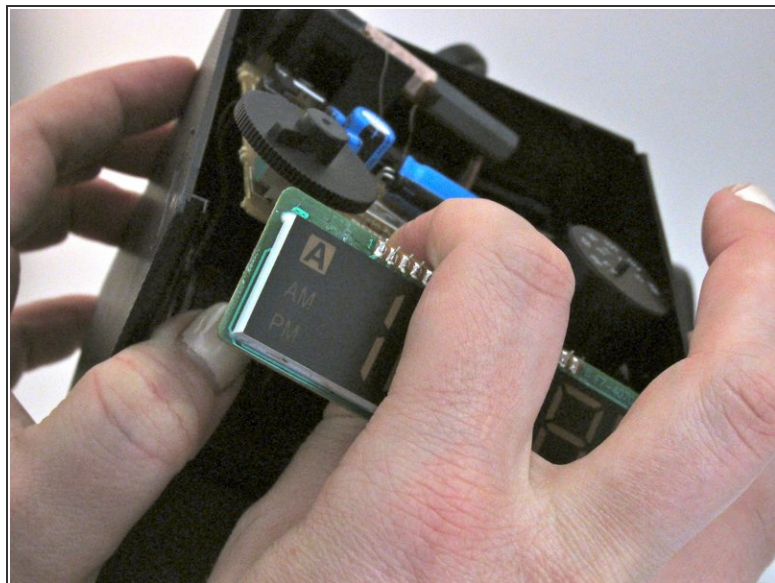
Step 3



- Carefully separate the device by gently pulling up on the top of the clock/radio.

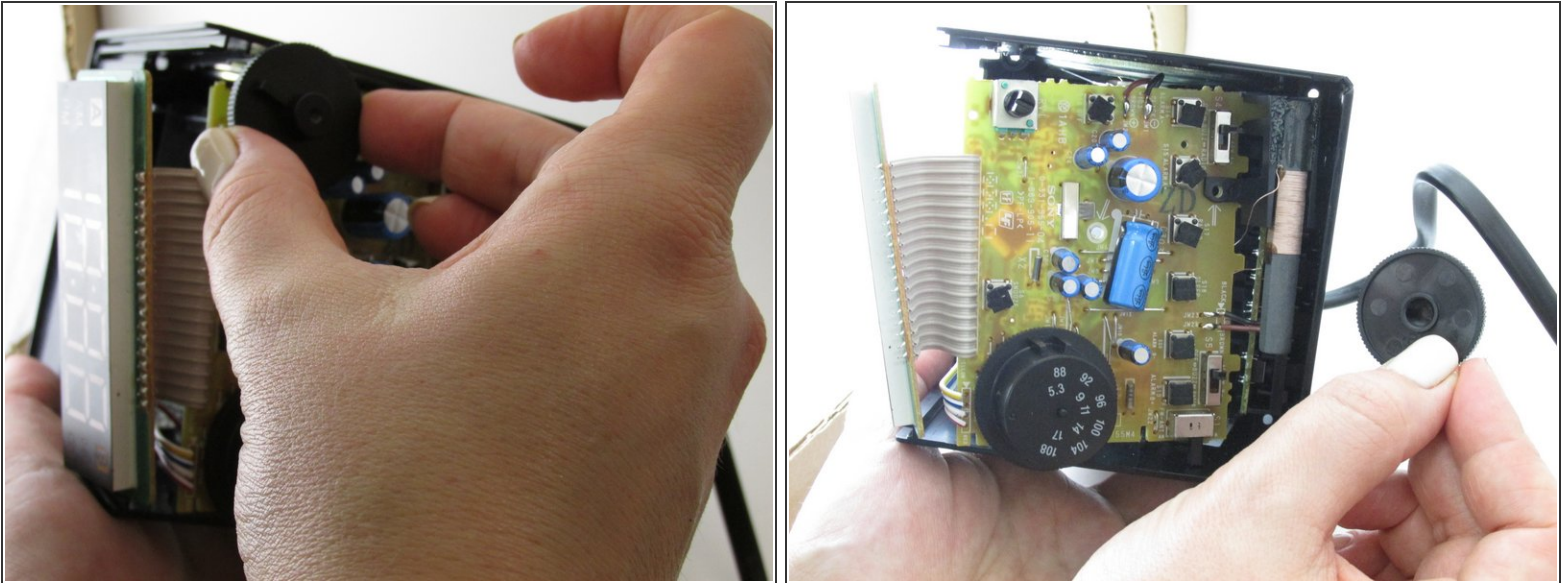
⚠ Use caution when pulling the top of the clock; the clock display is located directly behind the faceplate and still connected by multiple wires.

Step 4



- To remove the motherboard, gently pull apart the sides of the device.
- ⚠ Do not pull hard on the motherboard, as it is still connected by multiple wires inside the device.
- ⚠ Be careful of sharp pieces.
- ℹ It would be helpful, although not necessary, to have someone helping out with this step.

Step 5



- Remove the volume dial by pulling it off the motherboard. This can take a little force to remove.

To reassemble your device, follow these instructions in reverse order.