



Sony Cyber-shot DSC-W690 Battery Replacement

If the camera can not hold a charge, this guide will show you how to install a new battery

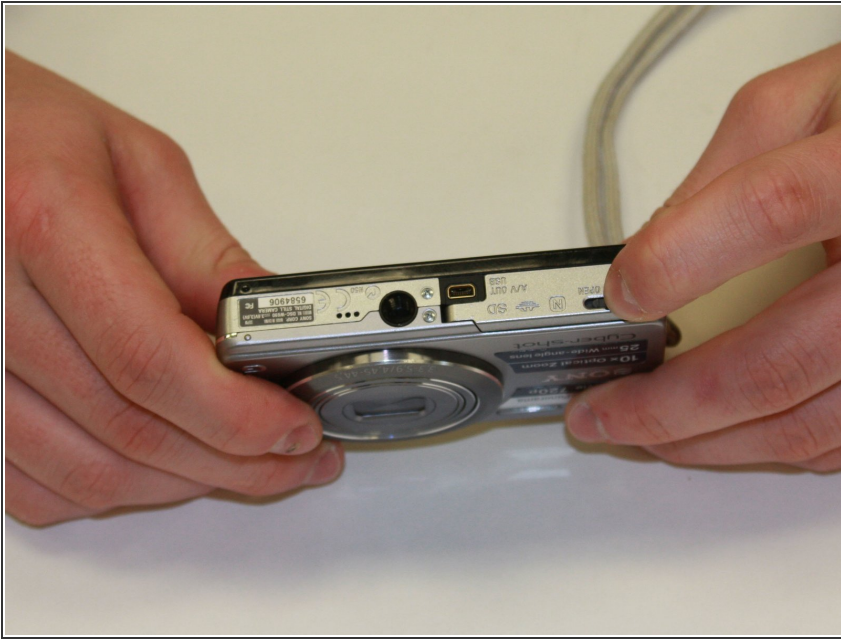
Written By: Jordan Weir



INTRODUCTION

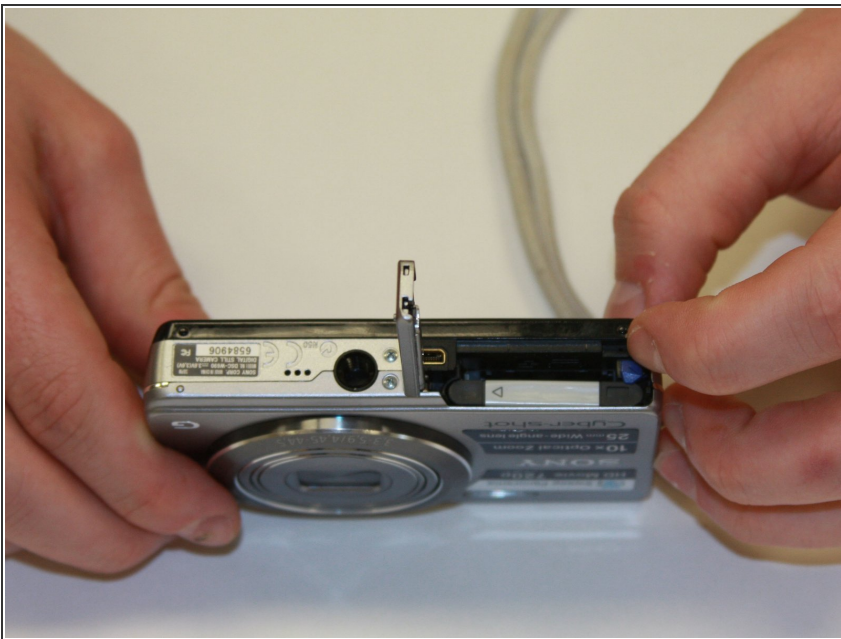
The battery powers the camera and can quickly be replaced. There are no tools required.

Step 1 — Battery



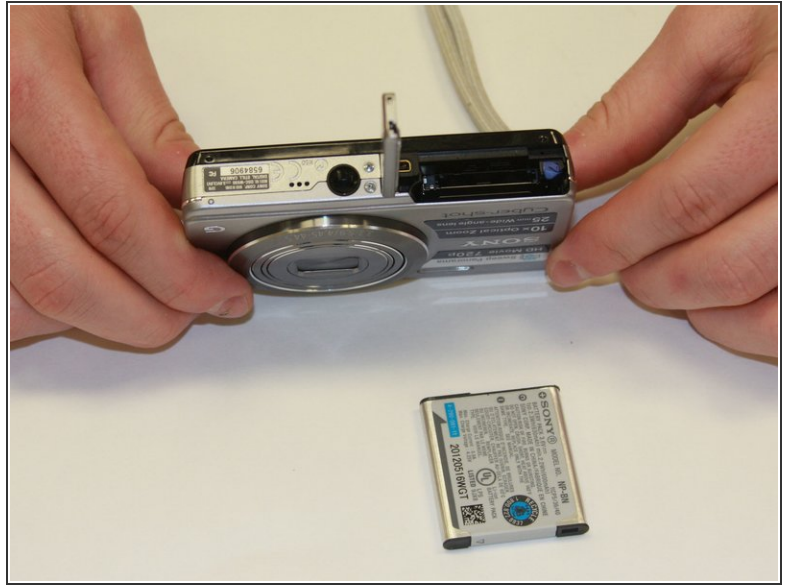
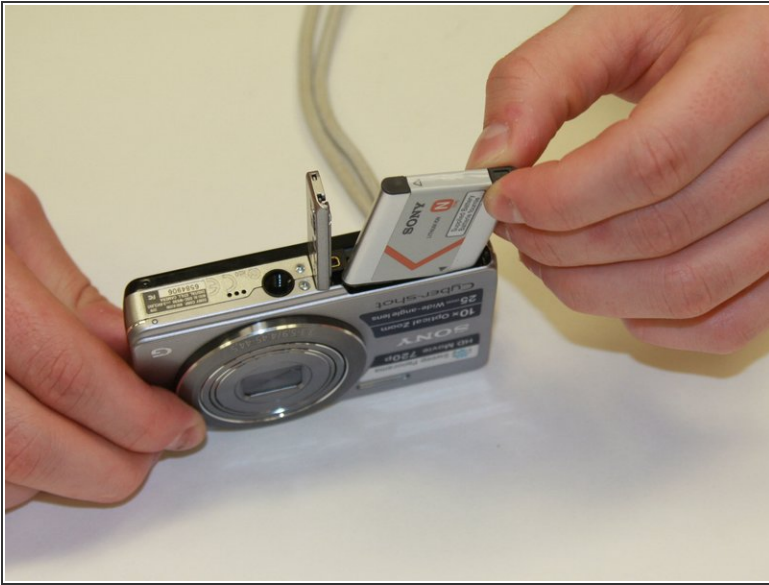
- Open the battery door.

Step 2



- Open the battery lock to release the battery.

Step 3



- Remove the battery.

To reassemble your device, follow these instructions in reverse order.