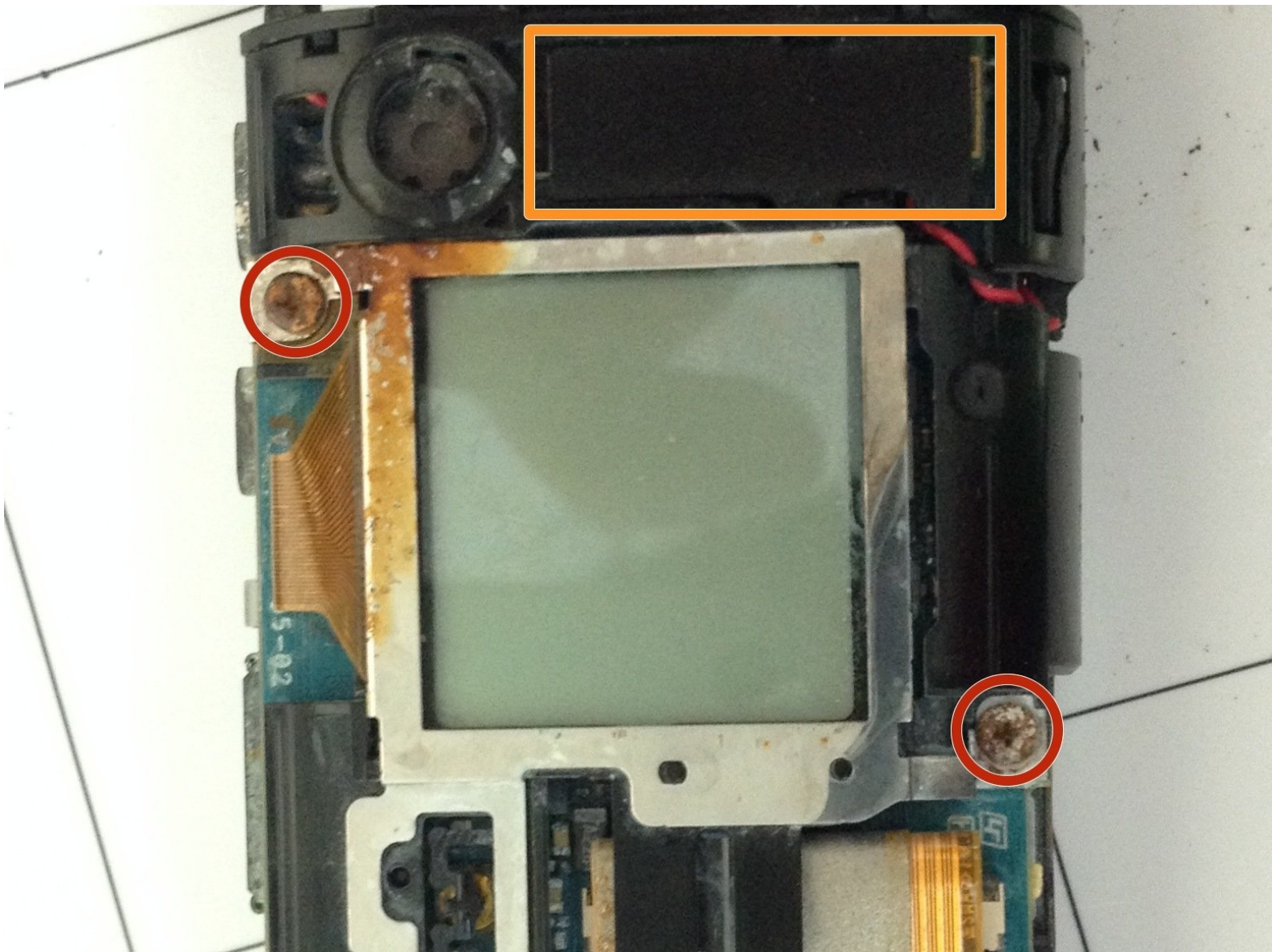




Sony HDR-AS30V LCD Screen Replacement

This guide will replace the LCD screen that has been scratched, cracked, or has stopped working.

Written By: Dylan Keiter



INTRODUCTION

This is a comprehensive guide on how to fix and replace the LCD screen for Sony HDR-AS30V.



TOOLS:

- [Phillips #000 Screwdriver](#) (1)
 - [1.5 mm Flathead Screwdriver](#) (1)
-

Step 1 — Outer Casing



- Power off the device. Remove the component jack cover.
- Open component door.
- Using the Phillips 00 screwdriver, remove the two screws holding the jack cover in place.

Step 2



- Open the battery door.
- Slide the battery cap along the length of the camera, then flip the cap outward. Use caution; there may be internal damage affecting the functionality of the sliding mechanism.

Step 3



- Prepare to remove outer casing.
- Using the 2.5 mm precision slotted screwdriver, insert the tip of the screwdriver under the holder to wedge. Use caution when preparing to wedge apart fragile components.

Step 4



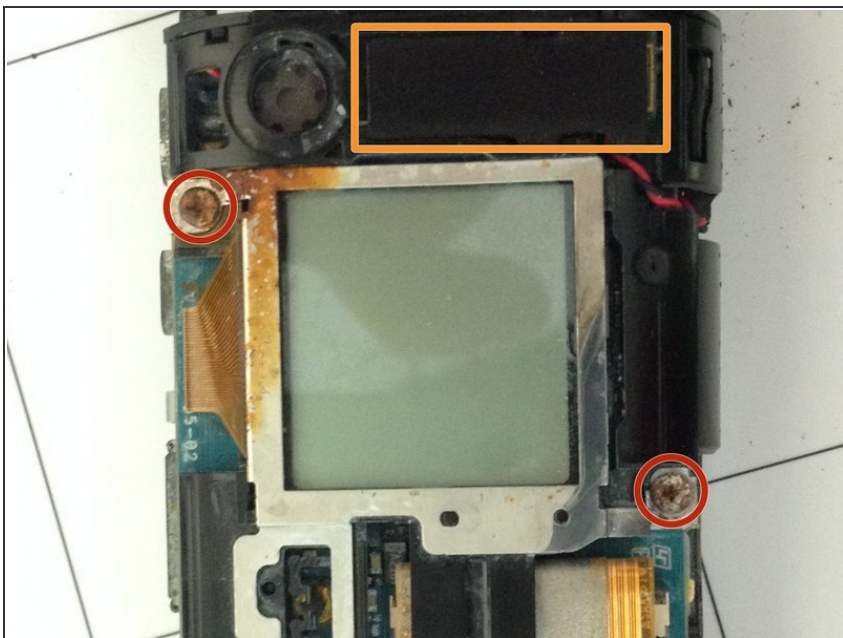
- Separate Casing from Device.
- With the screwdriver wedged, apply slight force while pulling the casing away from the device. Use caution to avoid causing damage to fragile parts.

Step 5



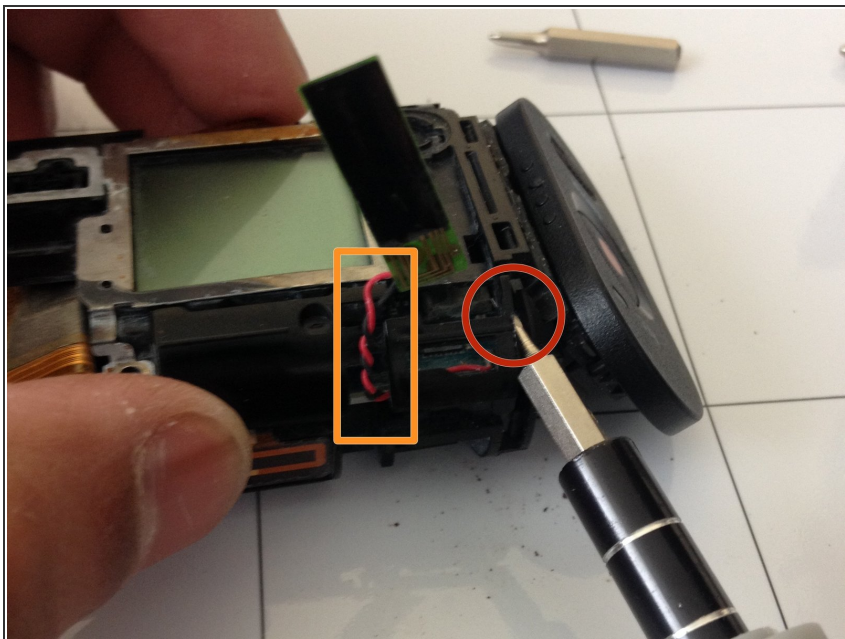
- With the outer casing pulled away from the device, take note of the orientation of the inner component to avoid an electrical short.
- Once the orientation of the inner component is noted, slide the inner component out of the casing. You may now replace the broken casing with a new one.

Step 6 — LCD Screen



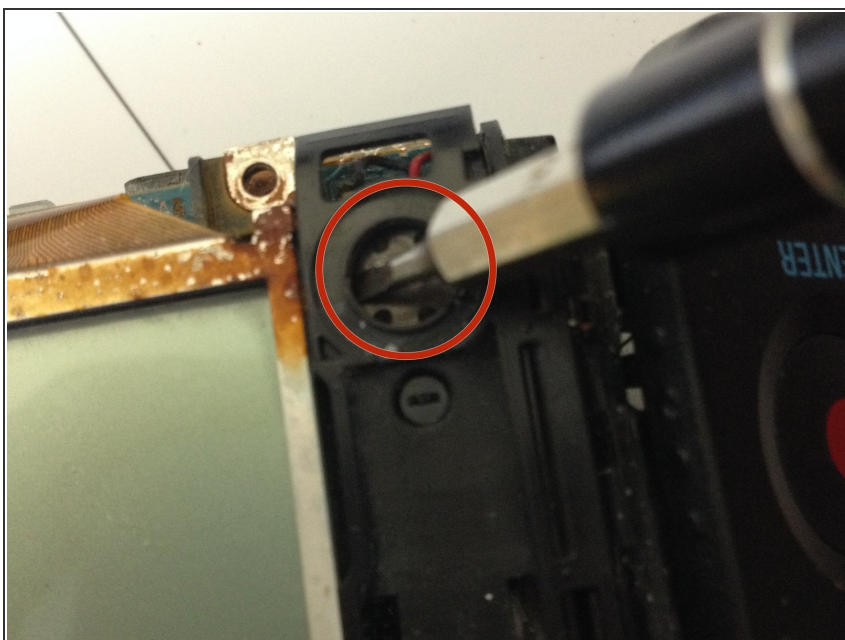
- Remove two screws with the PH000 screwdriver.
- Pop off plastic holder.

Step 7



- With the flathead screwdriver, wedge under area shown and pop upwards.
- ⚠ Be sure to move the flex cable out of the way while flipping the plastic inner casing upward.

Step 8



- Gently push speaker out of slot

Step 9



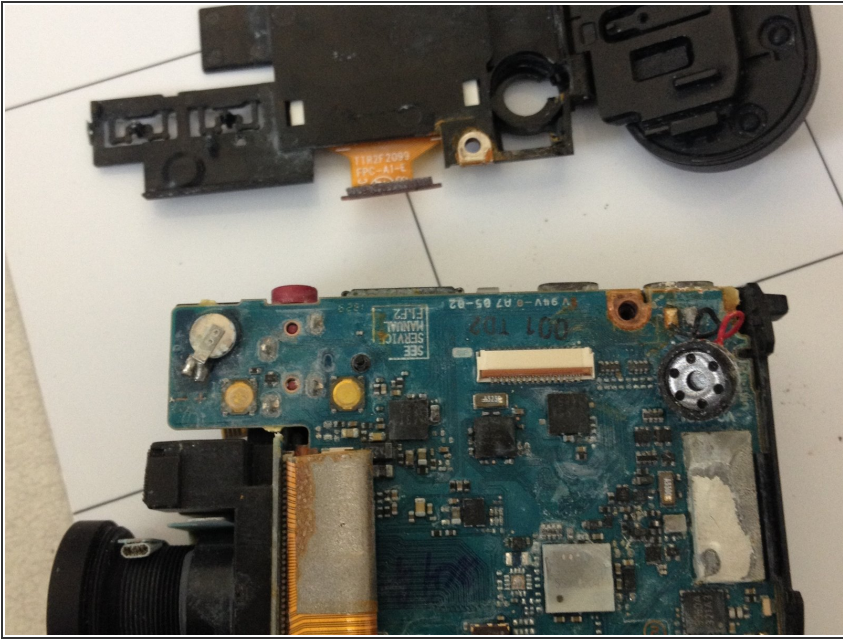
- Flip open screen and make sure no cables are in the way.

Step 10



- With the flathead, lift up cable lock and pull the film out from underneath the lock.

Step 11



- Gently pull out screen.

To reassemble your device, follow these instructions in reverse order.