



Tabby Kidz Battery Replacement

Replacing a battery to improve the battery life.

Written By: Mohamed



INTRODUCTION

The battery is a Lithium ion battery, and it runs at 2700mAh with 3.7 Volts. Beware of electrical shock because of this. You will need a soldering gun to complete this job, so be cautious while using this gun as it releases heat at very high temperatures.



TOOLS:

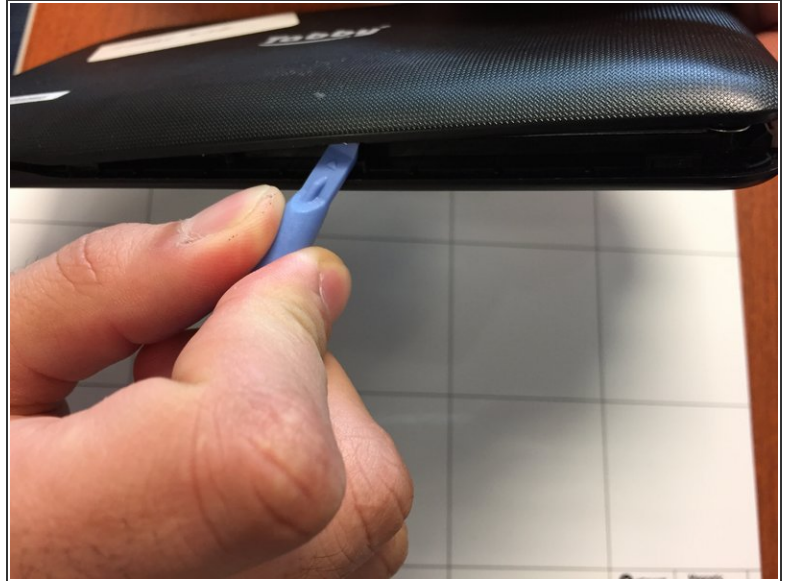
- [Soldering Iron](#) (1)
- [Solder](#) (1)
- [1.5" Thin Putty Knife](#) (1)
- [Safety Glasses](#) (1)
- [Tesa 61395 Tape](#) (1)



PARTS:

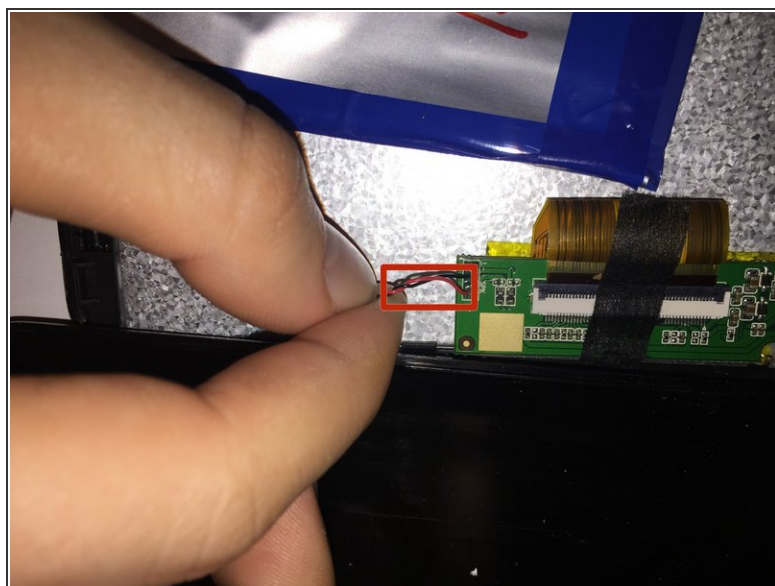
- [Great Power 2700mAh Lithium ion battery.](#) (1)

Step 1 — Dismantling the tablet.



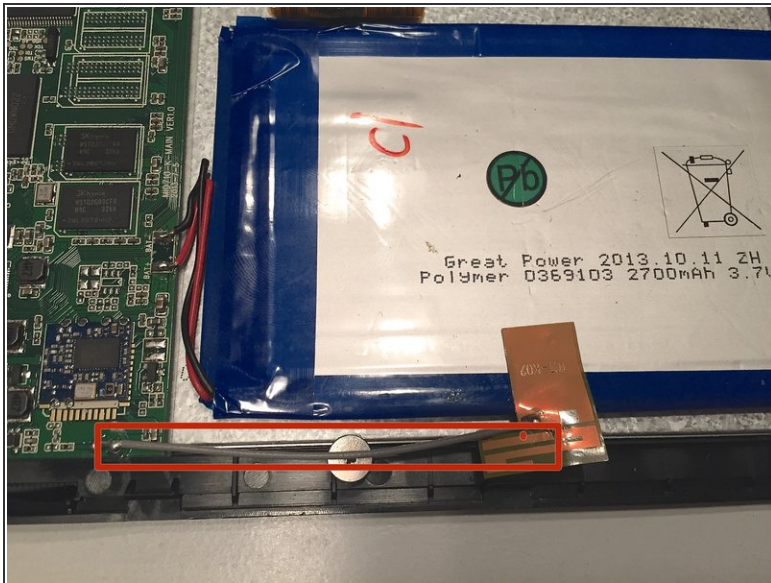
- First stick a thin metal wedge into the side of the tablet.
- Now, pry the edge open gently in order to release the tabs around the device.

Step 2 — Opening the tablet.



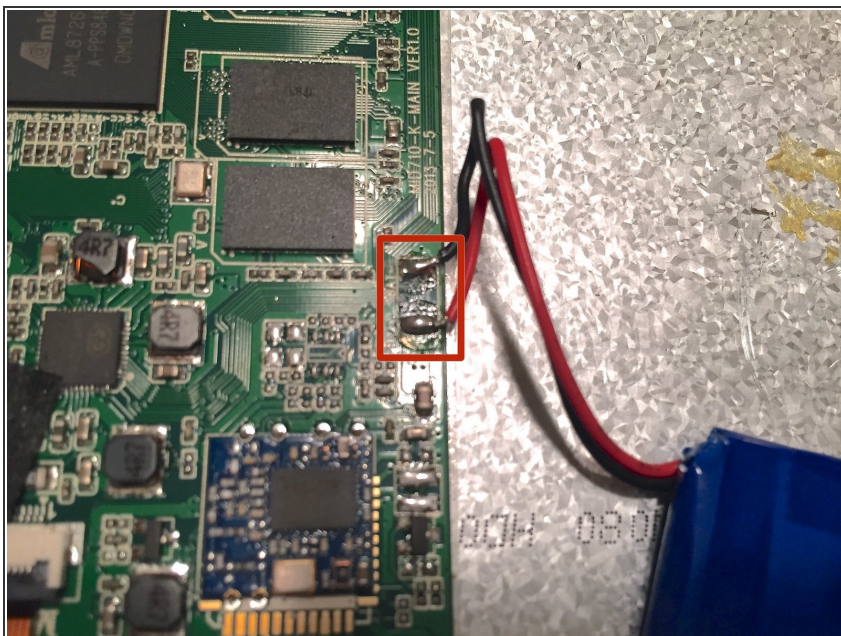
- Once you have half of the tabs undone, proceed to use your fingers to pull apart the two halves of the tablet.
 - Now, set the two pieces next to each other gently.
- ⚠ Make sure to be extremely gentle as you remove the two halves of the tablet. Otherwise, you may tear the speaker wires if you use excessive force.

Step 3 — Removing the ground wire.



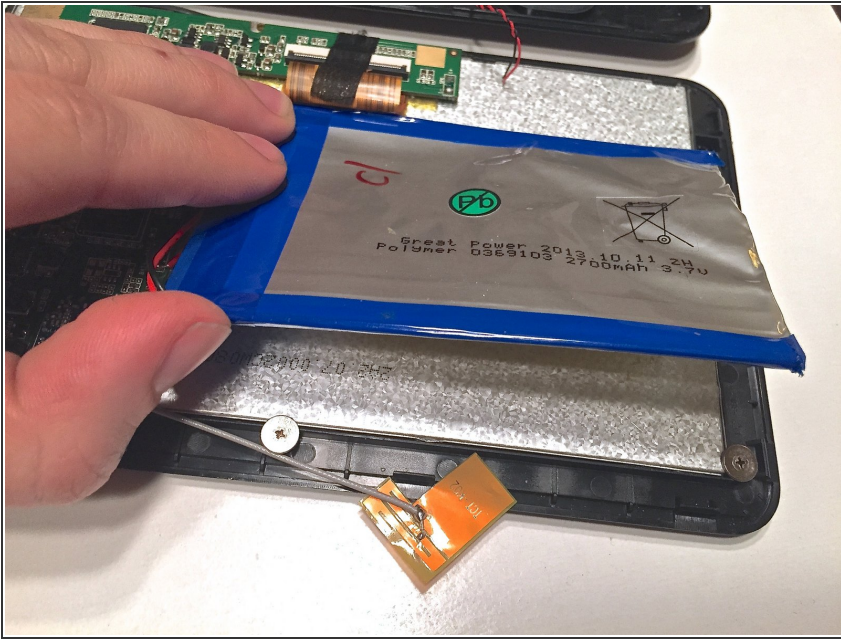
- There is a small grey wire that runs from the green logic board to the battery. This is the ground wire, and it needs to be removed from the battery.
- (i) The orange end is much like tape so you can just peel it up and set it aside.

Step 4 — De-soldering the battery.



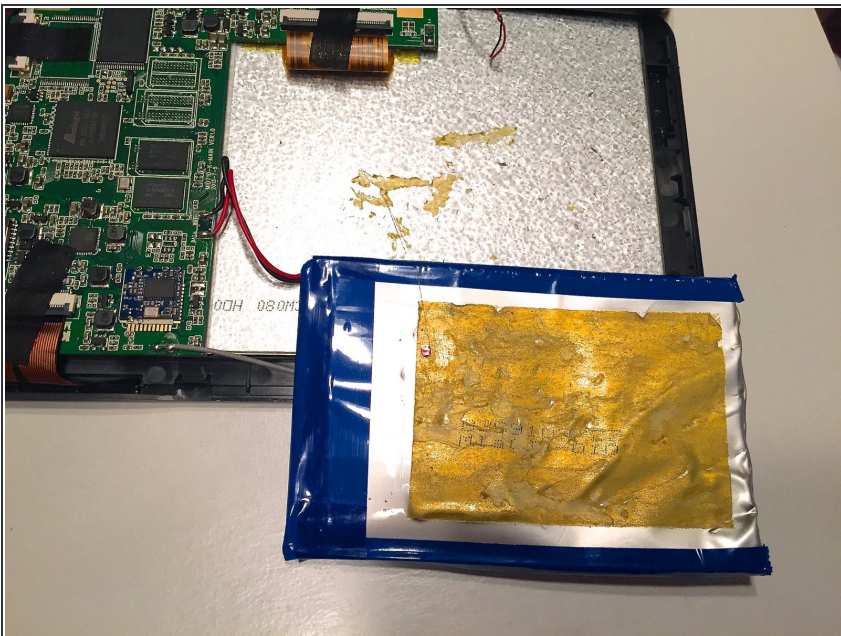
- ⚠ First, put on some safety glasses. Use extreme caution as this next step contains hazards, such as electric shock and burns.
- Have your soldering gun heated up. Next, gently touch the silver colored bulbs at the end of the wires. Once the solder has melted, pull the wire off the green motherboard. Then, do the same to the other wire.

Step 5 — Removing the battery.



- The old battery is attached to the back of the screen by adhesive double sided tape. This means you will have to peel the battery from the surface. A putty knife will be needed to get under the battery.
- ⓘ Do not worry if the battery bends a little.
- When reattaching the new battery, use new 2mm double sided tape to stick the battery back on the screen.

Step 6 — Disposing of the battery properly.



- The old battery needs to be recycled. Make sure of proper disposal.

Step 7 — Congratulations!



- Now just follow the steps in reverse order in order to put your tablet back together.

To reassemble your device, follow these instructions in reverse order.