



MacBook Air 13" Early 2015 I/O Board Cable Replacement

Use this guide to replace the I/O board's...

Written By: Sam Goldheart



INTRODUCTION

Use this guide to replace the I/O board's interconnect cable in your MacBook Air 13" Early 2015.



TOOLS:

- [P5 Pentalobe Screwdriver Retina MacBook Pro and Air](#) (1)
- [Spudger](#) (1)



PARTS:

- [MacBook Air 13" \(Mid 2013 to 2017\) I/O Board Cable](#) (1)

Step 1 — Lower Case



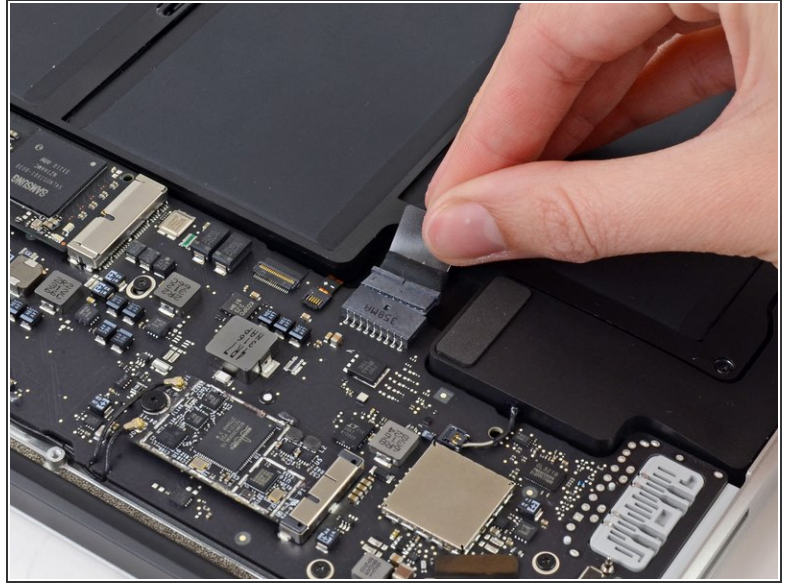
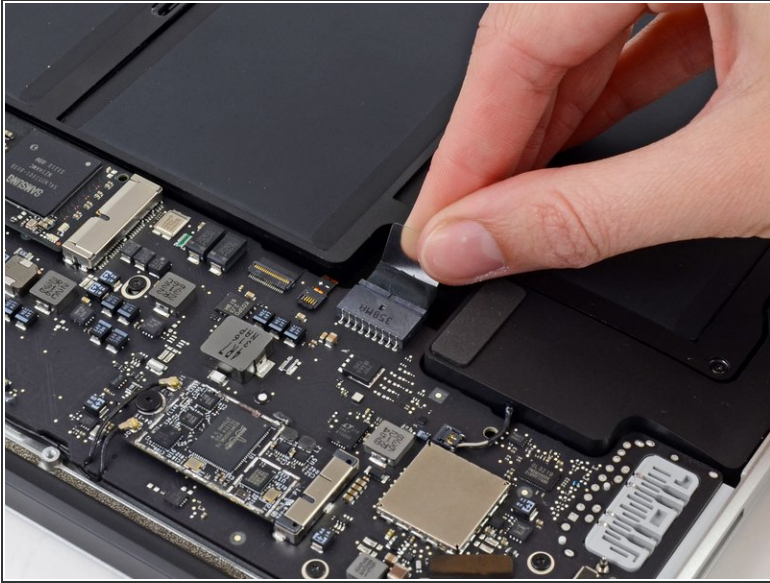
- ❗ Before proceeding, power down your MacBook. Close the display and lay it on a soft surface, top-side down.
- Use a [P5 Pentalobe](#) driver to remove ten screws securing the lower case, of the following lengths:
 - Two 9 mm screws
 - Eight 2.6 mm screws



Step 2



- Wedge your fingers between the display and the lower case and pull upward to pop the lower case off the Air.
- Remove the lower case and set it aside.

Step 3 — Battery Connector



-  To ensure that everything is de-energized and won't turn on while you're working, it is recommended that you disconnect the battery.
- Grab the clear plastic pull tab attached to the battery connector and pull it parallel to the board toward the front edge of the Air.
-  Do not lift upward on the connector as you disconnect it or you risk damage to the connector socket.

Step 4 — I/O Board Cable



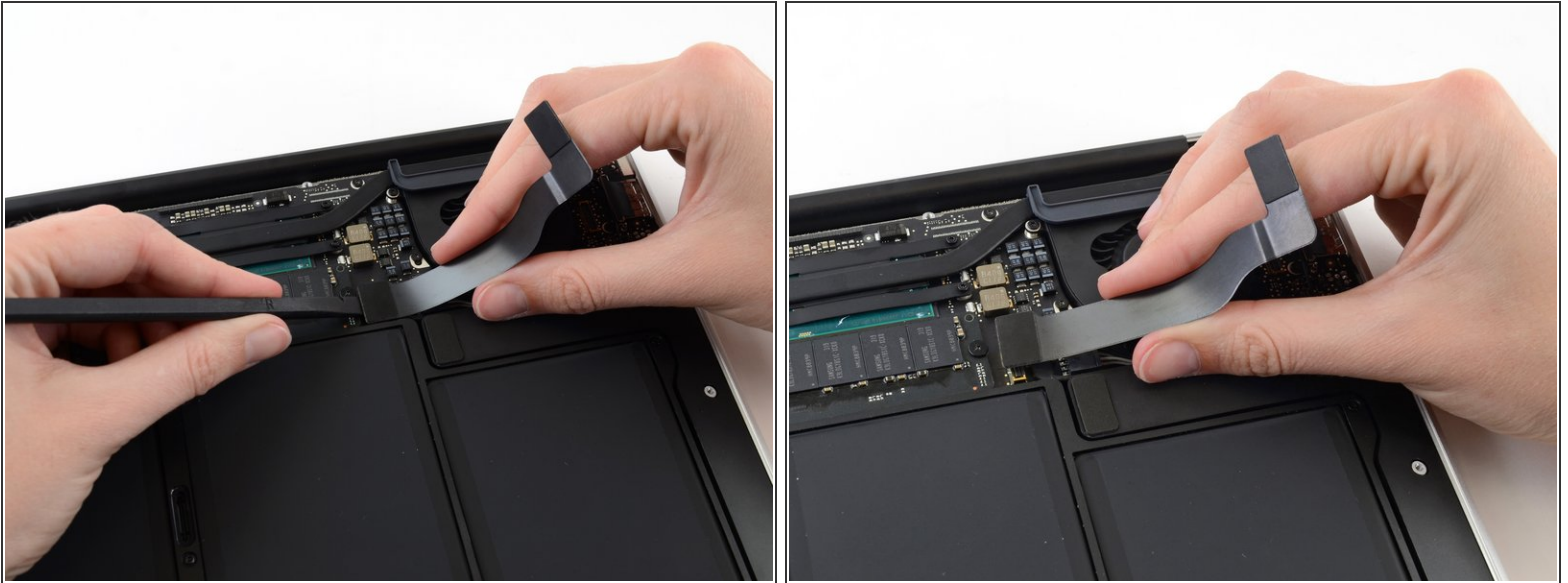
- Use the flat end of a spudger to pry the I/O board cable connector up out of its socket on the I/O board.

Step 5



- Carefully peel the I/O board cable from the adhesive securing it to the top of the fan.
- ☑ During reassembly, make sure this cable is in the correct orientation. It will fit if reversed, but the laptop will not boot.

Step 6



⚠ The following connector has an especially deep socket. Use care when disconnecting it.

- While gently pulling the I/O board cable upward near its connection to the logic board, use the flat end of a spudger to pry up on alternating sides of the connector to help "walk" it out of its socket.
- Remove the I/O board cable.

To reassemble your device, follow these instructions in reverse order.

Take your e-waste to an [R2 or e-Stewards certified recycler](#).

Repair didn't go as planned? Try some [basic troubleshooting](#), or ask our [Answers community](#) for help.