



Mad Catz Dual Force 2 Pro Motherboard Replacement

This guide will show the step-by-step instructions for removing the controller's motherboard.

Written By: Alexander Coyne



INTRODUCTION

Please remember that these controllers are not designed to be repaired so do not be surprised if you need to be rough with it or something was not initially installed correctly. Also, the same kind of screw was used throughout the controller.



TOOLS:

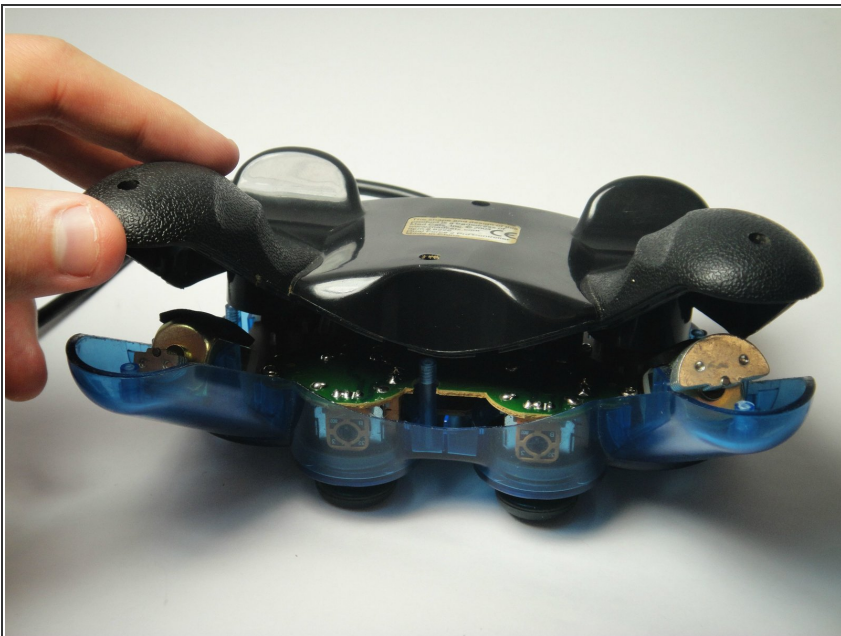
- [Small Phillips Head Screwdriver](#) (1)
 - [Phillips #1 Screwdriver](#) (1)
-

Step 1 — Motherboard



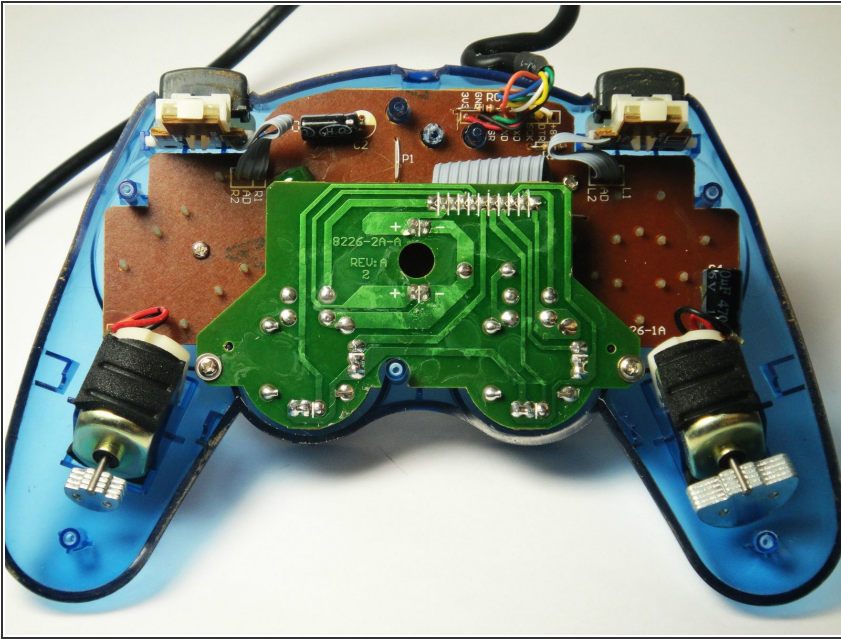
- Remove the six 7 mm Phillips screws from the rear cover.

Step 2



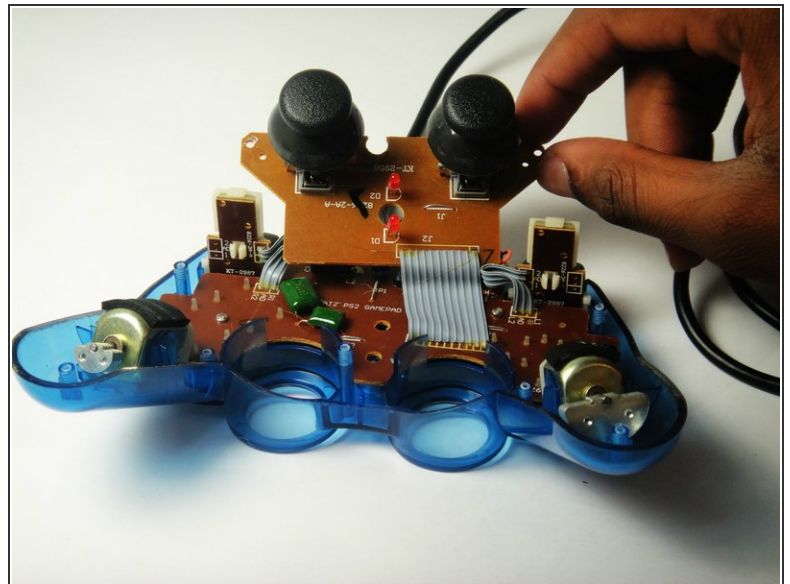
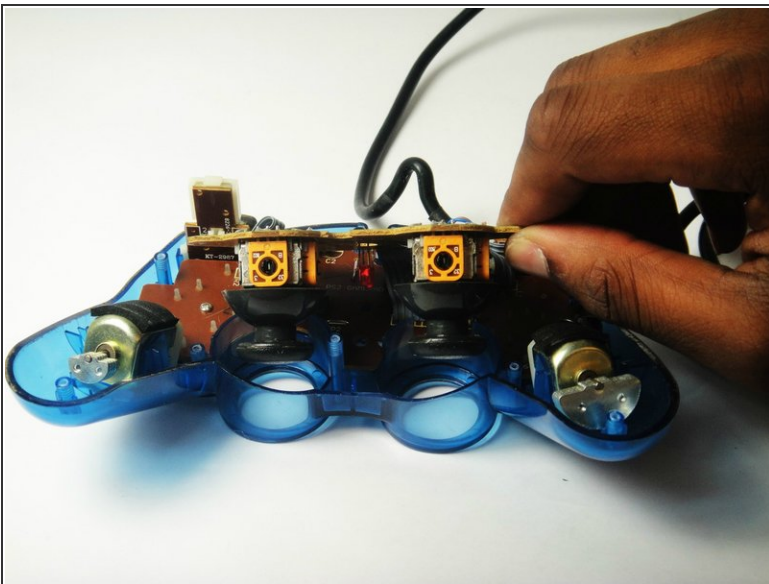
- Remove the back of the controller.
- ⓘ There are no loose items in the controller that can fall out, so you can open it, generally, however you want.

Step 3



- Remove the two 7 mm screws on the closest circuit board.

Step 4



- Lift the closest circuit board away from the motherboard.
- ⓘ Be sure you do not tear the ribbon connecting the smaller circuit board to the motherboard.

Step 5



- Remove the two 7 mm Philip screws on the motherboard.

Step 6



- Remove the motherboard assembly from the cover.

To reassemble your device, follow these instructions in reverse order.