



Motorola V557 SIM Card Replacement

The SIM card lies behind the battery.

Written By: Alex Georges



INTRODUCTION

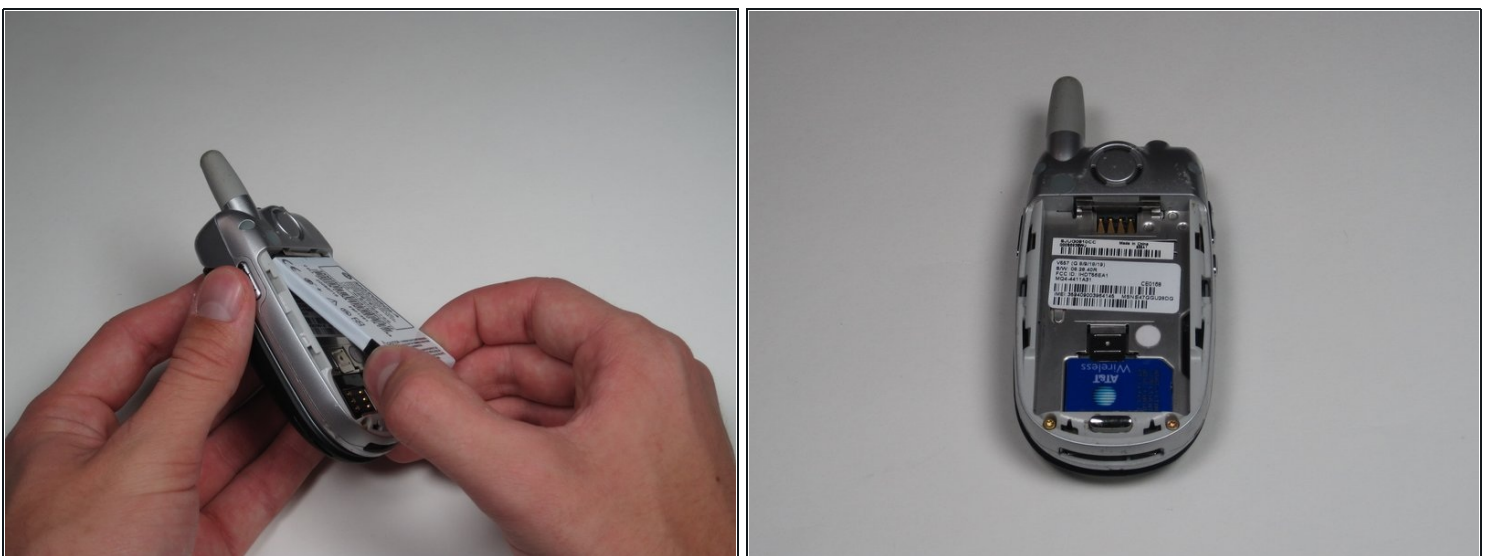
The SIM card lies behind the battery.

Step 1 — Battery



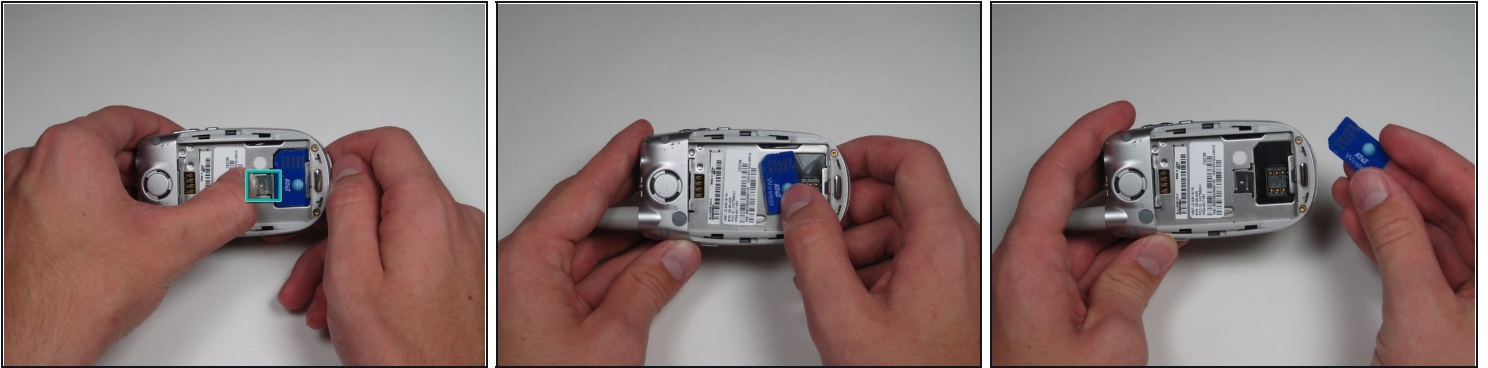
- First, on the back of the phone find the silver button on the top left corner of the phone.
- Simultaneously push down the button and slide the back plate down to reveal the battery.

Step 2



- Grab the lower edge of the battery at the two bottom corners.
- Pull upward on the edges to remove the battery.

Step 3 — SIM Card



- Push the metal slider towards the top of the phone until it clicks out of the original position.
- Gently slide out and remove the SIM card.

To reassemble your device, follow these instructions in reverse order.