



# Ematic Funtab FTABXXX Camera Replacement

This guide will help you replace a malfunctioning camera.

Written By: Dustin Clark

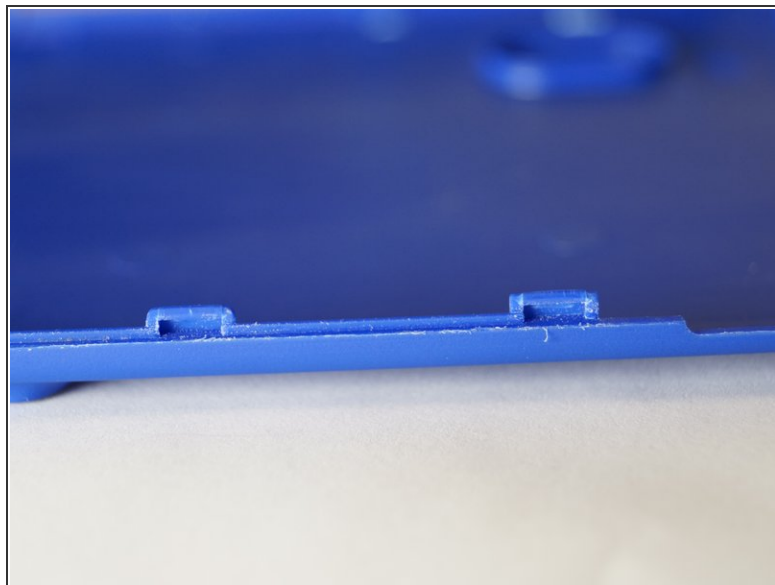




## TOOLS:

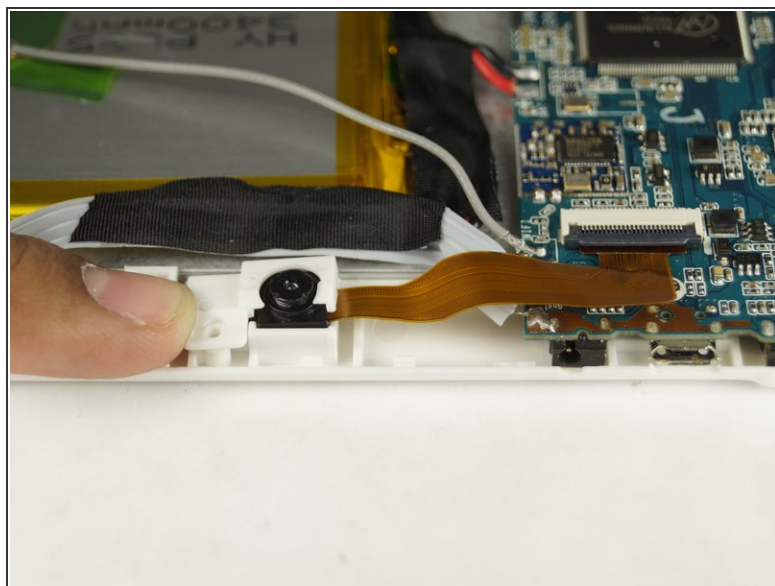
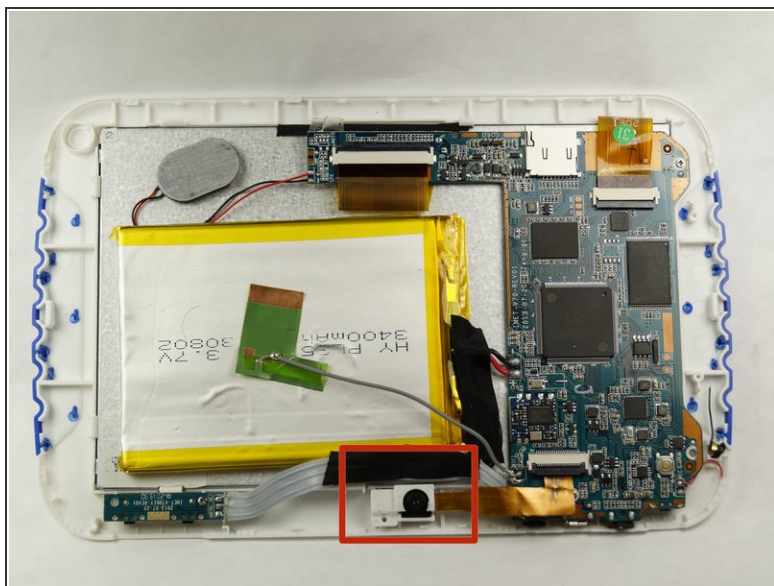
- [iFixit Opening Tools](#) (1)
-

## Step 1 — Camera



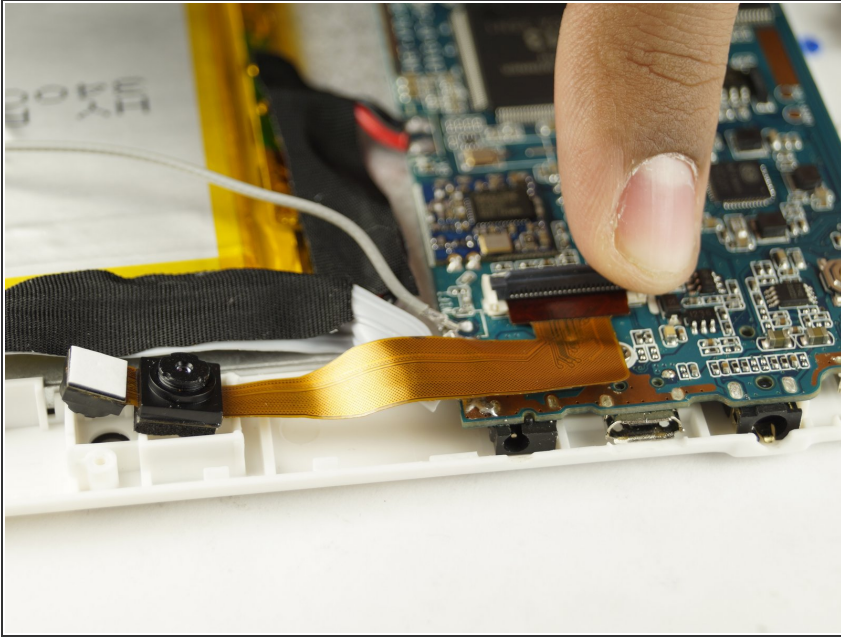
- First, be sure to power off the device.
- Carefully pry open the device. Note the plastic tabs in the image that hold the device together.

## Step 2



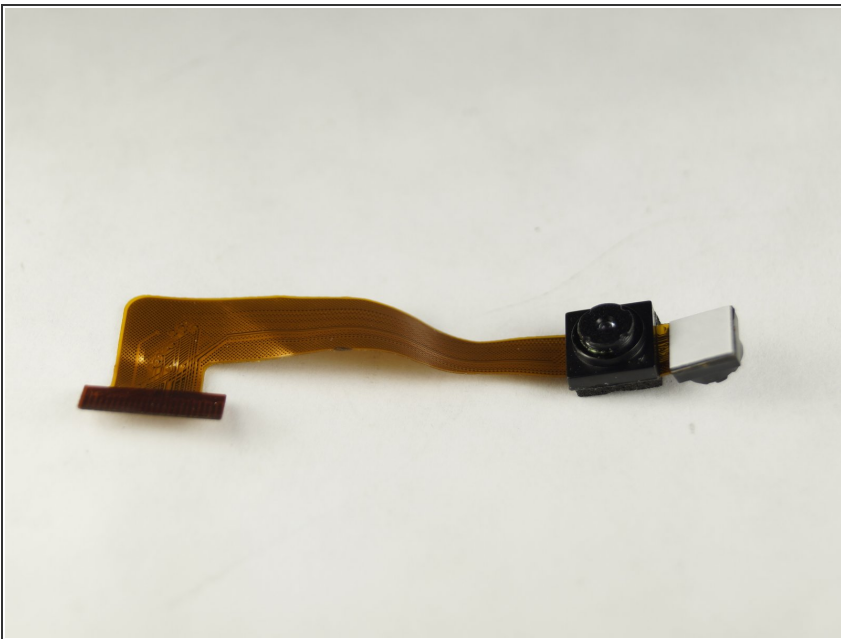
- Locate the camera in the top of the device. Note the plastic clip holding it in place.

### Step 3



- Carefully remove the white clip holding the camera.
- Carefully lift the data cable connecting the camera to the device's motherboard.

### Step 4



- Take the new camera piece and insert the data cable connection into the connection.

To reassemble your device, follow these instructions in reverse order.