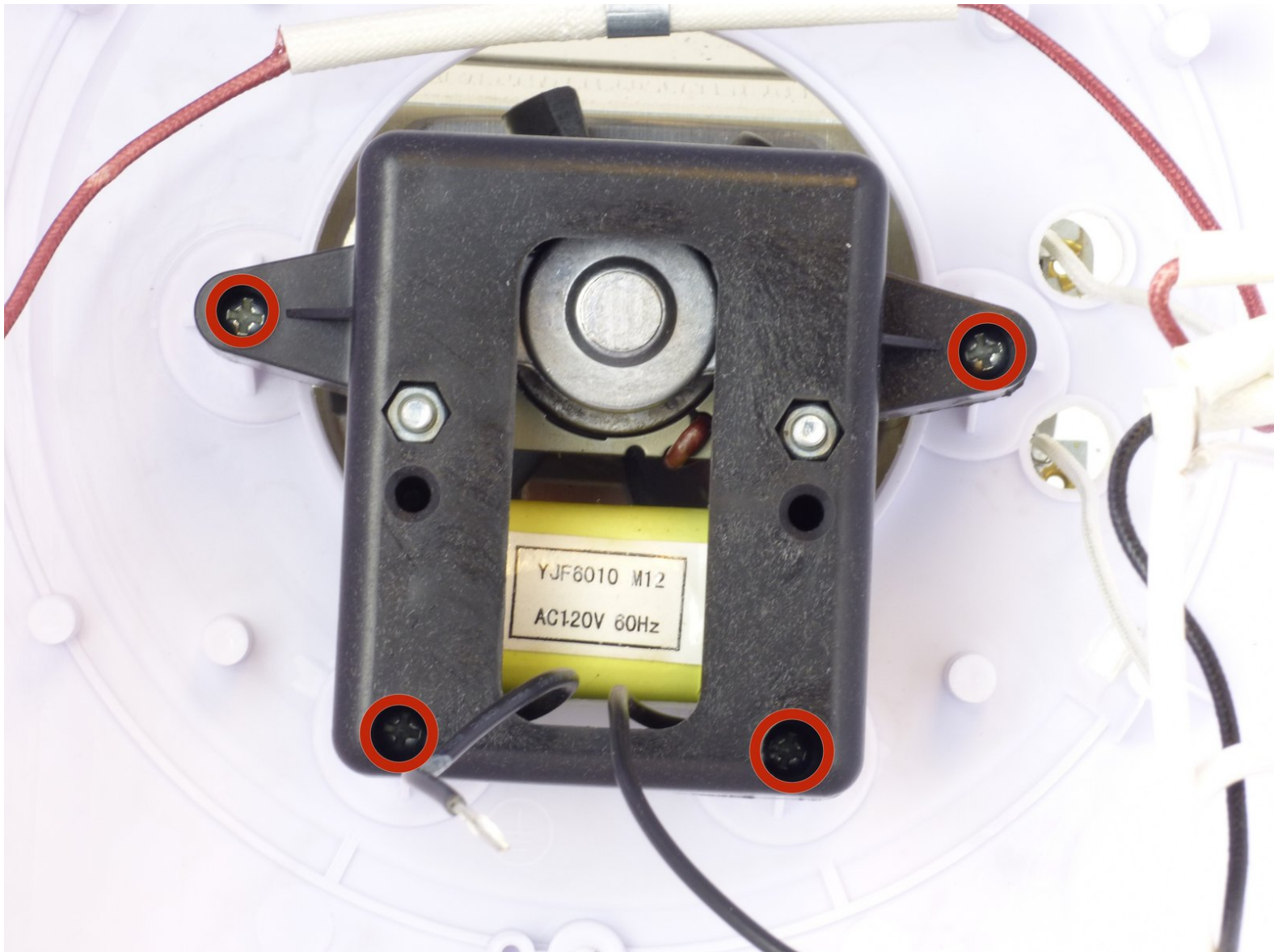




Nostalgia Electrics PCM805 Motor Replacement

This guide shows removing the motor from the cotton candy maker.

Written By: Joshua Harriger



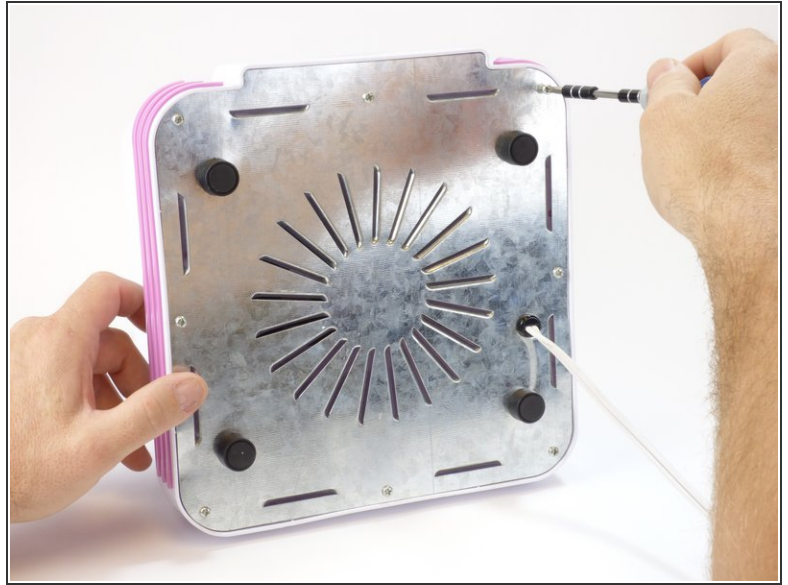
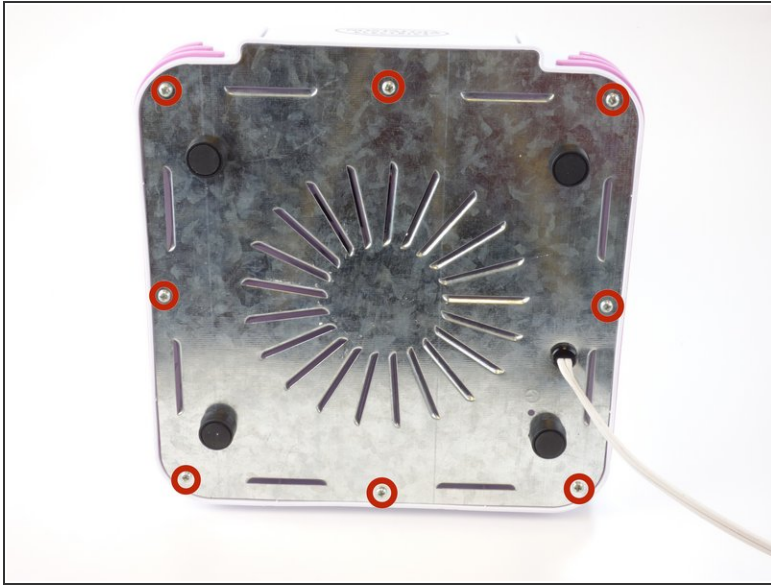
INTRODUCTION


Use this guide to replace the motor in the cotton candy maker if it has gone bad.

TOOLS:

- [Phillips #2 Screwdriver](#) (1)
 - [Utility Scissors](#) (1)
 - [Flush Cutter](#) (1)
-

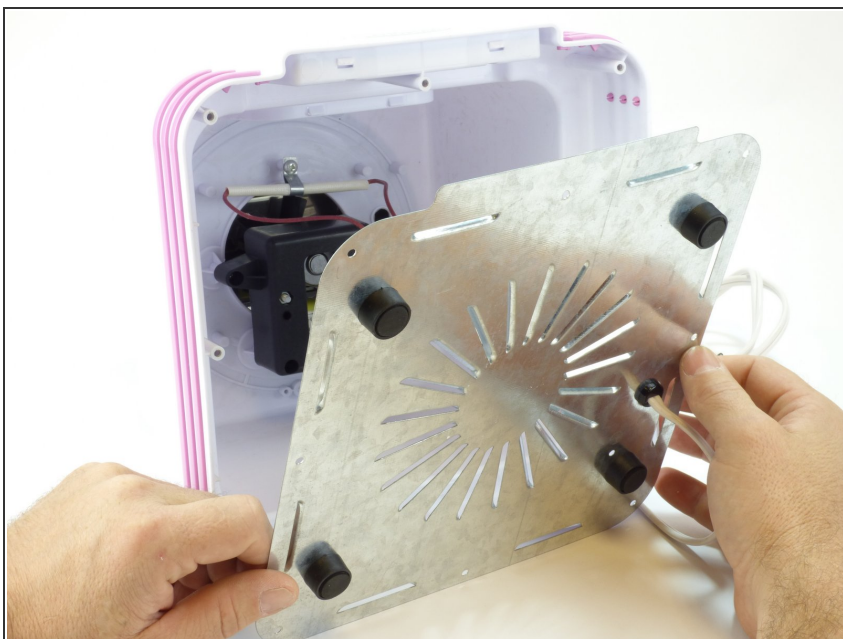
Step 1 — Unscrewing the base




 Unplug the device before following this guide.

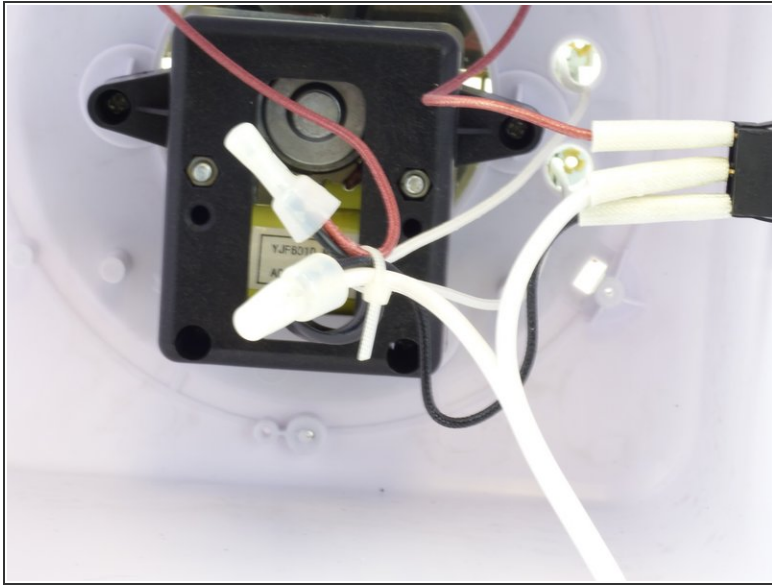
- First, place the device on its side, making sure the switch is not facing down.
- Remove the eight 12mm Phillips #02 screws from the base.

Step 2



- Gently separate the panel from the device.
-  Be sure not to tug at the wires that are still connected.

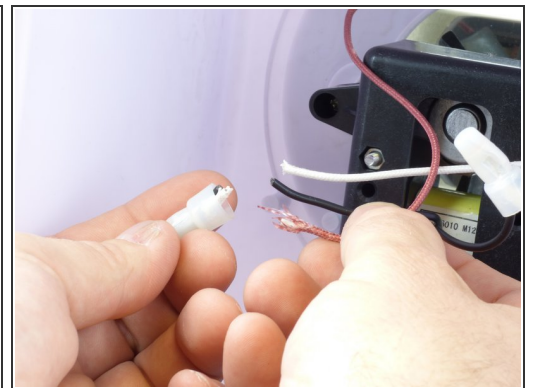
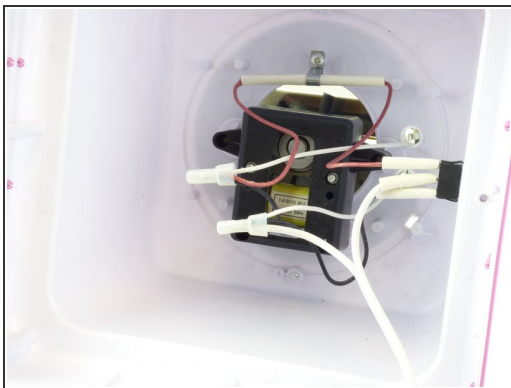
Step 3 — Nostalgia Electrics PCM805 Wiring Teardown



- Locate the tie strap holding the wires and cut with a pair of scissors.

i Use care not to snip the wires.

Step 4

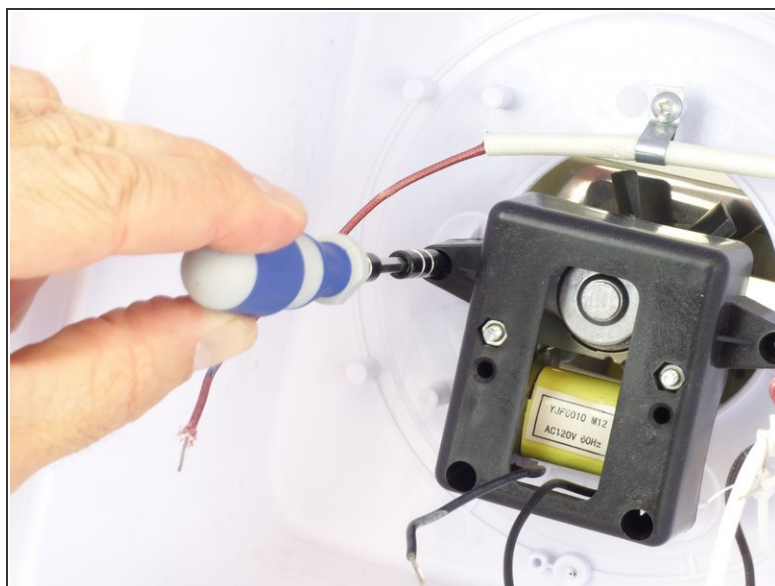
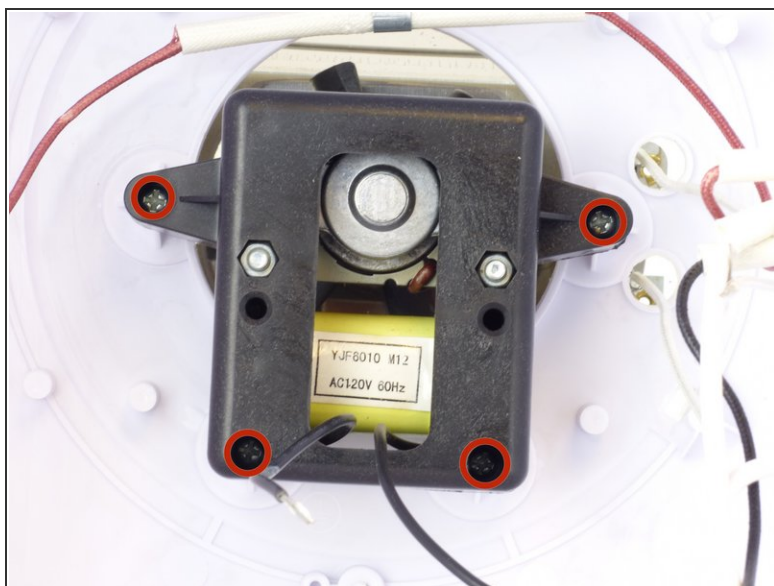


⚠ Make note of the wiring arrangement of each bundle before this step.

- Using wire cutters, cut each wire as close to the wire connector as possible.
- Cut the wires in both bundles.

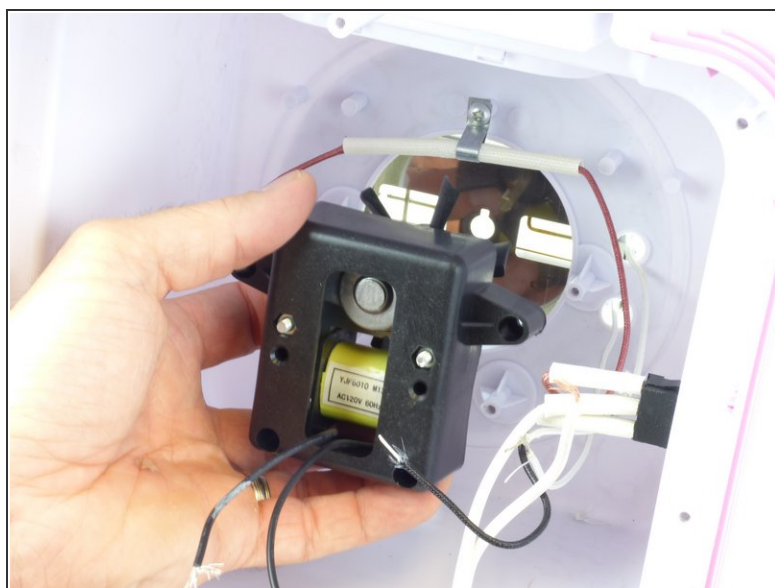
📌 To reassemble the cotton candy maker after cutting the wires, follow our [rewiring guide](#).

Step 5 — Motor



- Remove the four 12mm Phillips #02 screws to free the motor housing.

Step 6



- Line up the prongs on the motor shaft with the holes in the heating element and pull the motor out.

To reassemble your device, follow these instructions in reverse order.