



Repairing Philips GoGear SA3245 2 Battery and Frozen screen

When you have frozen screen with "Philips" logo.

Written By: ialexandroo





TOOLS:

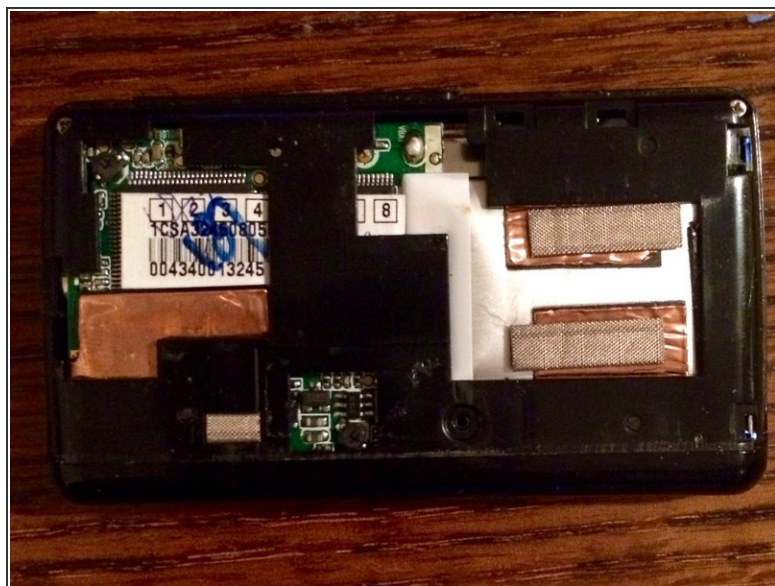
- [Essential Electronics Toolkit](#) (1)
-

Step 1 — Battery and Frozen screen



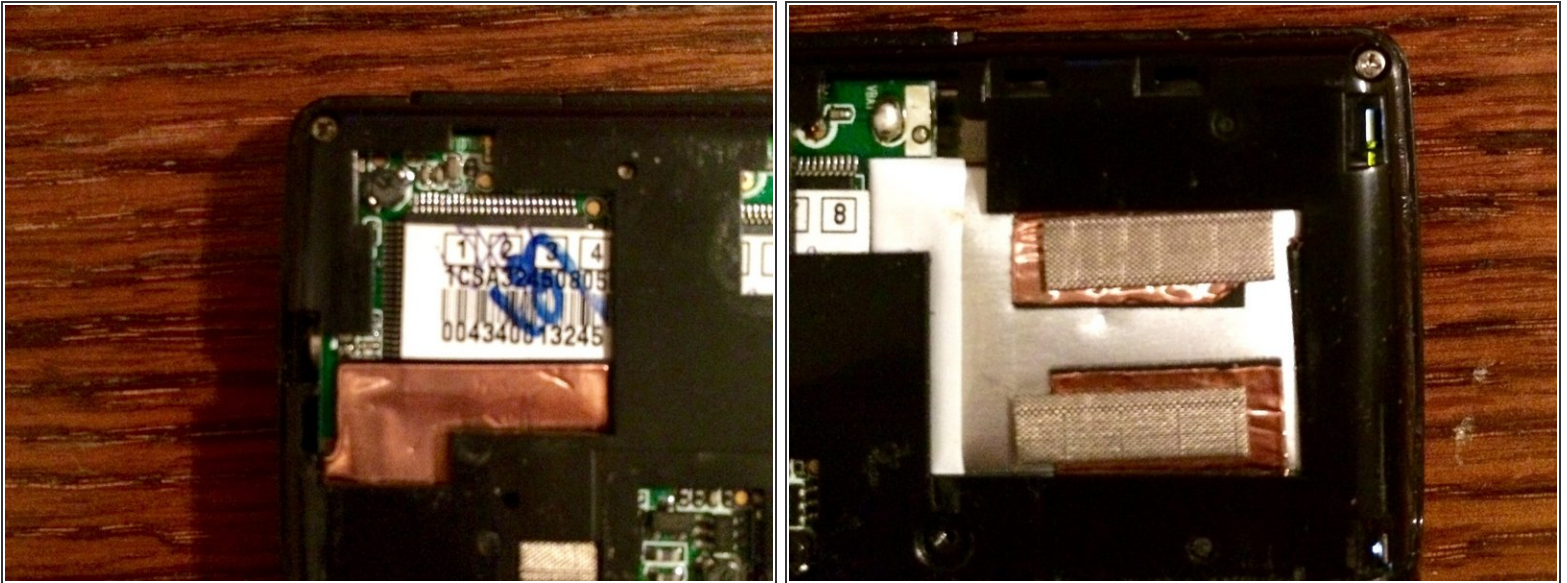
- Find the screw under the S/N Label

Step 2



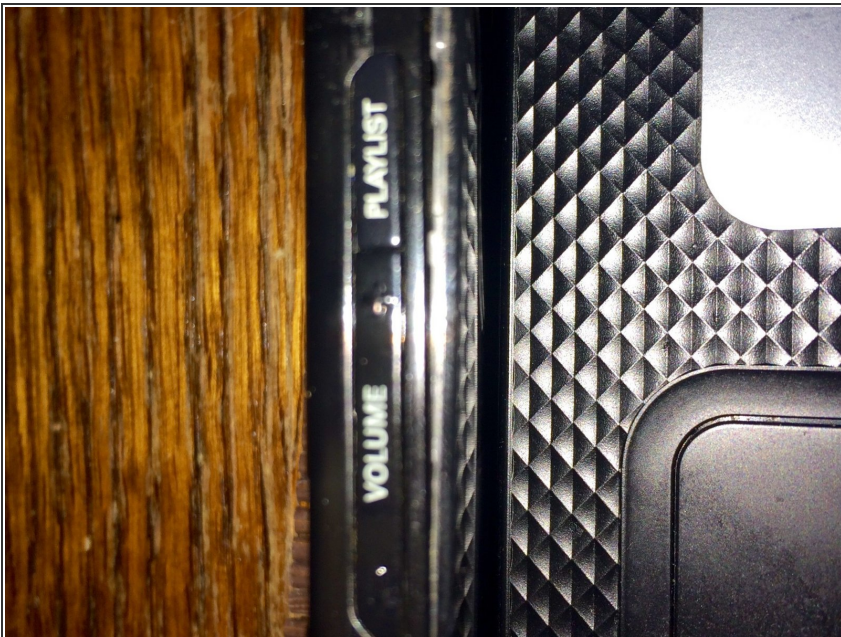
- Slide the metal panel
- It is slightly difficult

Step 3



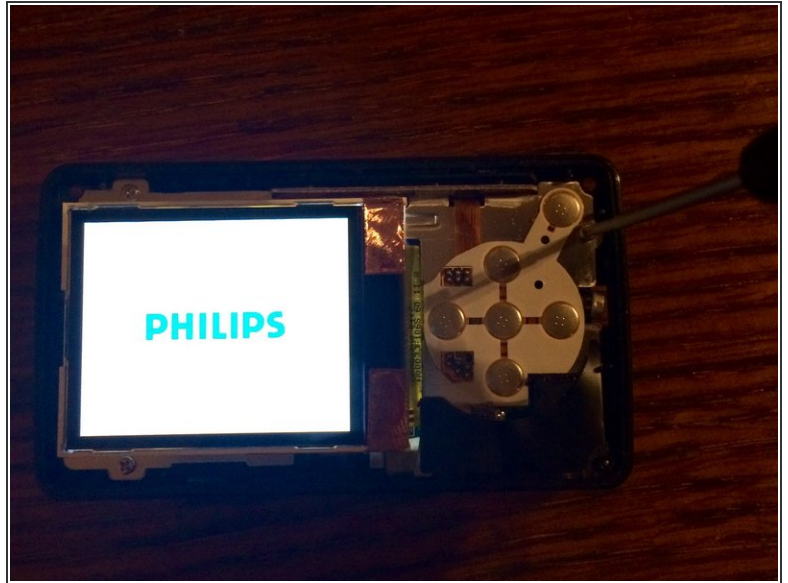
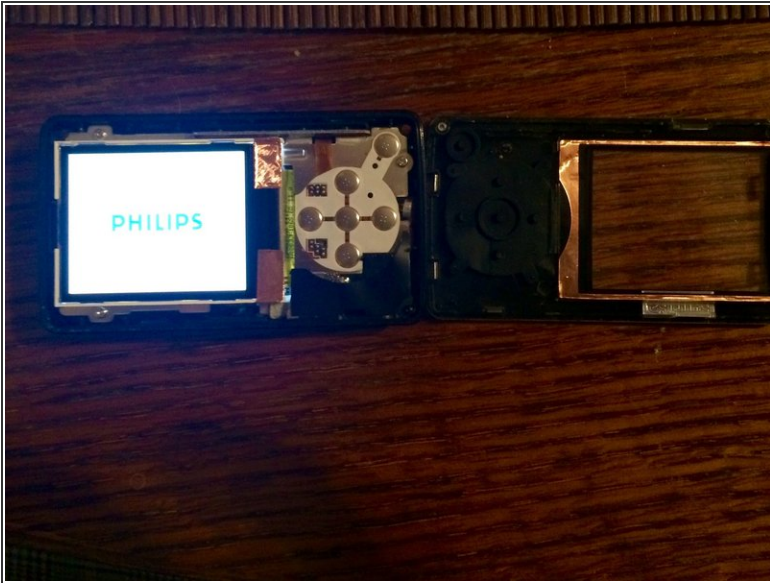
- Remove the two screws at the top left and right of the unit.

Step 4



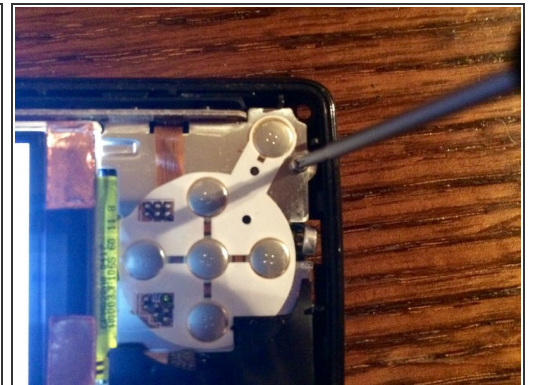
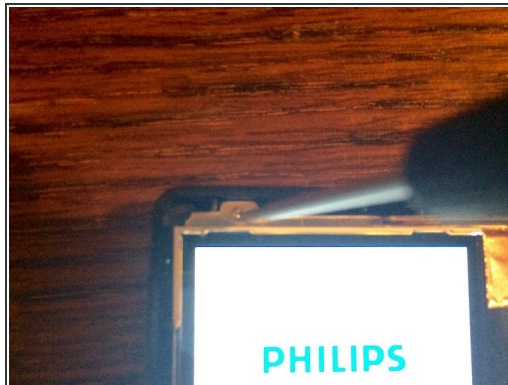
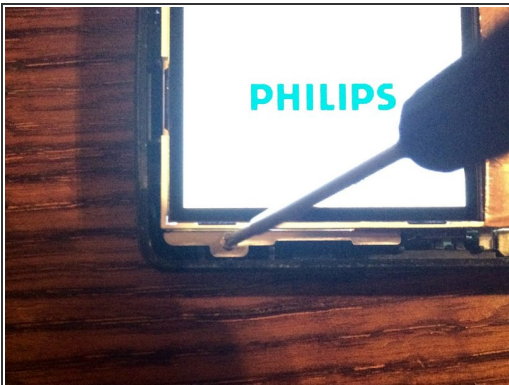
- Carefully remove the front panel

Step 5



- Insert wisdom here.

Step 6



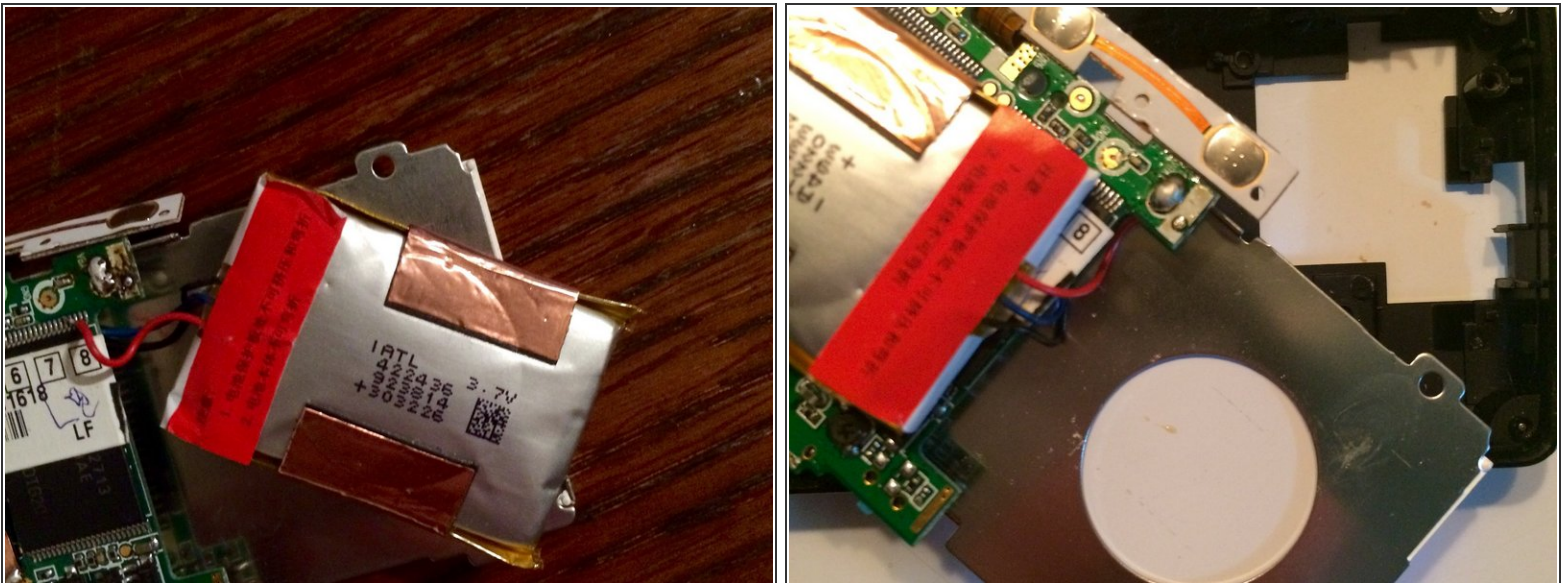
- Remove this 3 screws

Step 7



- Carefully remove the motherboard with display

Step 8



- This is a defective battery. Replace it with a new one.

To reassemble your device, follow these instructions in reverse order.