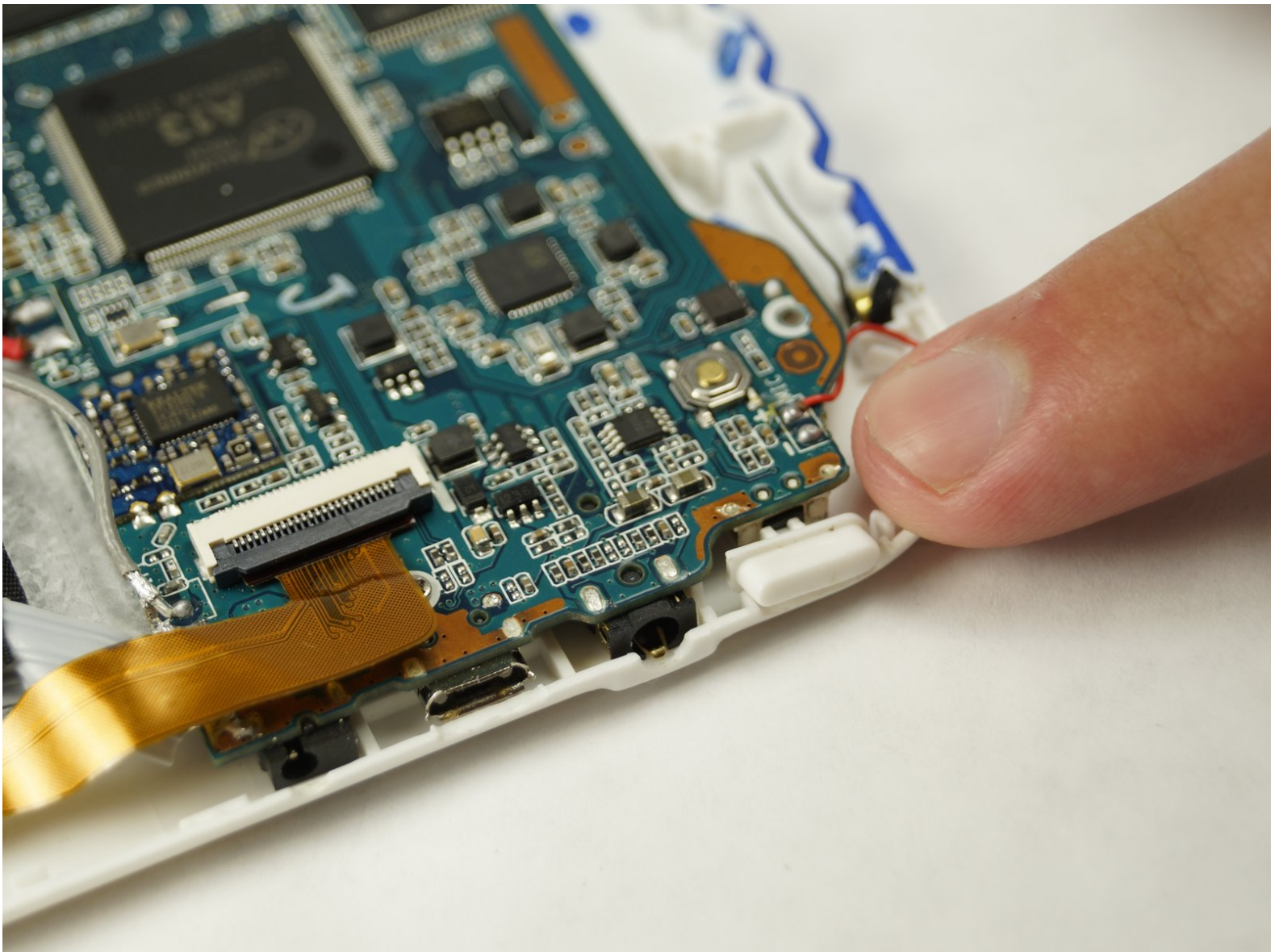




Ematic Funtab FTABXXX Power and Sound Buttons Replacement

This guide will direct the user in placing the sound and power buttons back into their place so that they work when the device is reassembled.

Written By: Xavier Smith



INTRODUCTION

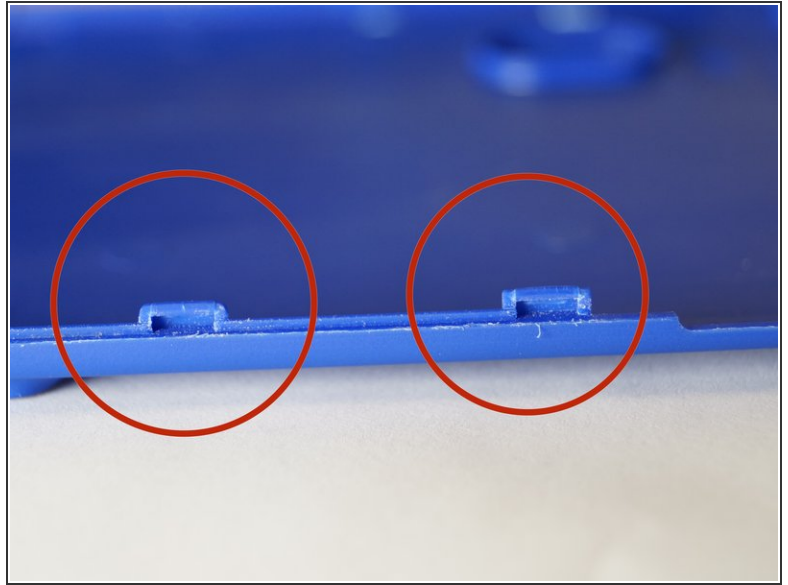
The power and sounds buttons commonly become loose preventing the user from turning on or off the device and preventing the adjustment of the volume.



TOOLS:

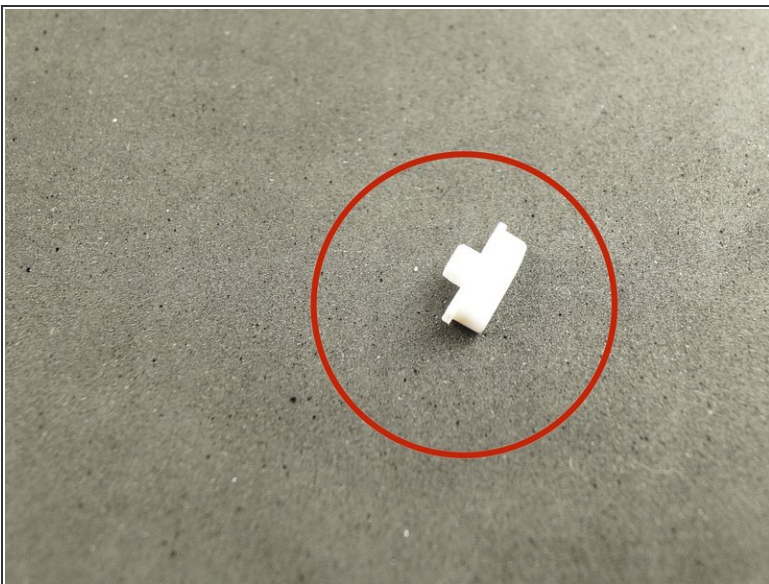
- [iFixit Opening Tools](#) (1)
-

Step 1 — Power and Sound Buttons



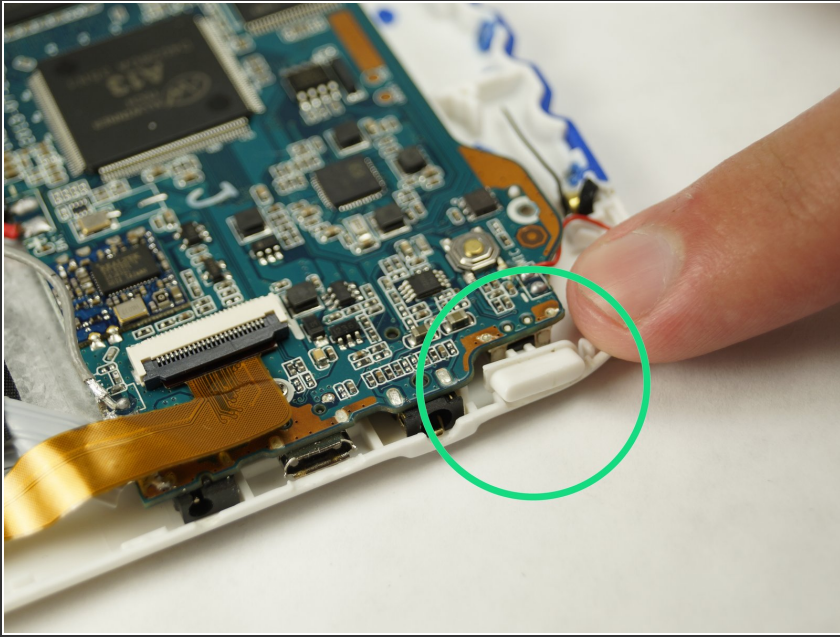
- Before opening the device make sure the device is powered down if possible.
- Using a spading tool open the device along the clips.

Step 2



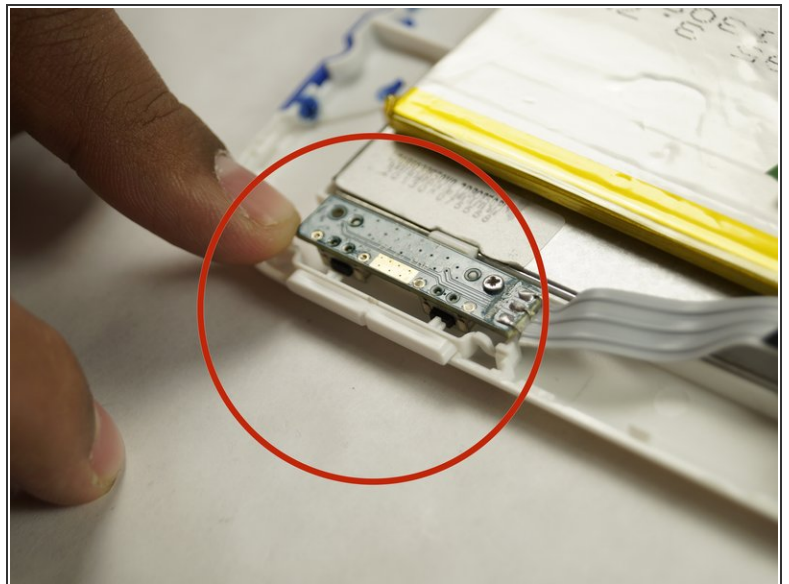
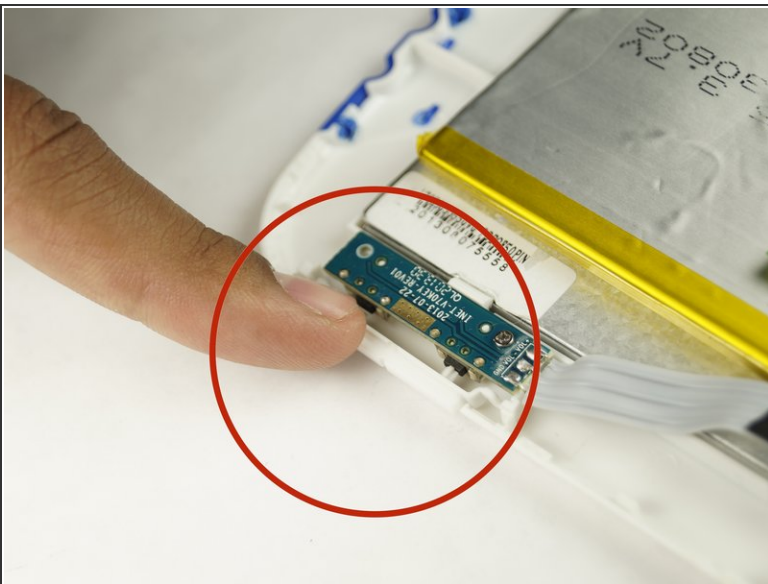
- Locate the plastic power button.
- Locate the plastic sound button.

Step 3



- Once the power button has been located place it in the appropriate spot as indicated by the picture. Make sure that the plastic button will connect with the black button when pressed.

Step 4



- Once the sound button has been located place it in the correct spot as indicated by the picture.
- Make sure the plastic sound button will connect with the small black buttons when pressed down.

To reassemble your device, follow these instructions in reverse order.