



# RCA Pro10 Edition Power/Volume Buttons Replacement

If the power button is being unresponsive or is jammed down you may need to readjust or replace it.

Written By: Dayne Russell





## TOOLS:

- [iFixit Opening Tools](#) (1)
- [Plastic Cards](#) (1)
- [Phillips #00 Screwdriver](#) (1)
- [Soldering Iron](#) (1)

## Step 1 — Speaker



- Using a separating tool, look for a seam in the plastic casing that looks most accessible.
- Use the prying tool to separate the front and back casing, working your way around the perimeter.
- Utilize a card tool or a pick to assist in keeping the case separated.
- ☑ To reassemble the device simply align the two casing halves and pinch to snap together or press down on the edges while the device is on a table.

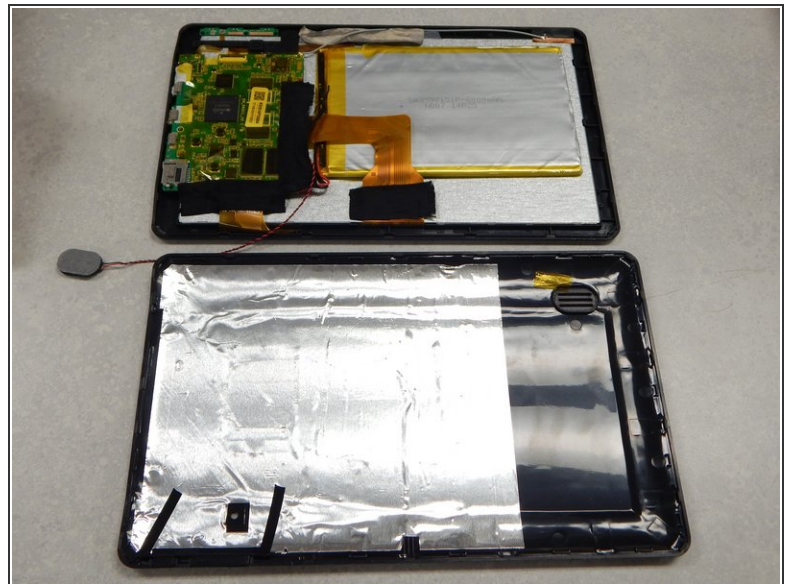
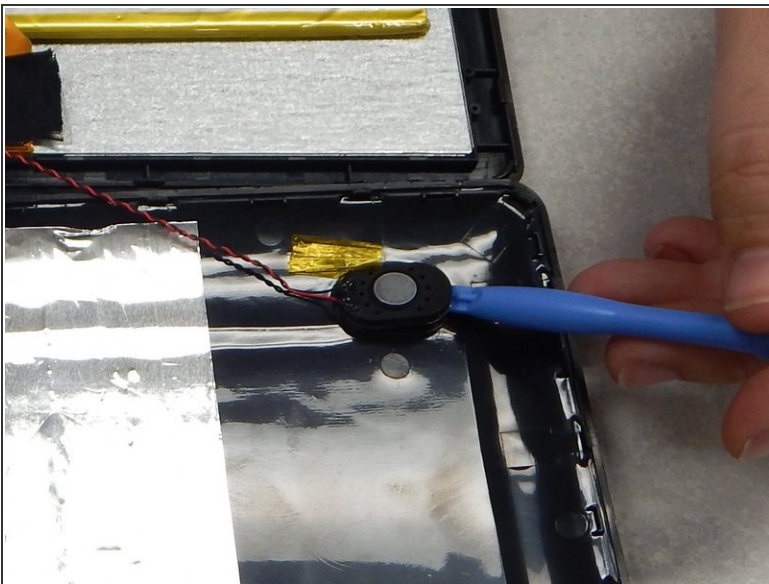


## Step 2



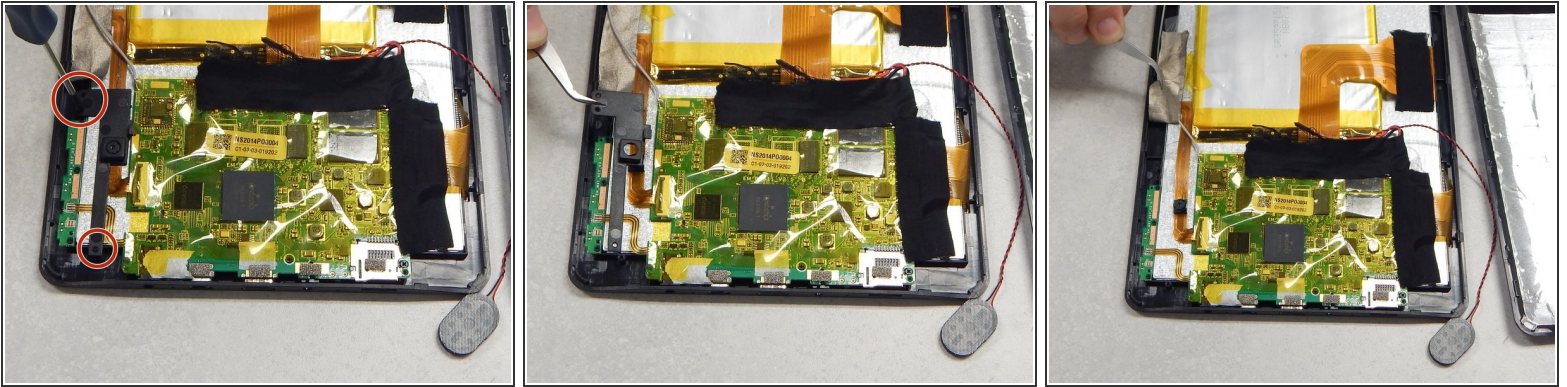
- Flip over the back of the device while keeping it close to the front, the speaker is attached to it.
- Remove the yellow tape securing the speaker to the back casing.

## Step 3



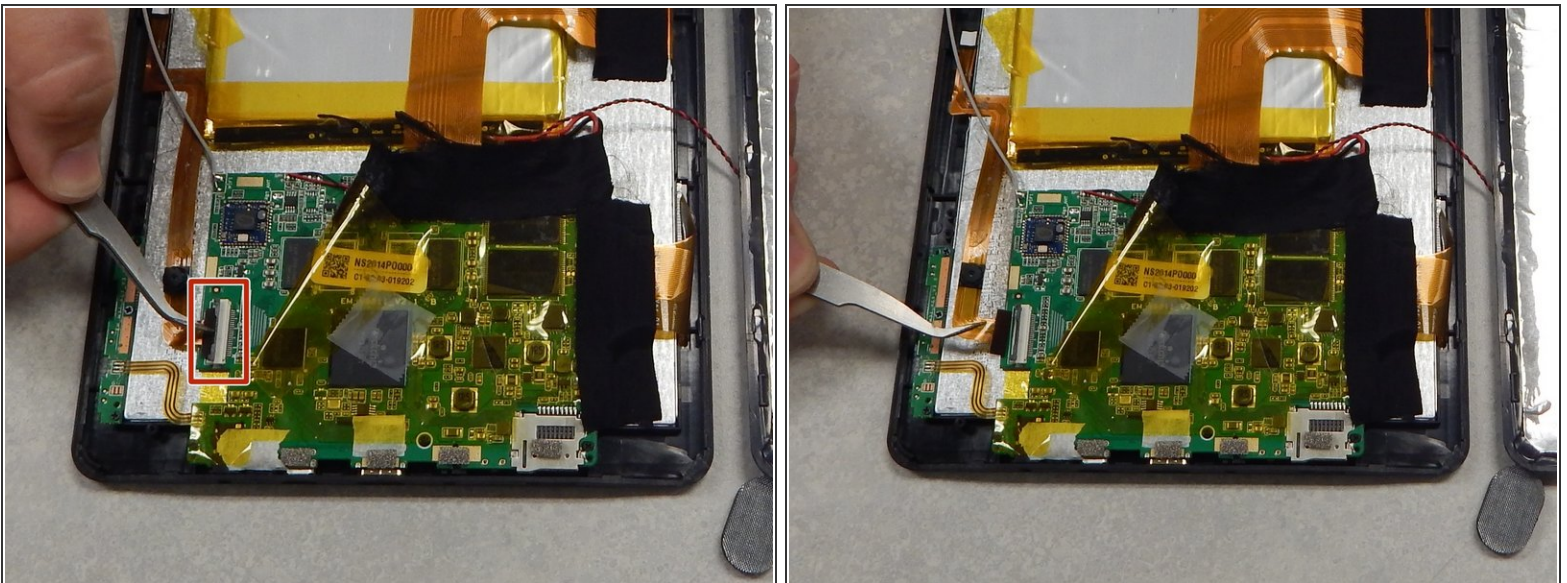
- Use the separating tool to pry the speaker from its surface.
  - ⚠ Use caution when removing the speaker, you may damage the screen.
- Cut or desolder the wires to replace or repair the speaker.

## Step 4 — Camera



- Using a P00 Phillips screwdriver, remove the three screws securing the black plastic camera housing and remove it.
- Peel back the beige tape while holding down the camera ribbon cable to prevent tears

## Step 5



- Lift the locking tab that is securing the camera ribbon cable.
- Slide the ribbon cable out from the connector and remove from casing.



## Step 6 — Power/Volume Buttons



- Use a P00 Phillips screwdriver to remove the three screws securing the button board.
- Desolder the contacts on the button board to remove or replace it.

To reassemble your device, follow these instructions in reverse order.