



# Sony BDP-BX520 Bluetooth Module Replacement

This guide will show you how to remove the Bluetooth module.

Written By: Gregory Pellegrino





## TOOLS:

- [Phillips #2 Screwdriver](#) (1)
  - [Metal Spudger Set](#) (1)
-

## Step 1 — Disc Tray Cover



- Plug in the Blu-Ray player, then press the power button, making sure the Blu-Ray player is powered on.
- Press the eject button on either the top of the Blu-Ray player or on the remote to open the disc tray.

## Step 2



- Grab the sides of the disc tray cover and carefully pull each side upwards, starting with the left side. This will unhook the cover from the tray.

## Step 3



- Close the disc tray, then power off and unplug the Blu-Ray player.

## Step 4 — Top Case



- Locate the three 8 mm screws on the back of the Blu-Ray player.
- Using the Phillips #2 screwdriver, unscrew each of the screws and set them aside.

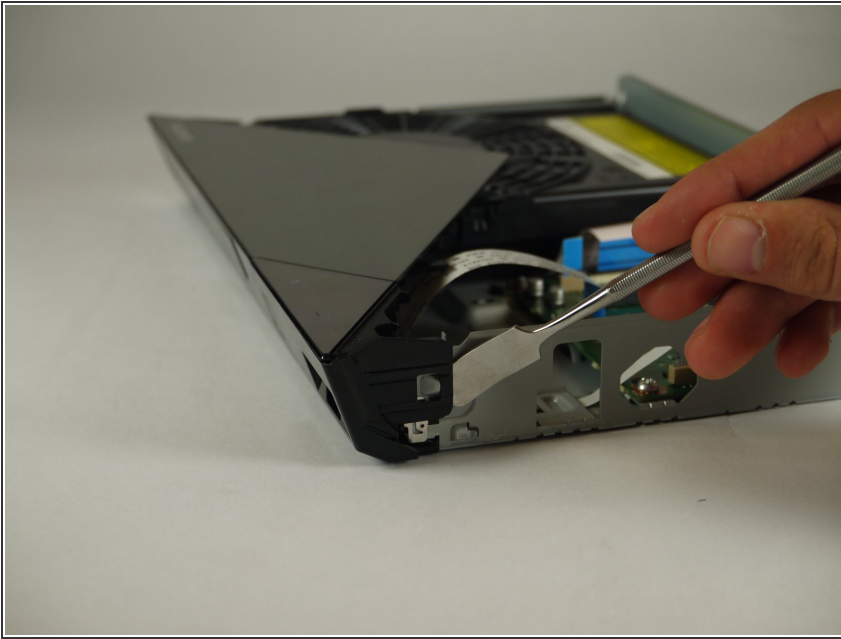
## Step 5



- Gently pull the top case back to remove it from the Blu-Ray player.

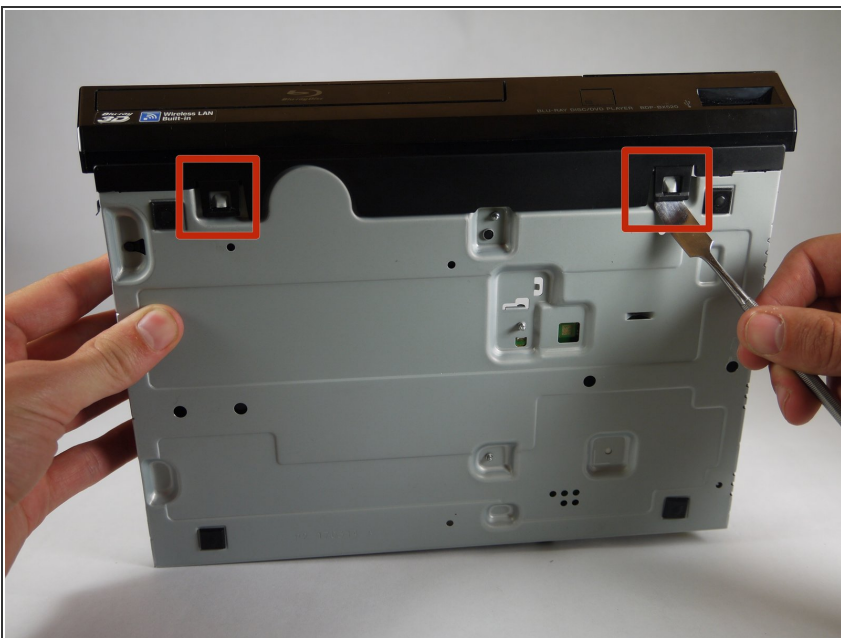


## Step 6 — Front Panel



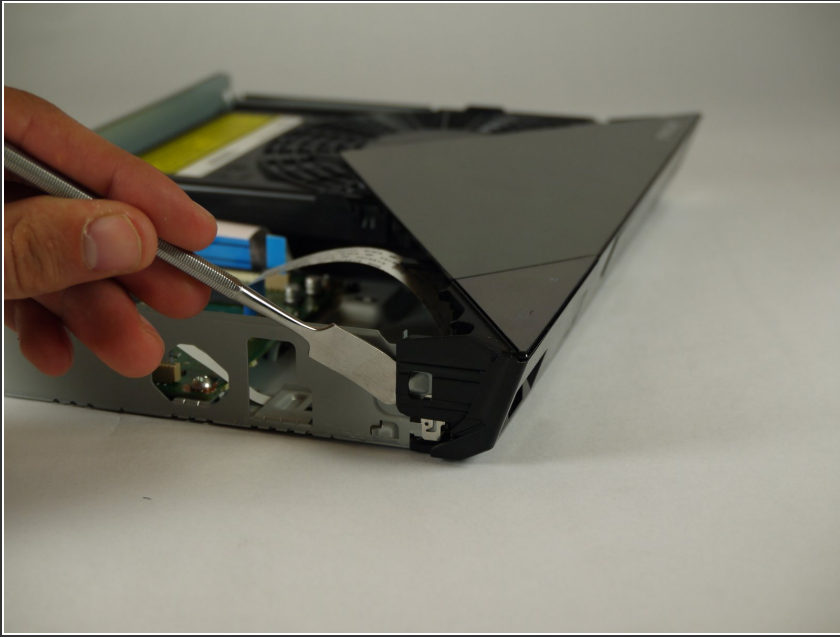
- Insert the nylon or metal spudger under the clip on the side near the front of the device. Lift the clip so it is free from the device.
- ⓘ Lifting these clips may require you to hold one clip open while you move on to the next clip.

## Step 7



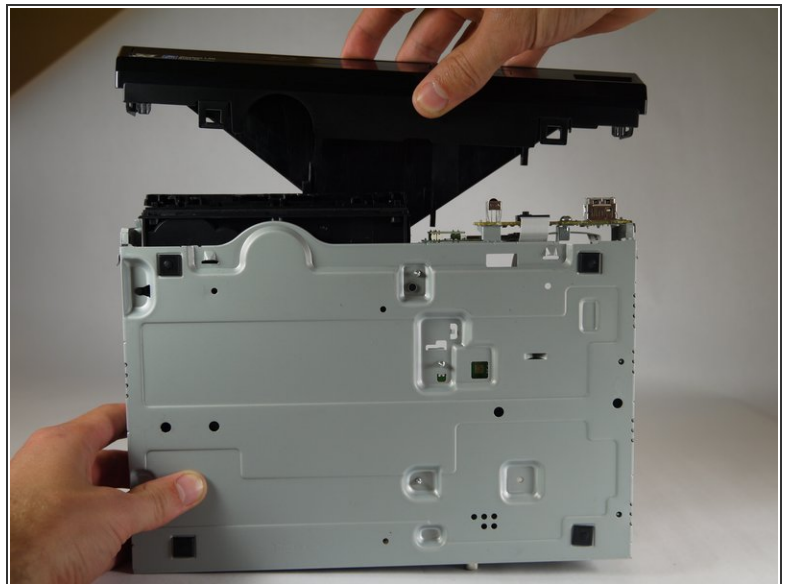
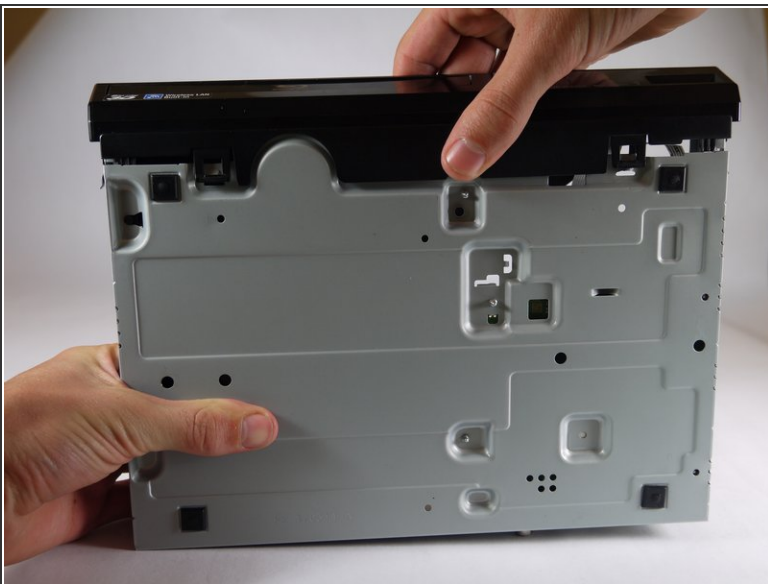
- Flip device over so the bottom faces you.
- Insert the nylon or metal spudger and lift the two clips on the bottom of the device.

## Step 8



- Lift the clip on the opposite side of the device with the nylon or metal spudger.

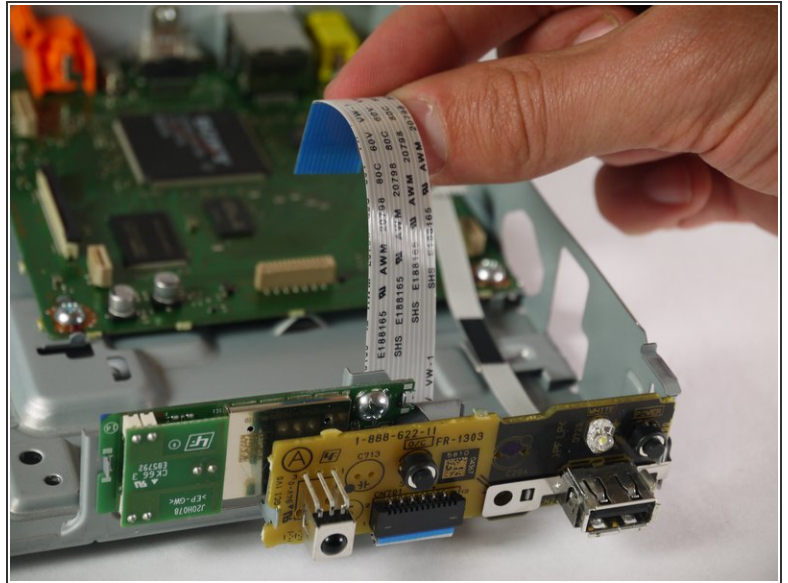
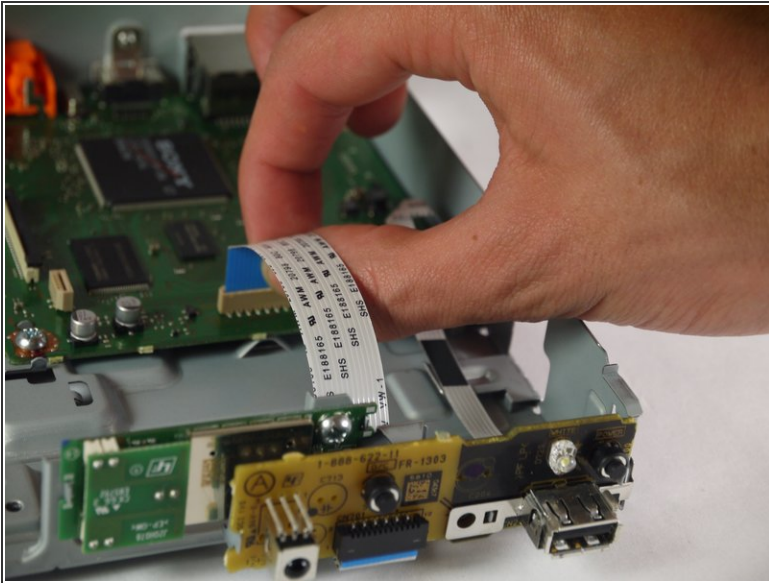
## Step 9




- Grasp the front case firmly and lift from the rest of the device.

 Lifting may require some force.

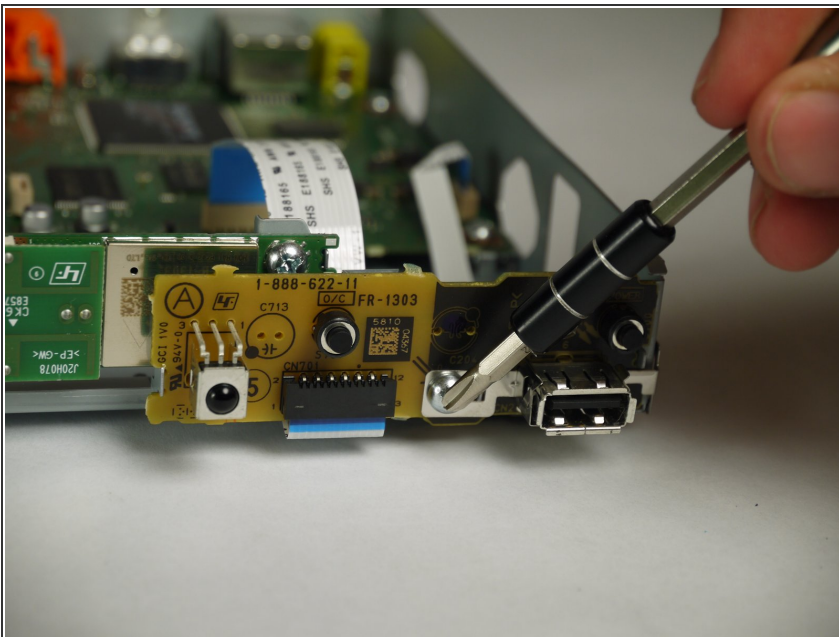
## Step 10 — Port Board



 When handling circuit boards like the motherboard and port board, make sure to only touch them on the sides.

- Locate the large ribbon cable connecting the port board to the motherboard.
- Detach the cable from the motherboard by carefully pulling upward on the cable.

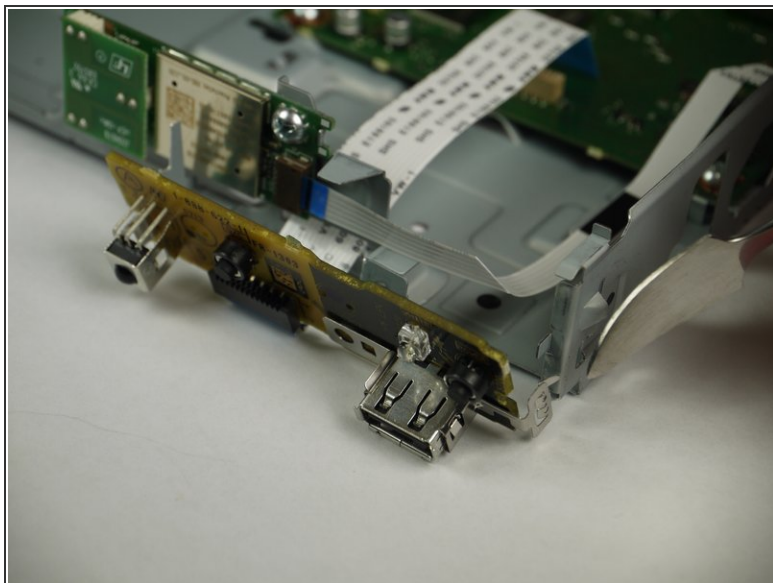
## Step 11



- Using the Phillips #2 screwdriver, unscrew the silver, 8mm screw holding the board in place.

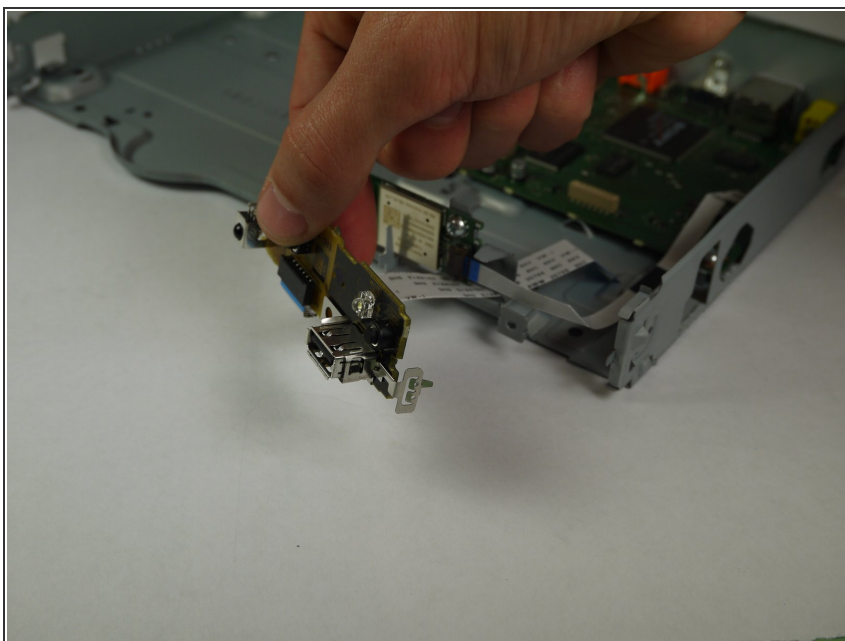


## Step 12



- Using the nylon or metal spudger, carefully unclip the port board from the side of the player.

## Step 13



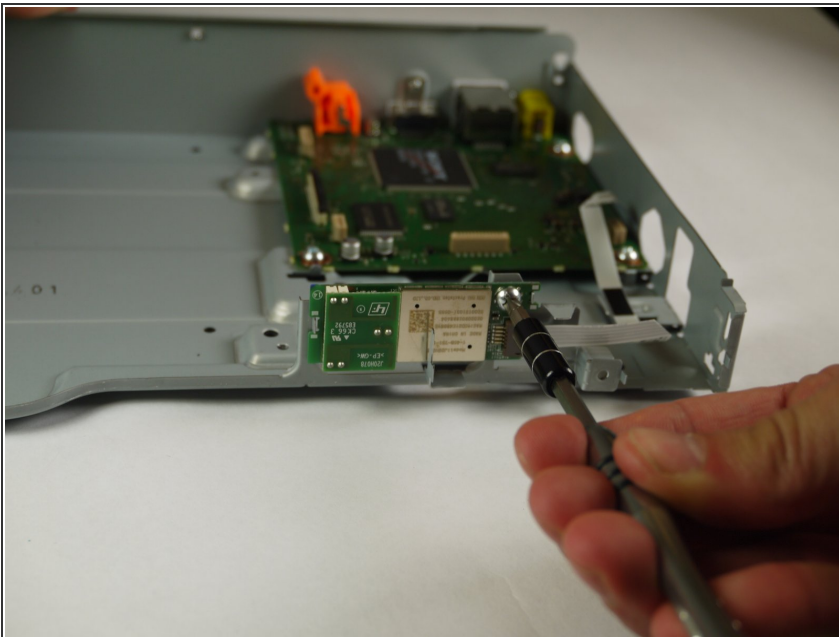
- Carefully pull the port board free from the Blu-Ray player.

## Step 14 — Bluetooth Module



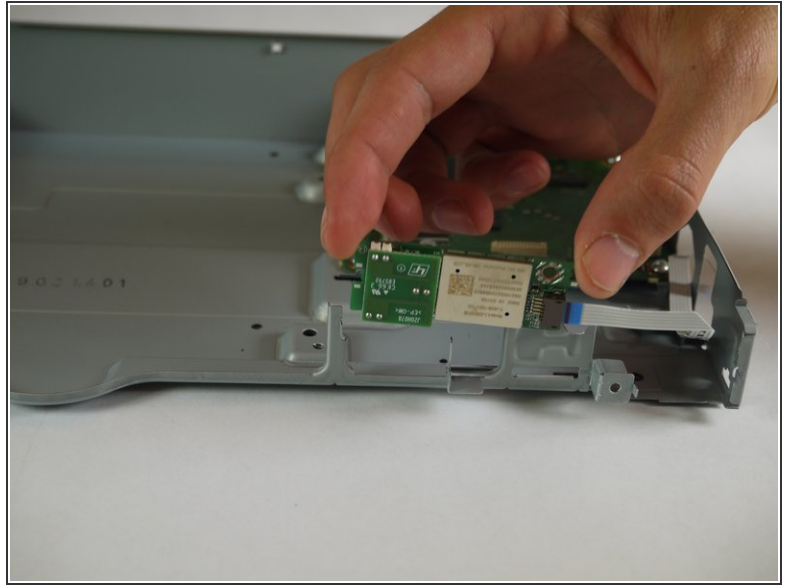
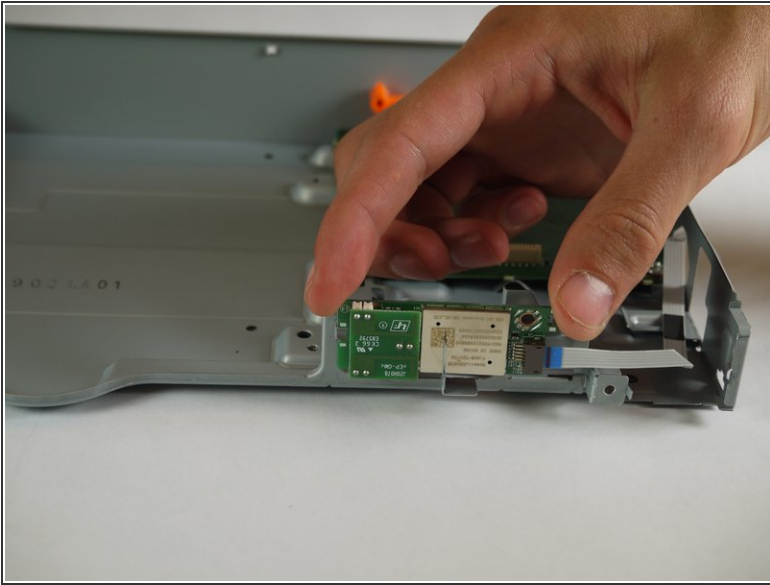
- Pull the small 5 pin ribbon cable out of its connector on the motherboard.

## Step 15



- Using a Phillips #2 screwdriver, remove the silver 8 mm screw attaching the Bluetooth module to the front of the case.

## Step 16



- Remove the Bluetooth module from the case.

⚠ Make sure to only touch the sides of the Bluetooth module when removing it from the case.

To reassemble your device, follow these instructions in reverse order.