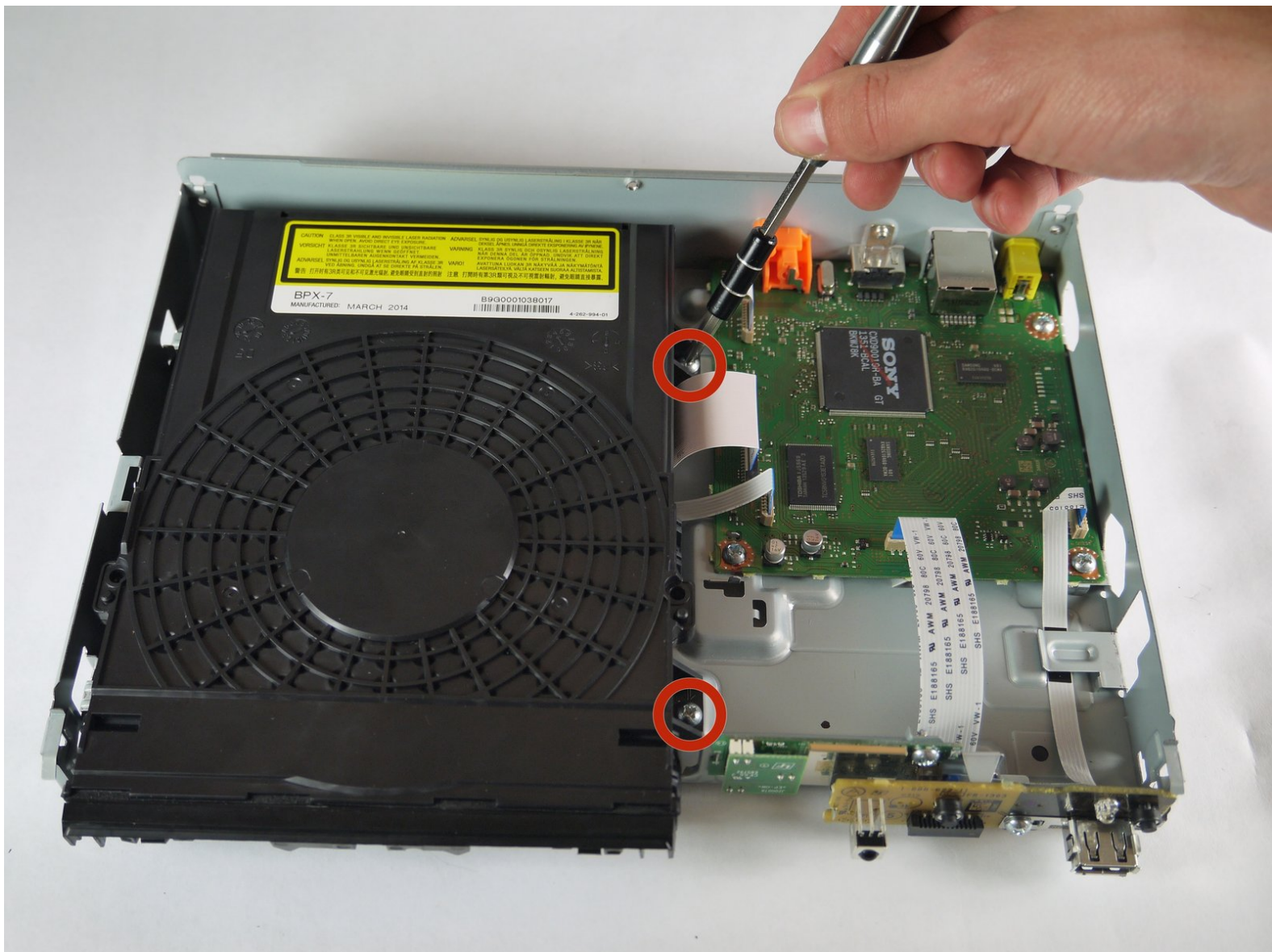




Sony BDP-BX520 Disc Tray Replacement

This guide will tell you how to remove the disc tray.

Written By: Gregory Pellegrino





TOOLS:

- [Phillips #2 Screwdriver](#) (1)
 - [Metal Spudger Set](#) (1)
 - [Tweezers](#) (1)
 - [Spudger](#) (1)
-

Step 1 — Disc Tray Cover



- Plug in the Blu-Ray player, then press the power button, making sure the Blu-Ray player is powered on.
- Press the eject button on either the top of the Blu-Ray player or on the remote to open the disc tray.

Step 2



- Grab the sides of the disc tray cover and carefully pull each side upwards, starting with the left side. This will unhook the cover from the tray.

Step 3



- Close the disc tray, then power off and unplug the Blu-Ray player.

Step 4 — Top Case



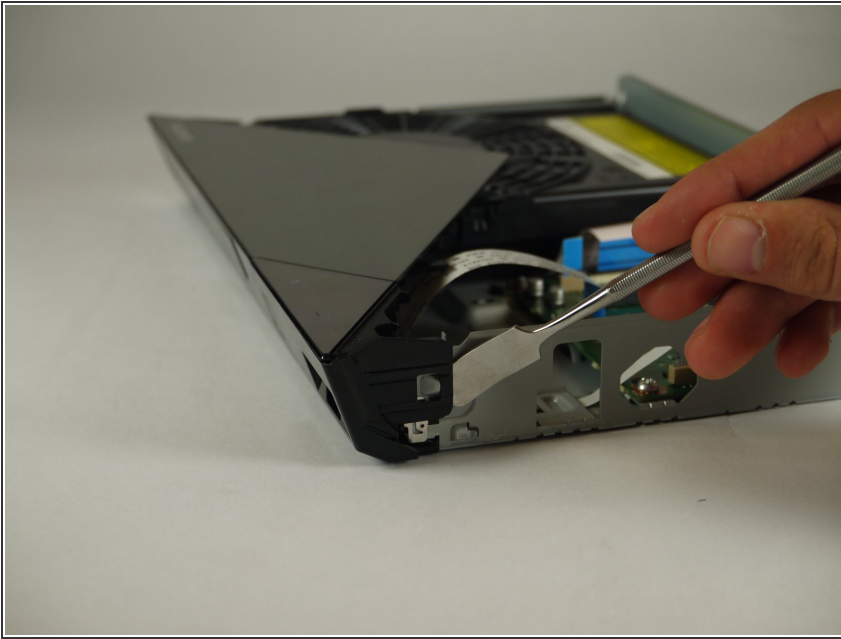
- Locate the three 8 mm screws on the back of the Blu-Ray player.
- Using the Phillips #2 screwdriver, unscrew each of the screws and set them aside.

Step 5



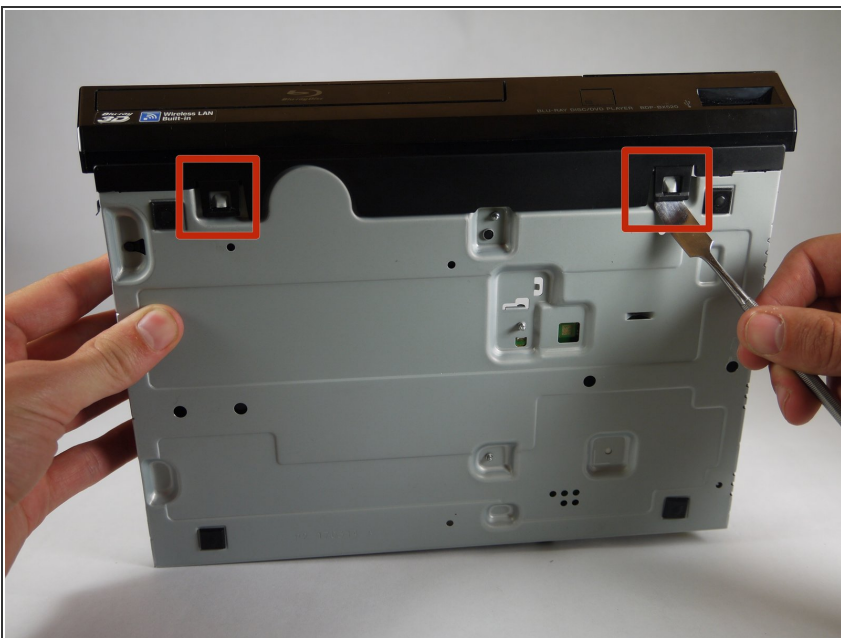
- Gently pull the top case back to remove it from the Blu-Ray player.

Step 6 — Front Panel



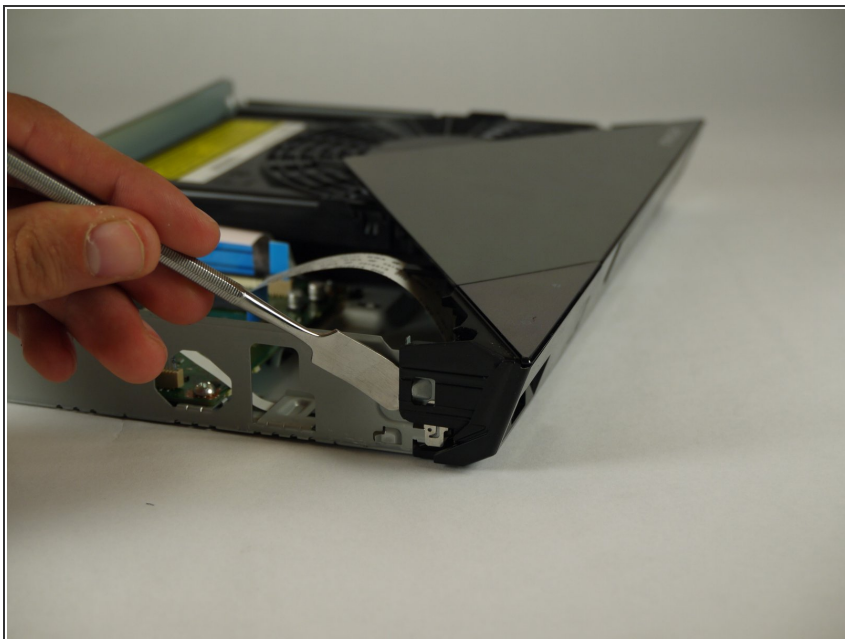
- Insert the nylon or metal spudger under the clip on the side near the front of the device. Lift the clip so it is free from the device.
- ⓘ Lifting these clips may require you to hold one clip open while you move on to the next clip.

Step 7



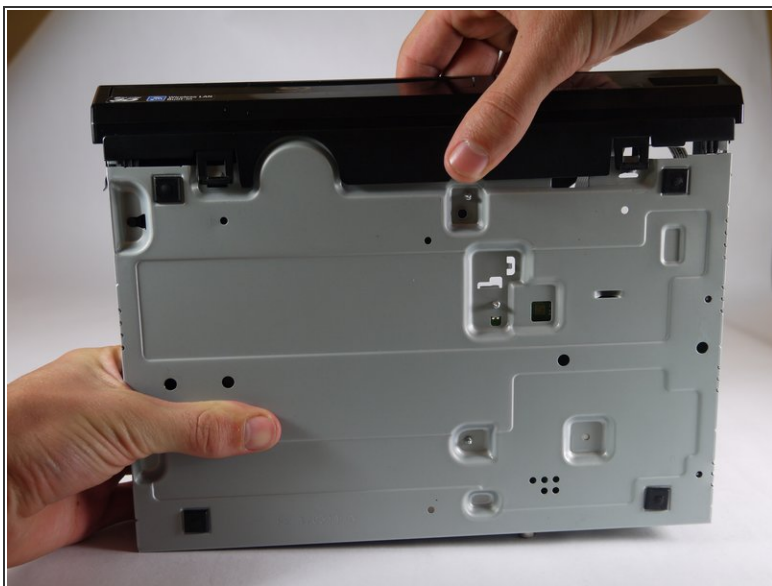
- Flip device over so the bottom faces you.
- Insert the nylon or metal spudger and lift the two clips on the bottom of the device.

Step 8



- Lift the clip on the opposite side of the device with the nylon or metal spudger.

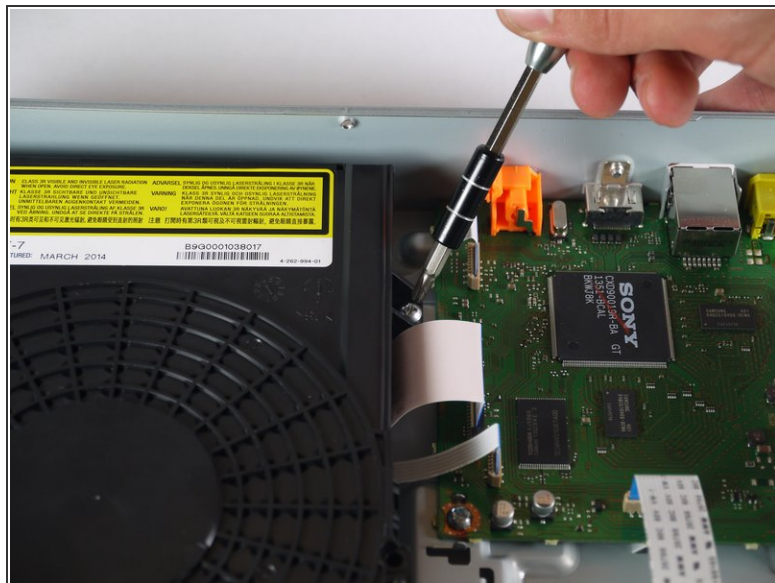
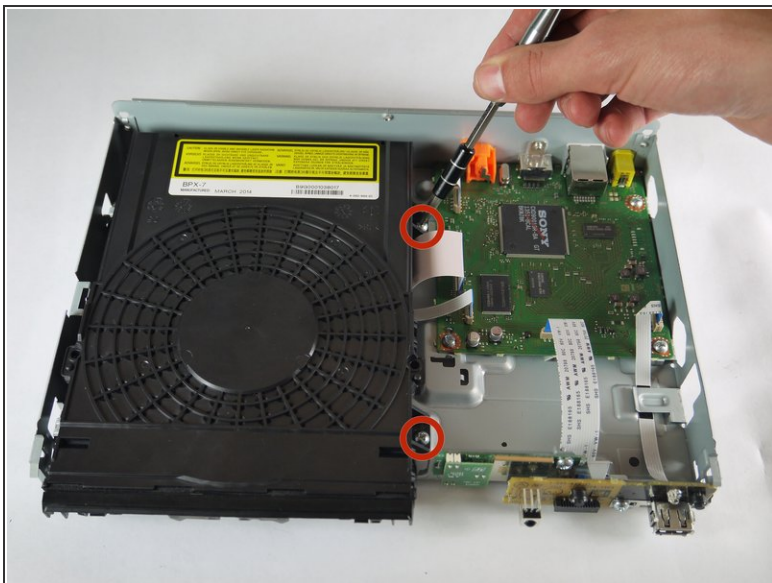
Step 9



- Grasp the front case firmly and lift from the rest of the device.

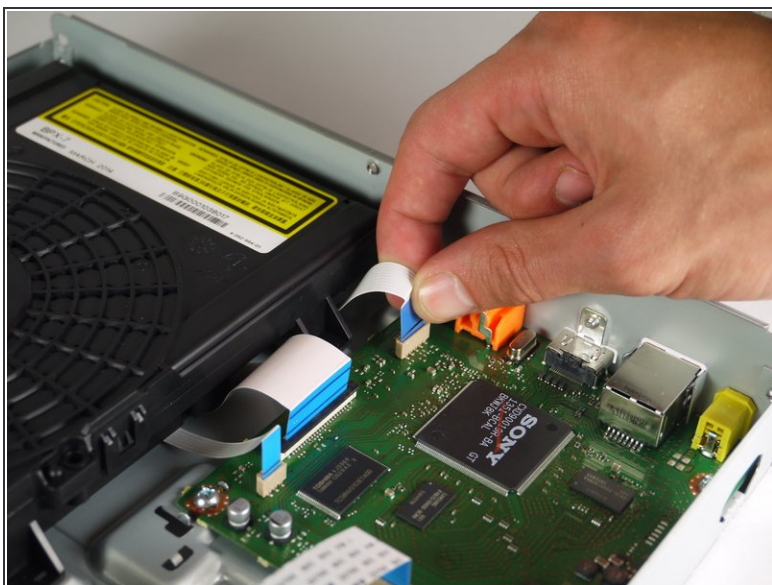
- ⓘ Lifting may require some force.

Step 10 — Disc Tray



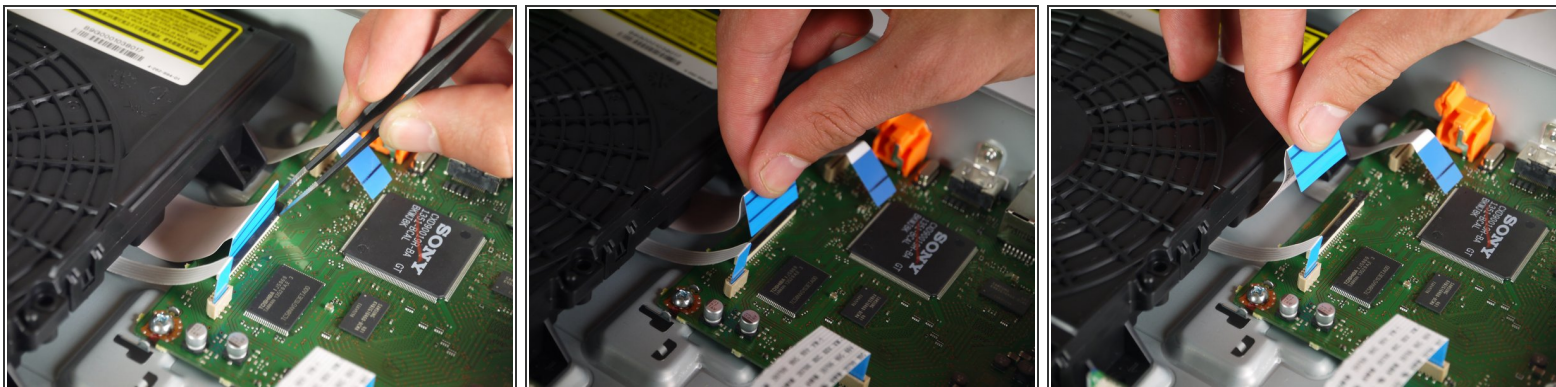
- Using a Phillips #2 screwdriver, remove the two silver 8 mm screws on the right side of the disc tray .

Step 11



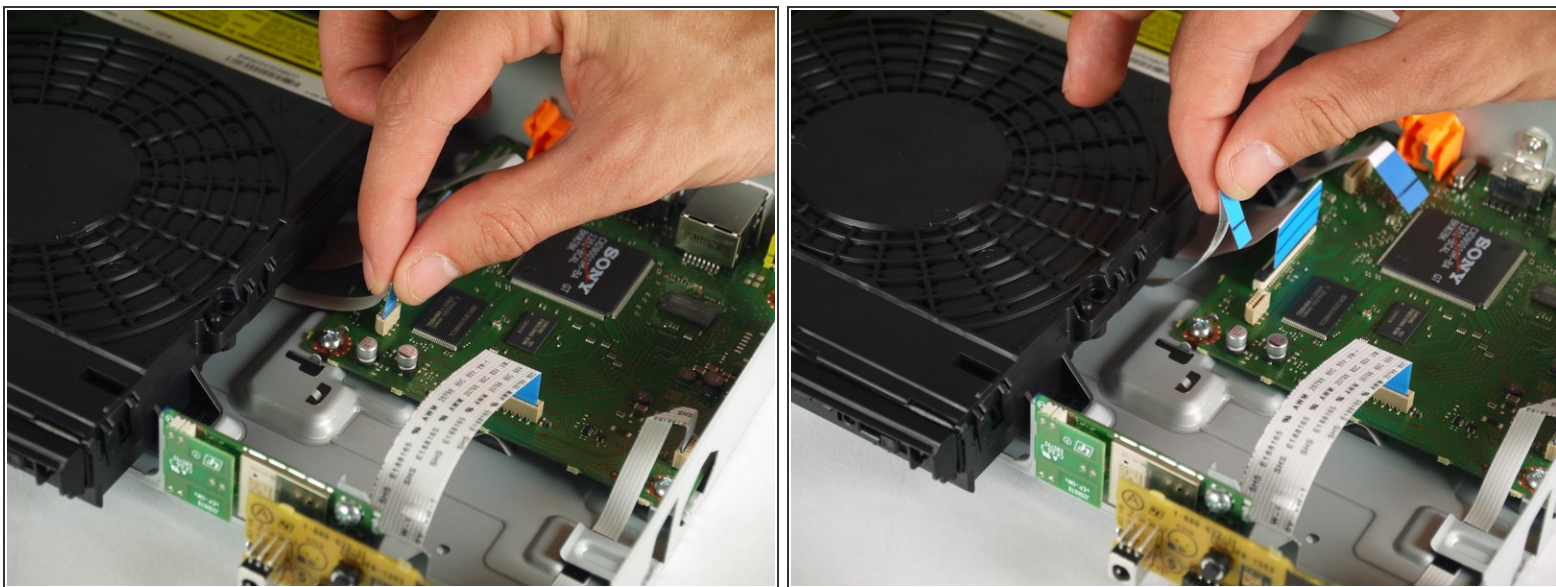
- Pull the medium-sized 9 pin ribbon cable out of its connector on the motherboard.

Step 12



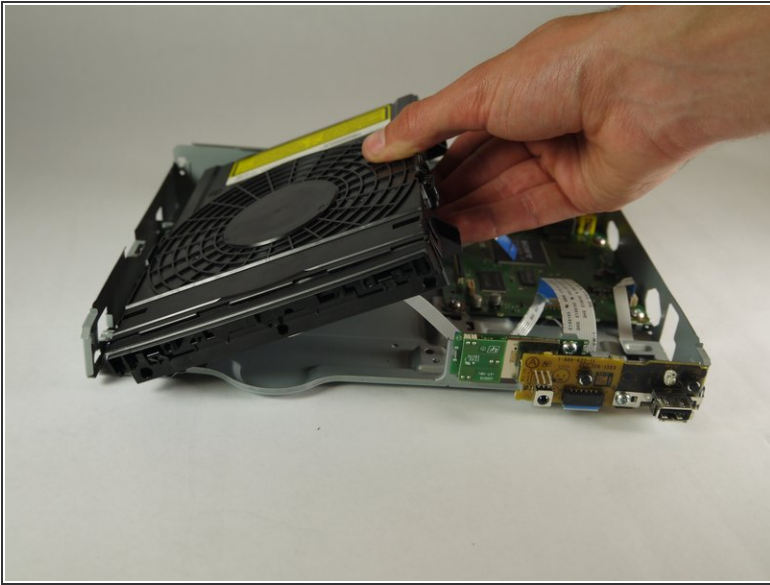
- Using tweezers, lift up the tab of the large 45 pin connector on the motherboard.
- Pull the large 45 pin ribbon cable out of its connector.

Step 13



- Pull the small 5 pin ribbon cable out of its connector on the motherboard.

Step 14



- Slide the disk tray out from under the tabs on the case holding it down while lifting it out of the case.

To reassemble your device, follow these instructions in reverse order.