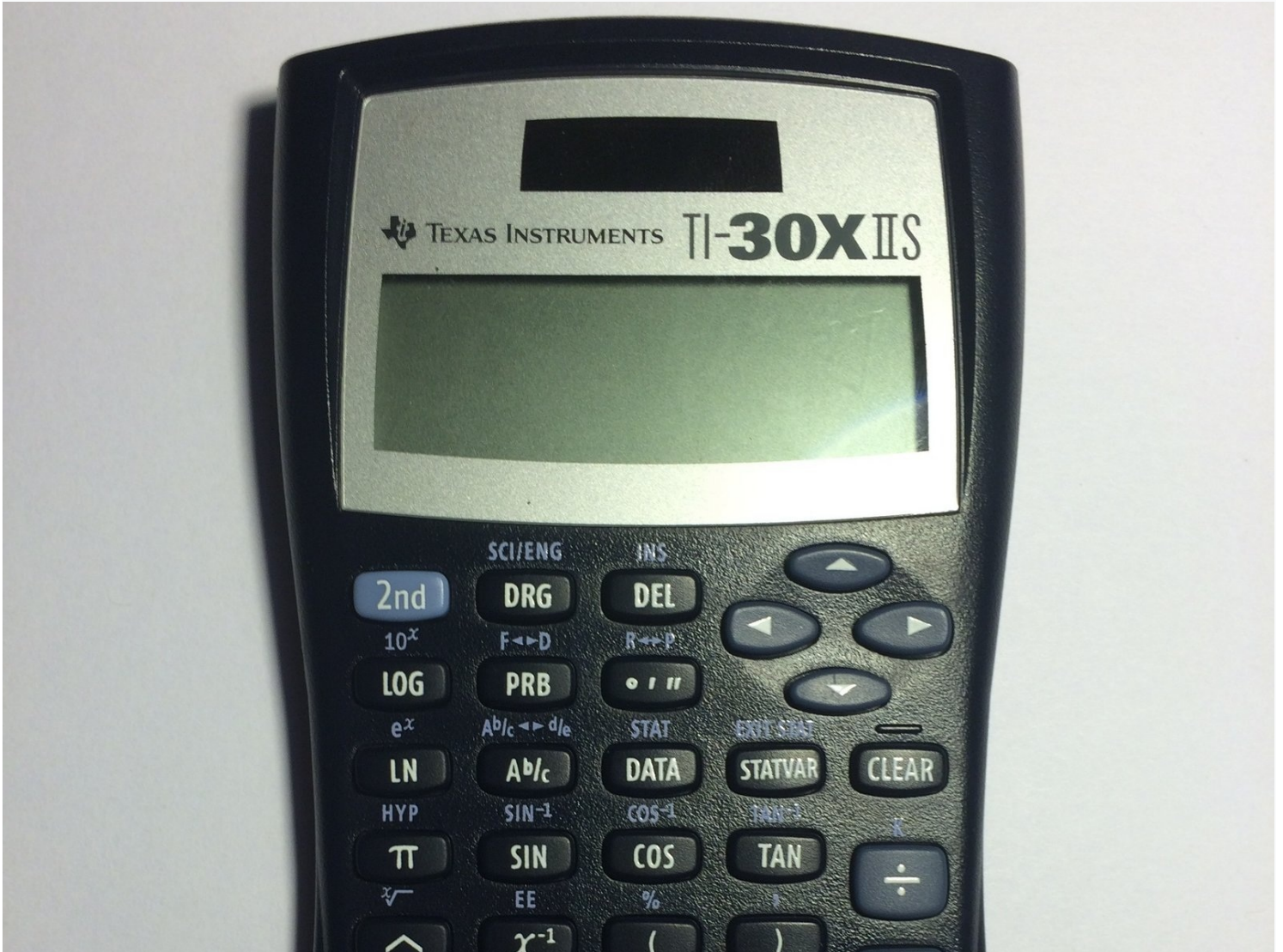




# Texas Instruments TI-30X IIS Battery Replacement

This guide goes step-by-step on how to safely...

Written By: Ryan



# INTRODUCTION

This guide goes step-by-step on how to safely replace the battery on your TI-30X IIS scientific calculator.

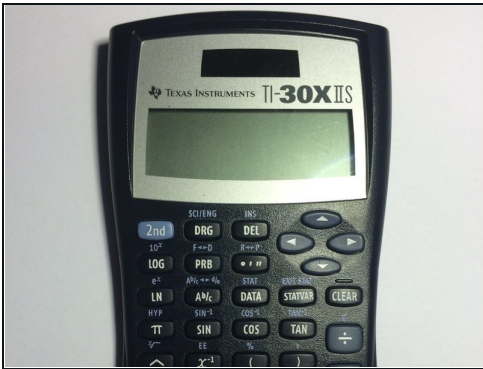
## TOOLS:

Phillips #2 Screwdriver (1)  
6-in-1 Screwdriver (1)  
CR2025 3V Lithium Battery (1)

## PARTS:

CR2025 Battery (1)

## Step 1 — Device Inspection



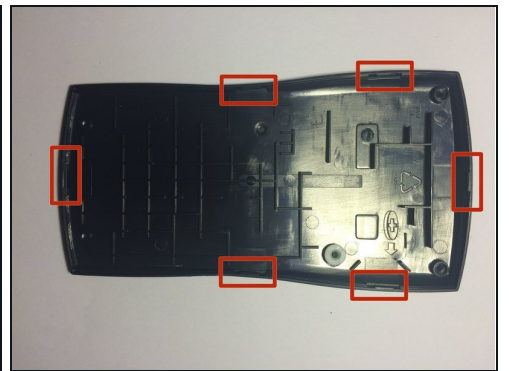
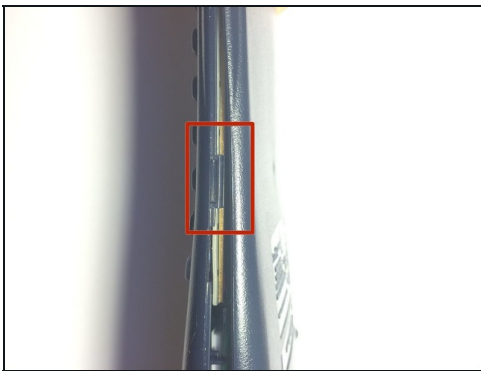
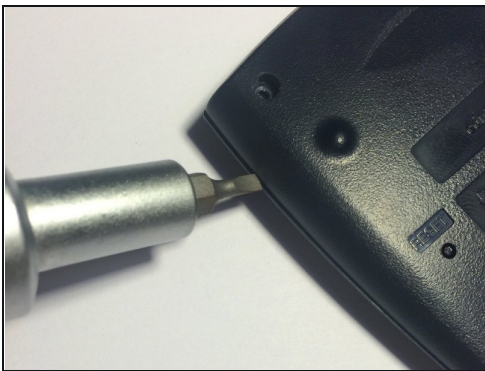
- Ensure that your calculator is a TI-30X IIS by looking in the top right corner of the front face.
- Look at the rear face of the calculator and locate the four case screws. There are two at the top and two at the bottom.

## Step 2 — Removing Screws



- Use a Philips 00 screwdriver to remove the four case screws on the rear face of the calculator.
- ⓘ Be sure to save the screws in a secure place as they are small and easy to lose. They will be needed later for reassembly.

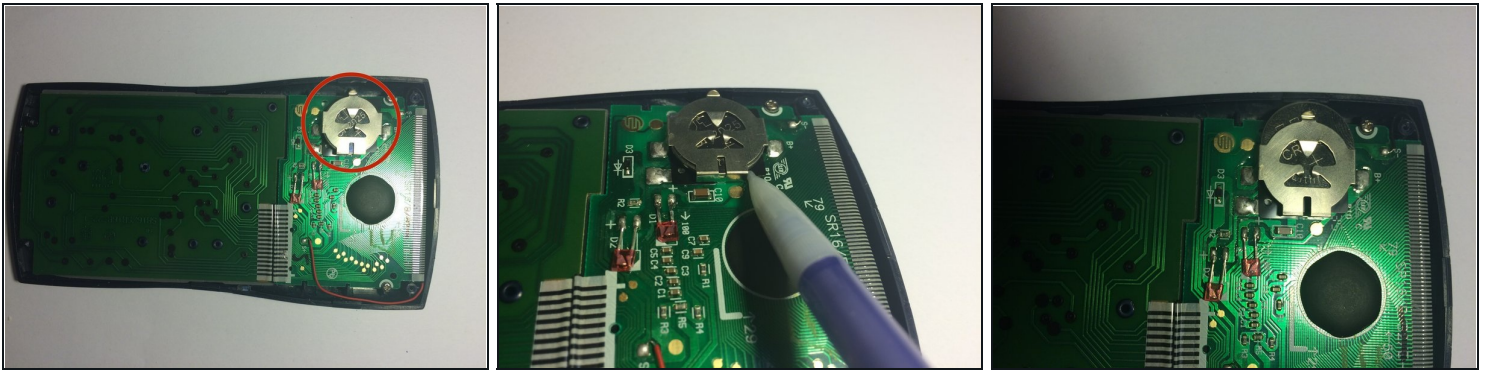
## Step 3 — Unclipping Case



- With all four screws removed, use a flathead screwdriver or similar flat object to separate the front and rear casings.
- There are six clips that keep the cases together. These areas will require extra force to separate, but use caution to not fracture the plastic pieces.



## Step 4 — Removing Battery



- With the rear case off, the battery is exposed and accessible.
- Using a pointed tool, slide the battery out of its terminal towards the rear edge.
- Once the battery is protruding from the contacts, remove it with your fingers.

## Step 5 — Replacing Battery



- Properly dispose of the old battery.
- Replace the battery with an identical one, positive terminal up and negative terminal facing down towards the circuit board.
- Following the previous steps in the reverse order to reassemble the calculator.

To reassemble your device, follow these instructions in reverse order.